



Nigel Ward & Co. Auctioneers

The New Salerooms, Pontrilas, Hereford. HR2 0EH Tel. 01981 240140 ~ Fax. 01981 240340.

Email. salerooms@nigel-ward.co.uk

C A T A L O G U E

of the

Special August Two-Day Sale of

**ANTIQUE AND COUNTRY
FURNITURE, EFFECTS, PORCELAIN,
PAINTINGS, OBJETS D'ART
AND COLLECTABLES**

For Sale by Auction

on

**FRIDAY 8th AUGUST and
SATURDAY 9th AUGUST, 2025**

**Viewing is on Thursday 7th August
from 9am - 1pm and from 2pm - 7pm.
(Light refreshments available)**

Please note: Two auctioneers will be in operation for much of the Saturday sale.

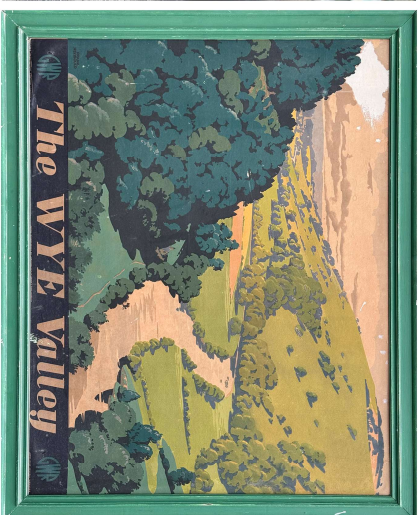
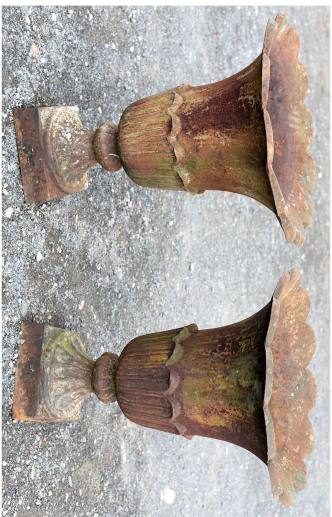
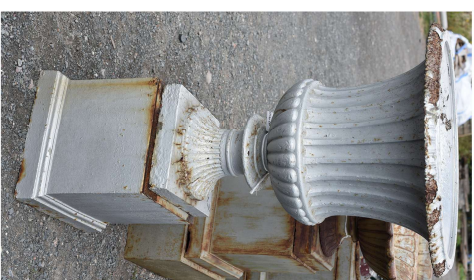
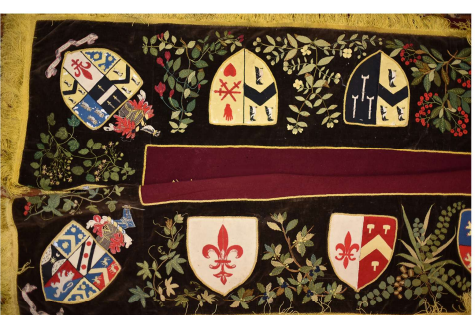
Buyer's Premium = 20% Plus VAT (24% Incl. VAT)
Vehicles 10% Plus VAT (12% incl. VAT)

Online Bidders will pay an additional fee.

Terms: Most Major Debit or Credit Cards/Cash/Bankers Draft/Electronic Bank Transfer.

BID LIVE ONLINE: www.nigel-ward.co.uk/live

Catalogue **£2** or download from:
www.nigel-ward.co.uk



Nigel Ward & Co. Catalogue 8th – 9th August 2025

03 **Friday 8th August 9am**
BRIC-A-BRAC (OUTSIDE LOTS)

1	A concrete figure of Chinese Fo Dog [a/f], 21" tall x 20" long.	19	A set of five graduated terracotta Pots (new). ***VAT at the rate of 20% will be added at the hammer price of this lot.
2	A large blue glazed planter, 20 1/2" diameter x 17" high plus two others and a galvanised bucket.	20	A set of five graduated terracotta pots (new). ***VAT at the rate of 20% will be added to the hammer price of this lot.
3	An Oak Whisky barrel, 22" diameter x 35" high. ***VAT at the rate of 20% will be added to the hammer price of this lot.	21	A "Callistemon Comboynensis" and Holly tree. ***VAT at the rate of 20% will be added to the hammer price of this lot.
4	A Whisky barrel, 21" diameter x 35" high. ***VAT at the rate of 20% will be added to the hammer price of this lot.	22	A set of five graduated terracotta pots (new). ***VAT at the rate of 20% will be added to the hammer price of this lot.
5	An Oak half barrel planter, 26" diameter x 18" high and a bag of compost. ***VAT at the rate of 20% will be added to the hammer price of this lot.	23	An Olive tree. ***VAT at the rate of 20% will be added to the hammer price of this lot.
6	An Oak Whisky barrel, 24 1/2" diameter x 33 1/2" high ***VAT at the rate of 20% will be added to the hammer price of this lot.	24	A "Ligustrum Delavayanum" tree. ***VAT at the rate of 20% will be added to the hammer price of this lot.
7	A half barrel planter, 26" diameter x 16" high and two bags of compost. ***VAT at the rate of 20% will be added to the hammer price of this lot.	25	An "Ilex Crenata" and a Bay tree. ***VAT at the rate of 20% will be added to the hammer price of this lot.
8	A Fan palm tree. ***VAT at the rate of 20% will be added to the hammer price of this lot.	26	A Bamboo plant. ***VAT at the rate of 20% will be added to the hammer price of this lot.
9	A half barrel planter, 28" diameter x 17" high and two bags of compost. ***VAT at the rate of 20% will be added to the hammer price of this lot.	27	A Lemon tree and an Orange tree. ***VAT at the rate of 20% will be added to the hammer price of this lot.
10	An "Acer Garnet" tree. ***VAT at the rate of the 20% will be added to the hammer price of this lot.	28	A set of five graduated terracotta pots (new). **VAT at the rate of 20% will be added to the hammer price of this lot.
11	An Olive tree. ***VAT at the rate of 20% will be added to the hammer price of this lot.	29	A set of four square pots, 9" square x 9" high. ***VAT at the rate of 20% will be added to the hammer price of this lot.
12	A fan palm tree. ***VAT at the rate of 20% will be added to the hammer price of this lot.	30	Three "African Breeze" plants. ***VAT at the rate of 20% will be added to the hammer price of this lot.
13	A Palm tree. ***VAT at the rate of 20% will be added to the hammer price of this lot.	31	A concrete Lion, 26" long x 15" high.
14	A cast iron Fire Back having Coat of Arms crown and fleur-de-lys decoration, 24" wide x 25" high.	32	A stone trough, 26" x 17" x 11" high. ****
15	A cast iron Fire Back having scroll decoration, 19 1/2" x 22".	33	A pair of plastic planters, 13" square x 19 1/2" high. ***VAT at the rate of 20% will be added to the hammer price of this lot.
16	A "Photinia Fraseri Red Robin" tree. ***VAT at the rate of 20% will be added to the hammer price of this lot.	34	Two "Acer" trees. ***VAT at the rate of the 20% will be added to the hammer price of this lot.
17	A "Photinia Red Robin" tree. ***VAT at the rate of 20% will be added to the hammer price of this lot.	35	A large glazed planter, 21" x 17" x 14".
18	Two Olive trees. ***VAT at the rate of 20% will be added to the hammer price of this lot.	36	Two galvanised garden incinerators [new]. ***VAT at the rate of 20% will be added to the hammer price of this lot.
		37	A Palm tree. ***VAT at the rate of 20% will be added to the hammer price of this lot.
		38	A Lime tree. ***VAT at the rate of 20% will be added to the hammer price of this lot.
		39	Two "Liquidambar" trees. ***VAT at the rate of 20% will be added to the hammer price.

40	A pair of cast iron tulip Planters, 23 1/2" diameter x 28" high.	67	Wooden folding steps/loft ladder, etc.
41	A large cast iron Urn planter on a plinth by Andrew Handyside, finished in silver paintwork, 26" diameter x 46" high overall.	68	A red metal workshop shelving, 59" x 28" x 12".
42	A pair of cast iron Coalbrookdale planters on plinths, stamped, 23 1/2" diameter x 38" high overall.	69	Four wooden framed window casements, 53 1/2" x 22 1/4".
43	A wrought iron Garden Bench by Andrew McLaren, painted black, 6 ft long x 24" deep x 31" high.	70	A camping chair, besom mop and bucket etc.
44	A decorative Coalbrookdale cast iron umbrella stand, 19" x 28" high x 7" deep.	71	A safety platform.
45	A circular table top by Coalbrookdale, 29" diameter.	72	A "Raleigh" bicycle.
45 A	Two cast iron garden chairs, Coalbrookdale style.	73	An aluminium step ladder and a saw horse.
46	A pair of Coalbrookdale cast iron red painted bench ends and frame in Nasturtium bench [a/f].	74	Two galvanised mesh fence panels, approx 135" x 78" high.
47	A pair of cast iron bench ends, Andrew McLaren finished in white. [stamped]	75	A "Falcon" Mountain bike.
48	A Victorian teak garden bench with cast iron ends stamped with the diamond shaped registered design mark, in Griffin pattern no. 161309, first registered by William Corbin 09/04/1863, 62" long x 27" x 29".	76	A "Python" Mountain bike.
49	A very substantial and appealing two-seater cast iron Lion Foundry, Northampton Garden Bench having floral detail, finished in white, 40" x 23" x 37".	77	Two fibreglass bath tubs; one with taps 66 1/2" x 32", the other 66" x 28".
50	A double extending aluminium ladder.	78	Eleven stacking crates.
51	A "Lansford" aluminium step ladder.	79	Ride-on lawn mower Wheels and tyres.
52	Two ladders.	80	A Dog crate and boot guard. 37" x 25".
53	A 'Woden' 4" bench vice plus another.	81	Two wicker log baskets, logs, etc.
54	A painted concrete Fox ornament, 13" tall x 12" long. **	81 A	Five cream painted 13" diameter Austin A50 Cambridge steel, four-stud, wheel rims.
55	A concrete boot planter, 16" long x 8" high.	82	Two coal hods, a quantity of loppers, hand saw, etc.
56	A cast iron shoe last and a Blacksmith's forging/shaping tool, believed for mounting on an anvil.	83	A swivel bar stool.
57	A concrete otter ornament, 16" tall.	84	A Parasol and base.
58	A concrete ornament in the form of a Man seated on a bench, 16" long x 18" high.	85	A plastic bucket of scaffold clamps.
59	An old WWII Gas mask, believed to be for a baby, and a drinks/water container/flask.	86	A galvanised wheelbarrow on a pneumatic tyre.
60	A quantity of blue racking and plywood shelving.	87	A "Hayterette" lawn mower with a Briggs and Stratton engine [engine turns].
61	A pair of plastic "Stanley" trestles.	88	A pair of window Shutters/cupboard doors with security bar and a wall-mounting pricket stand.
62	A Vintage six-prong root fork.	89	A quantity of garden tools, spades, forks, loppers, felling axe etc.
63	A pick axe and a shovel.	90	Two cantilever tool boxes [empty].
64	A quantity of bamboo canes, 5' and 6', approx. 30.	91	A "Vernon Tetbury" pedestal basin.
65	A shovel and two spades.	92	Fuel can and a "Listaflex" car wash brush.
66	A pine step ladder.	93	A box of nuts and bolts and washers, [new].
		94	Three wrought iron Saddle racks.
		95	A quantity of retro advertising milk bottles.
		96	A 56 lb Avery weight and a shed tidy.
		97	A tractor battery, (believed unserviceable),
		98	Four bicycle tyres [no inner tubes].
		99	A box of plant pots, in various colours and sizes.
		100	A box of nuts, bolts and washers [new].
		101	Two "Pratts" two gallon fuel cans with brass lids.
		102	Six lengths of pine (tanalised), various sizes.
		103	A small quantity of garden shears / loppers.
		104	Garden tools, plastic hanging pots etc.
		105	A quantity of builders bags.
		106	A quantity of miscellaneous steel brackets and pins, etc

107	A "Bulldog" ten-prong root fork.	138	Two pairs of Steelite safety boots, size 9.
108	Three tubs of "Sika" release oil and three moulds for making concrete balls.	139	Two boxes of miscellaneous, sockets, bottle jack, mitre blocks, castors, etc.,
109	Two boxes of garden miscellaneous, pots, baskets, etc.	140	Double Radiator, 2'6" and heated towel rail.
110	A wrought iron pot hanger, 27 1/2" x 15" x 13".	141	A pine Kitchen table [a/f], 48" x 26" x 30" high.
111	Three green 42 Litre "Ecotubs". ***VAT at the rate of 20% will be added to the hammer price of this lot.	142	"Gallant" free-standing punch bag.
112	Hozelock grow-bag self-watering system. ***VAT at the rate of 20% will be added to the hammer price of this lot.	143	A Mobility aid and chair/stool.
113	Three black 42 Litre "Flexi Tubs" ***VAT at the rate of 20% will be added to the hammer price of this lot.	144	Five office chairs.
114	Green parasol with cast iron base.	145	A stained pine coffee table, 44 1/2" x 20 1/4" x 14 1/2" high.
115	Toilet and cistern.	146	Patio cleaner, blue glazed pot, etc.
116	Wrought iron tree seat, approx 51" diameter x 33" [trunk size 20" diameter].	147	"Oleo-mac" petrol lawn mower [engine turns and has good compression].
117	Two drawer metal filing cabinet, 24" x 18 1/2" x 27 1/2".	148	A quantity of small pots, etc.
118	A Qualcast Suffolk Punch 43 S cylinder mower with grass box, [engine turns and has compression].	149	Three pairs of cast iron bench ends, 20" x 12".
119	A trestle/butter churn base, 30" x 18" x 27 1/2" high.	150	"Clarke" 12 litres trolley hand sprayer plus another.
120	A quantity of galvanised items, a metal milking stool, a mop bucket, two watering cans, a coal hod, etc.,	151	A large concrete clam-shell planter, hanging baskets, pots, chimney pot with vented lid, etc.,
121	A metal table.	152	Three garden trugs and a wicker basket.
122	A cantilever parasol with weighted base.	153	Two hurricane lamps.
123	A compost bin.	154	A quantity of half full paint tins, Weathershield, Poly-filla, a desk lamp, etc.,
124	A quantity of clothes rails for assembly.	155	A quantity of bird peanuts, fat balls, cat, dog and squirrel repellents.
125	A large quantity of plastic plant pots.	156	A quantity of gardening items, tools, pots, sprayer etc.
126	Three folding deck chairs.	157	Two sack trucks.
127	A quantity of mainly chromium plated metal pipes/bars with threaded joiners, possibly shelving legs/supports. Each about one foot long.	158	Two concrete garden ornaments and two plinths.
128	Two blue glazed terracotta pots.	159	A wrought iron footman, two flat irons and a cast iron grid.
129	Four vintage style cart wheels.	160	A marble washstand top, two floral tiles, etc.
130	A large slab of red granite, 43 1/2" x 27 3/4" x 1 1/2" thick.	161	A crate of old bottles, stoneware jars, wireless valves, etc.
131	A wheel and tyre for Ifor Williams horse box 165 R13.	162	A collectable Vintage "Baby Daisy" hand-operated vacuum cleaner, a Singer sewing machine, etc.,
132	"SAS Superclamp" wheel clamp for 10-15" wheels.	163	A Honda HRB 425C petrol mower [engine turns and has good compression].
133	"Bulldog Titan" wheel clamps	164	A tray of Vintage carbide bicycle lamps, a carbide motorcycle headlamp, etc.,
134	Trolley jack.	165	A galvanised water butt/paraffin drum with brass tap, and a lead cistern.
135	Two tins of "Santex" quick dry stabilising solution.	166	A quantity of cast iron items including wheels, leg vice, scales, etc.
136	Two Tennis nets with Ernlake folding tennis posts.	167	A quantity of iron items including rain hoppers, bake-stones, pick axes, a large pipe cutter, two crow-bars and a cart horse wagon brake shoe.
137	A quantity of large square Ice cream tubs with lids.	168	A quantity of cast iron items including shoe lasts, fire grate, etc. plus galvanised buckets.
		169	A log splitting axe, a crutch and sheep dipping paddle.

170	A garden tipping trolley.	206	Six bags of kindling.
171	A petrol mower [pull cord broken], but blade turns, so engine not seized.	207	14 lengths of Cedar 4" x 3" average length 43".
172	Three mobility scooter tyres, drainage chamber base, etc.	208	4 lengths of Cedar 8" x 3" x 47 1/2" long.
173	A "Parker" petrol mower [engine turns and has some compression].	209	4 lengths of Oak: two @ 4 1/2" x 3", one @ 5" x 3" and one @ 4" x 3", 33" - 48" long.
174	Three plastic trestles.	210	2 lengths of Oak: one @ 6" x 3" x 45" long, the other 6" x 3" x 46" long.
175	A wrought iron table base, 43" x 20 1/2" x 25".	211	2 lengths of Oak: 6 1/2" x 3" x 36" and 5 1/2" x 5 1/2" x 36".
176	Two curved flue pieces and a cowl.	212	4 lengths of oak: three @ 5" x 3", one @ 4" x 3", 56" - 65" long.
177	Four Landrover 16" freestyle alloy Wheels and tyres 205 R16, five-stud fixing.	213	One length of Oak 8" x 9 1/2" x 51".
178	A quantity of "Clark Drain" drainage systems.	214	3 lengths of Oak 5" x 3" x 66".
179	A large plastic garden storage unit, 55 1/2" x 32" x 46".	215	2 lengths of Oak: 5" x 3" and 4 1/2" x 3" both 57" long.
180	Four folding deck chairs/loungers.	216	6 lengths of Oak 5" x 3" x 35".
181	A "Herbert and Sons Ltd" scales.	217	2 lengths of Oak 8 1/4" x 32 one 50" long, the other 54" long.
182	A plastic garden storage unit, 59" x 31" x 44 1/2".	218	One length of Oak 6" x 5 1/2" x 51".
183	A large quantity of gardening items including terracotta pots, weed killer, kneeler, etc.	219	2 lengths of Oak 7 1/2" x 3" x 61".
184	A vermin cage, airer, vegetable rack and fire guard.	220	One lengths of Oak 7" x 7" x 55 1/2".
185	Two bar stools.	221	One length of Oak 7" x 9 1/2" x 73 1/2".
186	A wheelbarrow on pneumatic tyre, [flat].	222	One length of Oak 7" x 9 1/2" x 49".
187	A "Haemmerlin" wheelbarrow on pneumatic tyre and a Qualcast step stool.	223	6 lengths of Oak 5" x 3" x 52".
188	A "Quest Elite" two person folding bench, 65 cm x 116 cm x 93 cm.	224	One length of Oak 7" x 7" x 44".
189	A "McCulloch" Elite 49PD petrol mower with Briggs and Stratton engine [engine turns and has good compression].	225	One length of Oak 7" x 7" x 43".
190	Two chrome clothes rails and three modern clothes valets.	226	One length of Oak 11 1/2" x 7" x 44".
191	Three metal folding tables.	227	One length of Oak 7" x 7" x 42".
192	A unit for hiding a fire place with chalk board front.	228	6 tanalised posts 6" x 3" x 81".
193	A "Sealey" tool trolley, 26 1/2" x 18" x 33" high.	229	6 Tanalised posts 6" x 3" x 81".
194	A pair of draughtsman's adjustable stools [seats a/f].	230	6 Tanalised posts 6" x 3" x 81".
195	A post knocker.	231	6 Tanalised posts 6" x 3" x 81".
196	A terracotta chiminea on stand, 28" tall including stand.	232	4 Tanalised posts 6" x 3" x 81".
197	A spark guard, companion set and a flat iron.	233	12 lengths of softwood: ten @ 8" x 2", two @ 6" x 2", average length 56".
198	A pair of concrete planters, 19" diameter x 14" high.	234	11 lengths of softwood: eight @ 8" x 2", three @ 9" x 2", average length 60".
199	A concrete bird bath [sectional], 9 1/2" square x 22" high.	235	9 lengths of Tanalised timber 4" x 1" x 118" - 189" long.
200	Four concrete garden ornaments in the form of an animal band.	236	17 lengths of Tanalised tongue and groove 142" long.
201	A bag of Oak offcuts.	237	16 lengths of Tanalised tongue and groove 142" long.
202	A bag of softwood offcuts.	238	16 lengths of Tanalised tongue and groove 142" long.
203	A bag of softwood offcuts.	239	16 lengths of Tanalised tongue and groove 142" long.
204	Eight bags of softwood offcuts.	240	16 lengths of Tanalised tongue and groove 142" long.
205	A quantity of builders bags.	241	7 Tanalised posts 4" x 4" x approx 106" long.
		242	40 lengths Tanalised Shiplap - average length 42".
		243	6 lengths of Cedar 7 1/2" x 1 1/4" x 189".
		244	6 lengths of 8" Weatherboard Cedar: four @ 142" long, two @ 189" long.

245	5 lengths of 6" Weatherboard Cedar 142" long.	289	A teak patio table, 64" x 35" x 28 1/2" with five chairs.
246	10 lengths of Cedar 6 1/2" x 1" x 141".	290	A pair of stacking tables, 23 1/2" square x 28" high.
247	10 lengths of Cedar 6" x 1" x 141".	291	A cast iron stand, 25" x 10" and a pedestal base, 31" high.
248	11 lengths of Cedar 6" x 1" x 141".	292	Cast iron bird bath, 20" x 13" diameter.
249	2 lengths of Cedar 6" x 1 3/4" x 141".	293	Two green plastic wheelie bins with builders bags.
250	4 lengths of Cedar 8" x 3" x 94".	294	Two plastic wheelie bins, (one green and one black).
251	12 lengths of Cedar 8" x 1 1/4" x 94".	295	An aluminium bistro table, 23 1/2" diameter x 28" high, with two chairs. ****
252	50 lengths of Tanalised Shiplap - average length 93".	296	A "Rip Curl" Kayak, approx 13 ft long.
253	10 lengths of Cedar 6" x 1" x 94".	297	Three pieces of slate [one 5'3" x 10" plus two others].
254	16 lengths of Tanalised Featheredge: nine @ 5", seven @ 6", 50" - 69" long.	298	A "Stovax" stove, 24" x 24" x 12' approx.
255	50 lengths of Tanalised Shiplap - average length 60".	299	A plastic barrel water feature and two hanging baskets.
256	10 lengths of boards (some tongue and groove) 6" x 1 1/2" and 7" x 1 1/2", average length 90".	300	A cast iron boiler pot on feet, 20 1/4" diameter x 17" high.
257	11 lengths of Tanalised timber 6" x 1" x 82" - 96" long.	301	A Leyland 154 Diesel-engined Farm Tractor, believed to have been manufactured in the late 1970s, there are no number plates or registration document with the tractor so we cannot, unfortunately, be specific about its age. The Frame No. is 154D 16568 and the engine Serial No. is 15T/853A/D 3030. She is fitted with a cab and we have now, fortunately, been able to find the doors, which are now hung, but the near-side door requires a little adjustment in order to close. The tractor is running on turf tyres, the rears being 9.5 / 9 - 24. This tractor is sadly from a deceased's estate and had not been running for over a year, we attended with jump leads and, although the heater plugs were not working at the time, after being turned over on the starter for about 30 seconds, she fired up without the use of Aerostart. She ran normally and she was driven onto a trailer and brought to the sale-rooms, the steering was very stiff but this has now been attended to with greasing of the king pins. The 154 was the smallest tractor made by Leyland at the time, weighing only a fraction over one tonne, the indirect injection Diesel engine with a capacity of 1,489 cc produces about 28 h.p. at 2,500 R.P.M. and is similar to that which was fitted to Leyland Sherpa vans having a bore of 73 mm and a stroke of 89 mm. The gearbox has 9 forward gears and 3 reverse, a wide range of gears to suit most requirements, even slow enough for seeding work on a market garden, but also capable of about 14 m.p.h. in top gear. There is a two-speed P.T.O. with 1,000 or 540 R.P.M. available, there is also a pick-up hitch and the
258	12 lengths of softwood 8" x 12" average length 60".		
259	13 lengths of Tanalised timber 4" x 1" x 48" - 102" long.		
260	3 lengths of Cedar 4" x 2" x 189".		
261	4 lengths of Tanalised timber 3" x 1 3/4" x 140".		
262	9 lengths Tanalised Decking 6" x 142", plus two shorter lengths.		
263	18 lengths Tanalised Capping 3" x 72" - 118" long.		
264	9 lengths of Tanalised 8" x 1" timber: four @ 189" and five @ 142" long.		
265	12 lengths of Tanalised Capping 6" x 118" long.		
266	12 lengths of Tanalised Capping 6" x 118" long.		
267	30 lengths Tanalised Tongue and Groove 165" long.		
268	40 lengths of Tanalised Tongue and Groove 189" long.		
269	40 lengths of Tanalised Tongue and Groove 189" long.		
281	A pair of concrete planters [1 a/f], 20 1/2" square x 10".		
282	An oblong concrete planter, 27 1/4" x 9 3/4" x 10 3/4".		
283	A quantity of terracotta pots.		
284	Two galvanised watering cans, a wicker stool and a concrete planter.		
285	A stone trough, 17" x 15" x 9".		
286	Concrete planters, stepping stones, etc.		
287	Decorators wooden step ladder.		
288	A green plastic tub chair with under-seat storage.		

hydraulic arms are apparently capable of lifting 1,000 lbs (454 Kg). As can be seen, the laminated windscreen is cracked and requires replacement. Here we have a lightweight, but very capable, tractor only 60" wide with the wheels as currently configured, and once a registration document has been obtained, she would be an ideal steed for those popular road runs, or of course to perform on-farm chores. She is starting "on the Button" but the battery on the tractor is not included, as it is borrowed, the original proving to be unserviceable.



- 302 A 2007 Mitsubishi Colt Clear Tec 1.1 CZi, 3 door hatchback with 1124 cc 3-cylinder Petrol Engine and 5 Speed Manual Gearbox, finished in Silver, first registered on 30th April 2007, currently showing 127,943 Miles, (Mileage not warranted correct, but appears likely to be from inspection of the D.V.L.A. M.O.T. history), MOT'd Until 3rd November 2025, Registration No. BG07 MFU, The V5C is present. ***As with all motor vehicles sold through our auctions, this vehicle is sold in its current condition and all vehicles should be inspected in person prior to bidding. N.B. BUYERS PREMIUM ON THIS LOT 10% + V.A.T. (Total premium 12% plus any specific on-line bidding fees).



- 303 A 2006 Mitsubishi Shogun Sport 2.5 TD [114] Trojan, 5 door truck with 2477 cc 4-cylinder Diesel Engine and 5 Speed Manual Gearbox, finished in Black, first registered on 7th September 2006, currently showing 135,198 Miles, (Mileage not warranted correct, but appears likely to be from inspection of the D.V.L.A. M.O.T. history), MOT'd Until 18th December 2025, Registration No. CE56 LDV, The V5C is present. ***As with all motor vehicles sold through our auctions, this vehicle is sold in its current condition and all vehicles should be inspected in person prior to bidding. N.B. BUYERS PREMIUM ON THIS LOT 10% + V.A.T. (Total premium 12% plus any specific on-line bidding fees).
- 304 A 2009 Volkswagen Tiguan TDi 4-Motion, 5 Door, 4 Wheel Drive SUV with 1968 cc 4-cylinder turbo Diesel Engine and 6 Speed Manual Gearbox, finished in Silver, first registered on 11th November 2009, currently showing 140,454 Miles, (Mileage not warranted correct, but appears likely to be from inspection of the D.V.L.A. M.O.T. history), MOT'd Until 18th February 2026, Registration No. KP59EBL. Recent new turbocharger and oil/filter change, and two new tyres also fitted. The V5C is present. ***As with all motor vehicles sold through our auctions, this vehicle is sold in its current condition and all vehicles should be inspected in person prior to bidding. N.B. BUYERS PREMIUM ON THIS LOT 10% + V.A.T. (Total premium 12% plus any specific on-line bidding fees).
- 305 A Numatic TT4045 Mains powered Scrubber Dryer in working order.
- 306 Three painted wrought iron patio chairs having mesh seats.
- 307 Three black glazed graduated pots plus two others.
- 308 An antique garden roller.
- 309 A large metal safe by G.O. Talbot & Co, 24" x 23 1/2" x 30" (keys in office).
- 310 An "Axminster" power tool station Mortising machine.
- 311 A workshop drawer unit, 33 1/4" x 26" x 9".
- 312 A galvanised bin and bracket.
- 313 A pet carrier, cool box, etc.
- 314 Three trays of workshop miscellaneous, planes, rasps, adjustable square, a mitre clamp, hand tools, etc.,
- 315 A wine rack, wicker baskets, copper pipe, etc.
- 316 A Jockey wheel.

317	Three trays and a tool box of workshop miscellaneous, Stilsons, drill bits, hard hat, shears, anti-freeze tester, etc.,	353	Three panelled interior doors with brass handles, 77 1/2" x 33".
318	Six trays of workshop miscellaneous, sprays, liquids, welding masks, socket set, etc.	354	A pair of Oak panelled doors, 78" x 30".
319	A Vintage "Simplex" ladder and two step stools.	355	Three pieces of corrugated plastic roof-light sheeting - approx 8 ft x 42 1/2".
320	Set of four wrought iron chairs finished in gold [no seats] plus two others.	356	A galvanised gate, 60" wide x 45" high.
321	A large garden wheelbarrow [a/f] and contents.	357	A timber gate, 94 1/4" long x 49 1/4" high.
322	A garden gate, 48" x 42" tall.	358	A Pramac P6000S Super Silent Diesel-engined Generator (Manufactured in Spain), understood to be 4.39 KW and having an electric start, single-cylinder, air cooled engine and mounted in an insulated two-wheeled box-trolley with fold-down loop handle. There is a long-run diesel fuel tank currently appearing to be about half-full. The generator output-board has three of 115 volt and two of 230 volt outlets. The generator is sadly from a local deceased estate and, although not having been used for some time, started immediately at the time of collection. The hour-meter is currently indicating 563.88 hours, which appears plausible. A video is available to view on-line (filmed Wednesday 6/08/2025) with the generator powering a circular saw-bench.
323	Two scaffold ladders.		
324	A quantity of plastic pipe.		
325	Three planters and a cast iron stool.		
326	A cooking pot, 14 1/4" x 11".		
327	Four galvanised crowd barriers.		
328	A galvanised storage rack, 37 1/2" x 23" x 42".		
329	Blue and orange racking, 49" x 24 1/2" x 78 1/4".		
330	Reclaimed Oak floorboards, various sizes.		
331	A quantity of reclaimed boards/beams in various sizes.		
332	Six arched fence panels, 6 ft x 6 ft.		
333	Two white interior doors with brass handles and hinges.	401	A Vickers sewing machine, an angle poise lamp, an oil-filled heater, etc.,
334	A bag of softwood off cuts.	402	An Oak draw-leaf table, 33" square x 30" high.
335	A bag of softwood off cuts.	403	An "Electrolux" vacuum.
336	A bag of softwood off cuts.	404	Electric garden cultivator.
337	A quantity of plastic soil pipe, chimney flue, etc.,	405	Electric garden shredder.
338	A vintage Potato scales by E. and G Corderoy, London.	406	Flymo garden vacuum.
339	Blue and orange racking, 36 1/2" x 24 1/2" x 79".	407	A Sony radio/cassette player.
340	An "Ironcrete" garden roller.	408	"Merak" type Q bike carrier (for vehicle tow bar).
341	A quantity of tower scaffolding components.	409	A "Kranzle" high pressure cleaner/washer with full kit.
342	A cast iron wall mounting corner hay rack, 28" x 31".	410	A plastic toolbox and contents including pliers, pincers, a wrench, upholsterer's strap stretcher, a hammer, a saw tooth setting device, etc.,
343	A quantity of roof shingles for a felt roof, 94 1/2" long x 2" wide.		
344	An aluminium roof ladder with wheels and over-ridge mount.	411	A Bosch electric hedge trimmer and a tile cutter.
345	Aluminium ladder.	412	"Challenge" mitre saw.
346	A vintage two-stroke petrol-engined rotary cultivator. Engine did not turn at the time of cataloguing.	413	A 240 volt to 110 volt transformer.
347	A teak sun lounger with cushion.	414	A Bosch battery powered strimmer with charger.
348	Three plastic barriers.	415	A G-tech battery powered Vacuum with charger.
349	An Oak beam/post, 7" x 7" x 83" long.	416	Black and Decker battery-powered long-reach chainsaw/pruner with charger.
350	Two roadwork signs.		
351	Three panelled interior doors, 77 1/2" x 33", with brass handles [one with lock and key]	417	A Ryobi battery powered hedge trimmer and strimmer, (interchangeable battery and charger).
352	Four panelled interior doors with brass handles, 77 1/2" x 33", [one with lock].	418	A Powercraft Table Saw with rise & fall and angle adjustment, with fence present.

419	A petrol strimmer.	462	Two boxes of remote control helicopter parts etc.
420	A "Makita" petrol strimmer.	463	A brown leather reclining sofa.
421	The "Handy" petrol strimmer.	464	A suitcase and holder.
422	Pair of skis and poles.	465	A media protector/safe [key in office]
423	A Table saw and a pressure washer.	466	Bikers 2-way radio communication system and a vax Grime Master.
424	A G-Tech battery powered lawn mower with battery and charger.	467	Four mobility scooter wheels and tyres [new]
425	A lathe and a "Brown Pestell" motor. ****	468	Cabbage patch dolls etc.
426	A "Nippy" drill press vice.	469	Sealey four piece ratchet pipe Threader kit, model PTK 991, sizes 1/2", 3/4", 1" and 1 1/4" and a vintage hole Punch (no. 225 series).
427	An "Echo" petrol hedge trimmer.	470	Four "Elephant Feet" furniture leg raisers and back support for a chair.
428	A Stihl MS 180 petrol chainsaw.	471	Two adjustable music stands.
429	A Stihl 020 AVP super electronic petrol professional pruning type chainsaw.	472	A quantity of curtain poles and rings.
430	A Homelite petrol leaf blower.	473	A large curtain pole with rings approx 87".
431	A "T" square and a frame saw.	474	A 1960's light Oak Bureau 30" wide x 14 1/2" deep x 40 3/4" high.
432	Mountfield petrol multi tool.	475	Wrought iron and mesh fire guard.
433	A Clarke 150 mm bench grinder, plus another.	476	A pair of four panelled fire doors.
434	A Shapercraft Model 1000 fret/scroll saw.	477	A Gilt picture frame 34 1/4" x 44 1/2".
435	A Cobra hover mower with four-stroke petrol engine and wheels.	478	A trolley and mobility chair.
436	A Travel cot and mattress.	479	A shopper, mop etc.
437	A Leica theodolite tripod.	480	A quantity of golf clubs.
438	A Hawksmoor cordless turbine blower [new in box].	481	Two filing cabinets, file organisers, an urn style vase and a skate board.
439	Two motorcycle ornaments/models.	482	A filing cupboard 22 1/2" x 67" x 18".
440	Two G-Tech battery powered hedge trimmer's, box with charger etc.	483	A metal filing cabinet 15 3/4" x 50 1/4" x 15 3/4".
441	A G-tech hand held mini vac and a box of Hoover bags etc.	484	A golf bag and clubs.
442	A box of games and guitar holders.	485	A "Trek" FX2 flat bar road (fitness) Bicycle, size medium, Shimano Altus 2 x 9 drive train, Tektro disc brakes.
443	Three "Taylormade" golf clubs	486	A rustic dresser top 47" x 44" x 9".
444	Two pairs of Steelite safety shoes size 9	487	A "Kasydoff" clothes airer.
445	A box of Children's toys, mugs etc.	488	A "Giant" Revolt 1 gravel Bicycle with drop handle bars, size medium with Shimano GRX group set, 2 x 10 drive train.
446	A box of bags, cycling helmet etc.	489	A piece of insulation board, 47" x 63" x 4" thick.
447	Two armchairs.	490	A swivel office chair and modern desk/side table 27 1/2" x 15 1/2" x 28 1/2".
448	Two boxes of china, jugs, plates, teapots etc.	491	A painted pine table 47" x 29 1/2".
449	A bedroom chair and three Kidcraft stools.	492	Two folding chairs with cane seats and back rests.
450	Two kitchen chairs.	493	A box of various walking sticks and shooting sticks.
451	Two kitchen chairs, one spindle back.	494	A metal computer desk, 27 1/2" x 17" x 31".
452	A green Lloyd loom style linen basket.	495	A Pine stair rail/bannister with fixings, 123 1/2" long.
453	A Lloyd loom style linen basket with glass top.	496	A quantity of pine bed slats and sections of kitchen work surface.
454	A carved shell and Buddha, plus a Robert's radio/.	497	Five wooden folding chairs.
455	Three Le Creuset frying pans and a food processor etc.	498	Three plastic shutter blinds 82 1/4" x 23".
456	A quantity of Vintage glass bottles.		
457	A wooden tripod lamp base.		
458	A Jardiniere on stand and an owl ornament.		
459	A "Gemini" turntable, Goodman's sound bar, light, fan, etc.		
460	Three boxes of books, DVD's clothing, squash rackets etc.		
461	A pair of "Snowbee" stocking foot chest Waders [new] size L, 5' long.		

499	Wooden pigeon hole unit [a/f] 58" x 26" x 9".	535	A quantity of miscellaneous, cast iron items, alcohol, china, etc.
500	A shelf unit for assembly [new in box]	536	Two boxes of miscellaneous, scales, rope, salt glazed jar etc.
501	Large quantity of "Carnival" ceramic floral wall tiles, 6" square.	537	A cool box , game set, food waste bin etc.
502	A tray of hand tools, drill, spanners etc.	538	A box of wallpaper and fabric.
503	Six boxes of 40 mm coach screws.	539	A box of Kitchenalia, trays, dishes etc.
504	Two boxes of hammers, screws, nails, mallets etc.	540	Two boxes of miscellaneous china, glass, treen etc.
505	Four boxes of miscellaneous tools, planes, power drill, sander, spanners etc.	541	A large quantity of Meccano in a red painted trunk.
506	A BCT Outdoor 4.5 meter Bell Tent (tear professionally repaired and waterproof).	542	A large glass hurricane vase 20" tall , and a small box of china.
507	A tin of brass door handles.	543	Two boxes of mixed china, willie worm mugs, vases etc.
508	A tray of household miscellaneous..	544	A box of china, canisters, cottage ware teapot etc plus a canteen of mixed cutlery.
509	Two boxes of power tools, hammers, screwdrivers etc.	545	A box of miscellaneous plates, Clydesdale ornaments etc.
510	A box of ring binders and a folding bed table.	546	A quantity of household miscellaneous, wine rack, rice cooker, enamel kettle, fruit dish etc.
511	Two saddles, bridles, stirrups etc.	547	A box of model Vehicles, Corgi, matchbox etc.
512	A Swan boiler, set of Boules and a CD rack.	548	Three boxes of glass light shades.
513	Two boxes of drinking glasses, bread crock, canisters etc.	549	A quantity of Children's soft toys "Me to you " etc.
514	A box of Kitchenalia.	550	A quantity of cushions.
515	An enamel jug, spice rack etc.	551	A shop scales with cast iron weights, plus a box of brown envelopes.
516	Two pairs of "Power slide" off road Ski Boots with wheels, with poles and accessories size 5 and 8	552	A 'Bush' radio, a filing box and a pull up bar.
517	A "Rainbow" super-quilt, quilted horse rug.	553	Three boxes of Kitchenalia to include: utensils, canisters, toast rack, etc.
518	A 6 ft half Christmas tree and a box of decorations.	554	A quantity of china to include: meat plates, tureens, plates, dishes, etc.
519	Two boxes of miscellaneous, flagon, green bottle neck vase, extension lead etc.	555	Ceiling lanterns, wall sconces, etc.
520	A box of miscellaneous, puzzle box, bottle opener, vases etc.	556	Two boxes of mixed china and glass.
521	Sander, planer and a jigsaw [all sold as seen]	557	A laundry bin, a cushion and a 'Sony' hi-fi with speakers.
522	A tray of hand tools, hammers, shears, files etc.	558	A box of miscellaneous to include: DVD's, shoes, scales, etc.
523	A box of miscellaneous, glasses, trinket boxes etc.	559	A picnic hamper with contents and a box of miscellaneous to include: mugs, etc.
524	Child's car seat and buggy.	560	Three boxes of miscellaneous to include: lamps, postcards, candle holders, etc.
525	A leg exerciser and a wrought iron magazine rack.	561	A red wooden box, possibly for explosives with padlock (key in office).
526	"Le Coq Sportif" racket and two shooting sticks.	562	A food warmer, pots, pans, etc.
527	A pair of office swivel chairs.	563	A large quantity of catering china and glass to include: plates, jugs, mugs, coffee/hot chocolate glasses and mugs, etc.
528	A Viking Husqvarna" sewing machine in case.	564	A box of china, pottery, etc.
529	A wicker log basket and a box of kitchenalia.	565	An enamel bread bin and a stool.
530	A wooden tool chest and a small drawer unit of sewing items.	566	A box of Kitchenalia to include: a kettle, fruit basket, cafeteria, etc.
531	Child's John Deere ride on tractor with trailer.	567	Two boxes of miscellaneous to include: china and glass.
532	Three boxes of miscellaneous, books, DVD's "Bumbo" , pine cones, Child's walker , garden lights etc.		
533	A Kenwood Chef with attachments etc.		
534	Alsation plaster/chalk ornaments, bookshelf, wicker baskets, Armand Marsielle doll etc.		

568	Two boxes of Kitchenalia to include: utensils, ginger jar, glasses, bottle opener, etc.	604	An 'Electrolux' car vacuum and a 'Dyson' hand held vacuum (in working order at time of lotting but no attachments or charger.
569	Three boxes of miscellaneous to include: a lamp, milk frother, glass storage jars, skillet, etc.	605	A 'Dyson' upright vacuum.
570	A box of decoy ducks for assembly.	606	A quantity of exercise equipment, to include: a bench, aerobic steps, Ab roller, etc.
571	A box of miscellaneous to include: ornaments, mugs, table cloth, etc.		
572	Two wrought iron plant stands, one 33" tall and the other 23 1/2" tall with a glass bowl on top.		
573	A 'Draper' cordless drill/screw driver.	701	A pine double wardrobe, 60" x 70 1/2" x 24" deep [key in office].
574	Four boxes of Kitchenalia to include: a blender, mugs, utensils, dishes, etc.	702	A satinwood wardrobe having carved detail with bevelled mirror and lower drawer approx 36" x 83" x 15" deep.
575	A box of plates to include: meat plates, etc. and a jardiniere stand, 23 1/4" tall.	703	A Mahogany bow fronted corner cupboard with lower shelf, 29" x 75" high x 18".
576	A parasol and a hammock.	704	A Mahogany corner cabinet, 79" high x 24" x 33".
577	A 'James H Bourne' wooden fruit crate.	705	A quantity of prints etc.
578	A 'Breville' super steam ceramic iron (as new), chopping boards, etc.	706	A Ladies two piece and a blazer size 14.
579	A box of Kitchenalia, etc.	707	A folding cane back rest and a piece of net curtain.
580	Two boxes of miscellaneous to include: china, tins, pictures, etc.	708	A pair of lined pencil pleat curtains, 62" drop x 66" wide.
581	Two boxes of action figures to include: Marvel, Star Wars, etc.	709	A purple "Rochamp" table lamp.
582	Two boxes of cable and capping, corner fittings, flat bends, etc.	710	A blue and cream ground bordered, patterned and fringed Chinese rug, 30" x 65".
583	Two boxes of miscellaneous china and glass.	711	A woven rug in blue/beige and gold stripe pattern, 36" x 62".
584	A brass champagne bucket, 26 1/2" tall.	712	A large bevelled mirror having silver coloured frame, 30" x 42".
585	A small box of china to include: Johnson Bro's Haddon Hall dish, etc.	713	A large bordered and patterned rug in red, beige and blues, 67" x 90".
586	A box of miscellaneous china and glass.	714	A blue, beige and pink Chinese hearth rug, 24" x 53".
587	A box of pub ash trays, jugs, etc.	715	Two boxes of green Denby ware, mugs, egg cups, coffee pot, tureens etc.
589	A box of miscellaneous china and glass.	716	A double divan bed with "Dorlux" mattress.
590	A set of 'Adam' scales, maximum weight 75kg.	717	A bevelled dressing table mirror, 31 1/4" x 22".
591	A box of various iphones, etc (sold as seen).	718	Two Salon hairdryers, "Eclipse" and "Miranda".
592	Two boxes of miscellaneous china and glass, a clock, etc.	719	A pine dresser rack, 58 1/2" wide x 46 1/4" x 11".
593	A green metal footman.	720	A multi-coloured block patterned rug, 63" x 90".
594	A quantity of camping equipment to include: chiller/warmer, kitchen table and bench, cupboards, etc.	721	A pair of CD racks.
595	A desk chair.	722	A "Hotpoint" under-counter fridge.
596	Two boxes of china to include: Royal Doulton, etc.	723	A "Swan" chest freezer.
597	A quantity of Commemorative mugs, etc.	724	Three wall mirrors, one bevelled with gilt frame, etc.
598	A bag of handbags, a shower curtain, etc.	725	An oval gilt framed mirror, 27" x 23 1/2" plus another.
599	A 'Titan' wet and dry vacuum.	726	A pine wall shelf, 24 1/2" x 25" x 4 1/2".
600	A large quantity of children's toys, games, etc.	727	A Mahogany double wardrobe having two oval bevelled mirrors to front, 46" x 78" x 16 1/2".
601	A red suitcase and a box of china, etc.		
602	A box, a suitcase and a bag of book and DVD's to include: The Lord of the Rings, etc.		
603	A quantity of 'Samsung' office telephones and cables, etc.		

BRIC-A-BRAC (INSIDE LOTS)

728	A "Stag Minstrel" wardrobe, 48" x 69 3/4" high x 22".	760	A Phillips compact Disc & tape player with speakers and remote.
729	An Oak wall shelf/plate rack, 69" wide x 53" x 9".	761	A modern sideboard 31 1/2" x 14" x 32".
730	An Art Nouveau style Hallstand having a green tiled back [no drip tray], 70" high x 22" x 10 1/2".	762	A white metal two tier shelf unit 17" x 12" x 23".
731	A Standard lamp with brown lace shade plus a reading light.	763	A 1950's/60's drop leaf dining table with four chairs having faux leather seats.
732	A "Solax Easy Life" Mobility scooter, (as new), keys, manual and charger in office.	764	A coffee table with bevelled glass top 42"x 22" x 16".
733	A stained pine dining table 70" x 35 1/2" x 28 1/2" with four chairs.	765	A wine table with inlaid detail to top 18 1/4" diameter x 26" high.
734	A box of board games including Star Trek, The Sweeney, etc.	766	LG and Philips DVD players, PC games etc.
735	A Vintage toy/model fuel station.	767	A painted pine corner TV unit 34" x 20" x 22".
736	A large carved mask, 41" long.	768	A light oak hi-fi/TV unit 39 1/2" x 23"x 28".
737	A large Satinwood triple Wardrobe having carved detail to doors and central mirror, approx 72" x 82" x 22" deep.	769	A conference room chair.
738	A lounge unit, 71" x 15" deep x 74" with electric illuminations.	770	An oval topped occasional table on castors 2' x 17 1/2" x 20".
739	A 1950's Kitchen Compactum, 34" x 21" x 70" high.	771	A Panasonic 54" flat screen TV.
740	A shoe storage unit, 35" x 12" x 50".	772	A mahogany shelf unit 54" x 11" x 30 1/2".
741	Four pairs of gent's shoes including "Loake Brothers brogues, size 8 1/2 approx.	773	A box of glass vases,
742	"Pioneer" PL-560 turntable.	774	A Kodak printer/ scanner with ink cartridges- no power lead.
743	A box of CD's and DVD's.	775	A floor standing bookcase 3' x 12" x 25" high.
744	An oval pine kitchen table, 53" x 29 1/2" x 29".	776	Bread crock, vases etc.
745	A Mahogany wine Table, 25 1/2" high x 22 1/2" diameter.	777	A pine kitchen table 35" x 5' x 30 1/2".
746	A pair of ceiling lights with leaf decoration.	778	A nest of two tables.
747	Four walking sticks.	779	A spinning wheel.
748	A painted drop leaf table, 57" x 35" x 30" [extended].	780	A coffee table having smoky glass top 34" x 17" x 14".
749	A lightwood Kitchen table having drop-leaf to one end, 80" x 36" (open), 64 1/2" x 36" (closed) x 30" high plus four matching chairs.	781	A gilt framed tryptic mirror,
750	A "Toshiba" 42" flat-screen Smart TV, with remote.	782	A large Teddy bear and a stool.
751	A Vintage cricket bat and golf club.	783	A dressing table. 57" x 16 3/4" x 58 1/2".
752	An "Anbercraft" tile topped coffee table with lower magazine rack, 33" x 17" x 15 1/2" high.	784	An Egyptian tapestry picture, plus another.
753	A Bamboo shelf unit, 75" x 29" x 15 1/2" deep.	785	A glass topped occasional table having floral tapestry underneath, 22" x 19" x 14".
754	A Westminster Chiming Quartz wall clock.	786	A satinwood two drawer chest having brass drop handles, 32" x 17" x 31".
755	A lightwood tea trolley, 24" x 12" x 29" high.	787	A dress makers dummy and a walking stick.
756	A pine coffee table having cream painted base, 3 ft x 2 ft x 18".	788	A computer/office swivel chair.
757	A Bamboo hat stand and a cane shelf unit, 14" x 14 1/2" x 30".	789	A set of mahogany library steps, 17 3/4" x 19 3/4" x 30 3/4".
758	A framed photo of James Dean and a bevelled mirror.	790	An 'Ercol' wall mounting shelf/plate rack, 38" x 19".
759	A Grey tartan armchair having stud detail.	791	A pair of bedside cabinets, 19 1/2" x 14 1/2" x 21".
		792	A vintage metamorphic high chair.
		793	A white painted wall shelf, 19 1/2" x 21 1/2" x 4 3/4" deep.
		794	An oak desk having three drawers to the right and a drop leaf to the left, 3' x 19 3/4" x 28".
		795	A pine dresser top, painted purple, 59" x 13" x 44 3/4".
		796	A 'Tomy' ice cream maker, two decorative wire baskets, etc.
		797	A large artist easel, approximately 68" tall.

798	Two kitchen cupboard units with drop down doors and glass shelves, one being 37" x 14 1/2" x 16 1/2" and the other 28" x 14 1/2" x 16 1/2".	833	A cane seated folding chair (as found) and a wooden box.
799	A light oak coffee table. 39 1/2" x 20" x 17 1/4".	834	A 'Bush' radiogram.
800	A pale green upholstered Ottoman on castors, 55" x 21" x 18".	835	A box of ladies shoes to include: Kurt, Geiger, etc. mostly size 5 *Eu 38).
801	A children's blue leather arm chair	836	A mahogany display cabinet, 19" x 43 1/2" x 18".
802	A pine corner self, 21" x 11 1/2" x 33" high.	837	An oak floor standing bookshelf with glass sliding door, 3' x 9" x 37".
803	A nest of three oak tables.	838	A wicker hamper.
804	A stained pine floor standing bookshelf, 24 1/2" x 8" x 3' high.	839	A footstool (as found).
805	An 'Ikea' white painted pedestal table, 43" diameter x 29 1/2" high.	840	A bongo drums and a fishing tackle box.
806	A pine kitchen table, 71" x 34 1/2" x 30 1/2".	841	BT telephones etc.
807	An arched topped mirror,a flower poster, etc.	842	A blue painted table lamp (no shade)
808	A nest of three tables and a bedside cabinet.	843	A 'Bose' sound dock, and 'Sony' speakers, etc.
809	A tapestry fire screen of a deer drinking from a woodland stream, and a coffee table.	844	A quantity of LP's and a print of 'Scammel's Farm'.
810	An 'Elite' bicycle trainer.	845	A pair of 'Elegance' lined jacquard curtains, 66" x 72".
811	A reclining salon chair.	846	A cream and floral bed spread.
812	A pair of dining chairs having faux leather seats and back rests.	847	Two pairs of 'Steelite' safety boots size 9, and a 'Makita' radio.
813	An anatomical wooden horse, boxed.	848	A rocking horse.
814	Two table lamps with cream shades.	849	Frosted glass shades, a jug and two candlesticks.
815	A Hi-fi cabinet, 40" x 13" x 31".	850	A pine dressing table mirror, a key box, etc.
816	A Danish extending dining table, 47" x 31" x 28" high extended, with four chairs.	851	A 'Delsey' fishing box
817	A coffee table 42 1/2" x 21 1/2" x 18 1/2", plus a matching side table 20" x 17" x 22".	852	A small basket of Troll dolls.
818	Two wine tables.	853	A wooden box with Action men and cloths.
819	A nest of two tables and a telephone table, 27" x 23" x 20"	854	A gilt framed bevelled mirror, 39" x 27 1/2".
820	A chrome and leather saddle stool.	855	Two boxes of wicker baskets, door furniture, cushions, fabric.
821	A cheval mirror.	856	An ornate pediment painted in cream and gilt, 30" x 14 1/4".
822	Six contemporary black faux leather dining chairs on cantilever chrome legs,	857	Wireless 'Apple' computer mice, 'Mac Box Set', 'Gigaset' phones, etc.
823	A picture of St. Nicholas Church (Guildford), plus another.	858	A wicker hamper and a basket.
824	An old pine school desk, 22" x 18" x 26".	859	A 'Sony' TV/DVD player with remotes.
825	A wall mounting display cabinet with key, 26" x 7" x 28".	860	A 'Miranda Titan' tripod and an 'Alba' DVD player (as new in box).
826	A modern wood and metal coffee table, 45 1/2" x 24" x 19".	861	Nine volumes of the 'Children's Treasure House' and 'The Story of Living Things and their Evolution'.
827	Two mahogany dining chairs having striped and floral upholstered seats, one being a carver.	862	A bamboo chest and contents.
828	A wing back armchair, believed to be Edwardian.	863	A box of children's toys.
829	A 'Zenox' steam cleaner (as found).	864	An adjustable reading light.
830	A rush seated rocking chair.	865	A box of miscellaneous to include: a chess set, Typhoo 'Wallace & Gromit' salt and pepper pots, etc.
831	A contemporary oval coffee table with a glass top, 26" x 19 1/2" x 20".	866	A box of art supplies to include: oil pastels, paint brushes, paper, etc.
832	Four 'Ercol' dinning chairs	867	A pine pedestal breakfast table, 40" diameter x 30" high.
		868	A box of Star wars Lego, etc.
		869	A Hostess trolley, 29" x 15" x 28".

- 870 A quantity of dice games, etc.
 871 A 'Brother' printer with a quantity of ink, an 'Epson' photo printer etc.
 872 A painted pine dressing table, one drawer without handle, 54" x 17" x 29 1/2".
 873 A hall stand, 6' x 20" x 20".
 874 A 'Garmin' Sat Nav, a 'Orskay' Dash Cam, etc.
 875 A pine bookshelf, 24" x 12" x 3'.

Saturday 9th August 9am

MISCELLANEA

- 1001 A Napoleon style desk lamp, 19" tall, (requires re-wiring).
 1002 Ten copper and brass powder flasks in a display box being 19 1/2" x 18".
 1003 An 'Armand Marseille' German porcelain headed Doll, marked No. 390 to rear of head.
 1004 A quantity of treen to include: a carved figure of a traveller 12" high, turned bowls, hardwood elephant, etc.
 1005 A marquetry decorated Jewellery Box and a tea Caddy, 9" x 6" x 4" approx.
 1006 A box of treen to include: various boxes, candlesticks, a circular lightwood box lined with metal having a 18th century scene to the front, a pair of carved clogs, etc.
 1007 A domed 'Kundo' anniversary clock and a 'Smiths' carriage clock.
 1008 Ten "pewter" pin badges of animals, approx. 2" long to include: sausage dog, horse, hare, dolphins, etc.
 1009 A miniature cast iron potbelly stove 8" high, a doorstop, a large footed candle holder and a painted brass owl, etc.
 1010 A box of vintage personal miscellaneous to include: a boxed breast extractor, two pairs of hair clippers, a miniature tin of 'face powder refill', a tin of razor oil, a razor torch light, scissors, Stratton compact, etc.
 1011 A quantity of miscellanea to include: vintage tins including Oxo, Coleman's, a horn beaker, hand-painted chest of drawers, slate barometer, etc.
 1012 A box of miscellaneous to include: a circular dried flower arrangement in domed case, a framed 'Logs to Burn' poem, a vintage leather holder with a Post Office savings money box, a leather pocket coin wallet, a leather trinket box, etc.
 1013 A box of cigarette card albums featuring animals, Kings and Queens, film stars, etc. a hard-backed album with cards of Dickens Characters, etc. together with a tin of boxed sets incl. Wild Woodbine, etc.

- 1014 A quantity of souvenir black and white booklets and picture booklets mainly France to include: 'Chateaux de la Loire' images, 'Versailles' Album Artistique, etc.
 1015 A pair of C.P. Goerz Berlin military Binoculars and another 8 x 25.
 1016 An art deco style Mantle ornament in the form of three deer, on marble base, 15" wide x 6 1/2" high.
 1017 Two heavy pressed glass lampshades, 8 1/2" tall x 11" diameter. ***
 1018 A brass desk weight and a heavy slate candle holder being part of a Clock garniture and a model of a horse's head.
 1019 A Viewmaster complete with slides and a vintage Marx "Little Hostess" dining table and sideboard.
 1020 Four Generation brass penny whistles.
 1021 A GWR black metal box (handle to top missing), 16 1/4" x 6 1/2" x 7 1/2".
 1022 A wooden box containing wood-carving Chisels.
 1023 A small chest of five drawers, 10" wide x 5 1/2" x 12 1/2" high.
 1024 A Brass and wood ship's wheel, stamped H.L.D. 43674, 30 1/2" diameter.
 1025 A 1970's Italian mirror by Calligaris with bubbles design, 38" long x 20" high.
 1026 A bronze pestle and mortar, 6 3/4" diameter x 3 1/2" high.
 1027 A 1930's hat box.
 1028 A box of assorted Hornby trains and coaches to include: Midlands Cross Country boxed set, First Great Western boxed set, etc. plus two bundles of track.
 1029 A French bible presented to John Crellin Isle of Man/New Brighton, two paperweights, a Prinknash vase, a picture of the Houses of Parliament, a Canon EO5 350D camera with Tamron AF,XR Di LD 28-300mm f3.5-6.3 lens, and a leather Rabone Chesterman Ltd tape measure.
 1030 A Victorian hand-embroidered Tablecloth with coats of arms and applied foliage, flora and berries, 82" x 84" approx. together with a booklet of the history of the cloth and the coats of arms. ****
 1031 A marquetry mercury Banjo Barometer.
 1032 An ornate gilt framed, bevelled Mirror, 30 1/4" high x 21" wide (some damage to pediment).
 1033 A Basque Makila walking stick and a wooden walking stick with composite bulldog head knob, etc.
 1034 A red painted coopered barrel decorated with Royal Coat of Arms. ****

1035	A vintage 'Haspe' Slide Projector with a quantity of 35mm and medium format slides including slides from Hereford, Europe and Canada, etc.	1054	A 20th century vintage His Master's Voice leather album with twelve 78 rpm. records of Gilbert and Sullivan - The Gondoliers by Direction of D'Oyly Carte Orchestra with popular songs e.g. Take a Pair of Sparkling eye, etc. the album originally containing church choir music.
1036	Two 75cl bottles of Vintage Port from a private cellar - Warres 1986 and Gould Campbell 1977.	1055	A quantity of loose used vintage stamps including African, European, Commonwealth and others.
1037	A quantity of Ordnance Survey Landranger maps to include: Minehead, Salisbury Plain, Gloucester, etc.	1056	A composite model of a reclining Lion on plinth in the style of Canova, (label to underside), 13" long.
1038	A hardback book, titled 'Rawhide' 1959.	1057	A wall hanging treen salt box, 11" tall, a circular mixed woods chopping board, 12" diameter, a carved plate, a rectangular box and a leather covered box embossed with animals.
1039	A first edition hardback book, entitled 'Marching on' by Percy U. Bradshaw, 1943.	1058	A large late 19th century Holy Bible with approx. twenty four coloured plates, 13" x 10".
1040	An early 19th century small Kashmir copper water vessel, 3 3/4" diameter x 3" high.	1059	A late 19th century coopered well bucket with iron bands, 25" tall.
1041	A 1970's Tonka yellow car transporter.	1060	An early 20th century child's bentwood chair with three turned spindles and upholstered tapestry seat, 24" tall, plus another with a woven seat.
1042	A replica WWI set of miniature medals and ribbons, mounted on bar.	1061	A 19th century woolwork Sampler of a farmhouse with a farmer, trees, shrubs, black and white cows and a well, 24" x 17".
1043	Two folders of first day covers to include: Christmas 1991, Charles Dickens, Commonwealth 1984, Isle of Man 1979, etc, plus stamp albums with British and Foreign stamps, etc.	1062	A 20th century Mahogany three tier folding cakestand, 33" tall.
1044	A vintage travel iron and a vintage Cash's Royal Charles and Diana Royal Wedding 1981 bookmark.	1063	A Print of Robert Morden map of Hampshire and parts of the surrounding counties, 15" x 13" including frame.
1045	A 19th century mother of pearl fruit knife, Sheffield blade 2" long, another with coloured handle, a ladies glove hook with pearl handle and a bodkin with pearl handle.	1064	An early 20th century brass and copper Oil Lamp standing on fluted column with glass chimney and etched frosted globe, (globe shade of lamp chipped) 24" tall, plus a 19th century spelter figure of a young girl with harvesting rake on wooden plinth, 15" tall.
1046	A heavy bronze figure of a Shih Tzu dog, 6" long.	1065	An Oriental silk on silk wall hanging of temples, prunus, etc, 23" x 10", and an Oriental shades of red and black lacquered wall Picture of a vase of bamboo with perching bird, 24" x 12".
1047	A cast brass/bronze bell of some age with mythical beasts and inscription, 5" tall x 4" diameter, plus a similar bell also with moulded inscription, 5" tall x 3 1/4" diameter, plus a brass claw bell.	1066	A brass ship's wheel nut crackers, a pair of chrome and wood vintage candlesticks, 8" tall, and an ornate metal easel book stand, 12" tall.
1048	A brass sundial with moulded inscription 'I Mark the Bright Hours', 5 1/4" diameter.	1067	A large, ornate Italian blue tray, 19" long, two Cloisonne ashtrays and a 19th century papier mache gilt and black lidded jar.
1049	A Baroque style caged glass square Apothecary jar and lid, 7" tall x 5" wide.		
1050	A hand painted religious Icon depicting Madonna and Child, of considerable age, with cloth cover to preserve wood, 5 1/2" x 7".		
1051	An early 20th century Tantalus mounted in silver plate with three spirally fluted square glass decanters and stoppers with lock and key (slight damage to one decanter), 14" long.		
1052	A stained wood 19th century walking Cane with original brass ferule, 33" long.		
1053	Two oval silhouettes in black frames, 10" x 7", plus a late 18th century engraving of the ruins of Sherbourne Castle Dorset, 9" x 7" and another of Portland Castle published 1786 by S. Hooper.		

1068	A Rudyard Kipling volume - 'Plain Tales from The Hills' , a 1923 edition, published by MacMillan in a splendid red Moroccan gilt tooled leather, 4 1/2" x 7".	1091	A WWI iron shell case, dated 1/4/16 having an unusual copper band, (origin unknown but having identification marks visible), 9" high together with a pair of African tribal spear heads, 17 1/2" long.
1069	A late 19th century/early 20th century two colour Art Nouveau rectangular wall Mirror with carved treen swags and flower heads and pink glass pediment, 22" x 15".	1092	A Sheltone Ukulele, approx 20" long, cased.
1070	A very heavy cast brass precision Compass stamped 'Nauticalia' in a leather case, plus a an Oriental compass with silvered dial and calligraphy markings.	1093	A small collection of laboratory glassware to include: ground glass stoppers, a size reducer, flasks, funnels with tap, etc.
1071	A composite bust of a young girl, 16" tall.	1094	A circular brass Salters spring balance scales, circa 19th century.
1072	A metal "English Electric Company" plaque by Williams Works, Rugby, 11 1/2" diameter.	1095	A box of vintage train miscellaneous to include Hornby, etc.
1073	A brass and iron ship's wheel, serial No 21509, 22" diameter.	1096	A box of miscellanea to include: tray, music box, etc.
1074	A Benin Nigeria tribal figure, 4 1/2" high.	1097	A qty of HO gauge models by Lionel, incl. engines, track and rolling stock.
1075	Seventeen glamour photographs and prints.	1098	A quantity of coral, shells, etc.
1076	A good quantity of mixed slides in boxes, mostly of family holidays, etc.	1099	A contemporary metal sculpture of an Oriental man with a yoke and pails on his shoulders, 11 3/4" tall.
1077	A Tizona sword of El Cid. ****	1100	A contemporary Milton Brook pestle and mortar.
1078	A Henry Potter of Charing Cross, London, Brass and copper Bugle, 11" long.	1101	A copper kettle and two brass miner figures, two part filled Texaco 'Great Regiments' token albums, etc.
1079	A vintage Doctor's case and contents to include: reference books, blood pressure monitor, etc.	1102	An octagonal sewing box with profuse inlaid ivory decoration, with contents, 8 1/2" x 8 1/2" x 4 1/4" high. ****
1080	A quantity of stone ornaments to include: eggs, animals, fish, vintage tiddlywinks, etc.	1103	An antique Portrait Miniature on ivory of a young Regency gentleman, in a rectangular ebonised frame with oval aperture and domed glass having an acorn hanger, 6 1/2" x 5". ****
1081	A 'Francesco' blue Accordion, cased (case as found).	1104	A Victorian Mirror in an arched painted Gesso frame, 17 1/2" x 24" and an Oak veneered overmantle Mirror with a distressed bevelled plate, 17 1/2" x 21 3/4".
1082	A British Leyland clocking-in Clock with two keys (keys in office) by 'The Gledhill-Brook Time Recorders Ltd, 45" high x 15 3/4" wide x 11 3/4" overall.	1105	A quantity of miscellaneous to include a boxed 'Bowman Models' table tennis game, brooches (one being silver), a glass bunch of grapes, brass shell, Disney '101 Dalmations' snow globe, etc.
1083	A metal footed bowl with Moorish style engraved decoration, 8 1/4" diameter x 6" tall.	1106	A quantity of ladies evening gloves and bags to include: two French beaded purses.
1084	A contemporary Enamel "Woodbine Cigarettes" sign, 13" wide x 27" high. ****	1107	Nineteen Brooke Bond, Horniman and Typhoo Tea card Albums along with a quantity of loose cards.
1085	A box of cameras to include: Canon ZB5 sure shot, Kodak fun saver 35, etc.	1108	A quantity of play-worn Matchbox cars with garage, fuel pumps and road signs.
1086	A box of Matchbox "Yesteryears" lorries (all boxed).	1109	A tray of play-worn Corgi and Corgi King cars and trucks, transporter, trailers, etc.
1087	A box of Matchbox "Yesteryears" vehicles (mostly boxed).	1110	A Meiji period papier mache Box decorated with birds.
1088	A pair of finely carved Meerschaum pipes of lady and gent.		
1089	A vintage baby weighing Scales with wicker carrier.		
1090	Four contemporary pale cornflower blue "Maids to Measure" bridesmaid dresses, full length.		

1111	A set of three volumes 1827 - The Secret Correspondence of Madame De Maintenon, London printed for Geo Whittaker, Ave Maria Lane.	1130	A navy Barbour ladies jacket (size 12).
1112	***COLLECTION ONLY***A folding single barrel .410 calibre open hammer Shotgun, serial no. 5421, 25 9/16" long barrel and having a chequered stock, 40 13/16" long overall, 25 3/4" long when folded, cocks and fired normally during cataloguing. ***ALL WEAPONS MUST BE COLLECTED IN PERSON - NO POSTAGE. PLEASE NOTE THAT A CURRENT APPROPRIATE GUN LICENCE WILL BE REQUIRED AND IS TO BE PRODUCED TO THE AUCTIONEERS AT THE TIME OF COLLECTION, WHICH SHOULD BE BY PRIOR ARRANGMENT.	1131	An oval bevelled edge Mirror, a/f., some small marks, 26 3/4" x 16".
1113	A small mantle/bedside clock in a clam shell frame. ****	1132	Two mantel clocks, one being a Smiths 8 day and the other Enfield Bakelite, no key, has pendulum.
1114	A framed Map of Herefordshire 1801, engraved by John Cary, 21" x 24".	1133	A 'Standard' manual sewing machine, (cased a/f.).
1115	A gilt framed oval bevelled Mirror, 29" x 18 1/2".	1134	A 'Grain' miniature sewing machine.
1116	A dressing table mirror with two lower drawers, 29" wide x 30 1/2" high x 7 1/4" deep.	1135	A cased backgammon set.
1117	A Zeiss Ikon Ikonta folding bellows Camera having a Carl Zeiss Jena Tessar 5cm f/4.5 Lens, with original ever ready case, leather outfit case, Petri hot shoe Meter, Accura hot shoe finder, screw in steady handle, hoods and filter etc.	1136	A box of pendants, necklaces, bookmarker's, etc., three Oriental scroll hangings, and two unframed silk pictures of Pekinese dogs.
1118	A B.B. Yeates Family Grocers, Tenbury, stoneware cider Flagon, 13" tall.	1137	Four soapstone undercut ornaments to include, a fish, a rabbit, an egg, etc.
1119	A pair of lined Curtains in gold fabric with pink floral sprays, 97" wide x 60" drop	1138	Two old original AA metal car badges numbered 5E15927 and ON11874
1120	A small quantity of treen to include cigarette case, etc.	1139	A quantity of miscellaneous to include: a Defries Safety lamp, mahogany wall bracket, a shop bell, a musical ceramic lady, etc.
1121	A Panasonic Lumux OMCf28 bridge digital Camera with Leica lens, batteries and charger.	1140	A cut glass light fitting, 'onion' shape, approx. 10" x 10".
1122	Six cameras to include: Fuji film, Sony, Panasonic, Samsung, etc.	1141	A vintage electrolier, five branch, with chain and ceiling fitting.
1123	A John Denman Clarinet with accessories, cased.	1142	A Saxon & Co Brynmawr vintage glass soda syphon, 13" high.
1124	A 'Fundamental Operation' vintage Chinese abacus.	1143	A wooden writing box with brass bound corners and tooled black leather writing slope, 12" x 9" x 5 1/2" (as found).
1125	A mahogany sarcophagus shape tea caddy, 7 1/2" wide x 4 1/2" deep x 5 1/4" high.	1144	A box of vinyl 45rpm and 7" singles from the 1960's, 70's and early 80's to include: Queen, The Rolling Stones, Bruce Springstein, The Beatles, etc.
1126	Three Waterman fountain pens and a Waterman fountain pen & pencil set, (3 cased).	1145	An old Meccano clockwork train set (some parts as found).
1127	An antique miniature carved pipe.	1146	A 1957 Stock Market poster, City of Hereford, a/f.
1128	An old black and white picture of a lady dated 1905, a carriage lamp and a pair of Leonardo 'Tiger' and 'Leopard' busts.	1147	A box of smoking related items to include: a Players ashtray, a 1940's cigarette case, Tom Thumb's cigarettes, etc. a set square, old leather purses, wallets and coin purse, a box of three gentlemen's clothes brushes, etc.
1129	An Olympus Camedia digital Camera C4000 Zoom in carrying case.	1148	A qty of Cokin Photographic Filters inc. Close-up +3, COEF. X 1,5 Warm (81C), Radial Zoom, COEF. +3 Sepia, Pre Shaped Frame, Close-up +3 (P103), Linear Polarizing (P160), Cokin Filter Holder with dark slide and 52mm adaptor ring together with a Metz SCA 311 dedicated module for Canon Cameras for use with the Metz SCA 300 series of flashguns.

1149	A Mamiya RB 67 Pro S medium format reflex Camera, no. C180162, together with a Mamiya Sekor C 90mm f/3.8 Lens, no. 108810, a Mamiya Sekor C 180mm f/4.5 Lens, No. 45246, with rubber lens hood and back and lens cap, 120 roll film back, no. 265941 and waist level finder.	1169	An original game 'Get Rid of Huns The Great European War Game' published by R Farmer & Sons in 1916, a biscuit tin with spinning top travel wager, and a lace card of 'Mrs Caudle's Curtain Lecture'.
1150	A rare Mullard Type E-7600/4 high speed Valve Tester with 41 switch position program cards.	1170	An Italian terracotta figure of the Madonna, probably early 19th century, with traces of polychrome, 30.5cm.
1151	A Circa 1950's Surveyors Theodolite made by Watts of London with part of original case.	1171	A 19th century copper maritime Ship's Lamp, starboard, complete with original interior oil lamp and blue lens, 15" tall.
1152	A graduated set of three treen Elephant table lamps.	1172	Sewing interest, A varied collection of carved bone sewing implements, including reels, clamps, bodkin cases, spools, a tatting sheaf, a thimble case, and a pair of knitting needle sheafs.
1153	A Westminster chiming mantle Clock, marked 'Andrew' to top of face, with key, and a plastic cased lightweight anniversary clock.	1173	An interesting Japanese patinated bronze vase, mid century, Art Deco style cloud decoration, signed underneath in Japanese script, 24cm.
1154	A bevel edged wall mirror, 29" x 19".	1174	A Japanese hardwood mask netsuke or okimono, Meiji, in the form of a jovial man, 9cm, inscribed characters to the reverse, and a Satsuma plaque or buckle painted with two geishas, white metal mounts.
1155	A red file stockbook of English Mint stamps together with a blue stockbook of mainly English used stamps.	1175	An early Asian carved hardwood figure, Indian of possibly Nepal, 18th century or earlier, 22.5cm.
1156	Four albums of First Day covers to include the late 60's, early 70's, 70's and early 80's , and 84 year and and 85 year.	1176	A black lacquered Chinoiserie Table having a shaped lid, profusely decorated in gold with illustrations of oriental life with lakeside pavilions, foliage, flowers and numerous figures going about their daily routines, the lid reveals an interior with similar but more restrained decoration and various compartments, many with lids, the whole standing on two fretworked supports united by a lower stretcher, the base formed by stylised paw feet, (the lid is currently detached), 22 1/2" x 15 1/2" x 27 high approx.
1157	A large, original f G.W.R 'The Wye Valley' framed Poster, overall 55" x 45" including the frame. ****	1177	A Chinese bronze cylinder vase or large brush pot, 19th century, heavily cast with a phoenix in a tree, 23.5cm.
1158	A box of loose stamps and papers from old album.	1178	A rare miniature enamel on silver stand, finely painted, 1 1/2 tall. ****
1159	Two vintage stamp albums to include: many Victorian and Edwardian stamps.	1179	A Chinese small carnelian Bowl with applied silver motifs, signed on base, 2" diameter x 1 3/4" tall.
1160	A vintage silver plated boxed set of six pasty forks, a vintage thermometer, barometer and barometer set in vintage wheel nut.	1180	A Chinese opium pipe with amber bowl and applied decorations.
1161	A set of four antique paste Buttons in spiral design. ****	1182	A cast iron Cow doorstep, 12" long x 10" high.
1162	A salt glazed Lord Brougham Reform Cordial Flask, a Wade Bells Whisky decanter (empty), and an Italian Comical Car decanter set in blue glass.	1183	A mantel Clock with Arabic numbers, key present.
1163	A very large lined Laura Ashley fabric single Curtain/divider in terracotta with all over cream pattern, 240" wide x 82" drop approximately.		
1164	A gentleman's dressing gown in grey tweed with dark pink lining, cuffs and collar.		
1165	A pair of large country house style Curtains, 230cm drop x 196cm wide.		
1166	A special Operations Wing 39th "Night wings for Peace" medallion.		
1167	A Turkish silver Hammam bowl, Kurdish, mid 20th century, used in traditional baths, stamped 900, 6" x 5" x 1 1/2" deep.		
1168	Two Native American/Canadian First Nation Pearlite totem Poles, one of large size, 34.5cm and a similar woven basket.		

1184	A Canon EOS 850 Camera c/w flash and carrying case plus two 35mm 200 colour films, a pair of Opticron Binoculars in case 10 x 42 bak 4 prism fully multi coated. ****	1203	A pair of small mirrors in decorative frames painted with a blue tit and a kingfisher, plus a papier mache bowl (chipped).
1185	A quantity of miscellaneous including two Canon calculators , Commemorative jigsaw puzzle, metal model of the Golden Hind, a stone dolphin etc.	1204	A wooden framed compensated Barometer with barley twist pillars to either side, for A.Wernet Ltd. of Newport, 13 1/2" wide x 10 1/2" high, glass cracked.
1186	A quantity of miscellanea to include a large glass fishing float, flat iron, shoe last, a 1941 brass shell case, keys, etc.	1205	A Davy/Miner's lamp by E Thomas & Williams Ltd. of Aberdare.
1187	A quantity of miscellanea including two framed Oriental embroidered pictures, beaded chandelier, pressed flower picture, bookends, tie press, etc.	1206	A pair of carved wooden tribal ceremonial Paddles, 62" long approx.
1188	A small quantity of fur items to include collars, shawls, etc.	1207	A Railway lantern with red glass lens
1189	A Mahogany Gentleman's Vanity Box containing five cut throat razors, inscribed "E Thompson" to brass plate on the lid, 12" wide x 9" deep x 5" high.	1208	A jewellery Box having central inlaid decoration to lid and stringing, the box lined with green silk (as found) 11 1/2" x 6 1/2" x 3 1/2" high, together with a circular wooden and brass wall barometer.
1190	A Ladies brown fur coat [some damage to collar]	1209	Two framed oriental embroideries on silk including one with figures in a garden, the other with birds and blossoms.
1191	A quantity of treen to include bowls, platters, turned lamp base, bookends, darning mushroom, etc.	1210	A quantity of miscellanea including cased pair of Sotem 7 x 50 binoculars, Cloisonne duck pot, blotter, old keys and blue glass and metal perfume/smelling salts bottle.
1192	A vintage fur cross-over front bolero.	1211	A quantity of ballpoint pens including cased Sheaffer, loose Parker pens plus a cased Parker fountain pen.
1193	A quantity of pottery fragments, clay pipes, fossils, shell, etc.	1212	A Robert Morden Map of Nottinghamshire, 17 1/2" x 15".
1194	A small quantity of kitchenalia to include bread boards, butter pats, "Thorne's" assorted toffee tin, miniature wine cooler, etc.	1213	A Coopers Croze Hawksbill or Compass crane for making the deep grooves to each end of a barrel to fit the lids and bottom snugly.
1195	A quantity of hats to include a Simon Fairfax wax hat, Kaminski Raffia hat, etc.	1214	A brass ship's bell.
1196	A contemporary Abstract multi-paneled green stained glass Mirror, 24" tall x 11 1/4".	1215	A WWII Military Officers folding Campaign Chair stamped E Atkins Ltd 1937, stenciled name G A Goodman 100572
1197	An ornate gilt plaster framed Mirror, 20" wide x 25" tall.	1216	A Mahogany shelf/display unit having a profusely leaf scroll carved door to one side and a shaped upstand, 26 3/8" wide x 7" deep x 26 3/4" high approx.
1198	A collection of cigarette cards in an album to include: Wills, Hignetts etc.	1217	A Sanderson Junior 1910 folding plate camera with Koitos lens (as found).
1199	A Framed set of cigarette cards to include: Association Footballers.	1218	A late 19th C mahogany frame fire screen inset with Silk on Silk tapestry [good condition], 23 1/4" wide x 34".
1200	A vintage wooden 'Adsit' cash drawer, the lid opens to reveal six coin pots and three note holders plus a bell (the drawer is locked and no key present).	1219	A gyro-Hittite figurine of typical form C 2,300-1600 Bce in excavated condition, professionally restored, Turkish/Syrian border, 6" tall.
1201	Two wool blankets, one 'Tweedmill' Made in Wales, in cream, green, terracotta and burgundy, 5' 3" x 6' 10", and the other is grey, blue, green and burgundy, 4' 11" x 6' 6".	1220	An ancient Greek Alabastron, Corinth circa 600 B.C.E. in excellent original condition in view of its fragility and extreme antiquity, 3 1/2" tall.
1202	A box of miscellaneous to include: a pair of brass elephants, 5 1/2" long, an ostrich egg with elephant images, a large elephant stone ashtray and treen elephants, etc.		

1221	A tray of small fossils, shells, etc. to include: brain corals, oyster shell fossil, fossil wood section, red onyx pendant, etc, plus a selection of stone eggs, of various colours and sizes, small box of specimen quartz and pyrite and a number of small fossils including tiny snails and Bivalves.	1242	Two machine made textured Throws with jungle and tiger and the other Stag and doe scenes and a patterned large table cover, (some holes).
1222	A Moroccan warming kettle and a rosewood box with mother of pearl inlay (no key).	1243	An oak framed picture of people in church in Traditional Welsh dress, 29" x 32". **
1223	A black bowler hat (size 7) by Superior Style.	1244	A large bevel edge wall mirror with ebonised and gilt frame, 31" x 43".
1224	A Mahogany towel rail having twist supports, 27" wide x 34 1/2" high.	1245	A Victorian swing Mirror, 16" wide x 20" tall x 8" deep.
1225	A framed and signed 2015 Welsh Rugby jersey, the frame 28 1/4" x 39 1/2".	1246	A 19th century Oak 'X' frame stool with flat cane seat.
1226	Three boxes of Chinese combs and Beijing 2008 Olympics pfical coin in presentation box.	1247	A faux fur jacket medium sized, Made in England.
1227	A limed wood effect Standard Lamp and shade, the column being fluted.	1248	A Maxwell Croft Limited fur jacket (some moulting).
1228	A metal shop scales and weights.	1249	A good quality Brass and bevelled glass cased Mantle Clock, the movement having a S Martie et Cie, Medaile de Bronze stamp and a mercury temperature-compensating pendulum, and striking on a bell, the winding key is present but the suspension spring for the pendulum requires replacing, the white face with Roman numerals has the anchor escapement visible, 6 1/8" wide x 10 3/8" tall x 5 1/8" deep.
1229	A small quantity of miscellanea incluindg loose English & foreign stamps, treen screw top bottle, pair of cufflinks, novelty alarm clock, etc.	1250	A cased Panasonic Lumix DMC-LX3 Compact Digital Camera in black having a Leica DC Vario-Summicon f/2-2.8/5.1-12.8 Zoom Lens, with battery, hand strap and lens cap.
1231	A 30 hour long-case clock mechanism having a square painted face with Roman hour numerals and Arabic minute numerals, maker, Pugh, Newtown.	1251	A Panasonic Lumix DMC-TZ40 GPS Compact Digital Camera having a Leica DC Vario-Elmar f/3.3-6.4/4.3-86 Zoom Lens, with strap. Screen Damaged - Sold as seen.
1232	A painted enamel Longcase Clock face and mechanism, hand-painted with sea shells and landscape scenes and marked Richard Webb, Brecon. ****	1254	A Queen Victoria silver 1890 Crown.
1233	Two Wade porcelain Bell's old scotch Whisky Decanters and contents to commemorate the birth of Princess Eugenie, boxed.	1255	A tin tea tin of Foreign and Commonwealth coinage to include: Costa Rica, Ascension Islands, Turkey, etc.
1234	Six vintage strapped hammers.	1256	Six Charles and Diana 1981 Wedding crowns, five Queen Elizabeth Silver Jubilee crowns 1977 and two 1998 The Princes Trust five pound coins to celebrate 50th birthday of Prince Charles.
1235	Three walking canes (one having silver knop, another having scene of tigers and elephants in the jungle, and another).	1257	A George III halfpenny dated 1806, two Battle of Britain 50 pence pieces, old coinage pennies, farthings, a quantity of sixpences, etc. and quantity of foreign coins.
1236	Two framed Maps - one of Suffolk showing all the Railways and names of stations, the other of Hampshire.	1258	A large quantity of foreign bank Notes to include Australia, Belize, Yuan China, St. Helena, etc. (used condition).
1237	A rectangular bevel edge mirror in ebonised and gilt frame, 14 1/2" x 24 3/4".		
1238	A circular convex mirror with urn and swags pediment, 15 1/2" wide x 25" high.		
1239	An oval brass tray with scallop edge, embossed with heart and flower motifs, 26" x 17".		
1240	A pair of red floral on cream ground curtains, 85" wide x 57" drop.		
1241	A child's Rocking horse, 4' long x 40" high x 21" wide.		

- 1259 A quantity of English Bank Notes including £1 notes from The Isle of Man, Jersey and Guernsey y "Northern Bank Limited", an Ulster bank £5 notes and an old Bank of England £1 note - N63k 067670, a 10/- note and a £5 note, plus various postage stamps.
- 1261 A large red and navy blue floral signed Persian Rug, 55" x 90".
- 1262 A small blue bordered and patterned Rug with gold centre and goat motif to corners, 3' x 2'.
- 1263 A geometric pattern, bordered, patterned and fringed Kilim rug in pastel shades, 42" x 76".
- 1264 A Kilim runner in green, red and ochre, 6'6" long x 24" wide.
- 1265 A long bordered, patterned and fringed hall Runner in terracotta and blue, 15' long x 35 1/2" wide.
- 1266 A bordered, patterned and fringed Rug with multi-coloured geometric pattern, 109" x 60" (some fading to one corner).
- 1267 A geometric pattern Kilim Cover for a table or bench, 41" long x 13" wide and 19" depth, along with a geometric pattern carpet saddle bag.
- 1268 A bordered, patterned and fringed woven Rug with geometric pattern in red, orange and blues, 47" x 57".
- 1269 A bordered, patterned and fringed Kilim rug with stylised animal motifs in polychrome colours, 49 1/2" x 72" long.
- 1270 A bordered, patterned and fringed Kilim Rug, burgundy ground with chocolate zig-zag border, 51" square.
- 1276 A box of Studio Pottery to include: brown slipware tankard, treacle glaze vase, stoneware three opening rectangular vase marked 'Chekayoff' to base, twelve miniature owl figures, etc.
- 1277 A box of china to include: Coalport and Wade figurines and miniature items plus a Wade tortoises, hand painted blue Delft cow, etc, and a poodle marked to base Sylvie Cheval Place, London 73, etc.
- 1278 A box of china to include: Portmeirion 'Pomona' and Royal Worcester 'Evesham' china, plus a Poole Pottery 'Vineyard' fruit/salad bowl.
- 1279 A quantity of china to include: two 'Bombay Japan' pattern plates with central vase and floral decoration, an Imari style lidded pitcher with an Oriental scene, 9" high, a small porcelain jug with Cantonese scene, plus an Oriental footed vase with floral decoration. 12" high, etc.
- 1280 A Border Fine Arts Studio figure of "Flying Peregrine Falcon", 13" tall.
- 1281 A Border Fine Arts English Springer Spaniel on base 8 3/4" tall.
- 1282 Two Meissen birds bullfinch a/f and a blue and white 'onion' pattern dish [hairline crack].
- 1283 A large Bisque/Parian ware centrepiece of two female figures by a basket, 12" tall.
- 1284 A large blue and white hand painted Vase, 24" tall..
- 1285 A Grindley 1930's hand-painted, art deco style part Teaset for four people.
- 1286 A Spode fine stoneware "Spode's Gloucester" three piece Teaset.

PORCELAIN & CHINA

- 1271 A box of novelty cruet and salt and pepper set.
- 1272 A set of ten Beswick 'Cat Jazz Band' figures.
- 1273 A box of blue and white willow pattern tea and dinner ware, to include: 'Johnson's jug, 6" tall, two oval plates, 'Swinbertons' lidded tureen, 'The Ferry' cake plate, 'Myott' teapot, 6" high, two 'Olde Alton ware lidded tureens, plus 'Churchill' 'Windsor, etc. together with Delft charger 15" diameter.
- 1274 Six pieces of Poole Pottery with hand painted floral decoration to include: vases, lidded pot and saucer.
- 1275 A box of miscellaneous china to include: Souvenir ware lattice plate for Queen Mary and King George, Crest ware hot water jug, Sadler piggy bank, Coalport posies, etc.
- 1287 A vintage Chinese hand painted rotating appetiser, a Chinese square turquoise vase and blue white/red vase
- 1288 A Mabel Leigh, Shorter and Son 1950's "Khimara" bowl, 10" diameter.
- 1289 A set of three graduated hand-painted old Phoenician flying duck wall plaques (a/f), three Border Fine Arts "Flower Fairies", a Beswick rabbit and baby and a Nao duck.
- 1290 A quantity of china to include a Janet Harner Studio pottery duck bowl, two Fortnum and Mason preserve pots, a pair of Capo-di-monte lamps, Belleek teapot [no lid] etc.
- 1291 Two Studio Pottery signed Tygs.
- 1292 Five Wedgwood calendar plates.
- 1293 A brown Wedgwood 'Stirling' coffee service to include: coffee pot, six cups and saucers, etc.
- 1294 A Studio pottery punch bowl and six goblets.
- 1295 An Italian porcelain soup tureen and stand with applied floral decoration.

1296	Twelve Flower of America Wilderness display plates by Franklin Porcelain.	1313	Two elephant candy stripe stem Vases (one as found), two Oriental dishes and a Pearce & Sons dish.
1297	A Capo-di-monte figure of a drunken tramp, 8 1/2" high.	1314	A 'USSR' zebra 3" tall x 3 1/2" long.
1298	A Capo-di-monte figure of an artist at work, 10 3/4" high.	1315	A small quantity of china to include: Royal Worcester hunting cup and saucer, Ironstone cup and saucer, an Art Nouveau vase, a glass paperweight, etc.
1299	A quantity of Wedgwood 'Cane' dinner ware, plus lustre dressing table set, etc.		
1300	A large, colourful Studio Pottery plate with abstract design in blue, cream, green and russet colours, 17" diameter.	1316	A Moorcroft Lise B Hereford apple with Hereford bull commissioned in 2015, only three made, cast from a Hereford apple decorated with Hereford bulls in lustre overglaze, 3" x 3".
1301	A Royal Doulton teapot 'Polly Put the Kettle on' with blue and orange Phoenix design, 8" diameter x 4 1/4" high, a Royal Doulton stoneware harvest jug with lid, a pair of glass Art Nouveau vases (one with chipped rim) and a Zeller Rooster and Hen teapot.	1317	A large antique 'frog' mug (some losses), 6 1/2" high.
		1318	A large Aynsley punch/fruit bowl with pink rose decoration and gilt rim (some fading).
1302	A quantity of china including Laugharne Pottery goblets (one a/f), pair of French duck pate lidded dishes, two Japanese porcelain dishes and a set of six Wedgwood Imperial Porcelain 'Peaches' design dessert plates and matching serving dish.	1319	A quantity of trinket Pots, some being musical to include: Heirloom porcelain 'Close At Heart' by Sandra Kuck, and Heirloom porcelain 'My Sister My Friend' by Sandra Kuck, etc. an Aynsley fine English bone china 'Pembroke' tray, a Prinknash Pottery Commemoration trinket box, along with two Oriental style small blue vases, etc.
1303	A quantity of Royal Copenhagen 'Green Melody' dinner ware.		
1304	A good quantity of Noritake 'Basket of Flower' tea and coffee ware, (some fading and chips).	1320	A Royal Doulton plate H.R.H The Princess of Wales Limited Edition No 679, and a quantity of Bradex display plates to include a set of six 'The Love Sonnets of William Shakespeare', Thou Art Too Dear for my Possessing' second issue No 01388, etc. along with a six plate display stands for William Shakespeare Sonnets Collection.
1305	A Royal Doulton 'Tumbling Leaves' coffee service for six (one cup as found).		
1306	A quantity of part teasets to include: Royal Crown Derby 'Derby Posies', Allertons 'Old English', etc. plus a grey and gold ringed coffee service, (one cup as found).	1321	A box of studio pottery items including contemporary vase/ spill vase, treacle glaze etc.
1307	A quantity of china to include: Royal Worcester, Wedgwood, Aynsley, Oriental etc, bud vases, trinket dishes, trio, etc, (some as found).	1322	A quantity of Royal Worcester to include: three serving plates, a tart dish, two pie dishes, a serving dish, three ramekins, etc. (some fading).
1308	A quantity of china to include: two Thun continental lidded serving dishes, Royal Worcester 'Evesham Vale' side plates, Imari style tea pot and stand, floral cheese dish and cover, etc.	1323	A quantity of china to include: Hornsea flower troughs, Sylvac relish pot, Studio part tea set, etc, plus a cut glass vase.
1309	Two part Oriental tea sets, Doulton 'Old Leeds Sprays' jug, floral jug with staple repair, etc.	1324	A Manor Limited Edition Marilyn Monroe figurine.
1310	A quantity of Royal Doulton 'Provençal' dinner ware to include: soup coups, breakfast and dinner plates, etc.	1325	An End of Day glass basket, a ginger jar, Oriental plates, cup and saucer, etc.
1311	A quantity of Denby dinner ware including dinner and side plates and stands and cruet, in the old stoneware Mustard pattern.	1326	A quantity of Royal Worcester 'Evesham' china to include: cups and saucers, tea plates, egg coddlers, etc.
1312	A Denby Teaset for six people including tea and water pot and milk jug, in the Ode Mustard pattern.	1327	Two vintage teapots including one with a chicken pattern by Emma Bridgewater, plus a 19th century glazed stoneware jug with traditional sprigged decoration, and a modern copy of a 16th century Maiolica pharmacy jar (as found).

1328	Eight Wade Nursery rhyme "Tinker, Taylor " figures together with four Wade" Noddy and friends" figures.	1344	A set of six Copeland and Garrett display plates, hand painted with Scottish loch landscapes and bordered with pale yellow and gilt detail.
1329	A Cranston pottery bottle shape vase with stylised fruit and foliage to rim on mottled ground, 11" tall.	1345	Four items of Copeland and Garrett to include: a Royal Stuart tartan shaving dish, plus two other shaving dishes, one being mosaic, together with a mosaic pattern jug.
1330	Two salt glaze stoneware jugs with sprigged mould decoration, 7 1/2".	1346	A Copeland and Garrett blue and white marble effect bowl and two jugs (some chips).
1331	A small quantity of mostly 19th century china to include: a relief moulded stoneware 'Apostle' jug by Charles Meigh (as found), a French creamware plate 'Le Soldat France', crested souvenir vase and tray, lusterware jug with scene of 'Faith' (repaired)	1347	A quantity of Copeland and Garrett 'Waterloo Napoleonic War' china to include: a green and white 'British Troops Forging Elsa' meat plate, a brown and white 'Decisive Charge at Waterloo' warming dish (repaired), a 'Retreat from Waterloo' soup plate, some from the Robert Garrett Collection.
1332	Two boxes of Hornsea Fleur items to include: tea and dinner ware, etc.	1348	A quantity of Copeland and Garrett late Spode to include: two Peacock and Parsley plates, orange chrysanthemum pattern plates, an oblong pattern dish, and a jug, a green and blue strainer, etc.
1333	A good quantity of Royal Worcester 'Evesham' tea sets, plates, etc.	1349	A quantity of plates and dishes by Copeland and Garrett to include: New Fayence brown chrysanthemum food warmer dish, two Italian Garden plates, Virginia water July dish, from the Robert Garrett Collection, floral shaped bowl, etc.
1334	Four Carlton ware Guinness ornaments to include: Tortoise, penguin, sea lion and saluting man.	1350	A quantity of black and white and brown and white Copeland and Garrett to include: three 'Rhode' tea plates 'Yanina' oblong dish, 'The Statice' dinner plate, pansy lidded dish and a Copeland late Spode plates, etc.
1335	Three Portmeirion Greek Key storage jars, one without lid (some crazing).	1351	A quantity of Copeland and Garrett 'bat' printed items with deer, floral and landscape scenes, with gilt rims, together with floral monochrome items to include: jugs, plates, etc.
1336	A quantity of Toby jugs and figures to include: Doulton 'Bumble', Royal Worcester, Lilliput Lane 'Orchard Cottage', etc.	1352	A quantity of plates and serving dishes detailed with hand painted birds and ornate gilt borders to include: a Spode and Copeland Felspar porcelain blue serving plate, a Copeland and Garrett cream serving dish, and two cream 'bat' printed serving dishes.
1337	A small quantity of china and glass to include: Wedgwood 'Queensware' trio and black matt jug and sucrier, Sylvac string dispenser, Grindley blue and white soup coups, Bristol blue glass weighted Masonic goblet, etc.	1353	Four Copeland and Garrett hand painted plates, two of which are in turquoise with landscape scenes of Goodrich Castle and Fort Rouge, Calais, two in green of Lake of Thun, Lake of Lugano, and a pink serving dish of Loch Awe.
1338	A set of six Meakin's 'Birds of America' plates with embossed floral rims, plus two miscellaneous plates.		
1339	A set of nine Copeland and Garrett plates in cream with ornate gilt detail and three hand painted British landscape scenes to each, from The Robert Garrett Collection (some as found).		
1340	A quantity of Copeland and Garrett jugs to include: a hot water pot with moulded hunting decoration, a treacle glazed Cadogan teapot (repaired) etc.		
1341	Two Scott Brothers twin handles pottery serving dishes with a transfer printed paisley pattern in yellow slip (one cracked, the other chipped).		
1342	Three items by Copeland and Garrett to include: a blue and white rope twist basket, a green and gilt lattice jardiniere and a green and white Majolica vase (chipped).		
1343	A Copeland and Garrett late Spode black basalt dish with hand painted enamel flowers and butterflies (repaired).		

1354	A quantity of Copeland and Garrett hand painted landscape scene china to include: three turquoise plates with scenes of Seven Churches of Clonmacnoise, Richmond Hill, a blue plate with three scenes to include: Bohams Abbey, various cups and saucers including scenes of Tintern Abbey, Loch Doom, etc.	1365	A quantity of Copeland and Garrett blue and white Oriental style china to include: plates, vegetable dishes, jug, soup plates, etc.
1355	A quantity of hand painted floral plates by Copeland and Garrett.	1366	A quantity of Oriental style Copeland and Garrett china to include: footed dishes, plates, etc.
1356	A large quantity of Copeland and Garrett ornately gilded plates and serving dishes to include: a transfer printed 'Rose Camellia' plate with label from the 'David Lyndsay Collection', Spode's 'Imperial' burgundy bowl, etc.	1367	A quantity of Copeland and Garrett china, mainly in Imari colours to include: plates, soup plates, stands, dishes, etc.
1357	A quantity of cream and yellow gilt bordered Copeland and Garrett serving china including an ornate hand painted floral footed bowl, sucrier, oblong dishes etc.	1368	A group of blue and white Copeland and Garrett plates, etc. to include: two 'Bologna' dinner plates, 'Caramanian Castle', 'Common Wolf Trap' side plates, 'Lausanne' stand and a 'Bridge of Lucano. Italy' plate (as found) no makers, etc.
1358	A Copeland late Spode blue and white meat plate together with a Copeland and Garrett polychrome meat plate [repaired]	1369	A quantity of Copeland and Garrett blue and white china to include: 'Spode's Trophies' dinner plate. 'Richmond Hill, Saxon Blue' dinner plate, a three piece matching set and a Copeland 'Spode's Seasons' tea plate, etc.
1359	A quantity of Copeland and Garrett Oriental style dinner and serving ware to include: Four duck egg blue plates decorated with birds and flowers, a bread and butter plate and three tea plates decorated with trees and flowers, a lidded dish and two dinner plates, etc.	1370	A quantity of hand painted Copeland and Garrett plates and dishes to include: a plate with a hand painted vase of flowers, a set of three dishes with green border and a painted with passion flowers and roses, a plate with pansy border, comport with green bubble design border around a painting of a Primula etc.
1360	A quantity of Copeland and Garrett 'Aesop's Fables' in blue and white and green and white to include: 'The Crow and The Pitcher', 'The dog and the Sheep' and 'The Peacock and the Crane' black and white sauce jug.	1371	A collection of cabinet cups and saucers by Copeland and Garrett to include: hand painted, ornate gilding and monochrome, etc.
1361	A collection of Copeland and Garrett china to include: a 'Hydra' jug plus another Greek style jug, a black basalt Egyptian shape creamer, a cream and gilt detailed desk and pen tidy, a candle snuffer in the form of a flower, etc.	1372	A quantity of cabinet cups and saucers by Copeland and Garrett to include: hand painted birds, Imari, green dragons, etc.
1362	A quantity of green and white Copeland and Garrett china to include: 2 oval dishes, 'The Alps' and 'Margate' large plate, wash bowl (as found), etc.	1373	A quantity of mixed china to include: Copeland and Garrett sucrier, hand painted footed bowl, Shelley George V Commemorative mug, etc.
1363	A quantity of Copeland and Garrett green and white to include: an 1846 soup bowl with jockeys and floral border, an 'Italian Gardens' vegetable dish and plate, an oval dish from the 'Worklock Collection' and a floral lidded dish, etc.	1374	A large Chinese Meiping style vase with traces of residual markings, 24" high, (this vase was painted with polyurethane paint, and has just been stripped).
1364	A quantity of floral green and white china from Copeland and Garrett to include: botanical print dishes 'Viper Buglos', 'Tree Mignonette', 'Hellebore', 'Tall Browially', etc.	1375	A Sunderland quart mug of a courting couple.
		1376	A Wedgwood dessert service for eight persons with an urn and flowers detail to the centres having blue/grey borders in laurel wreath style decoration.
		1377	A Herend hand painted porcelain toast rack and a cabinet cup and saucer.
		1378	A quantity of thimbles and pill pots to include: Halcyon Days, Royal Crown Derby, etc.
		1379	A pair of Rye Pottery flatback figures depicting Eastern European gents on horseback.
		1380	A Portmeirion hen on nest.
		1381	A blue and white Oriental ceramic stool, 14 1/2" high.

1382	A Portuguese pottery part coffee set in cream and blue.	1403	A quantity of china to include: Royal Albert 'Kentish Rockery' part tea set with four cups and saucers and seven side plates, Three Royal Albert odd cups and saucers, a set of six gold lustre coffee cups and saucers, coffee pot, etc.
1383	A quantity of china to include: Limoges coffee and tea cups, Royal Grafton coffee cans and saucer, crested ware, Gibson's tankard, oriental stoppered vase, plus a glass bud vase and night light holder.	1404	Four meat plates, one Bristol 'Mandarin' pattern, two polychrome meat plates and a blue and white Copeland 'Asiatic Pheasant' meat plate
1384	A pumpkin shaped lidded Pot and a Studio Pottery large white one handled Vase with textured surface.	1405	A quantity of china to include: a set of four Poole cups and saucers, two Staffordshire serving dishes, two vintage plates one being Tunisian and the other USSR, etc. together with a vintage 1960's Lamas Italy hand painted jug and bowl, plus two ceramic ship vases.
1385	A quantity of china to include: Crown Devon 'Etna' vase and dish, display plates to include: Japanese willow pattern, Gray's pottery, 'Pareek', etc.	1406	A Palissy 'Game Bird Series' part dinner service, (some plates cracked and crazed), plus a copper lustre jug and goblet and two display plate.
1386	A quantity of Commemorative mugs etc. to include: Queen Victoria Diamond Jubilee mug, Edward VIII Coronation mug, Grimwades peace mug, etc.	1407	Three items of Babbacombe pottery to include: jardiniere, a vase and a watering can hand painted by Philip Laureston (vase as found, all with crazing), A box of Royal Tudor ware part tea set by Barker Bros to include: nine cups, eleven saucers and twelve tea plates.
1387	Two Dame Laura Knight Edward VIII Coronation mugs.	1408	Four Lilliput Lane cottages.
1388	A hand painted Hungarian porcelain figure of a peasant woman sitting in a bundle of sticks.	1409	A quantity of Wedgwood 'Pennine' oven to tableware dinner service including dinner and side plates, casseroles, roasting, serving dishes, etc.
1389	A vintage 'Canberra' H.H.G part dinner service.	1410	A quantity of Portmeirion 'Botanic Gardens' to include: cereal bowls, vases, plus polka dot egg cup set, etc.
1390	A Zaphir by Lladro of a boy holding a bird.	1411	A Royal Doulton 'Dennis and Gnasher' character jug and two Royal Doulton 'Desperate Dan' character jugs (one small and one large) all modelled by Simon Ward.
1391	Two small Lladro china geese figurines.	1412	A boxed Royal Doulton model of a springer spaniel.
1392	A Royal Doulton Siamese cat 1882.	1413	A Moorcroft battery operated mantle clock 'Tudor Rose' pattern, 6 1/4" tall.
1393	Five Nao porcelain figurines to include: a Flamenco dancer, girls with puppies, etc.	1414	A pair of Kevin Francis 'Susie Cooper' figurines produced by Peggy Davies Ceramics with Certificate of Authenticity, and a 'Teas with Clarice Cliff' figurine by Kevin Francis, and a Clarice Cliff pace mask by K.F. Ceramics.
1394	Four Nao figurines of clowns to include: Pierrot and girl playing a cello, etc.	1415	Two Kevin Francis figurines, 'Marilyn Monroe' (boxed) and 'Beach Belle' both with Certificate of Authenticity.
1395	A Royal Norfolk 'Old Country Rose' part dinner service, together with a Sadler tea pot 1938, and Royal Winton Grimwades floral plates.	1416	A Doulton Lambeth 'Orchid' vase 13 3/4" tall.
1396	A small quantity of Royal Albert 'Old Country Rose Selection' to include: a frame, a bud vase, etc.		
1397	Three pieces of Denby 'Savannah' china to include: a vase, a jug, an ash tray.		
1398	A Beswick ceramic cat.		
1399	A Doulton 'June' teapot, two Susie Cooper dinner plates (crazed), supper plates, sugar shaker, and a porcelain doll (as found).		
1400	A Lilliput Lane 'Secret Garden' Model, with deeds and booklet, boxed.		
1401	Four porcelain figures of a warrior, sages, etc.		
1402	A quantity of china to include: a Dartmouth Pottery brown cockerel, a pair of ceramic duck bookends, Price Kensington hunting scene teapot, two piece cup and saucer set with sugar bowl and creamer, by Arch, St Ives, plus a six piece coffee service in Poppy design, etc.		

1417	A Royal Worcester blush ivory porcelain flat back pitcher 1094, and a Royal Worcester 'Queen Anne' pattern for Oetzmann & Co, London.	1432	A Sevres saucer by Nicholas Aloncle, dated 1763, painted bird in characteristic landscape, blue and gold ground, LL mark with date letter L, painter's mark N for Aloncle, 13.4cm.
1418	Four Royal Doulton Bunnykins figures, two 'mother Bunnykins', 'Bridesmaid' and 'Seaside'.	1433	An Italian Maiolica pharmacy jar of albarello, Castelli, early 18th century, with a figure of Saint Christopher among distinctive scrollwork, 14cm high.
1419	A small quantity of china to include: a Kevin Francis 'Winston Churchill' character jug, a Royal Doulton 1914-19 Peace mug, souvenir Crested ware, etc.	1434	A North Italian Maiolica apothecary bottle, early 18th century, painted in blue and manganese with animals and birds and a drug label inscribed 'Aq' a D. Viole' (violet water), 25cm high.
1420	A quantity of china to include: a cased Allertons sandwich set, two Wedgwood of Etruria Calendar plates, Falcon ware 'Grecian' Garniture, a pair of Crown Devon vases (as found).	1435	A Peruvian Pre-Columbian blackware effigy jar, Chimu or early Inca culture, 12th-15th century AD, in the form of a maize god with modelled corn cobs and a face on the neck, 18.5cm.
1421	A small quantity of ornaments to include: a Wade 'Betty Boop' and 'Tom' from Tom and Jerry, a Royal Doulton Winnie the Pooh 'Rabbit reads the plan', Royal Albert Beatrix Potter, etc.	1436	A rare Champion's Bristol porcelain coffee cup, circa 1775, with green and gold husk pattern, pseudo Meissen mark, 6cm high.
1422	A quantity if china to include: a Royal Doulton Dickens ware jug (as found), a Belleek jug, a transfer print tankard, Toby Jug, etc. (some as found).	1437	An English porcelain tea bowl and saucer, Liverpool, 18th century attributed to James Pennington, with an unusual shaped rim.
1423	A quantity of figures to include: a Sitzendorf candlestick, a Victoria fairing mantle clock, a Royal Doulton 'Valerie's' etc. (some as found).	1438	A Meissen model of a lady's shoe or slipper, 19th century, of larger size, modelled flowers and painted insects, crossed swords mark, 16cm long.
1424	A 19th century jardiniere stand with floral detail.	1439	A medieval German stoneware jug, Raeren or Siegburg, early 16th century with characteristic pinched foot, 8.5cm high.
1425	A German faience plate, 18th century, probably Kellinghusen, painted with a Chinoiserie scene and distinctive yellow border, 23cm.	1440	A rare English Delftware pickle dish, 18th century, Chinoiserie decoration in blue, 9.5cm.
1426	A Delft small bowl, first half of the 18th century, painted in blue with formal flower heads, 13cm diameter.	1441	A 1930's Bristol Pottery (Pountney's) Teaset in Art Deco style.
1427	A fine English Delftware charger, mid 18th century, painted with geometric pattern in dark blue, 34cm diameter.	1442	A Mexican Puebla mailica punch bowl, mid 20th century, colourful painting in traditional Mexican Talavera style, 34.5cm.
1428	A pair of faience figures of sportsmen with dogs, brightly coloured, 19th century, Hoechst-Damm wheel marks in underglaze blue, 20cm high.	1443	A large spongeware model of a rabbit, possibly Scottish, early 20th century, 19cm long, and a pair of Staffordshire dogs.
1429	A Meissen plaque or tray, circa 1925, painted goose and cornfield in the manner of Arthur Julius Barth (1878-1926), 18cm, crossed swords mark.	1444	An Islamic sgraffito pottery bowl, Byzantine or later, perhaps 11th-14th century, decorated with a falconry scene, 22cm, in excavated condition.
1430	A Leachy Pottery, St Ives bowl, circa 1960's with 'Z' motifs, 22.5cm, a faint potter's stamp (provenance: bought from Geoffrey Godden 1997).	1445	Two early Meissen saucers, circa 1730-40, in the Chinese manner, one with 'celadon' glazed back, 13.6cm and 10cm, crossed swords marks.
1431	A Bullers celadon glazed porcelain stem cup by Agnete Hoy (1914-2000), impressed Bullers mark and potter's initials AH, 10cm high.	1446	A Pearlware figure of a street vender/vegetable seller, early 19th century, probably based on a Meissen 'cris de Paris' original, 13cm.

1447	A Meissen milk jug, circa 1750 with a rococo 'tau' handle, finely painted with Deutsche Blumen, 11cm high, crossed swords mark.	1462	A collection of 19th century Staffordshire nursery ware, transfer-printed comprising of three child's plates, a coffee can and saucer and a toy mug, largest plate just 11.5cm.
1448	A small collection of 19th century pottery pharmacy or chemist's jar, two with covers.	1463	Three tin-glazed items a Spanish Maiolica charger, a German Delft plate with a bird, FF mark, and a Delft hand warmer in the shape of a book.
1449	A Dr Wall period Worcester scale blue tankard, circa 1770, 12.5cm high, with crescent mark.		
1450	Three early English porcelain blue and white teabowls, circa 1788-60, one Vauxhall, one probably Bow, the third Worcester octagonal shape.	1464	A Meissen Monkey Band figure of a musician, 20th century, playing a violin, crossed swords mark, 13cm.
1451	Two Russian enamel beakers and a bisque commemorative group, the enamels made for the 1897 Jubilee and the 1911 Coronation, the group showing Edward VII and Queen Alexandra in Coronation robes, 21cm.	1465	A 1st Period Worcester junket dish, circa 1770, moulded scallop shells and painted florals in underglaze blue, 25cm diameter, crescent mark.
1452	A pair of Sevres oval dishes, sated 1787, blue enamel ground with flower panels and raised gilding, crossed LL marks with date letters KK, decorator's marks cm (Michel-Gabriel Commelin) and m:x (mlle Xhrouuet), 27.5cm.	1466	A Lomonosov Russian porcelain figure depicting the fable of the Cat and the Cook modelled by V.A. Mikhalev, 19cm, printed mark in blue.
1453	A Royal Worcester 'Painted Fruit' snuff box, hand painted Fallen Fruit by Jason Bowman, with printed factory marks in black and numbered 74 from a Limited Edition of 250, 6.5cm.	1467	An Italian Maiolica pottery by Ulysses Cantagalli bottle. 13cm. a vase 9.5cm and four dishes painted with fruit, cockerel marks.
1454	A pair of Nymphenburg 'topographical' goblets, circa 1840, finely painted views, 'Nymphenburg' and 'Schloss Berg' , 12.5cm high, impressed shield marks.	1468	A Poole pottery Aegean charger decorated with Knight on horseback by Diana Davis, printed marks.
1455	A good Minton vase attributed to William Mussill, painted bird and blossom on a 'Barbotine' ground, gold border in the manner of Christopher Dresser, impressed MINTONS and date code for 1878, 27cm.	1469	Four French 18th century snuff box parts, the porcelain St Cloud and Mennecy, one large lid in enamel, 9cm, with original silver and ormolu mounts.
1456	Three Worcester plates, one by Chamberlains in Imari style, one Flight, Barr and Barr with bat-printed border, the third a trial plate in the style of James Giles.	1470	Three Asian items, a Japanese Arita porcelain leaf dish, Edo period 18th century, a Chinese Benjarong stem dish made for the Thai market, and a Chinese Kangxi blue and white conical bowl.
1457	Two Victorian moulded jugs, one with the Distin Family of horn and saxophone players, 13cm, the other by William Ridgway with satyrs and scrolls.	1471	A Chinese porcelain famille rose artichoke cup and cover, Qianlong circa 1780, the custard cup with conical lid, 9cm high, probably for artichoke butter.
1458	A Caughley saucer dish, circa 1780-90, blue and white 'Pagoda' pattern gilded rims, 21.5cm mark.	1472	Two 18th century Chinese Export dishes, famille rose 'Jacobite' decoration, both with retailer's inscriptions for 'Coombes, Queen St. Bristol', 26.5 and 28.5cm. (note Coombes was a well known china dealer in Georgian Bristol).
1459	A Royal Vienna plate, 19th century, painted with 'Cupid Disarmed' after Angelica Kauffman. 24.5cm shield mark.	1473	A large Japanese Arita flask, probably Edo period, 18th century, in the shape of a tea whisk (tokkuri), in Imari style with figure panels, one with a tiger in relief, another with bijin, 31cm high, six character Chenghua mark.
1460	An 18th century Bow model of a songbird, on a floral stump, 6cm high, circa 1760.	1474	A Chinese famille verte vase and cover with powder blue ground and 4 character Kangxi mark, 20cm.
1461	A Royal Worcester plate by William Hale, dated 1913, hand painted flowers and butterfly signed W. Hale, printed mark with date code, 22,5cm.	1475	A Dutch Delft blue and white plate from the 'Hatchet' Factory and a Dutch Delft plate from the 'Peacock' Factory.

1476	An early Japanese Imari plate, the base with four stilt marks, possibly late 17th century or early 18th century.	1491	A quantity of blue transfer printed china to include a large wash jug "Italian flower garden" by JWR, a large serving plate and two smaller ones, tankard, etc. [some chips and cracks].
1477	A part Wedgwood 'Quince' oven to table ware to include: six of each dinner, side plates, six soup bowls and six dessert dishes, two lidded tureens, three serving dishes, etc, together with a vintage two Chichester stainless steel dishes.	1492	A collection of Crested china hats to include: Shelly, Porcelle, etc.
1478	A quantity of Denby 'Troubadour' speckled stone ware: to include: eight cups and saucers, four side plates, sugar bowl, lidded tureen and sauce boat, etc.	1493	A quantity of Wade whimsies and Disney figures.
1479	A quantity of display plates and soup bowls including Constable, Ridge way , potteries etc a royal Tudor ware charger 1828 a Spode jewel Copeland plate, and other plates.	1494	Two Dame Laura Knight Coronation mugs.
1480	Seven Dog theme display plates, a blackbird pie funnel, Kelsboro ware Character jug etc.	1495	Two Norman Underhill figures one of a fisherman, and the other of a pirate.
1481	A small quantity of Tiles to include four 19th century floral tiles marked Worcester to verso.	1496	A Sitzendorf china table lamp with a figure of a gentleman, some damage to flowers and leaves.
1482	Three Wedgwood & Son Tiles of characters from Midsummer Night's Dream (one a/f), 8" square.	1497	Two Guy Sydenham Studio pottery items to include: a small vase, 3" tall and a jug, 4" tall.
1483	A Mason Cash & Co mixing Bowl, 12 1/4" diameter and a T.G. Green "Cornishware" rolling pin [wood needs replacing].	1498	A West German style two handled ceramic pot having applied black circular and oval trails with glazed infills over the stone effect body with purple glazed interior, 9 1/2" tall x 9" wide.
1484	A quantity of part coffee/teasets to include Copeland Spode "Chinese Rose", Royal Albert "Forget me not", Royal Copenhagen coffee cups and saucers, etc.	1499	A box of miscellaneous china to include: Royal Ivory porcelain tripod horn vase having gilt highlights, 4 1/2" high, an Indian tree china cake server, a quantity of Welsh souvenir ware, an oversized 'Tyke' mug with image and Yorkshire dialect phrase, etc.
1485	A small quantity of china to include a Royal Worcester porcelain pattern 1947 vase (a/f), a Belleek vase, Royal Crown Derby "Derby Posies" vase, stoneware pen holder, etc. (some a/f).	1500	A box of china to include: butter dishes, Kensington ware 'Primula' cruet stand, Crown Devon 'Garden Path' yellow sugar shaker, honey pots, etc.
1486	A quantity of china to include a Chinese bowl (extensively damaged), two Wedgwood "Morning Glory" bowls, Baan Celadon Koi fish ornament, cheese dish, etc.	1501	Five novelty tea pots, one Country Roses fire place teapot, 11 1/2" x 9 1/2" etc.
1487	A quantity of china to include Royal Doulton "Cambridge" dinner plates, two Royal Albert "Summer Glade" cake plates, Royal Winton jardiniere, etc.	1502	A box of novelty jugs to include. three crinoline lady jugs and pots, 'Kookaburra' jug, Barratts creamer, etc.
1488	A quantity of pottery including Denby hot water jug, Studio pottery vases and jugs, etc.	1503	A quantity of Beatrix Potter figures to include: Royal Albert 'Peter in Bed', a Beswick 'Peter Rabbit', a musical Mozart's Lullaby 'Benjamin Bunny', etc, plus a Brambly Hedge plate.
1489	A quantity of "Denmark" pattern tea and dinner ware of various makes to include Mason's, Myott "Finlandia", etc.	1504	A quantity of blue and white 'Old Willow' pattern plates to include: six of each 7", 9" and 10" plates, five soup dishes and a bowl (wear to rims and as found).
1490	Three pieces of continental porcelain to include a Cherub on a Carriage being pulled by birds, a floral encrusted and hand-painted basket and a floral encrusted lidded pot with a rose finial [all a/f].	1505	Eight Royal Albert Christmas wall plates, plus one Wedgwood and one Royal Doulton Christmas plate.
		1506	Nine Bradex wall plates to include: 'Thatcher', 'Blacksmith', 'Basket Maker', etc. plus two Royal Doulton plates one being 'Classic Sportscars' and the other 'The Golden Wedding Anniversary of The Queen and The Duke of Edinburgh'.

1507	Two large Bargeware teapots (some damage to each).	1525	A quantity of T.G. Green Cornish ware (as found), together with a signed copy of Cornish ware by Paul Atterbury items to include: a measuring jug, 5" high, five jugs, a Staffordshire mixing bowl, 10 1/4" diameter, etc,
1508	Three Coalport 'Indian Tree Coral' lidded vases and ginger jars (one lid matched).	1526	Three Famille Rose porcelain lidded jars with colourful painted scenes of Cantonese figures, birds and flower, the lids having gilt rims one being 4" diameter x 4 1/2" high, another being 1 3/4" diameter x 2 1/4" high and the third 1 1/4" diameter x 1 1/2" high (as found).
1509	Four swan ornaments in Beswick Studio, Royal Doulton and Leonardo (wing tip on one broken but piece present).	1527	A stoneware decanter and tumbler possibly Fullen Stoneware having dark blue and green glaze both with distinct incised marking, the decanter is 10 1/2" high and the tumbler 3 3/4" high, together with a Royal Doulton Stoneware jug with harvest scene 5 1/2" high (as found).
1510	An old Derby dessert service to include: heart shaped and two oval serving dishes and four plates with floral spray decoration and gold band to the rims, (some fading and hairlines).	1528	Two small dishes each having wavy edges, one with hand painted floral design and pink ribbon and the other blue and white with basket of flowers (both as found) and both 4 3/4" diameter.
1511	A Derby porcelain set of eight coffee cans and six saucers (some hairlines and one visible chip to one can).	1529	A porcelain bowl and plate, Imari style design painted with flowers in blue, iron red with some gilt highlights (bowl with stapled repair both as found), bowl 7" diameter and plate 9" diameter,
1512	An old Derby porcelain teacup and saucer with blue and gold rim and a Derby sauce boat with blue and gold decoration (some fading).	1530	A white Staffordshire mantle spaniel with gold padlock
1513	Three Royal Crown Derby trios with sprays of poppies and grasses.	1531	A Spode plate 'Durrow Plate' in the original box.
1514	Two Royal Worcester mask jugs, one with black stamp, the other with brown stamp, 5 3/4" and 4 3/4" tall.	1532	A Continental Majolica wall bracket.
1515	A Willow pattern pickle dish with staple repairs and blue and white porcelain sauce boat.	1533	A quantity of china to include: Wedgwood Calendar plates, a set of three graduated jugs, and Mid Winter plates, etc.
1516	A quantity of cabinet cups and saucers to include; Hammersley, Copeland, Worcester, etc. plus a floral and gilded ewer jug, and a Coalport bud vase, etc.	1534	A quantity of china to include: unmarked dessert service (comports lacking stems), Spode 'Geranium' dish, Coalport pin dish, bud vase, etc.
1517	A quantity of display and side plates to include: Wedgwood, Daniel & Arter, Copeland, crossed swords marked, etc. (some staple repairs, cracks and chips).	1535	Two Royal Crown Derby cups and one saucer in Imari pattern, a Royal Worcester miniature mug, a coffee can and saucer for T. Goode & Co, London and a Basil Matthews model of a mouse on a small tree trunk eating an ear of corn with ladybird climbing up, 2 3/4" tall.
1518	A quantity of blue and white china to include: Adams tankard and plate Bristol Poutney serving dish and dinner plate, Fenton 'Old Foley Ware' teapot, etc.		
1519	A quantity of Willow pattern china to include: cups, saucers, plates, bowls, teapot, etc.		
1520	A quantity of part tea sets to include: Royal Doulton, Gaudy Welsh, Colclough, etc. plus a Masons tea pot (lid chipped), tea for two pot, etc.		
1521	A Royal Doulton 'Matsumai' dinner service to include: six each dinner, breakfast and side plates, a lidded serving dish and sauce boat, stand and ladle.		
1522	Two boxes of china and glass to include: part tea sets, coffee cans and saucers, dessert plates in Wedgwood, Coalport, Queen Anne 'Hookers Fruits' plates, etc.		
1523	A quantity of Royal Doulton 'Norfolk' dinner and coffee ware (some crazing).		
1524	Two Oriental style table lamps with bird and floral decoration with shades, 20 1/2" and 16 1/2" high including the shades.		
			<u>GLASS</u>
		1541	A box of coloured glass to include: carnival glass bowl, dishes and jugs, a large green glass footed fruit bowl, and leaf dishes.

1542	A quantity of glass to include: a large footed vase with Art Deco style design, 8" high (as found), a rectangular decanter with stopper, cut glass posy vases, one 'Made in Edinburgh' boxed Royal Doulton cut glass bell, a large perfume bottle, etc.	1563	A Bristol Blue decanter and stopper, early 19th century, gilt band of vines and inscribed 'Brandy'. 23.5 cm.
1543	A collection of paperweights and two glass horses [a/f] and a very large burnt orange decanter.	1564	A modern presentation Decanter and stopper, hand engraved with Arsenal players, one side with Mesut Ozil, the other side with two other well known players (need to ask an Arsenal fan!!), 28cm.
1544	Two Studio heavy glass Vases in blue and clear and green.	1565	Three pieces of Bohemian ruby glass, circa 1830-1870, comprising a 'ranftbecker' with gilded scrolls and inscriptions, 12cm, a handled spa glass, and a scent bottle and stopper.
1545	Two crystal bells, a crystal bird, two sets of 1970's sherry glasses and Royal Wedding and Silver Jubilee stamp packs.	1566	A Decalomania (or Decalcomania) glass vase and cover, 19th century, internal decoration of flowers, birds and butterflies, 30cm high.
1546	A heavy Waterford crystal ashtray.	1567	A scarce American pressed glass model of a tomahawk moulded with the head of a native American chief, by Degenhart/Boyd, and an Australian mid century ceramic boomerang dish decorated with an Aborigine, 31cm wide.
1547	An Italian blue red glass Vase with diamond lattice, 11" high.	1568	An impressive Bohemian overlay glass Tankard or stein, circa 1870, overlaid in white and cut with panels enamelled with flowers, hinged pewter cover set with porcelain disk inscribed 'Zum Andenken', 16cm
1548	An Art Deco boat shaped coloured glass centrepiece, 12" long plus a large retro chrome glass and bakelite sugar container.	1569	Three items of early enamelled milk glass (milchglas) including an 18th century German/Swiss pharmacy bottle, a Bohemian column, 13cm and a Beykoz (Turkish) ink pot.
1549	Six Bohemian blue, gilt and painted drinking glasses, each 4 1/2" tall.	1570	Antique glass items, an 18th century cut sweetmeat pot and cover, a Regency square decanter and stopper, 12cm, and a Victorian claret carafe.
1550	A large slice and lattice cut crystal glass Decanter with broad silver collar, Birmingham 1975.	1571	Two Chinese cameo glass snuff bottles, multi coloured overlay and hand carved through four layers, hardstone stoppers.
1551	A fine crystal glass thistle shaped Vase with thumb, lattice and slice cut, standing on knop and double star cut base.	1572	A box of part glassware to include: champagne, sherry, liqueur and wine glasses, etc.
1552	A tall Denizli white glass Vase with centrefold, 20 1/2" tall.	1573	A box of cut glass to include: a fruit bowl, 8 1/2", four tumblers, two sets of four sherry glasses and three wine glasses.
1553	A vintage Uranium green glass dressing table set consisting of tray, three lidded pots and a ring holder.	1574	A small quantity of glass including paperweights, dressing table tray, etc.
1554	An etched glass bonbon dish, two sweet dishes and a pair of frosted floral bud vases.	1575	A quantity of glass to include a Finnish Riihimäki style vase, a pair of Villeroy & Boch candle holders, a set of five etched tumblers, etc.
1555	A quantity of glasses to include: Waterford sherry glasses, Cristal d'Arques Martini glasses, whisky tasting glasses, etc.	1576	Ten Victorian green sherry glasses.
1556	Three vintage opaque glass hand painted Vases, (one matching pair of floral design and the other with water mill scene).		
1557	Six wine glasses with coloured bee hive style stems.		
1558	A vintage Caithness crystal glassware to include: fruit bowl, two vases (only two with marked Caithness).		
1559	A quantity of Cristal d'Arques Longchamp wine glasses, along with cocktail glasses		
1560	A cut glass ship's Decanter and two plain glass decanters.		
1561	A Fortnum and Mason glass teapot with two cups and saucers.		
1562	A Façon de Venise glass 'gemel' bottle or double cruets, 18th century, raised on knopped, hollow baluster stem. 25.5cm.		

1577	A Czechoslovakian Chribska thick lobed triform glass bowl in lime green and cased with clear crystal, 3 1/2" tall x 5 1/2" wide, along with a vintage paperweight in ice blue having a spiralled inner flower and a floating clear bubble a rough pontil in concave, age worn base, 2 1/2" tall x 3" wide.	1604	A wall hanging Oak Corner Cabinet, 29" wide x 43" high.
1578	A vintage Scandinavian olive green glass vase with angular rim and thick clear base, 10 3/45" tall	1605	An Oak wall hanging Corner Cabinet having a 13 pane door, (four panes cracked) and having brass "H" hinges and swan neck pediment, 25 1/4" wide x 43" high.
1579	A thick heavy Art glass vase of barrel form having swirled turquoise bands in the white body and a thick clear base, 13" tall.	1606	A Mahogany Bookcase on Cupboard having a pair of frieze drawers and adjacent shelving, 42" wide x 17" deep x 84" high.
1580	A Caithness 'Xanadu' heavy ovoid glass vase, designed by Colin Terries in 1996, having merging tones of purple, pink and lilac pulverized enamel over an opaque white core and with applied trails, 7 3/4" tall	1607	A pair of bedside tables, each with two drawers and magazine storage recesses, 16" wide x 11" deep x 26" high.
1581	A circa 1970 Riihimaki 'Padlock' red vase by Helena Tynel, model No 1311, (there is a hairline crack near top) 8 1/4" tall x 5 1/2" wide.	1608	An Oak occasional Table with a shaped top, the twist legs united by a lower shelf, 21 3/4" x 15 1/2" x 28 3/4" high.
1582	A heavy blue toned glass perfume bottle having a shallow teardrop stopper, 6 1/4" tall, along with a Murano glass bird in maroon and blue and having original label 'Venetian Art Glass'. 5" tall x 3 1/2" long.	1609	A Yew-wood finished lady's Writing Table having a gold tooled brown leather top, a pair of frieze drawers and an upstand with six small drawers flanked on each side by a cupboard, 36" x 21" deep x 41 3/4" high.
1583	A vintage Murano style ornate hexagonal glass bowl in merging colours of green and amber and cased in clear crystal, 4 1/2" tall x 10" wide.	1610	A cross-banded Yew-wood rectangular Coffee Table with lower shelf, 42" x 21" x 18" high.
1584	An exquisite Victorian frosted and clear pressed crystal glass Tazza of geometric form and with a uranium glass stem and having age related wear to the foot, all in excellent condition for its age, 7 1/4" tall x 9" wide.	1611	A pair of satinwood fretworked backed side Chair having turned front legs and green simulated leather seats.
1585	A quantity of cranberry glass to include: jugs, vases, sugar shakers with plated tops, etc.(some chips to a few pieces).	1612	A Satinwood shaped top occasional Table with a lower shelf uniting the legs, 24" diameter x 28" high.
1586	Six glass decanters including Stuart, etched, etc.,	1613	An Oak early 20th century Arts & Crafts Dressing Chest having three long drawers, triple bevelled mirrors supported on a base with a shelf and standing on tapering square legs, 42" wide x 18 5/8" deep x 61 1/2" high.
		1614	A buttoned brown leather upholstered office/reception chair.
		1615	A pair of early 20th century Mahogany framed side Chairs having profusely fretworked and carved backs, cabriole front legs and floral fabric over-stuffed seats.
		1616	A 1920/30's medium Oak Bureau Bookcase having leaded glazed doors, three long drawers below the slope revealing an interior with nine pigeon holes, 36" wide x 13 1/2" deep x 78 3/4" high.

FURNITURE

1601	A very heavy Mahogany swing-leg, pad foot drop-leaf Table, 43 1/8" x 15" extending to an oval 48" and approx. 27 3/4" high (leaves currently fixed in the down position by a strut beneath).	1617	An Oak draw-leaf Dining Table having a parquetry top and standing on cabriole legs terminating in scrolls, 39" x 59" extending to 96" and 29 3/4" high approx.
1602	A pair of circa 1900 Mahogany solid seated hall Chairs having turned front legs and fretworked backs with shield details to the centre.	1618	A set of four elegant Oak framed Dining Chairs standing on turned front legs and having floral and foliage carved top rails, the back pads and overstuffed upholstered seats finished in green ground beige/gold lattice and foliage pattern fabric.
1603	An early 20th century Mahogany side Chair standing on turned front legs and having an overstuffed Rexine upholstered seat.		

1619	An unusual framed Mahogany framed circular seated Elbow Chair, standing on swept legs and with curved backrest merging with the arm supports, the seat upholstered in beige/grey/brown tartan patterned tweed fabric, by Urquhart and Adamson, Liverpool.	1630	A heavy rectangular Mahogany Table standing on a heavy base with double supports united by a central stretcher, 42" x 29 3/4" x 29" high.
1620	A circa 1900 Satinwood flap-over Tea Table standing on turned legs, 36" x 17 3/4" x 17 3/4" extending to 36" and 30 3/4" high.	1631	An early 19th century peg-joined Oak solid seated, open armed Armchair standing on turned front legs and having heavy scroll terminating arms and a carved detail cross-splat.
1621	A highly collectable Charles II period Walnut side Chair having scroll motif front legs mounted by a carved and fretworked stretcher and with a turned "H" stretcher, the backrest with tapering turned side supports having an ornately carved top rail carved scrolling foliage, the over-stuffed seat and back panel upholstered in Wedgwood blue Dralon, 51 1/2" high x 18 5/8" wide x 19 1/2" deep.	1632	An Oak Chest on legs of one long and two short drawers having brass back plate drop handles, 36 1/2" wide x 17 1/2" deep x 37 1/4" high.
1622	A Victorian ebonised Side Cabinet having ormolu mounts, the glazed door revealing an interior lined with velvet, 31 5/8" wide x 12" deep x 38 3/4" high (key present).	1633	An Oak Chest of three long and two short Drawers having flush fitting brass drop handles, 43 1/2" wide x 21 5/8" deep x 34 3/8" high and standing on turned legs.
1623	A contemporary Onyx surfaced Circular occasional Table standing on a heavy brass/gilded finish base, with triple supports and three small feet, 36" diameter x 19" high.	1634	A set of four mixed woods, early 20th century side Chairs standing on square front legs and having green velvet upholstered over-stuffed seats and carved detail to the top rails.
1624	An appealing open armed Elbow Chair standing on turned tapering, fluted legs, the ebony strung arms, seat and back upholstered in very pale green fabric.	1635	A circa 1800 peg-joined Oak Welsh Dresser base having four frieze drawers and standing on five tapering square legs, and having oval brass backplate drop handles, 98 1/2" wide x 17" deep x 34 1/2" high, (the feet of a plate rack are present but the rack is absent).
1625	A Yew-wood finished Kneehole Desk having a central frieze drawer with a slide-out surface for a computer keyboard and flanked with a frieze drawer to either side, each with a cupboard below and standing on bracket feet, 50" wide x 24" deep x 30" high.	1636	A 19th century Mahogany drop-leaf Side/Centre Table having a pair of frieze drawers and standing on two end supports with splay feet terminating in paw-capped brass castors, 25 5/8" deep x 36 1/4" extending to 57" and 28 3/8" high approx.
1626	A dark Oak drawleaf Dining Table standing on fretworked supports, united by a pegged central stretcher, 27 7/8" x 45" extending to 69" x 30 1/8" high.	1637	A Mahogany curved ended Dining Table standing on tapering octagonal legs, 35 3/4" x 71" extending with one leaf to 83" and 29 3/4" high approx.
1627	A contemporary Oak Court Cupboard style Sideboard, the upstand with a pair of opposing leaded lattice glazed doors, the base with three short frieze drawers and three cupboard below, 60 1/4" wide x 18 1/4" deep x 49 1/2" high.	1638	An Edwardian low Armchair standing on tapering square front legs and upholstered in beige/green ground stylised floral and foliage decorated fabric.
1628	A compact Oak Mule Chest having a pair of lower short drawers and standing on bracket feet, with brass backplate handles, 36" x 18 3/4" x 20 1/2" high.	1639	A pale green Dralon upholstered pre-1950 Elbow Chair.
1629	A set of four Edwardian Mahogany/Walnut Dining Chairs standing on turned and reeded front legs with brass castors and having a carved top rail and upholstered to the seats and backs with beige Dralon/velvet.	1640	A Victorian Mahogany framed balloon back side Chair standing on cabriole front legs, the seat overstuffed upholstered in dark crimson velvet.
		1641	An Eastern hardwood "x" legged Stool, 22 1/2" wide x 15" deep x 23 1/2" high, profusely decorated with inset bone and lightwood stringing (all proceeds from the sale of this stool will go to "Crete for Life, helping children in Aleppo recovering from war and natural disaster).

1642	A circa 1900 Oak Sideboard having a pair of carved front frieze drawers, a lower pot shelf and an upstand, 42 1/4" wide x 15" deep x 44" high approx.	1656	An Oak framed Hall Chair having twist supports and floral upholstered seat and back splat.
1643	An Oak Refectory type Dining Table standing on bulbous turned supports with a central stretcher, 72 1/4" long x 32 1/2" wide x 28 5/8" high.	1657	An Oak framed Hall Chair standing on turned and fluted front legs, the back having a small carved splat, the pediment with a mirrored pair of lions in ascanse pose, the seat being upholstered in pale beige fabric.
1645	A lightwood strung Bureau Cabinet, the slope opening to reveal an interior with twelve pigeon holes and two drawers and with a recessed pen well, the upper cabinet having a pair of opposing 14 pane doors, and standing on brief cabriole legs, the base with three drawers, 36" wide x 18 1/2" deep x 80" high.	1658	A Satinwood framed cane seated and backed low Nursing Chair.
1646	A Mahogany single Bedstead having a buttoned beige Dralon/Velvet headboard and with carved fruit and foliage features, 41" wide x 51" high, suitable for 36" base/mattress.	1659	An Edwardian Mahogany low Side Chair with lightwood stringing and inlaid details, the seat and back pad upholstered in stylised floral pattern fabric.
1647	A Mahogany Chest of two long and two short Drawers having brass back plate drop handles, 36 3/4" wide x 8 3/8" deep and 39 1/4" high.	1660	An Edwardian ebonised framed low Side Chair having turned and fluted supports and legs, the seat and back rest upholstered in beige ground tapestry fabric depicting stylised flowers in polychrome colours.
1648	An octagonal conservatory Table having a lacquered top, the legs united by a turned detail cross stretcher, 19 1/4" diameter x 28" high.	1661	An early 20th century oval seated and backed Nursing Chair standing on turned front legs, the seat and back upholstered in beige ground tapestry able illustrating stylised flower blooms in polychrome colours.
1649	An early 20th century Mahogany Side Table standing on turned legs and having a pair of frieze drawers with brass knobs, 37 1/4" x 19 5/8" x 29 1/2" high.	1662	An early/mid 20th century oval Stool standing on painted turned and fluted legs united by a cross-stretcher, the seat upholstered in beige ground tapestry depicting stylised flowers and foliage in polychrome colours.
1650	A late 19th century Mahogany Cope Chest/Cupboard having a pair of opposing doors with a brass beading and a pair of drawers to the base with drop ring handles and standing on bracket feet. The slides to the interior are absent, having been used as a wardrobe, there being a hanging-rail installed. 46 1/2" wide x 21" deep x 48" high.	1663	A stylish 1930/40's Oak Sideboard having a blind fretwork frieze, a central cupboard, the door panelling resembling a portcullis and flanked on either side by a pair of short drawers with wooden knobs, standing on fluted square legs with an "H" stretcher, 60" wide x 21" deep x 42" high approx. (key in office).
1651	A stylish Oak art deco design Bedroom pair of a Dressing Table with adjustable mirror, 35 1/4" x 18 1/2" deep x 58 1/2" high and a Tallboy, 26 1/2" x 18" deep x 36" high, each with oak bar handles.	<p style="text-align: center;"><u>Saturday 9th August 9:30am - BOOKS, RECORDS ETC</u></p>	
1652	A Teak Tallboy of six easy-running Drawers having brass knob handles, 27" wide x 18" deep and 46" high.		
1653	A pink upholstered three piece Lounge Suite.		
1654	A Mahogany and other woods Chest of three long and two short Drawers having turned wooden knobs and standing on turned legs, 41 1/2" x 19 3/8" x 38 3/4" high.		
1655	A Globe Wernicke style Mahogany Bookcase in four stages, three having lead glazed doors, the base with a full width drawer, 34" wide x 12 1/4" deep x 46 3/8" high.		
		2001	Two small boxes of books relating to Cinemania, film and Hollywood.
		2002	A quantity of Two Wheels magazines and a quantity of music sheets.
		2003	A box of books to include Politicians and the slump, The Origin of Speeches, Darwin from Darkness to Light by Victor Gollancz.
		2004	A box of hardback books including Laurence and the Arabs by Robert Graves, the Complete Angler, the five Nations by Rudyard Kipling etc.
		2005	A box of hardback books to include Strand Magazine, The Moonstone by Wilkie Collins with Kitchener to Khartoum etc.

2006	A quantity of hardback books including Heroes of Britain in Peace and War, in days of danger, with Cortez in Mexico etc.	2030	A bag of books to include Alice in Wonderland and through the looking glass, Bambi, Rock Garden etc.
2007	Two boxes of books on cooking , Natural History, gardening, British Villages etc.	2031	Two boxes of books to include Bibles, AA Walk tours, Britain discovered etc.
2008	22 Novels by Charles Dickens - The Rochester edition of Dickens novels.	2032	A box of mixed books to include Children's books, Range Rover Haynes manual etc.
2009	A quantity of books to include British Wildlife, Clarkson the Top Gears etc.	2033	A small quantity of books to include Tom Kerridge, Punk, New York 1960, The great Rock discovery etc.
2010	A quantity of Geographical Magazines dating from 1930 to 1950's	2034	A crate of books including Boy's Own Annual, Harpers pictorial History of the civil war, English pastels 1750-1830.
2011	A quantity of cricket related books to include Brian Johnston, Boycott on cricket etc.	2035	A box of books to include Garden Planning, two volumes of the outline of Literature, the Buildings of North Lancashire.
2012	A small quantity of cook books and two boxes of recipe cards.	2036	A box of books to include The Years of War in pictures, four volumes of the History of the Historic ships etc.
2013	A box of war related books to include Great Battles, flying colours, cross country etc.	2037	A quantity of 1950's magazines to include "Do it yoursel'f, Lion and School Friend comics, etc
2014	A small quantity of Ward Lock &Co travel books including Conway, Tenby etc.	2038	A box of books to include Through the looking glass, the adventures of Huckleberry fin, Alice's Adventures in Wonderland, etc..
2015	A quantity of Penguin and pelican paper backs including T S Elliot, Gerald Durrel, Lord of the Flies etc.	2039	A box of books including The buildings of Gloucestershire, the vale and the Forest of Dean, Dr Bradley remembers, grass of paranoias etc.
2016	A box of books to include novels by Tennessee Williams, John-Paul , Sartre, Gerald Darrell.	2040	A privately printed 1961 copy of trial of Lady Chatterley, copy no. 1953/2000 signed by Allen Lane.
2017	A box of mainly paperback spy novels including Tinker Taylor Soldier Spy by John Le Carte Chester Hines novels etc.	2041	A hardback volume, "Enid" by Alfred Tennyson illustrated by Gustav Doer. printed by Edward Moxon & Co London,1868, a/f.
2018	A box of books to include The Canterbury Tales, Eliza cook, the Landsdowne poets, etc.		
2019	A box of paperback Novels to include J R R Tolkien, Armistead Maupin, John Carre.		
2020	A box of books including John Goldsworthy, The story of Napoleon, The Bafut Beagles etc.		
2021	A quantity of books on Art related topics to include , The Impressionists, printing and drawing skies, Picasso etc.		
2022	15 Volumes of the Encyclopedia Britannica ninth edition published by Adam and Charles Black 1875.		
2023	A boxed set of five volumes of the Photographic History of the Civil War by the blue and grey press ltd.	2051	A pair of Ernest Louis Lessieux (1848-1925) Watercolours depicting "Les Rochers Rouge-Menton" and "Les Pris en Cap Martin", 19 1/2" x 14 1/4".
2024	A set of two volumes of World War 1914-1918 published by The Amalgamates's press etc.	2052	A large framed and mounted Irish watercolour depicting Cushendall Bay, signed G.W. Morrison, 40" x 23" ****.
2025	A quantity of books to include seven pillars of Wisdom by T E Lawrence, The Kon-tiki expedition, Windsor caste by answorth etc.	2053	A small framed Watercolour depicting a country landscape, signed Massard.
2026	A box of books including novels by Maxin Gorky, Tony Hillerman, Joseph Heller etc.	2054	A framed Limited Edition no. 366/850 print by John Tucko H of a Labrador. ****
2027	A quantity of books to include Martin Cruz smith, Bitter lemons by Lawrence Durrell.	2055	A framed Print entitled 'Sugar Loaf Mountain from the Keepers', no visible signature.
2028	A box of books to include hardback novels, Penguin paperbacks, maps etc.	2056	Four assorted prints and a maritime watercolour.
2029	A box of books to include Dictionary's hardback novels, the letters of Private		

OIL PAINTINGS, **WATERCOLOURS & PRINTS**

2057	A framed Photograph of the Boxer "Henry Cooper" signed by Henry Cooper.	2078	A Norman Wilkinson drypoint etching 'On the Fest' (original backboard, no frame or glass), an aquatint of Conway Castle, pencil signed Leslie Hayward, an etching after a sketch by Edward Charles Barnes June 1882 and a Thomas Todd Blaylock etching 'Breeze on a River'.
2058	Five boxing prints by Stephen Khamis to include Henry Cooper, Frank Bruno, etc., 18" x 25".	2079	An Andrew Findlay watercolour landscape with a house amongst trees.
2059	A framed print depicting a river landscape at sunset, 21 1/2" x 32".	2080	An Oil painting of a boy with turban, and a painting of a rosy cheeked girl with kitten.
2060	Three framed hand-painted engravings, signed 'Y Le Gouaz', 14" x 11".	2081	An Oil of Cannes, South France 1977, signed.
2061	A large Oil on board in carved oak frame, depicting four black shire horses in working harness, signed M.D. Sherwin 1976, 20" x 24" including frame.	2082	A Lucy Orchard pencil study for Brimstone and Treacle.
2062	An Oil on board of a vase of mixed colour open roses, signed E.C. Pottinger, 17" x 13", plus a watercolour of a still life of open roses and pansy in gilt frame signed E. Hon... ? 1882.	2083	A monogrammed graphite drawing of a female nude in clipboard with customised charcoal mount.
2063	A Watercolour of a winter scene Churchyard with an avenue of trees leading to a Norman Church doorway, signed Rudd, 20" x 17"	2084	A Jack Green Watercolour depicting 'Plockton, Lake Carron'.
2064	An Oil on board of a Continental lake scene with Chateau De Chillon on Lake Lemman, Switzerland, no visible signature, information verso.	2085	A modern acrylic painting 'Ohhh- All Right', inscribed verso.
2065	A 1950's or 1960's Oil painting of a female nude.	2086	A bird and watercolour doodle type drawing signed 1969. ****
2066	A Lithograph in colours of the Old Naval Hospital Port Royal, Jamaica, no. 5/25, signed.	2087	A Giovanni Battista Ferrari hand-coloured Print being a page from the First Book of Citrus 1646.
2067	A framed Poster on card - 'Live at Josca's'.	2088	A Francis Vivares engraving 'The Hop Pickers' published 1760 from a picture by George Smith.
2068	An Oil on canvas of flowers in a vase on a table with a steamship in the background, signed Bache.	2089	A Robert D Bottom Oil on canvas Irish landscape, Sligo view, signed 1977.
2069	A Cavendish Morton and Concord Morton pencil, signed print of a shoreline scene. ****	2090	An Oil of Fountains Abbey, indistinctly signed.
2070	A Victor Noble Rainbird watercolour titled 'Morning Shield' 1933.	2091	An Oil on board, Spanish, 'Heaven or Hell'.
2071	Three Parisian scenes including 'The Moulin de la Galette', signed in pencil Eugene Delate.	2092	A Bernard Dufour Oil painting of a boating scene.
2072	A Samuel Standidge Boden Watercolour boat scene and a Charles Henry Money Mileham pencil sketch 'Netley Surrey 3rd July 1879'.	2093	Two Sarah Devereaux aquatints 'Fishermen in Grado' and 'Fishermen at their Nets', 1984.
2073	An Islamic gouache painting of a Prince riding an elephant with attendants.	2094	Various sets of artist prints.
2074	Two watercolour bird studies, signed H. Binns 1927 and a pair of 19th century satirical watercolour studies.	2095	Ten sets of amazing planet prints. ****
2075	An antique Albrecht Durer print.	2096	A signed Noel Shepherdson Oil on board depicting a river landscape with woodland path, 29" x 26".
2076	A charcoal and Watercolour monochrome study of fishermen mending nest, signed indistinctly, Graves Gallery, Birmingham label.	2097	A framed and mounted Watercolour depicting a River landscape signed M. Fraser, 22" x 18 1/2".
2077	Ten various lithographs and etchings.	2098	Two framed and mounted agriculture plate III and IV Mr Morton's Universal drill, plough and harrow and Aperatus for Yorking Young horses in thrashing machine, along with flags of different Nations and various parts of vessels with the section of a first rate ship.
		2099	Four framed Engravings including Charles Martel A Poitiers, The Duke of Wellington, Worcester Cathedral and Anthony Trollope Illustration Lord Laughton and Lucy Roberts.

2100	A set of four prints depicting Vanbrugh Castle, Greenwich, published by the London Topographical Society in a single frame, 71 1/2" x 23 1/2".	2117	Three prints to include: George Hann 'Place du Tertre', Oliver Foss Remorque sur la Seine and 'The Shambles, York' by Ben Maile.
2101	A folder containing twelve prints by Robert Poland McIan depicting Scottish Highland clans, a quantity of prints taken from famous battles by Harry Payne of The Victoria Cross Gallery Series, etc.	2118	A large framed screen-print entitled 'Gentle Embrace' by Patricia Chicham, along with a Steve McCurry print 'Dust Storm' India 1988, signed. ****
2102	A framed and mounted Seascape with rocky cliffs reflecting onto a calm sea, signed A Lacy Smith, 19 3/4" x 12 1/2".	2119	A Stephen Oliver Oil on canvas entitled 'Sunset Over Copse Hill' (frame a/f), 24" x 20".
2103	A framed and mounted Watercolour depicting a busy harbour scene with boats and buildings along the waterfront, no visible signature, 21 1/2" x 18 1/2".	2120	Two large framed Prints to include: 'Antiquarian Studies' after the painting by E Grutzner, along with 'Making His Will' after I Bokelmann, 28" x 25".
2104	A framed and mounted Painting depicting a barn owl, no visible signature, 17" x 17".	2121	A large Oil on canvas portrait of a lady in a pink dress, signed Sheil lower right, 27" x 60".
2105	A pair of Lee Woods Limited Edition floral prints including 'Poppies', 15" x 15 1/2".	2122	A framed and mounted Watercolour of a busy harbour scene with a ship undergoing maintenance, signed Camball, along with a small framed and mounted Watercolour of a coastal scene, no visible signature.
2106	A framed and mounted maritime Watercolour depicting a sailing boat propelled by a gentle breeze, no visible signature.	2123	A modern framed Oil on canvas depicting two West Highland terriers, along with a Pollyanna Pickering print of a cat in a sink.
2107	Eight colour prints of Worcester, unframed.	2124	Three framed and mounted Botanical prints.
2108	A framed Mollie Cormick Oil on board entitled 'Spring Flowers', 22 3/4" x 19 1/2".	2125	A quantity of prints to include: butterflies, a photograph of a country landscape, a farmhouse in brass, birds to include: Marsh tit, Hawfinch, etc.
2109	A framed Mary Browning charcoal drawing of a golden Labrador.	2126	A framed and mounted Print of Kirkstall Abbey by Jane Pearson, King Street and Hereford Cathedral by Martin Goode and a small Watercolour of Yew Tree Farm.
2110	Four framed Japanese prints to include: 'The Courtesan Miyahito', 'Woman Reading a Letter', etc.	2127	A pair of white framed Prints depicting lilies and a butterfly, by T.C. Chiu.
2111	Two Limited Edition prints no. 16/300 and no. 183/300 prints entitled 'Jubilatus' monogrammed lower right, plus one other.	2128	A framed Print showing a scene with a young girl feeding horses, along with a framed and mounted print "The Hall in the Wood, Lancashire" from a sketch by J.S. Dodd.
2112	Three framed prints to include: Ken Howard 'Belfast' 76, a garden entrance gate, and a Limited Edition no. 147/150 Print signed Christopher Penny of a wood.	2129	A large quantity of glazed picture frames.
2113	Three unframed David Birtwhistle prints including Mr Padmore's Fountain, The Fleece Inn, etc.	2130	A pair of large prints of a lion and a tiger by Guy Coheleach (born 1933), signed in pencil, the fine reeded and veneered frames measuring 28 1/2" x 33 1/2".
2114	A framed Watercolour depicting a beach scene with palm trees, figures with cattle and boats in the distance, along with a framed print by Michael Blaker 'Morning in the Woods, no. 7/175.	2131	A framed and mounted Pen-y-Ghent II Limited Edition Print no. 2/500 by David Hemp, indistinctly signed.
2115	A framed lithograph print by Susan Sands titled 'Butterflies', along with a R McPhail print depicting great bustards, published for the Great Bustards Trust.	2132	A framed and mounted, Spring Lambs, watercolour by J Tyler (frame as found).
2116	Four Oriental prints to include: a screen-print depicting a bunch of grapes on vine leaves with a dragon fly and grasshopper, a mountainous landscape, eighteen scholars in fairyland and a bird amidst floral branches.	2133	Three Anglo Chinese School gouache paintings of Chinese junks, late 19th century.
		2134	Two framed Indian Rajasthani miniature paintings 19th or 20th century, one of Mewar Kings on a decorated elephant, the other an extensive processional scene also featuring elephants.

2135	A William Edward Riley watercolour, 'Turning to the Wind' an artist's boat, a ship in full sail, signed W.E.Riley (William Edwards Riley R.B.A., R.B.C. (1852-1937) architect and painter).	2148	A wooden framed Oil on board initialed lower right M.B. (Maureen Bowran), written verso Ancient and Modern in Galaxidi 1997, 18 3/4" x 14 3/4".
2136	A watercolour by Helen McAlpin Bacon, 'San Georgio and Barges', Venice inscribed on reverse with Rowley Gallery label (Mrs Bacon was an English socialite and painter, active circa 1920's).	2149	A framed Oil on board depicting a portrait of a gentleman in a blue jumper, believed to be by Maureen Bowran, 16" x 20".
2137	A Lionel Edwards and Lance Thackery (attrib), 'Every Dog has its Day', an original study in ink and wash, Note: this image by Thackery and Edwards was published by Hills & Co as a chromolithograph circa 1900.	2150	A framed and mounted Charcoal portrait of a seated gentleman in a striped T-shirt, initialed M.B. (Maureen Bowran), written verso 'Portrait of Roy', 26 1/4" x 20".
2138	An original watercolour botanical illustration, signed S.M. 1804, a study of yellow lilies, framed.	2151	A framed and mounted Charcoal portrait of a seated lady in a brown jacket, no visible signature, 26 1/4" x 19 1/4".
2139	A early colonial watercolour of Mauritius, in the manner of Sir John Corbett, titled 'The Creole River near Mahebourg, Mauritius'. Note: Admiral Sir John Corbett (1822-1893) was an amateur artist who painted watercolours in his spare time recording his travels in the Mediterranean, Africa and Middle East, including Mauritius.	2152	A framed Limited Edition print no. 39/225 titled 'Flowers in a Window', signed lower right D. Wilkinson (Donald), complete with Christie's Contemporary Art Certificate, 29 1/2" x 24 1/4".
2140	A Gertrude Harman watercolour of dolls, purchased 1930, signed indistinctly, the inscribed label to reverse naming each of the seven dolls and one dachshund.	2153	A quantity of prints to include: The Magic Apple Tree by Samuel Palmer, St Clement's Church by Willie Fulton, Limited Edition print no. 5/75 "Quilt" by Elizabeth Morris, etc.
2141	A framed Bonzo print by George Study, titled 'Naughty Bonzo', a teaching poster published by McMillan in 1930.	2154	Two framed Oil on board 'Window at Ash Farm', and a still life with jug, vase and a bowl, (no visible signatures).
2142	Two framed English School topographical watercolours, views of 'Gateway in Norwich 1854' and 'Tintern House, Fishpond's (Bristol).	2155	Three framed floral Watercolours 'Hydrangea' and 'Summer bouquet', both initialed M.B. (Maureen Bowran) along with a Still Life of a vase of flowers, initialed lower right S.L.
2143	Five framed English School watercolours, 19th early 20th century, landscape views, one of Conway Castle, signed W Barker, the others including Fullerton near Andover and St. Martin's Church Jersey.	2156	A framed and mounted Pastel titled verso 'Beach, Pembrokeshire 1986' by Shelagh Popham, 18 3/4" x 15 1/2".
2144	A framed Oil on board titles verso 'The Blue Teapot' initialed lower right M.B. (Maureen Bowran).	2157	A gilt framed Oil on board, signed Monica Blake depicting a lakeside Castle.
2145	A framed Oil on board portrait of a gentleman seated, written verso 'Pat' by Maureen Bowran, 18" x 21 3/4".	2158	A gilt framed Oil on canvas titled Bluebells signed Ann Lister.
2146	A wooden framed Oil on canvas titled 'In the Forest' by Maureen Bowran, 19" x 23".	2159	A framed Watercolour, indistinctly signed, depicting a village shop scene.
2147	A framed Oil on board, written verso, 'Painting on a Hot Day', believed to be by Maureen Bowran, 18" x 14".	2160	A gilt framed Oil painting of 1950's "Nocture Beaune", France, no visible signature.
		2161	A framed Oil painting of an Italian Coastal Village scene, signed "Dante".
		2162	A framed Vincent Shelby print of a cornfield print, a framed print S R Badmin A view from the Hex Grove, a framed watercolour indistinctly depicting a Village shop scene, a heavy framed fox hunting scene print signed Frank Woolton and a framed print of a Japanese Temple [wooden frame]
		2163	A quantity of prints to include Mouse hole by Kevin Platt, Lands End, Vienna Plaques, Hummel Prints etc.

2164	A framed and mounted print 'Sunflower' by Mertens, along with a framed watercolour titled 'House plants' signed Jill Mayo.	2181	A framed woodblock print titled 'Linoji Garden' by Toshi Yoshida, along with a Urushibara Wakyosai print of a white horse.
2165	A framed lithographic print reproduction no. 72/500 titled 'Sunset' by David Inshaw published by Bow Art in 1999, along with a print on board of a girl with braids by Amedeo Modigliani.	2182	A framed and mounted Henry J Denham watercolour tilted verso 'Moonlight on the Thames', 24" x 20".
2166	A quantity of prints to include: Ragland print of Etching a Rose Fosbury, a watercolour titled Sunset in the Fens, Turkish Graveyard Bosphorus, Botanical prints, etc.	2183	A pair of prints from Antiquities of Herculaneum in classical effect frames, 18 1/2" x 22 1/2".
2167	A framed and mounted Watercolour of a Cornish harbour scene, written verso 'Sennen Cove, Cornwall' by Sally Adamson 1984, 24 3/4" x 22 3/4".	2184	A framed and mounted reproduction from the engraving by W Rolfe from the sculpture by Harriet Hosmer 'Beartice Cenci' in a hand crackle varnished mount with gilded bevel, 18 3/4" x 14 1/2".
2168	A quantity of prints and needlework pictures, plus a Watercolour of a country cottage signed George Hodgson.	2185	A framed and mounted print by L.S.Lowery's famous painting 'Waiting for The Shops to Open', 28 1/4" x 25 1/4".
2169	A framed watercolour titled 'Emerald Lake' near Banff Alberta Canada (from a drawing made in 1956), signed Spencer Roberts April 1961, 26 1/4" x 22".	2186	A framed oil on canvas landscape featuring a waterfall in a forest setting, signed lower right Kinghlan, 26 1/2" x 22 1/2".
2170	A framed and mounted Douglas Sinet watercolour title verso 'Open Farmland', 25" x 21".	2187	A large framed and mounted pastel painting depicting a sunset landscape, signed lower left R Whittal-Williams (Rosalind), 34" x 26", along with a unsigned print depicting a landscape with prominent tree trunk in the fore ground, 31" x 21 1/4".
2171	A pair of framed and mounted watercolours, both signed by the artist Nigel Cameron, to include: 'The Boathouse on the Erme' and 'Tobogganing at Harbertonford' 31 1/2" x 23".	2188	A framed print on board titled 'Wandering Ponies' by Stan Mitchell, along with a large print 'At the Seaside' and Luke Fields 'A Village Wedding'.
2172	Eight framed and mounted "Winnie The Pooh" series Prints, after E.H. Shepard.	2189	A gilt swept frame, overall size 25 3/4" x 21 3/4", aperture size, 16" x 12".
2173	Five framed Monet prints to include Grand Canal, Houses of Parliament, etc.	2190	A wood veneered picture frame, overall size 33 1/2" x 41 1/2", aperture size, 27 3/4" x 34".
2174	A framed and mounted Print of the Bloreng, Abergavenny signed right Hannah Lease.	2191	A wooden framed print, "A Disgrace to his family" by Stanley Berkeley and a framed Hunting print titled "fur e feathers".
2175	Three framed Prints, two after Constable - The Mill of Dedham and Salisbury Cathedral and one after Benjamin Leader - February Fill Dyke.	2192	A framed and mounted watercolour title verso 'A Hereford Cottage', signed lower right C Bancroft, 19" x 15 1/2".
2176	A framed and mounted watercolour of Canal Llangynide by Michael Blackmore along with a unframed oil on canvas depicting a woodland scene signed A J Walsh.	2193	A Limited Edition 7/50 print 'Humbug Scrub after the Bushfire', signed Martin Hazell 2020, 21 1/4" x 16 1/2".
2177	An oval framed original David James Oil on board painting of a mountainous river landscape, signed.	2194	A pair of framed Gilbert Browne Limited Edition Prints to include: Outhouse-Wilts no. 189/200 and Ashdown, Sussex, 15" x 10 1/2".
2178	A framed and mounted Artist Proof print by David Birthwishe depicting Vanburgh Castle.	2195	Four framed prints to include: Military Order of the Temple of Jerusalem AGA Table Plan 2016, 2017, Medieval Banquet Seating Plan Caer Rhun Hall 15th May 2013, a Print of a Certificate of Admittance of The National Union of Gas Workers May 1893, a framed Print titled 'Bumpers at Shrewsbury by J. Alford and a limited edition Print no. 1/50 entitled Abersoch Tide Out, signed R. Robinson.
2179	A framed Degas print 'La Toilette', a Cecil Aldin print of a Scottish Aberdeen terrier, and a Pears print 'Bubbles' by Millais.		
2180	Six framed and mounted prints, four from the Petit Courier des Dames Collection and two from The Newest French Fashions Collection.		

2196	A Print depicting "Young Lovers in Greek Dress", with label on rear Betty Williams - old label Don Juany Haidee Lord Byron, 14 7/8" x 16 7/8".	2218	A copper coal bucket.
2197	A large red contemporary Oil on canvas, signed N. Tutton, 39 1/2" x 47 1/4".	2219	A quantity of mixed metals to include: brass chargers, plated tray, bird plaques, small Arnold & Son camping stove, etc.
2198	Exhibition prints for carpet designs along with a Mono print expressive portrait of elderly Gentleman.	2220	A box of Horse brasses and plate's, horse bits and candle sconces etc.
2199	A framed and mounted Claude Murrills Limited Edition print (no. 407/500) 'Mills on Downs', 24 1/4" x 20 3/4".	2221	A brass candelabra, 20 1/2" tall.
2200	A framed print 'The Piano Lesson' by Renoir.	2222	A box of brass kettles, elephant, wheelbarrow, etc.
2201	A framed and mounted print depicting two figures with longhair grazing up towards the Sun , signed lower right Kerti Karoly.	2223	A tall open spiral/twist Brass table lamp base, 23" tall.
2202	A watercolour depicting Cwmcarvan Church by Sue Carpenter along with a print on of fishing boats signed Albo	2224	Two pairs of Brass Candlesticks, both with pushers.
2203	A framed etching titled Windmill, Sunset by Frederick Slocombe.	2225	A quantity of brass to include: spirit kettle and stand, chamberstick, dish, etc.
2204	A Peter G. Power limited edition Print no. 261/850, depicting HMS Victory departing Rosia Bay Gibraltar on the 7th May 1805, signed by the artist and Lt. Cdr. Peter Whitlock MBE RN Naval History advisor to the Mary Rose Trust, 38 1/4" x 27".	2226	A small 19th century oval copper carriage Foot Warmer, 22 1/2" long.
2206	A large framed Print on board titled verso Sunny Landscape, indistinctly signed lower right, 30 3/4" x 22 3/4".	<u>SILVER, SILVER PLATE, ETC</u>	
2207	A still life Oil on canvas of a Vase of flowers signed M. Francis, with label "David Hills Gallery, Newark" (as found) 20" x 26 3/4".	2231	A silver plate Ladle and a mother of pearl handled Fruit Knife.
2208	Two large gilt picture frames. 26" x 34 1/2" overall aperture size 18 3/4" x 27".	2232	A canteen of Kings pattern cutlery by various makers. ****
2209	A small quantity of prints to include: 'Peace Park' by Spencer, 'Hora' by Julie Hockin, Bristol Old Theatre 1890, Redland Court, and a Ink wash of Paris.	2233	Three metal Partridge shaped salt, pepper and sugar Shakers plus a tiny pill pot with bird and flower pot decoration to the lid.
<u>BRASS, COPPER & PEWTER</u>		2234	A Silver propelling pencil, Chester 1900 by Sampson Morden, together with a silver fronted clock holder, London 1992 (clock not working).
2211	A 'Cornish pewter' Teaset by James Dixon & Sons including teapot, sugar bowl and jug.	2235	An ornate white metal three piece Cruet with blue glass liners, boxed.
2212	A quantity of copper moulds, bowl and tankard and two Epns coffee pots, (one a/f).	2236	A quantity of continental silver souvenir Spoons with enamel terminals, all stamped 800 (one as found).
2213	A quantity of Copper cooking pans and ewers.	2237	An ornate silver Spoon in presentation box, Birmingham 1950, 6" long, 41 gms.
2214	Three copper chargers and a jardiniere.	2238	Four Silver teaspoons with rose and leaf design terminals, London 1891, maker probably J. Aldwinkle and Thomas Slater, 51 gms.
2215	A copper bed pan.	2239	Two Silver condiment Spoons, London 1919, maker Charles Boyton and Sons., 8 gms.
2216	A pair of 19th century Indian baluster Brass Vases with ornate handles and all-over chased decoration, 12" tall.	2240	Six Georgian silver Teaspoons, London makers, various dates including 1794, 1803, 1808 and 1821, 84 gms.
2217	A heavy Monteith shape brass bowl chased with foliage, 8" diameter, an Epns cheese slicer, fluted bowl and posy vase.	2241	A pair of Silver fiddle-back Teaspoons, Exeter 1834, maker William Woodman, each 5 1/4" long, 32 gms.
		2242	A Picquot ware four piece Teaset with tray.
		2243	A Silver sugar Caster, London 1967, maker Richards & Knight, 148 gms.
		2244	A set of six Silver Hunting Cups, London 1906, maker William Hutton & Sons Ltd, 511 gms, in leather carrying case.

2245	A pair of Silver glove stretchers with embossed handles, London maker, Mappin & Webb, date mark indistinct.	2261	Two ladies Rotary cocktail watches, one with 9ct gold case and rolled gold bracelet, the other gold plated (some peeling, as found).
2246	A small quantity of silver and silver plate including a cased set of silver handled salad servers with crown finial, Birmingham 1981, a silver plate toast rack, a pair of grape scissors, silver plate "MCC" bowl, two pairs of plated tablespoons, etc.	2262	A W.H.W. 9ct gold ladies wrist watch. ****
2247	Two Georgian Silver tea caddy spoons, 1816 & 1818, the latter by Thomas Wallis & Jonathan Hayne] 29 gms total, plus a Silver cheroot holder, Birmingham 1907.	2263	A Samsonite case with costume jewellery to include: hat pins, earrings, beads, etc.
2248	A Silver fretwork sugar tongs, two Georgian Silver condiment spoons, 1797 & 1801, small Silver sauce ladle, etc. marked silver weight, 69 gms.	2264	A cream jewellery box with vintage costume jewellery to include: beads, brooches, etc.
2249	A Silver salt and pepper condiment set with Silver stand together with a pair of Silver Pepperettes, 1897, maker Samuel Walton Smith, total weight 118 gms.	2265	A mirror box and a 925 silver bracelet and beads.
2250	Six Silver pepper pots, various dates 1896 - 1948, total weight 153 gms.	2266	A rose topped jewellery box and a vintage 925 silver pendant, bangles, etc.
2251	Seven Silver pepper pots, various dates from 1897 - 1952, total weight 163 gms.	2267	A silver coloured jewellery box and a modern 925 silver pendant, earrings, etc.
2252	Three novelty Silver Thimbles in the form of a cat, an owl and one decorated with a family of ducks, all by Clive & Clarissa Cooke, 37 gms total and a Silver (26 gms) and enamelled Pill Pot (some damage to enamel).	2268	Twelve natural stone necklace sets.
2253	Three silver Pill Pots, each with game bird enamel decoration to tops (50 gms each approx) and a sterling Silver lidded box with gilded interior, London hallmark, 92 gms.	2269	Twenty pairs of 925 silver earrings.
2254	A Victorian Silver model of a range Cooker, maker Henry Stuart Brown, with various pots kettle, salt cellar, etc. (all items hallmarked except screw top pill pot, 189 gms total).	2270	A quantity of 925 silver necklaces and pendants.
2255	A cased set of six setting Epns fish eaters and dessert knives and forks.	2271	A wicker basket and silver and natural stone sets to include: coral, amethyst, etc.
2256	A three piece Epns tea service, plus one similar milk jug.	2272	A Wolf watch winder.
2257	A quantity of Epns cutlery and stainless steel knives and pastry forks, soup spoons, etc. plus six Rockingham Forge steak knives.	2273	A Swarovski necklace with pendant.
2258	A quantity of mixed metals to include a three piece plated Teaset, a Silver lid, a brass candle snuffer, pewter tankard, etc.	2274	A lacquered box containing costume jewellery items to include: brooches and necklaces, etc.
2259	A quantity of Epns to include: a Teaset, serving dishes, ice bucket and tongs, salts, etc.	2275	A faux leather jewellery box containing various brooches, etc.

JEWELLERY

2260	A 18ct sapphire and diamond ring, with 1ct sapphire London 1973, 4.7 grams (size R1/2).
------	-----------------------------------------------------------------------------------------



Forthcoming Auctions of Antique & Country
Furniture, Objets D'art & Collectables

at the New Salerooms situated in Pontrilas.
(Just off the Abergavenny/Hereford Road)

2025

August 8th - 9th
September 5th - 6th
September 26th - 27th
October 17th - 18th
November 7th - 8th
December 5th - 6th

Please note: Dates may alter without prior notice,
please check nearer the relevant date.

Viewing: Thursday prior to the sale dates
9am – 1pm and 2pm – 7pm
and Morning of sale from 8.00am
Check website for details

Entry Forms, Catalogues and Live Online Bidding
available from our website:

www.nigel-ward.co.uk

The New Salerooms
Pontrilas - Hereford - HR2 0EH

☎ 01981 240140 ☎

email: salerooms@nigel-ward.co.uk

CONDITIONS OF SALE

1. Whilst Nigel Ward & Co. make every effort to ensure the accuracy of their catalogue and description of any lot:
 - a. Each lot as set out in the catalogue or as divided or combined with any other lot or lots is sold by the Vendors with all faults, imperfections and errors of description.
 - b. The Auctioneers do not accept responsibility for the authenticity, attribution, genuineness, origin, authorship, date, age, period condition or quality of any lot.
 - c. All statements, whether printed in the catalogue or made orally, as to any of the matters set out in "b" above are statements of opinion only and are not to be taken as being implying any warranties or representations of fact by Nigel Ward & Co.
 - d. All conditions, notices, descriptions, statements and other matters in the catalogue and elsewhere concerning any lot are subject to any statements modifying or affecting the same made by the Auctioneer from the rostrum prior to any bid being accepted for the lot.
2. The Auctioneer has absolute discretion to divide any lot, to combine any two or more lots or to withdraw any lot or lots from the sale, to refuse, bids, regulate bidding, to cancel the sale without in any case giving any reason and without previous notice.
3. The Auctioneer has the right to bid on behalf of the Vendors for all goods which are offered subject to reserve or at the Auctioneer's discretion.
4. Unless instructions are received previously as to reserve, the Auctioneers may sell the items without reserve if they think fit.
5. The highest bidder shall be the buyer except in the case of a dispute. If during the auction the Auctioneer considers that a dispute has arisen, he has absolute discretion to settle it or to re-offer the lot.
6. The Auctioneer shall regulate the bidding at his own discretion.
7. Each buyer by making a bid for a lot acknowledges that he has satisfied himself fully before bidding by inspection or otherwise as to all the Sale Conditions, the physical condition of and description of the lot including but not restricted to whether the lot is damaged or has been repaired or restored.
8. Each lot shall remain at the Vendor's risk until sold. From the fall of the hammer the lot shall remain at the Purchaser's risk but in no circumstances must they be removed from the sale until paid for. **CHEQUES WILL ONLY BE ACCEPTED FROM PERSONS PREVIOUSLY KNOWN TO THE AUCTIONEER OR OTHERWISE SUPPORTED BY A BANKER'S CARD OR REFERENCE.** If payment is made by cheque, the Auctioneers shall have a lien upon the goods, until such a cheque has been cleared by the Bank upon which it is drawn.
9. Legal title will not pass to the purchaser until the lot (s) has been paid for in full and the Auctioneer shall be entitled to a lien on any lot sold until the purchase price is paid in full. Immediately the lot is sold the purchaser shall notify the Auctioneers of his name and address and if called upon to do so by the Auctioneer shall pay such proportion of the purchase price as the Auctioneer may require, in default of which the lot or lots so purchased to be immediately re-offered.
10. Lots shall be paid for in full and taken away from the sale at the buyer's risk and expense immediately on the conclusion of the sale, failing which the Auctioneer shall not be responsible if the same are lost, stolen, damaged or destroyed and any lots not taken away shall be at the sole risk of the buyer and subject to a charge for storage.
11. **Buyer's Premium at the rate of 20% Plus V.A.T. will be added to the hammer price of all lots purchased.**

Online Bidding

Nigel Ward & Company offer an online bidding service via nigelward.atgportals.net and the-saleroom.com for bidders who cannot attend the sale.

In completing the bidder registration on nigelward.atgportals.net or the-saleroom.com and providing your credit card details and unless alternative arrangements are agreed with Nigel Ward & Company, you:

- *authorise Nigel Ward & Company, if they so wish, to charge the credit card given in part or full payment, including all fees, for items successfully purchased in the auction via the-saleroom.com, and*
- *confirm that you are authorised to provide these credit card details to Nigel Ward & Company through www.the-saleroom.com and agree that Nigel Ward & Company are entitled to ship the goods to the card holder name and card holder address provided in fulfilment of the sale.*

Please note that any lots purchased via nigelward.atgportals.net live auction service will be subject to an additional 3% commission charge + VAT at the rate imposed on the hammer price and any lots purchased via the-saleroom.com live auction service will be subject to an additional 5% commission charge + VAT at the rate imposed on the hammer price.