



# Nigel Ward & Co. Auctioneers

The New Salerooms, Pontrilas, Hereford. HR2 0EH Tel. 01981 240140 ~ Fax. 01981 240340.  
Email. salerooms@nigel-ward.co.uk

## C A T A L O G U E

of the

*Special Early May Two-Day Sale of*

**ANTIQUE AND COUNTRY  
FURNITURE, EFFECTS, PORCELAIN,  
PAINTINGS, OBJETS D'ART  
AND COLLECTABLES**

For Sale by Auction

on

**FRIDAY 3<sup>rd</sup> MAY and  
SATURDAY 4<sup>th</sup> MAY, 2024**

**Viewing is on Thursday 2<sup>nd</sup> May  
from 9am - 1pm and from 2pm - 7pm.  
(Light refreshments available)**

Please note: Two auctioneers will be in operation for much of the Saturday sale.

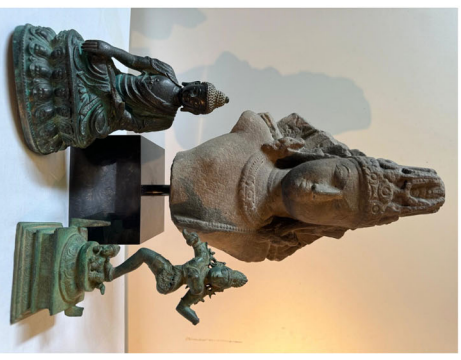
**Buyer's Premium = 20% Plus VAT (24% Incl. VAT)  
Vehicles 10% Plus VAT (12% incl. VAT)**

**Online Bidders will pay an additional fee.**

Terms: Most Major Debit or Credit Cards/Cash/Bankers Draft/Electronic Bank Transfer.

**BID LIVE ONLINE: [www.nigel-ward.co.uk/live](http://www.nigel-ward.co.uk/live)**

Catalogue **£2** or download from:  
[www.nigel-ward.co.uk](http://www.nigel-ward.co.uk)



## *Nigel Ward & Co. Catalogue 3<sup>rd</sup> – 4<sup>th</sup> May 2024*

### Friday 3<sup>rd</sup> May 9am BRIC-A-BRAC (OUTSIDE LOTS)

1	A curved concrete seat standing on squirrel ends, 42" wide x 18" high.	30	A Carrera gents 18 speed with disc brakes Bicycle.
2	A spoked Cart wheel, 45" diameter. ***VAT will be added to the hammer price of this lot.	31	A large metal 'Pub' sign.
3	A hand drive cast iron fly wheel/drive wheel, 38" diameter. ***V.A.T. will be added to the hammer price of this lot.	32	A ladies 21 speed 'Raleigh' bicycle.
4	A black painted Aluminium decorative patio Table, 55" wide x 28" high and four chairs.	33	A pair of Ski's - 'Volk' and sticks.
5	A large elegant garden Urn, 26" diameter x 37 1/2" high.	34	A six rung opening out step ladder.
6	A Concrete pillar, 31" high.	35	An arched wrought iron garden gate, 29" wide x 6' high.
7	A potted red Acer Tree.	36	A pair of bed ends - no irons, 54" wide.
8	A teak patio Table and six chairs with pad cushions and parasol, 6' long x 39" high.	37	A pink metal child's bed with slats.
9	A Cast Iron ended garden bench, 51" wide x 29" high.	38	A shovel, pick axe, rake and ground metal compactor
10	A circular Aluminium table and two chairs painted green, 27" high x 25 1/2" high.	39	An aluminium loft ladder.
11	A Garden Lion (concrete), 19 1/2" high.	40	A gents 'Carrera' 18 speed bicycle.
12	A White painted Aluminium patio table with two chairs, 27" diameter x 26" high.	41	Two Appleton fence panels with posts.
13	A yellow step walker sack truck.	42	A chrome electric Radiator.
14	A Terracotta Chimney, 15" high.	43	Two hand saws and a log splitter.
15	Cast Iron based Pub table with concrete rotating top, 23" diameter x 29 1/2" high.	44	A fire surround, 54" wide x 55" high.
16	Two concrete bird baths.	45	A Workmate.
17	A metal cabinet with three shelves, 2' wide x 18" deep x 71" high, a four drawer locker, 14" wide x 65" high x 12 1/2" deep and a Tea chest.	46	Garden tools, stocker, hedge bill, scythe, etc.
18	A terracotta Urn, lidded, 20" high.	47	Pigeon hole racking with 40 holes.
19	Two cross cut saws. ***V.A.T. will be added to the hammer price of this lot.	48	A 21 speed 'Carrera' gents bicycle with disc brakes.
20	A small concrete staddle stone, 11" approx.	49	A 21 speed 'Ghost' bicycle with disc brakes.
21	A concrete bird of prey ornament, 17" high.	50	A child's stunt bike.
22	A garden concrete gnome, 23 1/2" high.	51	A 21 speed Gents Assault bicycle.
23	Two wall fixing planters.	52	A valier bike 18 speed with disc brakes.
24	A concrete garden owl, 17 1/2" high.	52 A	Two bags of kindling.
25	A concrete garden bird of prey, 12" high.	53	A clothes airer, mirror back, curtain poles, shelving, enamel flue pipe.
26	An Aluminium handled wheeled garden cultivator.	54	A metal bistro table, 24" diameter x 29 1/2" high and a pair of chairs.
27	Two concrete planters, 13" wide x 10 1/2" high and two chamber pots.	55	A garden line petrol lawn mower with grass box.
28	A B-twin 18 speed ladies push Bicycle with carrier rack.	56	A chicken water drinker with ball cock and pipe work.
29	A 36 bottle wooden wine rack.	57	A child's swing.
		58	A concrete lion.
		59	A garden bench, 4' wide x 31" high (one broken slat).
		60	Four plastic planters.
		61	A Honda powered Rotavator (good compression) with extra feet.
		62	A glass topped table with parasol, 31 1/2" wide x 27" high.
		63	A quantity of plastic crates.
		64	A 12 rung aluminium extending ladder.
		65	Two loungers.
		66	A glass top metal framed table, 59" x 35 1/2" x 28" high, with four chairs.
		67	A Honda 4 stroke petrol mower with grass box (running order).

68	A Super Crono bicycle training equipment.	102	A flat pack trolley.
69	A 2 tonne trolley jack with handle, four timber wedges and a foot pump.	103	Two Bells whiskey bottles, a chamber pot, vases and small watering can.
70	A petrol strimmer for spares and repairs.	104	A quantity of glass water feeders.
71	A quantity of stair rods.	105	A glass butter churn and two fire fronts.
72	A roll of yellow three core electric cable plus rubber car mats.	105	A Shakespeare Seamaster fishing rod, rod rests, etc.
73	A 'Florabest' 240 volt electric mower with grass box. SOLD as SEEN - not working.	106	Framed mirrors with stained glass plus glass sections.
74	A 110 volt halogen lamp with tripods.	107	An Aluminium case plus a trunk.
75	A Qualcast electric mower with grass box.	108	Misc garden tools, stainless steel edging spade, Wilko fork and spade plus a rake, shovel and hoe.
76	A metal dog crate plus two pet carriers.		
77	Three Stainless steel containers.		
78	Two bird ornaments, a cat and a frog, fibre glass made.	109	A Ridgeback bike, 18 speed.
79	A container of garden fluids and a container silicone & Puraflex.	110	Three boxes of china, glass and mugs.
80	A pair of metal scrolled hanging basket frames.	111	A combination case and a suitcase.
81	A Leg master exerciser and a step exerciser.	112	A box of mixed china soup bowls, etc.
82	A Fit-n-fold strider exercise equipment.	113	An Axe.
83	Brass stop taps, copper fittings.	114	A large galvanized watering can.
84	A box of 10" x 16" (250 x 40 cms) Tiles.	115	A corner plant stand and a disability bath set and a Lloyd Loom style chair.
85	Galvanized timber joists brackets.	116	Weights and dumbbells.
86	A plastic box of grip clamps, Black & Decker sander, Black & Decker 4 1/2" angle grinder plus portable sander.	117	A galvanized bath and a tarpaulin and wheelbarrow flat pack.
87	A plastic box of various tools lead lamp, tin snips, spanners, gardening tools, jubilee clips etc.	118	Two cantilever tool boxes, containing screws, spanners, sockets, screwdrivers, etc.
88	A plastic box of Black & Decker hot air gun, Bosch tool box of drills, etc, hammer, hatchet, leather carrier bag of various tools.	119	Two chair risers.
89	Dumb bells and weights.	120	Stainless Steel cookware, billy cans, plate racks, etc.
90	A Flymo for spares and repairs.	121	Two lead effect double glazed units, 35" x 9 1/2", flu liner & stainless steel pipe.
91	A radiator - new, 68" x 20".	122	A 'Thetford' porta potty, electric pump, sink unit, plus other caravan equipment.
92	Ice pick, transformer, silicones, engraver, etc, Workzone grinder with wire brush attachment.	123	A plastic container of Vintage hand tools, carpenters vice, fold up bag of spanners, tool set, wood bits etc
93	A small bench, child's fold up stool, wooden box a/f.	124	A wooden piano trolley/dolly plus three old 'gallon' cans.
94	Plant supports, umbrella, brush set and gardening equipment.	125	A pet voyager 200 carrier.
95	A Flymo mower (good compression) 2 stroke.	126	Gardening tools, raw plug kit, drill set, etc.
96	Old wooden box 'West Midlands producers', a 'Landon Hereford' flask and a bread crock a/f.	127	A 7' ground breaker umbrella.
97	A 'Parnell' premier bed rail.	128	Two wrought iron hangers for hanging baskets.
98	Two metal boxes.	129	A W.D 1951 Military jerry can.
99	Kitchen scales, door stop, glass vases, clay pots etc.	130	A pair of axle stands.
100	A glass shower unit.	131	Two children's chairs.
101	A Honda, hover mower overhead valve engine, four stroke 'Cobra'.	132	A hand winch, 1200lb capacity.
		133	A two ring camping stove/grill.
		134	An aluminium pole pruner.
		135	A piece of Perspex, 5' long x 2' wide.
		136	Long bolts lead wire, old leather suitcase.
		137	Box of straps, silicones, tapes, solar lights, wall ties, in three boxes.

138	Two tool boxes (plastic) some with contents and two with storage boxes.	172	A fibreglass dragon, bust, squirrel and a concrete planter.
139	A metal tool box with 11 piece combination spanner set, allen keys etc.	173	A Titan 196cc overhead valve engine Mower, self-propelled with grass box (good compression).
140	Two adjustable metal stool stands.		
141	A wooden cat, Golden Retriever figures and a quantity of small paint pots, various colours.	174	Exterior wall light, mixer tap, builders plastering floats, cast iron pans and wall bracket.
142	A wall plaque, tiles, artificial coal, bow saw, cantilever tool box, garden sprayer.	175	Wooden planter, hose on reel, edging shears, plastic square planter and a Workmate.
143	Coffee pot, urn, chicken crock, scales etc.	176	A garden bench, 43" wide x 34" high.
144	A small hatchet, auger bits, dumbbells, etc.	177	A galvanized bath with china clay pots and a circular table.
145	Ladder roof rack tie downs, Draper 3" vice, cattle drinker, cast iron door knocker, etc.		
146	A tray of silicone.	178	Two metal stacking chairs.
147	Toyota wheel trims, motorbike tyre for Motocross, 110/90/19 x plastic tubing and Wallcrete water.	179	A pair of aluminium chairs with leaf detail.
		180	Four patio chairs.
148	A wooden garden bench, a/f, 65" wide x 41" high.	181	An Al-ko silent power Shredder (no lead).
149	Three sheets of Lin bin racking.	182	A pair of glazed strawberry planters.
150	A Gazebo plus a fold up table.	183	A Mahogany washstand with frieze drawer and marble top, 42" wide x 21" deep x 51" high.
151	Three part rolls of barbed wire.	184	An Oak sideboard, 4' wide x 19" deep x 33" high.
152	A teak patio table a/f.	185	Cast bench ended bench, 48 1/2" wide x 29 1/2" high.
153	A pair of wheels and tyres 23/10 50-12.		
154	A clay pigeon trap.	186	An Oak pot board Dresser base having three drawers and pot shelf, 73" long x 16" deep x 34" high.
155	A vintage sack truck.		
156	A three tonne trolley jack, in working order.	187	A step stool.
157	Two water butts with taps.	188	A circular Oak snap top table, 30" wide x 28" high.
158	A roll of chicken wire.		
159	Two wooden beer keg planters a/f.	189	Old leather upholstered Armchair for restoration.
160	A trailer jack jockey wheel.		
161	A metal trunk with contents - hand basin brackets, fire extinguisher multi purpose, rodent trap.	190	A quantity of golf irons, Palmer and Jemon and golf trolley and bags.
162	A small glass topped patio table, 23 1/2" wide x 28" high with two chairs.	191	A Mahogany drop leaf, swing leg table on turned legs terminating in brass castors, 42" x 40 1/2" closed x 55" open x 28" high.
163	A chiminea, glazed pots, dustbin containing flat pack greenhouse.	192	A Kitchen table, 49 1/2" x 40" x 28 1/2" high. **
164	Plant trolleys, bamboo in a pot, etc.	193	Three glazed planters with two saucers.
165	A pair of concrete square planters, 14" square x 13" high.	194	A fold up mobility chair with walking aid.
166	A circular concrete planter, 16 1/2" diameter x 10 1/2" deep plus concrete ornaments, deer, owl.	195	A blue shallow glazed bird bath, 17" diameter x 18" high.
167	Two long concrete planters, 30" long x 10" deep x 9" high and a hedgehog.	196	A fold up Wheelchair, on large wheels.
168	Two concrete square planters, 14" square x 13" deep.	197	Cast iron ended strong slatted Garden bench, 50 1/2" wide x 31" high, (slats = 1 1/2" thick x 2 1/2").
169	Three concrete long planters (1 pair, 1 odd) 2 @ 26" long x 11" x 10" deep, 1 @ 24" x 9 1/2" x 9" deep.	198	A large water heater.
170	A glass topped Patio table, 55" x 35" x 27 1/2" high with four chairs.	199	A small circular patio table with two chairs.
171	Plastic containers and buckets.	200	A circular teak patio table, 43" wide x 29" high and three folding chairs.

201	A large mulcher/chipper powered by Kohler Command overhead valve engine, electric start, in running order. On fast tow trailer base.	230	Pair of garden benches with cast iron ends and back, (one a/f), 50" wide x 32" high.
202	A garden table and bench with cast iron centres, in need of restoration plus a mitre saw.	231	A galvanized rabbit trap.
203	A circular planter with garden ornaments, a frog, etc.	232	A garden bench with cast iron back and sides, 50" wide x 27" high.
204	A concrete figure of a man sat on a garden bench, plus an otter.	233	A parasol, washing brush etc.
205	A quantity of power tools, Parkside 240 electric drill, a Draper plate joiner, bell sander, 4 1/2" angle grinder, etc.	234	Two plastic planters, 13" square x 13 1/2" high.
206	Chainsaw, cutter bar and chains, Cougar hammer drill with masonry bits.	235	Three blue glazed planters.
207	Three nail bars of various sizes.	236	Two triangle faux stone planters plus another.
208	Two spirit levels, 1 @ 6' long, 1 @ 77" long.	237	Two terracotta planters, one being glazed.
209	A quantity of chisels and lump hammers.	238	A tall blue glazed planter with a conifer planted.
210	A bucket of plastering trowels, floats etc.	239	A glazed planter with reindeer figures.
211	Two boxes of water downspout fittings, a tub of large bolts, screws, large spanner, etc.	240	A blue glazed, brown and green planters
212	A large planter with shrub, 26 1/2" high x 17 1/2" diameter.	241	Plastic planters, lawn edge, drain buster etc.
213	A buddah, angel and a lady with a sheath of corn.	243	Two circular planters, one with a conifer, 18" diameter x 17 1/2" high.
214	Garden ornaments, pig, frog, duck and a small gnome.	244	Three storage containers for fishing.
215	A cast iron pedestal stand, stainless steel waste bin and fibre glass figure of lady with an urn.	245	Three safety helmets, wire rope with safety hooks and garden sprayer
216	A quantity of garden ornaments - concrete and fibre glass, angels, frog etc.	246	A terracotta and a concrete planter.
217	A galvanized wheelbarrow with solid tyre.	247	3" metal flexible hose and four jerry cans.
218	Three fibre glass ornaments - two angels and a bird bath.	248	A bag of 4 stroke engines plus 2 stroke trimmer engines.
219	A quantity of 2" x 1" tanalised battens.	249	A Timberland trimmer, bump feed, good compression.
220	A swinging garden seat.	250	A side table with drawer, 3' x 25" x 30" high.
221	A 'Concept' mountain bike, 21 speed.	251	A dragon glazed planter , 20" diameter x 13" high with everlasting fuschia plus a 18" square x 13" high planter.
222	A bag of softwood offcuts.	252	A large planter, a/f, 19" x 15".
223	A four wheel hand trolley and electric 'jam buster' scooter.	253	Three glazed planters.
224	Eight cast iron 12" fowl house wheels.	254	A glazed bird bath and a small glazed planter.
225	Training bench & back support and a cricket bat.	255	Two garden sprayers.
226	A bag of softwood offcuts.	256	A vintage water filled fire extinguisher.
227	A Mountfield propelled mower SP533 overhead valve engine (pull cord not working).	257	A quantity of clay pots in a wooden tray.
228	A Florabest mower with 4 stroke overhead valve engine (turns but no fuel) with grass box.	258	A fibre glass Egyptian figure plus a concrete water fountain of a child.
229	A quantity of terracotta plant pots, hanging basket & artificial grass.	259	Two concrete figures of ladies 34" high.
		260	A concrete Buddah.
		261	A Spearhead hydraulic arm attaching P.T.O driven 6' cut Pasture Topper having twin rotors, 80" wide overall.
		262	A garden gas Patio heater 'Quick Heat'.
		263	A Black & Decker workmate
		264	Two swivel salon chairs.
		265	A metal plant stand.
		266	A garden bench with Cast Iron bench ends and back. 49 1/2" wide x 30" high.
		267	A large low table, 49 1/2" wide x 26" high.

268	A toolbox containing large stilsons, bolster chisels, lump hammer, combination spanners etc.		96" long.
269	A Husqvarna strimmer (engine doesn't turn)	299	42 lengths of softwood timber 3" x 1" x 45" long.
271	A large bag of softwood blocks.	300	42 lengths of softwood timber 3" x 1" x 47" long.
272	A large bag of softwood blocks.		
273	A large bag of softwood blocks.	301	42 lengths of softwood timber 3" x 1" x 47" long.
274	Eight small bags of softwood off cuts.		
275	Two glazed hardwood doors. 22 1/2" x 78".	302	Two Glulam Beams 12" x 6" x 53" long.
276	40 lengths of tanalised timber 3" x 2" and 4" x 2" x 47" long.	303	Eleven lengths of Cedar timber 4 1/2" x 3" x 45" long.
277	Three lengths of Oak timber 8 1/2" x 3 1/2" x 36" long.	304	Eight lengths of Cedar timber 8 1/2" x 4" , 3 @ 54 1/2" long , 5 @ 68" long.
278	Three lengths of Oak timber 5" x 3" x 65" long.	305	14 lengths of tanalised battens
279	Three lengths of Oak timber 5" x 3" x 54" long.	306	30 lengths of tanalised softwood timber 3" x 1" x 47" long.
280	Three lengths of Oak timber 5" x 3" ,1 @ 60" long and 2 @ 70" long.	307	A quantity of tanalised capping timber in assorted lengths.
281	Three lengths of Oak timber. 1 @ 8 1/2" x 3" x 58" long, 1 @ 9" x 3" x 56" long, 1 @ 8" x 3" x 68" long.	308	Two x 5" x 3" softwood Posts, and eight x 6" x 1" softwood boards 76" long.
282	Six lengths of Oak timber 5" x 3" x 35" to 45" long.	309	18 lengths of tanalised softwood 2" x 1 1/2" average length 108" long.
283	A length of Oak Rough Cut timber board 18" wide x 126" long.	310	20 lengths of tanalised battens 2" x 1" x 154" long.
284	A length of Oak Rough Cut timber board 17 1/2" wide x 126" long.	311	20 lengths of tanalised battens 2" x 1" x 154" long.
285	A length of Oak Rough Cut timber 18" wide x 126" long.	312	Ten lengths of tanalised ship lap timber 189" long.
286	A length of Oak Rough Cut timber 15" wide x 126" long.	313	Ten lengths of 6" tanalised ship lap timber 189" long.
287	A length of Oak Rough Cut timber 15" wide x 126" long.	314	Ten lengths of tanalised ship lap timber 189" long.
288	A length of Oak Rough Cut timber 12" wide x 126" long.	315	Ten lengths of 6" tanalised ship lap timber 189" long.
289	A length of Oak timber 6 1/2" x 2 1/2" x 75" long.	316	Ten lengths of 6" tanalised ship lap timber 189" long.
290	Seven lengths of Cedar timber 4 @ 6" x 3/4", 3 @ 8" x 1 1/2", all @ 142" long.	317	11 lengths of 6" tanalised ship lap timber 142" long.
291	Ten lengths of Cedar timber 6" x 1" x 143" long.	318	Ten lengths of 6" tanalised ship lap timber 142" long.
292	Ten lengths of Cedar timber 6" x 1" x 142" long.	319	35 lengths of softwood battens average 102" long.
293	Eleven lengths of Cedar timber 6" x 1" x 142" long.	320	Ten lengths of 6" tanalised ship lap timber 142" long.
294	Ten lengths of Cedar timber 6" x 1" x 142" long.	321	Ten lengths of 6" tanalised ship lap 142" long.
295	Ten lengths of Cedar timber 6" x 1" x 142" long.	322	Ten lengths of 6" tanalised ship lap timber 142" long.
296	Four lengths of Cedar timber 9" x 1" x 96" long.	323	20 lengths of tanalised battens 2" x 1" x 142" long.
297	Eight lengths of softwood timber 2 @ 3" x 1", 4 @ 4" x 1" and 2 @ 5" x 1" all 96" long.	324	50 lengths of 2" x 1/2" softwood battens x 102" long.
298	Eleven lengths of softwood timber 7 @ 4" x 2" , 2 @ 2" x 2" , 1 @ 6" x 2" , 1 @ 8" x 2" all	325	50 lengths of softwood battens 2" x 1/2" x 102" long.

325	A	Nine lengths of 5" tongue and groove tanalised timber 189" long.	357	A quantity of racking and shelving. Industrial, 2 ends, 6 beams and 9 pallet shelves.
325	B	One tanalised board 4" x 2" x 189" long, and three more boards 6" x 1" x 189" long and 2 @ 142" long.	358	Vintage windscreen, mudguards and a dash.
325	C	14 lengths of ship lap 6" x 1" x 189" long.[ no holes or seconds.]	359	A propagation unit.
326		A small car trailer light weight aluminium - 43" x 2' x 22" high sides, 408 wheels/tyres.	360	A quantity of plastic crates.
327		A two wheel Exercise Cart for small pony.	361	A cockerel, fibre glass & brass coal bucket.
328		Three Wheels & tyres, rims R15, 4 x 4.	362	A Black & Decker Workmate.
329		Four Wheels and tyres, plus two tyres R14-185.	363	An Oak potboard Welsh dresser, on turned legs and having three frieze drawers and three subsidiary drawers below and with fretworked corner features, complete with the original plate rack, 86" wide x 83" high overall, base 31" high, the rack 52", for restoration.
330		A quantity of plastic storage containers.	364	A metal shelf unit with seven shelves, 26" wide x 14" deep x 62" high.
331		A 4x4 tyre 245/16.	365	Four white plastic chairs and three green plastic chairs.
332		Three composters and a water butt.	366	A stone garden roller 37" wide with Blacksmith made frame.
333		A plastic water butt, a metal drum 205 litre, plastic planters etc.	367	A 'Wolseley Merrytiller' Rotavator with Briggs & Stratton 4 stroke engine with spare tiller feet.
334		Garden tools, nail bar, spirit level, Spear Jackson garden sprayer, plastic container, wire etc.	368	A 'Wolseley Merrytiller' Rotavator with Briggs & Stratton 4 stroke engine (no spare tiller feet).
335		Sterling board, hose and reel.	369	A quantity of Rotavator spare parts.
336		Two large and one small strawberry planters.	370	Six small bags of parquet flooring.
337		A work bench stand, hose & reel and a lounge.	371	A quantity of clay pots, various sizes.
338		Three clay pipes, 10 1/2" diameter x 12" deep.	372	A glazed pot with a large conifer.
339		A quantity of plant trolleys.	373	A Belfast sink.
340		A Balmoral pot stand, bamboo arching and a lawn ailer	374	A wire and metal planter on a stand, possibly originally a child's cradle.
341		A trap - rabbit.	375	An axe, sledge hammer, clothes ailer, brush etc.
342		A pigeon hole unit 18 holes, 6' x 18" x 3' high.	376	A metal road sign, 51" x 35". ***V.A.T. will be added to the hammer price of this lot.
343		Mobility seat and walking aid.	377	A square brown glazed planter, 14" square, 12" deep, planted with a horse chestnut.
344		Two metal and wooden shelf units.	378	A circular glass topped table, 2' diameter x 28" high and a single chair.
345		Two water butts, one with tap.	379	A Mercury 50 hp electric start three cylinder, two stroke petrol engined outboard motor and transom bracket.(engine turns and appears to have good compression). Serial No. 933834.
346		Two fibre glass planters with a rose and Clematis.	380	A Suzuki DT 16 hp outboard Motor twin cylinder, two stroke petrol and transom bracket, (does not currently turn). Serial No. 1602-001339.
347		A heavy duty blacksmith-made Gate, 42" wide x 53" high.	381	Five exercise gym chairs a/f.
348		A corner concrete planter and a sundial top.	382	A 663 battery.
349		A blue glazed planter with shrub, 17" x 10" deep.	383	Two lorry batteries.
350		A rose in a plastic planter.	384	Two light commercial batteries.
351		A builders bag of softwood blocks.		
352		A builders bag of softwood blocks.		
353		A large blue glazed planter 20" diameter x 13" deep, with Hosta.		
354		A cream coloured planter with Hosta, 15" high.		
355		A planter with Hosta - 12" high, with saucer.		
356		A plastic planter with variegated Hosta 14 1/2" high.		



385	Gym equipment a/f, garden kneeler, wave boards etc.	427	A long arm hedge trimmer McCullock (good compression).
386	A quantity of gym equipment a/f.	428	An 'Einsell' strimmer with bump feed 'turns' with safety equipment and brushcutter blade. ***
387	A large roll of lay flat hose.		
388	A petrol driven pressure washer with four stroke engine (engine turns ok).	429	A 'Titan' strimmer with bump feed (good compression).
401	A Beko fridge (sold as seen).	430	A Stihl pole saw.
402	A workshop air compressor (SOLD as SEEN - Not working)	431	A floor fan.
403	Three boxes of balance scales, and Panasonic speakers, 240v electric drill, battery charger.	432	A dual purpose (no gas) Clarke Welder, mask, etc.
403 A	A box of hammers, and trowels.	432 A	A K'archer Pressure washer (no lance present). SOLD as SEEN - not working.
404	A Lincat stainless steel oven warmer.	432 B	A Vax Hoover.
405	A gas BBQ.	432 C	Miscellaneous tools including wheel spider, staple guns, horse bit, castors, etc.
406	A Bush under-counter fridge, (new plug required).	432 D	A Garden Vac.
407	A Vermatik pest control.	432 E	A Challenge Garden Vac.
408	Quantity of light bulbs, mixed large and small.	432 F	A Handy Garden Vacuum.
409	A pine wine rack (16 bottles) and two bar stools.	432 G	A Cougar pressure washer.
410	An elegant old chair for restoration, with horse hair.	432 H	A Hitachi rip Saw, SOLD as SEEN (not working).
411	A Freshline upright fridge with top freezer box, 4' high.	433	An eFco strimmer (good compression).
412	A flat pack football table.	434	A Ryobi strimmer (as new) with brush cutter.
413	A pine TV stand and a pine table 23" x 44 1/2" and two benches and a canvas shoe holder.	435	A Stihl strimmer with bump feed, good compression.
414	Towels, a pet bed, dog harnesses, etc.	436	A 'Toro' strimmer (good compression) and another strimmer for spares and repairs.
415	A 'Hilti' reciprocating saw 110 volt, a 110 volt 'Metabo' 4 1/2" angle grinder and a 240 volt angle grinder, no plug.	437	An Emak Strimmer (good compression).
416	Dust sheets, PVA bonding, turps, wire stripper, ear defenders and paint.	438	A Stihl Strimmer (no head, good compression) filter housing missing.
417	A Kawasaki strimmer, (no strimmer head) - engine turns.	439	A set of four 19th c. Rosewood and other woods Dining chairs having Rexine type over-stuffed seats and standing on turned and fluted front legs.
418	An old radio receiver, probably ex-military, (display purposes only).	440	Three kitchen chairs.
419	A long armed 'Trueshopping' hedge trimmer (good compression).	441	A small wheeled fold up mobility chair with foot rest.
420	A garden vac and a cordless strimmer, no battery.	442	A Husqvarna chainsaw (no pull cord or safety brake - for spares and repairs). A XXX tools chainsaw with chain brake, 17" cutter bars.
421	An electric weed burner, cordless strimmer (no charger) bump feet, a Bosch cordless, (no strimmer head or battery).	443	A garden blower (good compression), and a McCulloch garden hedge trimmer (good compression).
422	A lazy tong pop Riveter, Carpenter's Bench vice and a hand operated grindstone ONLY.	444	A Ryobi long arm hedge cutter.
422 A	A 110 volt Transformer and leads, etc.	445	A Flymo garden blower and Vac.
423	An Epso XP-255 Printer/scanner.	446	A Ryobi chainsaw, 16" cutter bar, chain brake working.
424	A Bosch 240 volt garden Vac.	447	A Stihl blower (good compression).
425	Two brass table lamps and three standard lamps with shades.	448	A Stihl ISI70 Chainsaw with 12" cutter bar.
426	A pair of Hames, two stirrups and a bit.	449	A Husqvarna 120 Chainsaw 12" cutter bar, chain brake, good compression.
		450	A trolley jack, worked at time of lotting.

451	A Flymo blower (bag missing).	483	A wooden box containing various tools, pipe pliers, copper pipe molegrips, etc.
452	Petrol Homelite Chainsaw HY3800 14" cutter bar, chain brake, good compression.	484	An orange Le Crueset casserole pot and lid.
453	A Multi Saw.	485	Two ceiling fans and light shade.
454	A Power Craft 5.5 HP Generator (engine turns).	486	Gents trousers, leather jacket, suit cover, BBQ grill, coffee machine, etc.
455	An Ikea chair and foot rest.	487	A box of miscellaneous including extension lead, etc.
456	A set of four Mahogany framed dining Chairs and a pair of Edwardian Mahogany framed dining Chairs, all with turned front legs and maroon upholstered over-stuffed seats.	488	Desk lamps, answering system and miscellaneous.
457	A Black & Decker Sander-decor-mate, a cased extreme jigsaw, a Bosch 9v cordless drill cased. **	489	A quantity of Molton Brown toiletries.
458	Brass stair rods.	490	A box of mixed handbags, scarfs, etc.
459	A 'Uten' Air Fryer.	491	Children's games, Lego, shoe stretchers, teddy bear, dolls, etc.
460	An Aero Seed fiddle.	492	A set of six burgundy red upholstered dining chairs.
461	Two bread crocks and a herb chopper.	493	Three odd dining chairs.
462	A box containing electric soldering gun, door bell, ceiling light, mirrored lamp, etc.	494	A quantity of string art pictures and tryptic mirror.
463	Old telephones, light bulbs and Alba exterior lamps.	495	Two oil filled lamps.
464	Three Russell Hobbs coffee machines, (one as new).	496	An Emotion HD TV, 23" screen, (no remote or power lead).
465	Two boxes of miscellaneous.	497	Three pairs of lightweight boots, size 49 - 13 1/2.
466	An enamel bread bin and brass candlesticks, teaspoons, sugar tongs etc.	498	A quantity of mixed prints.
467	Miscellaneous cycling clothing, shoes size 39 'Shimano', waterproofs, spare pedals, pump, etc. **	499	A shooting stick.
468	A shower seat.	500	A box of LP's and a box 45 rpm records including The Beatles, Status Quo, etc.
469	Diving equipment, snorkel, camera lens, diffusers etc.	501	A box of LP's and a box of 45 rpm records including The Shadows, Paul Simon, Bonnie Tyler, etc.
470	Allen key set, small tool box, nuts and bolts, etc.	502	A quantity of commemorative items, CD's, etc.
471	Quantity of cushions, bags, slippers, etc.	503	An Ice cream maker, screw leg table, tapes including Pink Floyd, books, etc.
472	A stainless steel Salmon kettle plus stainless steel case and contents.	504	A box of cookery books, hair curlers, phones, electric sockets, etc.
473	A box of work gloves, coffee grinder, door handles, etc.	505	A camping chair, mirrors and four waste paper baskets.
474	A note/postcard board.	506	Two dining chairs.
475	Two loungers with dark green cushions	507	A wicker chair.
476	A set of four Queen Anne style dining chairs.	508	A Salter mini-Oven.
477	Four dining chairs.	509	A fireside companion set, dolls, tea figures, teddy bear, etc.
478	A tray of jack planes, draw planes and wood working tools.	510	A folding two tier Tea Trolley.
479	A large black leather Saddle with girth and stirrups.	511	A large "Famous Grouse" whisky bottle, royal memorabilia, oil lamp, etc.
480	Harrods lager, Croft original Sherry, mixed bottles, etc.	512	A Shredder and a Laminator, boxed.
481	Two artist's easels.	513	A box of mixed china.
482	A Mira shower unit, bath rail and weighing scales.	514	A pair of single bed heads.
		515	A hockey stick, vintage umbrella, fishing rods, etc.
		516	A nest of tables with leather tops and glass protectors.

517	A Fortnum & Mason picnic basket and a faux leather stationery case.	548	A cast iron boot scraper.
518	A modern lightwood Sideboard with central flight of three drawers and glass fronted cabinets on either side, 59" long x 32" high x 18" deep.	549	Two table lamps and a wash board and a plastic two tier table with metal legs.
519	A cross-banded Oak Corner Cupboard, 35" high x 29" wide.	550	A crate of cast iron items including fire front, old hammer heads etc. ***V.A.T. will be added to the hammer price of this lot.
520	A chrome base bar stool.	551	Two boxes of assorted spanners, 1/2 drive socket set, adjustable spanners etc.
521	A swivel stool on castors.	552	A brass blow lamp, staple gun, drain cleaner, shoe last etc.
522	Two draughtsman boards.	553	Two plastic tool trays, combination spanners, 3/8th drive sockets, 1/2" drive sockets etc.
523	A print and two modern mirrors.	554	A box containing 3" wheel castors, (2 fixed, 2 swivel), spray gun, oil gun, tyre inflator, pliers, etc.
524	A mahogany bureau with two drawers to base, 30" wide x 18" deep x 40 1/2" high.	555	A box of a large quantity of grass shears.
525	A brass/copper bed warmer.	556	A trailer light board.
526	A large mirror with wooden frame, 25" wide x 29 1/2".	557	A pot stand and a box with lid etc.
527	A pine child's cot, mattress, etc.	558	Stationery shelving and a small child's desk.
528	A Gents wardrobe, 3' wide x 64" high x 18" deep and a ladies wardrobe, 4' wide x 6' high x 22 1/2" deep.	559	A guillotine 'Masseley'.
529	Cooking pans in two boxes, cake tins, bun tins etc.	560	A mountain buggy.
530	A pine cupboard with top drawer and two bedside tables.	561	A quantity of bags and shoes.
531	A small fold up table and some ceiling lights.	562	A British Airways bag, Tap and die set, a framed tapestry set, etc.
532	Fishing rods x 4 and a map of the world.	563	Air conditioning unit, arc welder etc.
533	Three small marble topped tables; 2 x circular, 1 square.	564	A cricket bat, lantern etc.
534	A modern bow fronted sideboard, 61 1/2" x 34" x 18" deep.	565	A 240 volt lawn mower with grass box.
535	A portable bug zapper plus a 18 piece wooden handle barbecue set and ten night lights.	566	A vintage Hobart coffee grinder in red.
536	A chrome based adjustable bar stool.	567	A log basket and a piano stool.
537	A two tier tea trolley on castors.	568	A 21 smart toy buggy car.
538	A display cabinet plus a large dressing table with mirror and an oak chest of drawers.	569	Chainsaw parts.
539	A 'Wilson' golf bag and a 'Howson' golf bag with clubs.	570	A quantity of linen including a quilted throw, embroidered door curtain, linen basket, etc.
540	An Aero Pilates Cardio workout machine and Pilates level 3 workout.	571	A Lloyd loom style Ottoman
541	A green painted chest of two short over two long drawers.	572	A large wicker linen basket with sheets, bedspread, pillows, bed throw etc.
542	A cased put you up Camp bed.	573	Two de-humidifiers, garden tools, etc.
543	A plate rack cupboard, 78 1/2" wide x 3' high x 14 1/2" deep. **	574	A carpenters tool box with saw, wooden mallet, draw knife etc.
544	A modern lightwood sideboard, 46" x 16" x 30" high, (central door needs attention).	575	A handbag, plates, wine rack, etc.
545	A mahogany finished bedside chest of three drawers.	576	A quantity of Carburetors, cylinder head, etc.
546	A pasting table, large teddy bear and a metal/plastic fold up chair.	577	A Lloyd Loom style Ottoman and bedside cabinet, bed linen, etc.
547	A steel framed bracket.	578	Disney VHS tapes, Botanical garden storage jars, Baylis & Harding set etc.
		579	Three bags of shoes, cushions, blankets, tins and kitchenware.
		580	Two Yankee Candle gift sets.
		581	A DVD player and Samsung VHS & DVD recorder.

582	Four boxes of miscellanea, china, oil amp, bathroom scales, lava lamp etc.	613	Three Christmas deer figures, storage jars, mugs and electric magnifying lamp.
583	A metal trunk.	614	Two boxes of china, jardiniere and stands etc.
584	An Elm blanket chest.	615	A box of kitchenware, jugs, microwave, pressure cooker, etc.
585	A box of miscellaneous, draught door snakes, 'Lock & Lock' boxes, recorder, etc.	616	Two boxes of kitchenware.
586	A box of 'Walt Disney Parade' books, encyclopaedias, metal box, 4 piece metal tea set etc.	617	Three boxes of CD's and two lights.
587	A bag of books and a bag of LP's, etc	618	A CD cabinet full of CD's.
588	Three luggage cases, one being 'Samsonite'.	619	A Hi Vis orange jacket XXX large size.
589	Two boxes of miscellanea, including 'Swan' mini chopper, small fan, fridge deodorizer etc.	620	A box of mixed china, trays etc.
590	Pasting table and a 'Steam Bee' steam cleaner.	621	Three pneumatic air drills, pneumatic Bosch jigsaw, a high tensile metal drill bit - size 26mm, PC2 air line coupling with green Benedictine bottle.
591	A large quantity of Christmas decorations.	622	A painted drop leaf table with barley twist legs, 2' x 13 1/2" closed, 12" extensions x 28 1/2" high.
592	A crochet blanket, bedding sheets, hand gels, plastic storage containers, etc.	623	Two boxes of china, china ornaments, Country Artist pigs etc.
593	Flood lights and halogen sensor.	624	A Rucksack, terracotta jug and ostrich egg etc.
594	A four slice Hinhri Toaster, boxed and unused.	625	A small box of mugs, butter dish, Sylvac vase etc.
595	A quantity of toiletries, basket, etc.	626	A quantity of 'Eternal Bow' dinner and tea service.
596	A large quantity of lidded Kilner Jars and others.	627	Film projectors, 'Eumig' camera, etc. and a 'G2S3' compact video camera, cased.
597	A Holcroft No. 3 two pint Cast iron Pot, old 1 lb. weights, etc.	628	Three boxes including bake stone, cast door stop, 2 vintage suitcases, brass table lamp, Barometer.
598	A Kodak tripod.	629	A quantity of wicker trays and plant stand.
599	A quantity of candles, stands, holders, scarves, etc.	630	A large quantity of Christmas figures, teddies, etc.
600	A 12 volt "Driver" cordless Drill, lights, fuel can, etc.	631	An enamel colander, teaset and a Russ large teddy.
601	A three drawer storage unit on wheels.	632	A quantity of laboratory equipment.
602	A box of mixed cuddly toys, 18th birthday celebrations etc.	633	Two boxes of china, vases, teapots, jardiniere etc.
603	Four 5 litre containers of Spear & Jackson spray & leave liquid (as new)	634	A box of Disney 101 Dalmation toys, nest of three tables, stone parrot, etc.
604	A box of china and a box of glass and 2 leather carriers.	635	Two boxes of china, commemorative, tea ware etc.
605	A box of games, Fisher Price toy farm, card making etc, a box of cushions, pillow/duvet etc.	636	Four boxes of miscellanea, books, radio, heater.
606	A quantity of Christmas decorations.	637	A six bottle wicker carrier and a pair of curtains, 66" wide x 72" drop.
607	Four boxes of CD's, and box of electrical cable and chargers, etc.	638	Mixed china, glass and a DeWalt electric drill, storage jars etc.
608	A pogo stick, 'Home Medics' foot tapper, hair dryer, bath sponges etc.	639	Two boxes of misc, iron, antler case, table lamps, etc.
609	A yoghurt maker, a soda stream, CD's etc.	640	Plant posters, figurines etc.
610	A quantity of LP's including Meat Loaf, Elvis, Wet Wet Wet, etc. plus quantity of DVD's.	641	Three boxes of misc, storage jars, tins, shoe horn etc.
611	A Rotary Desiccant Dehumidifier DEHUM 3 with instructions.		
612	A tall vase, place mats and glasses.		

642	Place mats, spray bottle, multi box photo frame etc.	678	Two black stickback chairs.
643	Cameras, etc, camcorder etc.	679	Oreck XL Hoover and attachments plus a quantity of bags.
644	Two boxes glass, misc. china, Staffordshire flat back etc.	680	Two boxed adjustable multi purpose raisers for chairs, 4 in total.
645	Two angle poise lamps, etc.	681	A quantity of clock parts, ratchet straps etc.
646	Pair of 'the Viking' weighing scales, glasses, binoculars, Staffordshire greyhounds a/f, etc.		
647	Spear and Jackson patio spray, solar lights, water bulbs etc.	701	A set of teak bookshelves.
648	A micro chip cat flap, a Staywell pet door, stainless steel bowls.	702	A Seal Turntable AM/FM Radio with CD player.
649	Wall fixing large mirror, 42" w x 28" h.	703	A box of Walkie Talkies.
650	A large jug, cruet set etc.	704	A wicker tray, basket and waste paper bin.
651	Rock solar lights, cordless secateurs, paint roller etc.	705	A "Starfire" Amplifier TEC 10E lead.
652	A box of bags, books, xmas lights etc.	706	A Sony CD Radio Cassette Corer.
653	Trespass fleeces, Regatta, quilted jackets, waterproof coats, etc in two bags.	707	A pair of Bookshelves with drawer.
654	Three boxes of miscellanea; popcorn maker, air purifier, yoghurt maker etc.	708	A wicker basket and two lampshades.
655	Vacuum bags, travel iron, Lock-vac boxes, toaster, barometer.	709	Two Mahogany hall tables with three drawers.
656	A child's wicker crib.	710	A Pine Sideboard with three frieze drawers over four long drawers, 60" long x 28" high.
657	Shoes including 'Reiker' size 4, 'Gabor, 'Sketchers', linen etc.	711	A light Oak finished wardrobe.
658	Cycling helmets, craft items, UV nail lamp etc.	712	A light Oak finished matching Dressing table, to previous lot.
659	Wash jug and basin, soap dish by Doulton Burslem, oriental figures etc.	713	A light Oak finished wardrobe.
660	A Highlands wall clock plus another.	714	A quantity of LP records including Diana Ross, Abba etc.
661	Aero garden kit.	715	An upholstered stool
662	A box of tools, Wagner spray gun, drain buster, etc.	716	A quantity of ladies jackets, cardigan, etc.
663	A stirrup pump, model ships, magic lantern slides, etc.	717	Ladies jackets and scarves, "Elegance", size 14 & 18.
664	Two boxes of studio pottery, old phone, printing block.	718	Ladies coats & jackets (one with tags), size 16-18.
665	Brass topped Benares table and black portfolio case.	719	TT leathers Motorcycle Jacket, size 44 and a leather bomber jacket.
666	A bar stool.	720	Four Bethterrell, Denis Basso rain jackets.
667	A gold painted Lloyd Loom style chair.	721	A pine framed bevel plated Overmantel, gilt framed circular mirror and a silver jubilee pub style mirror.
668	A 'Paris' three section extension pole.	722	A ladies purple suede jacket 'M', Phase Eight jacket size 12, two shopping bags etc.
669	A pine hall table with drawer.	723	A quantity of Gents clothing including Next & John Collier jackets, waistcoat 40R and trousers 38R.
670	A dartboard, fold away foot spa, steam cleaning kit.	724	A John Collier suit.
671	Two boxes of china, part tea set.	725	Two mirrors, one being a carved wood frame.
672	Two tables.	726	A brass fire screen.
673	Garden tools, bow saws, loppers etc.	727	A three fold, four panel screen, 66" high.
674	A coffee table with lower shelf.	728	Three gilt framed mirrors.
675	A Lloyd Loom style commode.	729	A quantity of Duvets.
676	Two stools and a table.	730	A bespoke two seater settee, standing on turned feet.
677	A bakestone, paints, wine rack, cleaning products etc.	731	Two Oak single beds with slats.

## **BRIC-A-BRAC (INSIDE LOTS)**

732	A vintage Rexine upholstered armchair.	769	An Oak Art Nouveau mirror topped sideboard, 60" wide x 23 1/2" deep x 74 3/4" high.
733	A corner cupboard, 69" high x 34" wide.		
734	A quantity of 'Pirelli' calendars.	770	A large Pine chest of of four long and two short drawers flanked by five short drawers, 47 1/2" wide x 16 1/2" deep x 42" high.
735	A quantity of 'Tiger Tank' magazines and model kits etc.	771	A Pine corner Cupboard, three drawers over cupboard**, 35" high x 3' wide.
736	A double bed base and mattress.	772	A most substantial Oak Dining Table, with one piece top, 10' long x 48" wide x 31" high.
737	Wall art and three prints.	773	A set of 4 brown faux leather dining chairs.
738	A metal coat stand.	774	A set of four brown faux leather dining chairs with ladder backs.
739	A Hotpoint fridge freezer, 69" high.	775	A wicker crib, linen and mattress.
740	An under counter freezer, three drawers.	776	A fabric embroidered fire screen.
741	An Indesit fridge freezer.	777	A 31" Panasonic TV with remote.
742	A Hotpoint slimline dishwasher (eight place setting).	778	A small 18" TV with built in DVD player.
743	A Vax power 8 vacuum with attachments.	779	A Sky+ HD box with remote.
744	A Whirlpool American style fridge.	780	A wooden set of board games, wicker basket, plastic drawers etc.
745	A framed decoupage picture.	781	A cane seated armchair.
746	A 'Van Gogh' print and a sepia photograph of landscape with billowing clouds.	782	A nest of three leather topped tables
747	A quantity of mirrors, pub type mirror.	783	Nest of three tables.
748	A contemporary Grandfather clock, 75" high approx.	784	A double sheepskin rug and a faux sheepskin rug.
749	A wooden standard lamp with shade.	785	A Humax freeview and HD box.
750	An Electrolux 1600 watt vacuum cleaner.	786	Classical LPs "Duke Ellington", Musicals, Brass and Jazz etc
751	Children's books and a print of 9-11 heroes.	787	A pair of Country Oak stick back chairs
752	A BT handset and Binatone four piece phone set.	788	Two pairs of Ladies shoes size uk 8.
753	A glass fronted display cabinet, 41" wide x 46" high x 11 1/2" deep.	789	Ladies hats, place mats etc.
754	A small hall table and bamboo style pouffee/stool. **.	790	A Yamaha Music centre with speakers and a Compact disc player.
755	A 'Kraco' mobile two band walkie talkie/CB 40 channel radio.	791	Two jardiniere and stands with two carrying bags.
756	A large mirrored backed Sideboard, 63 1/2" wide x 22" deep x 7' high.	792	An old oak cased wind-up Gramophone with records.
757	Two wicker stools.	793	An Oak Chapel style chair.
758	A blue Chinese style rug, 47" x 72".	794	A "Denon" music centre, Hi Fi separates, Radio, CD, mini disc, amplifier etc.
759	A walnut finished, glass fronted display cabinet, 27 1/2" wide x 12" deep x 43" high.	795	A Nintendo DS with games, Super Mario.
760	Oil filled radiator.	796	A nest of three teak framed tables having a tiled top.
761	An Oak glazed bookshelf with lower cabinet, 3' wide x 70" high x 12" deep.	797	A nest of three pine tables.
762	A small Pine Dresser, 38" wide x 16" deep x 73" high.	798	A box of Ladies handbags, boxed purses some by" Tommy & Kate"
763	A quantity of games including Subbuteo, coppit etc.	799	An Oak nest of three tables.
764	A pair of Rexine seated Mahogany side chairs.	800	Telephones and chargers.
765	A 'Giant Prime' electric bike with handbook and charger.	801	A small circular table.
766	A frameless bevelled bathroom mirror with fixing holes, 48" x 25".	802	A Victorian Mahogany extending/wind-out Dining Table on castors, 55" x 41" x 27 1/2" high.
767	A triple wardrobe with two lower drawers, 59" wide x 21" deep x 80" high.	803	A nursing chair.
768	A Hitachi 50" 4k smart TV with remote (SOLD as SEEN - Faulty Screen).	804	A blue office/typists chair.

805	A box of knitted hats and scarves.	838	A quantity of 'Re-born' baby dolls.
806	A coffee table with a drawer 43" wide x 20" deep x 19" high.	839	Three lamp shades.
807	A tiled wash back 34 1/2" wide x 16 1/2" high.	840	A glass topped Teak coffee table.
808	A Mahogany nest of three tables.	841	An Oak sideboard, 4' wide x 20" depth x 35 1/2" high.
809	A tiled top coffee table with removable legs.	842	A baby crib on a metal stand.
810	A hardwood torchere.	843	A three drawer mixed woods coffee table, 50" wide x 2' depth x 19" high.
811	An Oak nest of three tables.	844	A dining table - extending and 6 chairs, closed 28" x 45" x 29", opens to 69".
812	A 'Nathan' Teak occasional table.	845	An Oak Court Cupboard design sideboard, 50" wide x 19" depth x 56" high.
813	A quantity of LP's including 'Status Quo' and three oriental pictures.	846	A leather seated stool and a small dropleaf swivel table and a nest of three tables.
814	A small embroidered top stool and a lamp base.	847	An Oak linen folds drinks cabinet, 31 1/2" wide x 19" deep x 4' high.
815	Auto Glym car cleaning sets, one being original mini set.	848	A cream coloured upholstered swivel office chair.
816	A Beech framed kidney shaped stool for re-upholstery.	849	A white painted wall shelf unit having four scalloped edge shelves.
817	Three baskets.	850	Two carpet runners 67 x 300cm both by Flair Sincerity.
818	A TV cabinet.	851	A light woodgrain chest of two short over three long drawers by Alston Furniture, Ipswich 30" wide x 16" deep x 41" high.
819	An Oak lounge unit with shelves and cupboard, loose top 3' wide x 17 1/2" deep x 76" high.	852	Four kitchen stick back chairs.
820	An Oak lounge unit with glazed top, 3' wide x 17 1/4" deep x 76" high.	853	A pine shelf unit having six shelves, 32" wide x 11" deep x 69" high.
821	An Oak bookshelf matching previous large unit, 33" wide x 10" deep x 40 1/2" high.	854	A Mahogany Pembroke table, standing on tapering square legs with brass castors, with drawer, 28" x 30" x 29" high.
822	A Mahogany and Walnut revolving bookcase.	855	A Teak record cabinet.
823	Children's building bricks.	856	A circular Mahogany table, 29 1/2" diameter x 27" high.
824	A box of telephones.	857	A 'Maple & Co' - Challen 988 iron framed overstrung 6 1/2 octave upright Piano.
825	An Oak sideboard, 4' wide x 19 1/2" deep x 3' high.	858	A cream electric reclining Armchair.
826	A box of mixed handbags, some real leather.	859	A floor standing oval cheval mirror.
827	An eastern hardwood TV cabinet and a small eastern occasional table.	860	Four old wooden crates with trade names. ***V.A.T. will be added to the hammer price of this lot.
828	A Satinwood pot cupboard.	861	A pine drop leaf table with four chairs 31" x 30" high, 9" extension, closed 22".
829	Two small Yewwood finished cabinets filled with CD's and books.	862	A quantity of prints and paintings etc.
830	An oak sideboard with two frieze drawers and cupboard under 48" x 18" x 27" high.** owner	863	A quantity of old tins.
831	A pine writing pedestal desk, each with four drawers, frieze drawer, brass drop handles, 48" x 36" x 30 1/2" high.	864	A pair of Oak Bedside Cabinets.
832	An Oak glass fronted floor standing display cabinet, 3' wide x 39" high x 11" depth.	865	A Chinese green pattern rug, 30" x 61".
833	An Oak framed piano stool.	866	A Mahogany framed leather glass topped coffee table.
834	A Matsui VHS player, a Logic DVD, CD and MP3 player and a quantity of remotes.	867	A quantity of Reborn monkey dolls.
835	A small Mahogany occasional table on wheels and TV unit.	868	An Oak extending table, 64" x 29 1/2" x 30" high, open.
836	A 'Seiko' wall clock.	869	A small Oak table.
837	Old tins, 'John Player', 'Tea time' etc.	870	Teddies and a baby monkey 'Ashton Drake' doll.

871	An Oak narrow display cabinet, 36 1/2" wide x 16" deep x 40" high.		C425.
872	A three drawer upright pine drawer unit 36 1/2" high x 40 1/2" square top.	899	A six string Acoustic Guitar, Ibanez.
873	A Pine wine table having an engraved owl to the top.	900	A Sony flat screen TV model, "KDL-46 ex 73" with remote.
874	An extendable table, open 66" x 33" x 30" high, closed 41" x 33" x 30" high.	901	A drawleaf Oak Dining Table, 35 1/2" x 35 1/2" extending to 58 1/2" x 30" high.
875	A Mahogany side table with frieze drawer, 33" x 18 1/2" x 29" high.	902	A Hereford Bull (cuddly), Doll, china including Black & White Whisky barrel, shoe stretchers, carnival glass, etc.
876	A Pine Shelf unit, 33" wide x 10" deep x 71" high.	903	A quantity of trade wooden Boxes. ***V.A.T. will be added to the hammer price of this lot.
877	A Picnic hamper.	904	A modern framed Sofa upholstered in blue/green fabric.
878	A nest of three darkwood tables.	905	A Sony flat screen TV model "KD:L 32WD 754".
879	A brass coloured finish Swing Mirror, 18 1/4" high.	906	Tray of mixed books.
880	A tiled top Kitchen Table and pair of circular stools, 35 1/4" x 23 1/4" x 34" high.	907	A box of pictures and frames.
881	A Yew-wood CD Cabinet, 26" wide x 29 3/4" high x 10" deep.	908	Dimplex panel heater.
882	Brother LS14 electric sewing machine.	909	Dropleaf Oak gateleg Dining Table, 35 1/2" x 17 1/2" extending to 48" x 29 1/2" high.
883	A Piano key topped occasional table, 18 1/4" square x 24 3/4" high.	910	Two pictures on canvas.
884	A beige topped G-Plan style Stool, 17 1/2" high x 20" diameter.	911	Beatles Rock band game for PS 3.
885	A flap over semi-circular side Table, 35 1/2" x 17 5/8" extending to 35 1/2" x 30" high, together with a pair of ladder back matching chairs.	912	Cased Astrolan Telescope and tripod, etc.
886	A dark Oak Corner Cupboard with open shelves over, 28" wide x 72 1/2" high.	913	A bag of Wool and tin of crochet odds.
887	A dark Oak Sideboard, 57 1/2" x 20" x 35 1/2" high.	914	A drawleaf Oak finished top Table, 30" x 42" extending to 66" x 30 1/2" high.
888	A Spinning wheel.	915	Radion Programmable Video system and games.
889	A square Eastern hardwood Coffee Table on turned legs, 31 1/2" square x 16" high.	916	A large quantity of boxed hand-painted figures of Coronation Street characters by Swatkins.
890	A pair of cast iron based circular Mahogany seated Stools and cushions.	917	Oak single pedestal Desk with dropleaf to left hand side, 19 1/2" x 34" extending to 46" approx.
891	A good quantity of ladies Shoes, appear very little used/new, some size 4, 5, 6 1/2" etc.	918	An 8 mm Cine Camera - Jeko Automatic 8 and a Sony CD changer.
891 A	A puzzle Caddy.	919	A Satinwood finish Magazine rack Table with inset leather top.
892	A Ekornes Stressless type tan soft hide upholstered Lounge Suite comprising a two seater settee and one chair, in very presentable order. A current equivalent suite would likely cost several thousand pounds.	920	A dark Oak coffee table, 41 1/2" x 18" x 18 1/4" high.
893	A quantity of curtains and curtain fabric, floral pastel marked Tricia Guild.	921	A dropleaf dark Oak Coffee Table, 42" x 17" extending to 37" x 19" high approx.
894	Oak and Mahogany framed oval Mirrors.	922	An Oak Bar.
895	A quantity of tan/beige leather, two pieces.	923	A spiral wooden table lamp and a ridged bulbous body table lamp and five shades.
896	A striped green Dralon cushion Armchair.	924	An Oak Chest of three long and two short drawers, 36 1/2" x 19" x 33 1/2" high.
897	A quantity of pictures.	925	A Sony HDD DVD recorder "RDR,DC205" and Mission speakers.
898	A six string Acoustic Guitar, Prince model	926	A small folding table.
		927	A Mahogany bedside Cabinet, 23 1/4" x 16" x 32" high.
		928	A set of four blue cane dining chairs.



929	A quantity of boxed shoes and handbags, shoe sizes 5, including EMU Australia boots, Markon boots, etc. (appear almost new)	961	Box of books including Photography, Outline of Nature, Royal Academy pictures 1895, Those tremendous year 1919-1938, etc.
930	Tiled top nest of three tables.	962	Fisher Price tool kit and six full colour William Morris posters.
931	Small oak table, 15 1/2" x 29" x 31" high.	963	Two china figures.
932	Small Yew-wood Bureau, 20" wide x 19" deep x 37" high approx.	964	An Oak Sideboard.
933	A Cane conservatory Suite comprising two x two seater Settees, Armchair and oval glass topped Coffee table, a Pouffee and a circular glass topped table.	965	An Eastern hardwood Chest of four long and two short drawers.
934	Three framed pictures of foliage, a lady's corset and a wig.	966	A quantity of place mats and still life picture and spoon set.
935	A lightwood kitchen preparation Table with a dropleaf,	967	A low green footstool.
936	A bamboo bedside table with three drawers.	968	A framed Map of Minorca, 3d DVD San Andreas, picture frames, etc.
937	A pair of brass table lamps and shades.	969	A green upholstered wing Armchair.
938	A quantity of pictures and frames including Fritillary, Jim Clark, Ayrton Senna, etc.	970	A painted kitchen chair.
939	Toy train, monkey, Meercats, etc.	971	A chilled Patisserie Display Counter/Fridge by Mafinol, in good working order, 1.3 m x .95 m x 1.3 high approx. (trolley not included).
940	A box of pictures, frames, china, glass, etc.	972	A maroon ground Runner by Ardestan, 127" x 31 1/2" wide and an Ambassador maroon ground Wilton Rug, 53" x 28" approx.
941	Box of pictures, frames, china, glass, etc.	973	A box of plastic model railway including engine, a Spanish Bull and Matador and Biscuit Tin. ***V.A.T. will be added to the hammer price of this lot.
942	Child's rocking chair.		
943	Flat screen TV Samsung model T31D310EW with remote.		
944	A lightwood grain desk.		
945	Small Oak shelf unit and a cushion.		
946	A canvas wall hanging, colourful.		
947	A quantity of wooden Brio railway.		
948	A mirrored pair of Oak bedside cabinets on turned feet.		
949	A Sony stacking Stereo, remote and speakers.		
950	A small flat screen TV by Digihome with built-in DVD player, with remote.		
951	Six various wall mirrors.		
952	A quantity of pictures, prints and frames.		
953	A quantity of LP's and 45's.		
954	A flat screen TV Sony model KOL-32S 5500, with remote.		
955	A Sanyo video cassette recorder and remote.		
956	A flat screen TV, LG model 28 TK420S-PZ.		
957	A small Microwave and electric toaster.		
958	An Epson Stylus DX6050 printer/scanner and Surge Master by Belkin components, model F5C100U.		
959	A box of fabric including curtains with tie backs, needlework, etc.		
960	Picture Easel, tripod and box of cream/turquoise curtains.		

## **Saturday 4th May 9am**

### **MISCELLANEA**

1001	A Stephanie Darling Ivory Wedding dress with embellished and beaded bodice with short sleeves, size 22.
1002	A handmade vintage "Bo Peep" style Dress with rope-twist drop waist along with matching straw hat, size medium.
1003	A framed and mounted map of Herefordshire, 13 1/2" wide x 16 1/4" frame, actual map size 7 3/4" x 10 1/4".
1004	A quantity of miscellanea including Matchbox Corgi cars, marquetry picture, wall hanging, etc.
1005	A cased vintage Singer sewing machine.
1006	A large Taxidermy of a Pike by J. Cooper & Sons in a bow fronted display case marked 'Pike caught by Walter C. Smith, Lough Conn Ireland, Aug 25th 1904, Weight 29lbs'. Case in need of attention but front glass complete, 51 1/2" x 20" high.

1007	A gentleman's Leather Suitcase with silver topped jars (one jar missing but lid present), plus brushes, shaving stick, etc., with presentation plaque "Presented to Fred Sills by The Stewards of R.M.S. Cromtis, June 19th 1915", (case has wear and some damage).	1022	A quantity of pre-decimal and foreign coinage including; Cartwheel penny, silver 3d bits, Pesos, Dollars, Lira, etc. plus a small quantity of decimal coins including 12 sided 50p's.
1008	A quantity of miscellanea including, Stratton compacts, wooden box of embossing stamps, old family photos, Sony Walkman mini disc player and Walkman R202 cassette recorder, Geometry sets, drawing instruments, Psion series 3a, etc.	1023	A quantity of old Postcards and greeting cards including; vintage humorous, holiday, wedding, etc. plus First Day covers, Doncella Cigars card album, etc.
1009	Two sterling silver propelling pencils, 9ct gold pen body, rolled gold Parker propelling pencil plus one other unmarked chatelaine propelling pencil with polished stone top.	1024	A Stanley Gibbons Simplified Catalogue Stamps of the World 2002 edition - complete set of 4 volumes.
1010	A quantity of propelling pencils, ballpoint & fountain pens including Calibri, Osmiroid with Italic nibs, Goldring Excellent (a/f) plus spare Osmiroid nibs, etc.	1025	A blue Derwent spring back Stamp Album containing at least 900 different British stamps plus over 500 World stamps.
1011	A miner's/Davy Lamp marked 'S. Thomas & Williams Ltd Aberdare' no: 076.	1026	A blue lever Album with interleaves containing approximately 900 different British and World stamps.
1012	A quantity of miscellanea including; vintage magazines (Harpers Bazaar, Vogue, etc), a Metronome (a/f), statue plus plaque of Beethoven, Ansco Shur shot camera, etc.	1027	A brown 64 page stock book filled with Commonwealth stamps (approximately 3000).
1013	Two Great War medals for 'Pte C. Reynolds 18 Land R' and 'Spr G. Reynolds RE' (possible brothers), plus another service Medal for the former and a silver ARP badge.	1028	A green 48 page stock book with approximately 2000 King George V, King George VI, Queen Elizabeth II and Commonwealth stamps.
1014	A quantity of old coins including; Cartwheel penny and Sixpences, plus a quantity of Crowns, all in a box having Oriental design.	1029	Two 32 page stock books containing over 3000 World stamps.
1015	A large gilt framed mirror, 41" x 19 1/4".	1030	A blue 48 page stock book with approximately 2000 British, King George VI and Queen Elizabeth II stamps.
1016	A quantity of Brooke Bond and P.G. Tips tea card albums including Ships, Space, Wild Birds in Britain etc.	1031	Three Eminmar Chelsea spring back Stamp Albums with extensive collections of World stamps, mainly pre-1970.
1017	A case of loose stamps, mostly UK, some Spain etc.	1032	A small quantity of beaded coasters and place mats.
1018	A box of games to include; complete Chess set, Monopoly, Scrabble, etc. Plus two stainless steel goblets.	1033	A First World War peace mug, a Queen Victorian Golden Jubilee enamelled beaker, etc. Plus a quantity of greeting cards mainly from the early 20th Century and the 1920's.
1019	A quantity of old tins (some containing old Meccano pieces), a cigar box, Lyons tea caddy with perpetual calendar to the front, plus two lustre jugs.	1034	Ten antique domed Champleve buttons, possibly French.
1020	A quantity of collectors toy vehicles including; boxed sets of 2012 Olympics and Royal Mail sets plus key rings, Chicken Run phone card collection, etc.	1035	An Oliver Messel silk Jubilee scarf having coach and horse to the centre with various plants representing the British Isles to each corner, signature bottom right.
1021	A quantity of collectors toy vehicles including; London scene, Shell collectibles, Corgi 'Somerfield' lorry, etc.	1036	A "Paramount" Trombone, a/f.
		1037	An Antoni Debut Violin in soft case, 21" long, with box, some strings missing.
		1038	Two framed Indentures; one dated 1890 of a sketched plan of Salisbury Road, the other dated 1812 - largest frame 34" x 29 1/2".
		1039	A small writing box (a/f) and a brass Inclinator.
		1040	A 'Comitti & Son, London' stick barometer.

1041	A circular dial, single train movement Wall clock having Roman numerals, no pendulum or winder present, 13 1/2" diameter, the face being 9 1/2" diameter, the bezel 10 1/2" diameter.		doorstop, 10" long.
1042	A vintage Triang toy crane.		
1043	A Royal Coat of Arms 'Dieu et mon Droit' (God and my Right) - hand painted in fine detail, 27" high x 25" wide.	1057	A pair of late 19th c. still life paintings on glass, one of Hollyhocks, the other Sunflowers and Butterflies, both in probably original frames, 17" x 23" with indistinct monograms (both with hairline cracks).
1044	A Royal Coat of Arms 'Dieu et mon Droit' (God and my Right) heavy metal wall plaque, 23 1/4" high x 23" wide.	1058	A 19th c. circular aneroid barometer on oak mount (glass cracked), an Italian velvet jewellery box, a green box with mirror and an oval lacquered box.
1045	Four bottles including Calvados, Irish Meadow Liqueur, Ouzo and Dorset Ginger.	1059	A good quality Kingwood 19th c oval butlers Tray with brass handles, inlaid with ebony, 25" x 16 1/2".
1046	A Mahogany and satinwood cribbage board, 9 1/2" long. plus a complete boxed Chess set carved in the African taste, plus the games board, 15 1/2" x 15 1/2"	1060	An 18th c. Pole Screen, the mahogany tripod stand with carved harebell decoration and fluted pilaster gilt brass patterned pole surmounted by cast brass Fleur-de-lys shield shape screen probably original silk embroidery of roses and honeysuckle.
1047	A large Oak book trough, 19" long, plus mahogany Art Deco sewing box and contents, 9 1/2" long, plus a large carved Elephant, 10" tall.	1061	A fine quality 18th c. Serpentine fronted Mahogany Knife Box with fine satinwood inlay to edge and oval design to sloping lid. Old Sheffield plate shield and lock escutcheon, 14 1/2 tall, 10" deep x 9" wide (interior fittings absent).
1048	A large Art Nouveau Soutterware handmade copper Planter with engraved classical flower design and undulating edge stamp to base William Soutter, 7" tall x 10" diameter; an arts and crafts Hugh Wallis (1871 - 1943) hand crafted Copper Plate with floral design, 9" diameter and an arts and crafts copper and brass Casket, 4 1/4" long.	1062	A good quality Comitti of Holborn mahogany and satinwood inlay mercury Stick Barometer, the silvered face enclosed by a glass door surmounted by a broken arch pediment, 38" long.
1049	A Chinese 19th c. cast bronzed Vase of slant square shape, all over decoration of birds, foliage, trees and flowers, 6 1/4" tall.	1063	An early 20th century Benares brass top table with hammered design, on folding wooden base, 24" diameter.
1050	A 19th c. probably continental good cast bronze of a naked man on a round base, well modeled hair and features, 5 1/8" tall.	1064	A Vienna style Walnut and other woods wall Clock with Roman numerals, fluted columns, shell pediment, key present, strikes on gong, running at the time of lotting, 51 1/2" high x 7 1/4" deep x 17 5/8" wide.
1051	An Oriental cloisonne tortoise trinket box, 4 1/2" long, a cloisonne thimble and a soapstone elephant, 2" tall, two onyx eggs, a trinket dish on brass feet and a baluster onyx, 8" tall vase, chipped.	1065	A quantity of Elvis LP's including; Rock n Roll, Loving You, Flaming Star, The U.S Male, G.I. Blues and A Tribute to Elvis magazine, etc.
1052	An Eastern style table with eight hinged fretwork sides and round curved top, 18" tall, 18" diameter.	1066	A large quantity of LP's including; The Beatles, Replicas Tubeway Army, Depeche Mode Just Can't Get Enough, Joni Mitchell, Court & Spark, The Human League, Flash Gordon, etc.
1053	A large Fortnum and Masons hamper with lid, 22" long, 14" high.		
1054	An early 20th c. elaborate metal hand mirror, 13" long, a matching casket, fabric lined made by Regent London, 6" long and a swivel hand mirror pink back.	1067	A green canvas luggage case having brown leather corners, straps, handles, etc. Together with a brown leather suitcase having blue covered interior.
1055	A quantity of items to include brass mounted circular box, life buoys bookends, carved tankard and mahogany goblet.		
1056	A cast metal white pig doorstop, 7" long and a large cast metal steam train		

1068	A quantity of games including; a Remy Martin 'Captains Mistress' game (boxed), Scrabble De Luxe, Pictionary, Backgammon, etc.	1082	Three pairs of Binoculars including; WWII type Bino Prism No.5 Mk4 x 7, Vesper Superfield 12 x 50 and Meade 10 x 50. Plus a boxed Grampian GR2 Ribbon microphone, etc.
1069	A Lorenzo Guitar in a canvas case and a Hohner "Concerta" guitar, a/f.	1083	A quantity of miscellanea including; tins, shells, pestle & mortar, tartan dog door stop, etc. Plus bottles of alcohol including; Ame, Weingut Michael Shafer, Nahe 1990 er Riesling wine, etc.
1070	A pair of turned wooden Candlesticks with weighted bases, 12" tall.	1084	A small Artists box by G. Rowney & Co containing a white ceramic palette and various watercolour paint blocks, plus a key. Together with a fountain pen having 18ct rolled gold hallmarked bands (18ct RG) and a 14ct nib.
1071	A quantity of treen including; a wooden box carved with oak leaves and acorns, four carved cats painted in bright colours (one with jointed limbs) plus a carved trinket pot, etc.	1085	A large piece of crewel work fabric in cream having yellow, orange and pink floral design (a/f), 104" x 84".
1072	A Celtic Clothing Company long Sheepskin coat, size 16.	1086	A large leather patchwork style rug having woven and palm tree panels and fringing.
1073	A Duchess silk satin Wedding Dress having metallic thread and beading detail to the front and sleeve trim with boned corset structure.	1087	A 'Derw' Welsh Wool blanket in cream, blue and pink, a black and white diamond pattern throw, tapestry cushion, etc.
1074	A 'CP Leather Company' cropped Nubuck leather jacket (size M) and a Royal Essex Navy blazer with 'Medical College Bengal Table Tennis, Tennis, Badminton 1949-50' patch.	1088	A 'Younger's Scotch Bitter' sign, 24" x 19".
1075	A quantity of clothing including; crewel work brightly coloured Kaftan, an 'Ortis' long quilted jacket, a floral silk wrap, handmade jacket, etc.	1089	A framed Ordnance Survey Map of Herefordshire - sheet 198 and Ordnance Survey Map of Swansea, 23 1/2" x 19 1/2".
1076	A box of scarves, shawls, some silk, wool including a Pure New Wool WS Wadhwa Bros Kashmir shawl, etc. Plus fabric, table cloths with Eastern print and an orange silk screen printed with swans and fishes, etc.	1090	A quantity of miscellanea to include; golf balls, hat pins, glove stretchers, padlocks, Red Cross badge, two horse racing trophies for 'Heighlin' - Winner at Epsom April 2020 and Cheltenham March 2020.
1077	A wall hanging quilt of various heavily embroidered fabric in multi colours having sequin and shell embellishments 62" x 38". Together with a hand painted wall hanging of various shapes, lizards, fish, etc 38" x 57".	1091	A quantity of razors, hair tongs, etc.
1078	A quantity of silk and other fabrics including; a piece of fabric having gold background and decorated with cream and bright pink Eastern scenes with a floral border pattern in different colours, etc.	1092	A cast metal Buddhist figure in brass finish, 13" tall.
1079	A quantity of silk and other fabrics including; screen printed, etc, various patterns; scroll, floral, etc.	1093	A cast metal *** Deity figure, 13" tall.
1080	A dark brown leather vanity case having blue covered interior together with a tan brown vanity case by Finnigans Ltd having gilt initials and key.	1094	A large terracotta jug (handle missing), 13" tall.
1081	A quantity of miscellanea including; a wooden and glass table top bookshelf, a carved bookslide and a carved desk/letter tidy.	1095	A metal hat box with lock and key, 15 3/4" wide x 11" high.
		1096	A Barbour 'Border' 3/4 Wax jacket, size 42".
		1097	A Barbour 'Bushman' leather jacket, size medium.
		1098	A limited edition print of a Bass Brewers Dray Horse, a framed Charrington Brewery price list and a wooden framed 1985 First Day Cover of Bass Charrington.
		1099	A quantity of British and Foreign coins and banknotes in a presentation album.
		1100	A tin of Army cap badges and a WWI Service medal and a 1914/1915 Star (name scratched from back). ***
		1101	A pair of framed vintage embroideries, 35cm x 67cm.

1102	An unusual vintage gilt leather and velvet draw string bag, book marks, etc.	1119	A 1950's portable electric Singer Sewing machine, featherweight, No: 221K1, Serial No: EG344539, with service history, with original flex and plug (to comply with electrical regulations the flex and plug need to be changed).
1103	A pair of interlined 'Country House' style Curtains, 230 cm drop x 196 cm wide.	1120	Ten Penknives/folding knives to include; a Mother of Pearl and Silver fruit knife, Sheffield 1901, maker William Neale, etc. plus a gents Sterling silver ring having USA Army logo.
1104	Three 19th c. agate desk accessories, a polished Blue John Seal, a polished agate paper weight and a gilt metal eagle claw with polished agate ball seal. 8**	1121	An Oil Lamp with blue glass reservoir, 21 1/2" overall including chimney.
1105	A quantity of miscellanea including; a decorative paperweight, straw work box, shells, inlaid stone box, Russian lacquer box, carved tribal figure, intricately decorated bottle, etc.	1122	A pair of Elephant ebony Bookends, 8" wide x 7" high.
1106	A box of miscellanea to include; a marquetry picture, shells, soapstone model, a Schott concert recorder, cared wooden items, polished stone eggs, novelty inkwell as a camel, etc.	1123	A Betjeman's Tantalus with three cut glass decanters (one rim chipped).
1107	A box of Die-cast toys including; farming machines, Dinky, etc.	1124	A Rosewood Bookslide.
1108	A heavyweight vintage herringbone tweed Overcoat by Woodbury having a quilted lining, size M.	1125	An unusual square Oak plant stand standing on four chamfered legs and having a drop-in metal tray to the top, 16 7/8" square x 20" high.
1109	A vintage heavyweight lined suede Overcoat.	1126	An early Box Iron, complete and a brass Bell.
1110	A Victorian burr-walnut Writing slope, 13 1/2" wide x 9" deep x 6 1/2" high (in need of internal restoration).	1127	An old suitcase and contents including three boxed respirators, cattle market dockets and statements, photographs, greeting cards, Bibles, etc.
1111	A box of mainly metallic or technical miscellanea including; three heavy brass door hinges, photographic items, an early 20th Century Indian rubber eraser, old curling tongs, a draughtsman's variable angle square, boxed microphone, early electro mechanical torch, commemorative medallion, etc.	1128	An eight day Mantle clock with Roman numerals and central dial in brass (with Roman numerals), lower section of door having a circular wreath style etched pattern, sharp pointed finials to the top and steep sided top, key and pendulum present and suppliers label fixed behind mechanism, 19 3/4" high x 10" wide.
1112	A quantity of miscellanea to include; a Lazy Susan, carved Black Forest head, mahogany reading slope, a horn ship, multi wood parquetry Cribbage board, 19th Century mahogany and brass camera parts, shells, a box of small fossils, elephant carrier, etc.	1129	Two correspondence Boxes, both a/f., one brass bound with lower side drawer, plus a Royal Worcester 'Fairies' plate and another.
1113	A plaster figure of a lady and dog, 15" wide x 9" tall.	1130	A fold-out Correspondence box with slope, inkwell and letter rack, brass recessed carrying handle, 10 1/2" wide x 9" deep x 5" high.
1114	A box of vintage games, poker chips, etc.	1131	A framed needlework by Mary E Bright, April 1906, 30 1/2" wide x 27" high.
1115	A circular Barbola wall mirror, bevelled, 19" diameter.	1132	A Pre-Columbian Textile in glazed frame, circa 500 BC with documents. ****
1116	A rectangular Barbola dressing table mirror, bevelled, 10 1/2" wide x 13 1/2" high.	1133	A vintage Suitcase and contents including mixed vintage items, old books, photographs, newspapers, etc.
1117	A metal 'Kinco' box containing a quantity of Crowns to include; Churchill 1965, Silver Jubilee 1977, Lady Diana 1981, etc.	1134	A Rotring fountain pen (cased) and Rotring metal ballpoint pen.
1118	Two framed pictures of African ladies made from butterflies.	1135	A Rotring mechanical pencil and a Rotring 'Freeway' red fountain pen and ballpoint pen cased set.

1136	A cased Grip Spacetec pen, two boxed Tactical pens and a boxed 'Sporting' fountain pen having iridium point 18k gold plated nib.	1153	An unusual vintage gardener's berry picking Cane incorporating bentwood basket and having pointed end to enable sticking into the ground whilst working; plus a besom.
1137	A Kaweco 'Sport' green fountain pen (cased), a cased Troika 'Retro Style' ballpoint pen and a retro 1951 'Tornado Groove Writer' green fountain pen (boxed with refill).	1154	A heavy cast metal Doorstop in the form of a lion on its haunches, 15 1/2" tall.
1138	Six Parker pens, being four ballpoint and two fountain pens.	1155	A cream painted cast iron Umbrella/stick stand with drip tray, 29" tall.
1139	Various pen refills including; Lamy, Kaweco, Pilot, etc.	1156	A cased Taxidermy of a trout, 32 1/4" x 10" high.
1140	A quantity of pens including; Shaffer ballpoint, Online Germany ballpoint, etc.	1157	A walking Cane having German silver handle marked 830, initials engraved at the end of the handle.
1141	Four pens including; Parker Sonnet ballpoint, Wancher fountain pen, L' Plume ballpoint, etc.	1158	Two walking sticks; one having a silver collar and antler handle, the other having a silver knob (a/f).
1142	A quantity of pens including; Pilot, Papermate, mechanical pencils (including Staedtler and Pentel), etc. Plus two watches; Invicta Chronographer and Geneva.	1159	A Shillelagh and a Blackthorn walking cane.
1143	A small quantity of pens including; cased KLXZ102 fountain pen, Pierre Belvedere ballpoint, matching cased set of ballpoints, etc.	1160	A quantity of treen including; pipe rack, candle sconce, small tray, etc.
1144	A large old rose/cream wool Blanket, 104" x 104".	1161	A quantity of miscellanea to include; a correspondence box (a/f), Arts & Crafts brass and copper candle box, forge made candlestick, Castrol flicker book of Sir Malcolm Campbell making The Worlds Water Speed record, etc.
1145	A 19th century Glass Dome, 19" high x 11" wide.	1162	Three metal pill boxes with polished stone lids.
1146	A mid 19th century Chad Valley 'Bagatelle' board game.	1163	A sewing Box having marquetry decoration to the lid with fitted compartments plus contents, 10" wide x 6 3/4" deep x 4 1/4" high.
1147	A set of 'Shell' collectors coins 'Man in Flight'.	1164	An unusually small ebonised cased single train movement Wall Clock having Roman numerals, 10 1/4" diameter, the face 7 1/4" diameter approx., winder present (running at time of lotting).
1148	A framed collection of Fishing flies, 26" x 20".	1165	A pretty brass over leather String Box having decoration of swags and bows, 4" tall.
1149	A pair of Soapstone Bookends having carvings of flowers tumbling from a vase, 3 1/4" x 4 1/4".	1166	A metal figure of Pegasus, 12 1/2" tall.
1150	A vintage Minolta Pocket Autoplay 460T with instruction manual., together with a Sony DCT Video Camera in shoulder bag with instruction book, cabling, two batteries, remote control and additional screw on 'Fisheye' lens.	1167	A small miniature Watercolour portrait of a lady sat in a chair. No Visible signature, wooden frame in gilt oval mount, 6" x 5" overall including frame.
1151	A quantity of gent's Shaving equipment including; Valet safety razor, two Rolls razors, two pairs of hand clippers boxed, Comet safety hair cutter and a mini safety razor in metal box with mirror.	1168	A Liverpool & Provincial Building Society Poster, framed and hand-painted, 20 1/2" x 30 1/2" .
1152	Various Welsh trinkets including Welsh Coal trinket box, slate coasters etc. and a pair of Meade 10 x 50 binoculars.	1169	An Arts & Crafts bellows by R.A. Lister & Co. Ltd.
		1170	A box of First Day Covers of "Mechanics Institute Manchester Trades Union Congress" dated 1968, 50th Anniversary Votes for Women etc.
		1171	A box of First Day Covers of Trades Union Congress dated 1968 and Cutty Sark.

1172	A cast iron and brass model cannon, 18 1/2" long x 8 1/4" high.	1195	A Mahogany cased Bracket Clock having bevelled glass panels, the two train movement by Birch & Gaydon, 153 Fenchurch Street, London having a steel face with a chapter ring with Roman numerals, inset above are a regulation dial and a chime/silent selector, the heavy brass plate movement, striking on two gongs, and having the wheel of the escapement visible through the top window, 8 1/4" wide x 10 1/2" high x 7 1/2" deep. Running and chiming on the hours and quarter hours during the day of lotting. (An Allen key is present to open the case but no key is present).
1173	A large quantity of Marbles.		
1174	A box of old OS maps, including Bartholomew's maps.		
1175	A "Jolly Man" Starkies Patent Money box.		
1176	A quantity of unused stamps, 1d/4d/5d, circa 1968.		
1177	A quantity of old small glass bottles including; ink, medicinal, essence, Old-Sol, Paterson, etc.		
1178	A quantity of old bottles including; Holbrook & Co, 'Stretton Hills Mineral Water', etc.		
1179	A Praktica Luxmedia 235 camera.	1196	A mother of pearl inlaid Rosewood cased drop-dial Wall Clock, the single fusee movement having Roman numerals and the name, W. Isherwood Bolton, running in the days of cataloguing, 17" wide x 22 3/4" high (brass bezel detached and no glass).
1180	A Tonka No. 822 construction set and a Deans Rag book company limited edition ninety niner mohair bear. ***		
1181	A wooden box of over 100 Magic Lantern Slides including; cattle, domestic, rural, Royalty, religious, etc.	1197	Two interesting small Sino Tibetan temple bells, probably 17th - 18th c. and an early Tibetan circular box with evidence of silver inlay, probably 18th c. Bells 2 1/4" tall, box 3" diameter
1182	A large quantity of Magic Lantern Slides including; P & O Shipping Line, Aladdin, Robinson Crusoe, etc.		
1183	A quantity of tea cards, matchboxes, marbles and souvenir horn.	1198	A Tibetan bronze figure of Buddha, of 15th - 16th c. style and probably of the period; natural evidence of wear and good malachite patination, 7 3/4" tall.
1184	A walking cane with silver tip (a/f).		
1185	A Barge ware metal hat box, 16" wide x 13 1/2" high.	1199	A rare Khorassan bronze candlestick of typical form, 12th - 13th c., a band of stylized calligraphy close to the candle holder, 13" diameter at base, 10" high.
1186	A set of Antlers, 23" wide x 21" long.		
1187	A leather Hat Box, 18 1/4" x 18" x 9 1/2".	1200	A Khorassan bronze ewer, 12th - 13th c., the fluted body with bands of incised decoration, the neck with raised decoration in the form of a fantastic beast, some silver inlay, 14 3/4" tall.
1188	A 1920's leather Suitcase, 28" wide x 18" deep x 8" high.	1201	An Alabaster stele, South Arabian peninsula, circa 3rd c. BC., carved with a bull's head in relief, 8" tall including stand.
1189	A grey Top Hat made for B. Lipman Ltd., size 7 1/8".	1202	A Spinning Wheel, 26" diameter, having detachable legs and a treadle.
1190	A cased pair of Octra binoculars 10 x 50.	1203	A very good ancient Greek pottery Kylix cup, 6th c. BC., ochre and black glaze with finely painted Acanthus figures close to the handles, traces of an ancient inscription in black visible close to the rim, some evident repairs, 5 1/2" diameter.
1191	A mink (?) short fur coat by Maxwell Croft.		
1192	A pair of framed Brass Rubbings of monk and nun, 15" x 41" high.	1204	A large Corinthian or Etrusco - Corinthian pottery Kylix cup with geometric and Acanthus decoration, circa 6th c. BC.; museum type restoration, 6 3/4" diameter.
1193	An Oil lamp having brass base with clear chimney and mustard colour glass shade, 19" tall.		
1194	A ladies walking cane, the horn handle in the form of a Greyhound head with silver collar, 30" long.		

1205	A fine pair of carved and gilded small guardian figures, Cambodia (or Indonesia), 18th -19th c., each 6" tall.	1221	A small quantity of cameras and binoculars including; Praktica binoculars, Hanimex 35ES, Olympus cameras, etc.
1206	A rare and very early Indian black stone stele, carved with a figure of Ganesh, North India Pala period, 11th - 12th c., 12" tall including base.	1222	A dark-wood Hermle two-train movement Wall Clock striking the hours on a gong and having Arabic numerals. The pendulum and key are present and the clock was running through the day of lotting. 28 3/4" high, 10 3/8" wide and 5 1/4" deep.
1207	A very early and highly collectable Indian bronze figure of dancing Shiva, late Chola period, 12th - 13th c., damages and losses as seen, 7 1/2" tall including base	1223	A set of Librasco scales with various weights.
1208	A fragmentary sandstone bust of Vishnu, central India, 11th c., mounted on stand, 16 1/2" tall including stand.	1224	A quantity of Queen Elizabeth II Crowns including; Churchill, Queen Mothers Birthday, etc.
1209	An unusually fine bronze African Omani slave ankle bracelet, highly decorated and with interior bell, 18th - 19th c.	1225	A Garrard mantle Clock with key and pendulum, 9 1/2" wide x 8 3/4" high.
1210	A pair of small Chinese bronze 'Gu' vases, probably Ming dynasty, on custom made wooden stands, 7 3/8" tall including stands.	1226	An oak two train Art Deco style Mantle Clock having Arabic numerals with pendulum and key, 10" wide x 8 1/4" high.
1211	An unusual near pair of cast brass Russian icons, 18th - 19th c., depicting Christ and the Virgin, each within a delicate foliate border, 5 7/8" x 6 1/4" each.	1227	Two 1940's/1950's Midwife uniforms with a student midwife's birth note book from Dundee Royal Infirmary from the same period. Together with an old Guides whistle and penknife, etc.
1212	A cross-banded Mahogany framed free standing Dressing table Mirror, the central glass being a swing mirror and standing on cabriole legs, 26 3/4" high x 33 1/2" (max).	1228	A quantity of collectible 50p coins including; Beatrix Potter, Olympics, Paddington, Isaac Newton, etc.
1213	A quantity of Brooke Bond tea card Albums.	1229	Two albums of Stamps including USA, Spain, Bermuda, Kenya, Indonesia, etc.
1214	Two albums of First day Covers.	1230	Four Stamp Albums and contents including Australia, UK, USA, Channel Islands, Canada, etc.
1215	Two small barometers including Weathermaster and a small spirit level.	1231	Three Albums and contents including First Day Covers, stamp hinges, loose stamps, etc.
1216	A Hermle Oak cased Wall clock having bevelled glass panels, the single train movement having a face with Arabic numerals. The pendulum and key are present and the clock was running through the day of lotting. 22 1/2" high x 11 1/4" wide and 5 1/4" deep approx.	1232	A Bongo drum, 12 1/2" tall.
1217	A two train slate Mantle Clock having Roman numerals with pendulum and key, 14" wide x 12 1/2" high.	1233	A quantity of fountain pens including; Waterman's, Conway Stewart, Platignum, Burnham, mostly with 14ct gold nibs.
1218	Two two-train Mantle Clocks, both with pendulums and keys; one being by Smiths with cracked glass.	1234	A tin of pens, pencils, etc. including; Blackbird fountain pens with 14ct gold nibs, 1953 Coronation souvenir ball point pen, cigarette holder, etc.
1219	A three train Westminster chiming Mantle Clock and a two train Mantle Clock, both with pendulums and keys; one by 'Andrew, the other Smiths.	1235	A quantity of miscellanea including; treen bookends, Portland ware tin plates of the late Queen & Prince Phillip, metal sculpture of a duck, wine bottle set, bottle of Calvados, etc.
1220	A Junghans Oak cased bevelled glazed two-train movement wall clock having Arabic numerals and striking the hours on a gong. Pendulum and key present and ran through the days of lotting. 23 3/4" high x 12" x 5 1/4" deep.	1236	Three Fishing Rods including; 15ft Hardy Salmon Fly Graphite De Luxe, 15ft Sage Graphite III, plus another.
		1237	Two medical kits; Kolormeter in wooden box and ENT Probe Light.
		1238	A Robot Star 35mm camera with telescope attachment plus accessories in a wooden case.



1239	A Robot Vollautomat 35mm camera with telescope attachment in a wooden case.	1257	Six cameras, one six - 20 'Brownie' C Kodak (1930's/40's), Eastman Kodak Mar 4 1902, May 6 1913 US patents "Use Photographic Film" no. A-127 "Pocket Folding Camera" plus leather case (1920's), Voightlander Vito BL late 1950's colour Skopa lens 1: 3.5/50 plus leather case, Kodak 35 No.1 Diomatic (no lens surround) plus leather case 1930's, Praktica LTL SLR with Carl Zeiss Jena 2.8/50 lens plus soft black leatherette case, Pentax ME Super SLR with 1.7/50 lens with instruction manual bought 1983 used until 1987 plus padded carry case and two manuals for Kodak Sterling II and a Kodak Retinette 1A.
1240	A Jaguar promotional holdall, Burago 1/18 scale 1961 Jaguar E Cabriolet and Maisto 1992 Jaguar XJ220, plus a small quantity of photos of Jaguar cars.	1258	A 1940's wooden recovery truck, three Pipes, one by Smoke Craft Premier and another Bewlay Standard, Pipe tampers, Rolled gold tie pin etc.
1241	A quantity of model Jaguar cars including; Onyx Castrol Jaguar XJR-9, Corgi, Mk 2, 4.2 litre E Type, Mobil XJS, etc.	1259	A lambswool Stole with maroon lining and button fastening, size large and dark brown Collar and Lapels front hook fastening, possibly lambswool.
1242	A circa 1900 Mahogany swing Mirror having scroll feature side supports and a shaped base, 23 3/4" wide x 9 1/2" deep x 24 3/4" high.	1260	A fur stole with brown lining and fur fold back collar having lined tapered ends.
1243	A blue Fox Fur "Saga Fox" Jacket, size 10/12.	1261	A short fur cape with brown lining, elasticated stay across back.
1244	A Rayban "P" Ladies Polarized Sunglasses, in a Farbris Lane case.	1262	A fur scarf with brown lining slot for securing.
1245	A circular Barometer by Dunscombe of Bristol, 10" diameter (glass cracked).	1263	Two fur scarves and black fur muff.
1246	An Oak cased Aneroid Barometer with thermometer, glass cracked, 34" long overall.	1264	Two graduation gowns, one by Ede & Ravenscroft, the other by James Neal.
1247	A new First Day Cover Album and pack of refills, a small album of First Day Covers 1964 - 1976 and Royal Mail Special Stamps Album 1984 with Stamps.	1265	Two graduation gowns, one navy blue, the other black by Ryder & Amies, with a mortar board by W & G Taylor and a hood with white lining.
1248	A quantity of First Day Cover files, including four full albums and one part full 1977 - 1980 and 1987 - 1988 years.	1266	A fur cape, four points to hem, black lining.
1249	A large collection of First Day Covers in the original envelopes, stamps sets, etc., mainly 1999 and early 2000's.	1267	A short ermine cape having high fur lined collar, front hook fastening (in checked zip up bag).
1250	A Quantity of loose stamps, four Stamp stock books with many mixed stamps, many mint stamps and English and foreign stamps a stamp View master, etc.	1268	A lambswool 'Beaver Lamb' fur jacket 'F. Border & Sons Ltd, Ipswich', front hook fastening
1251	A framed and glazed print of a Map of 'The Countie and Citie of Lyncolne' described with The Armes of Them That Have Bene Earles Thereof fince the conqueft'. 21" x 16" including frame.	1269	A Velvet Smoking jacket, waistcoat and gold embroidered hat in midnight blue (blue/black), 42"-44" chest.
1252	A quantity of treen including; Rototherm barometer/thermometer, card boxes, Dominoes, elephant plaque plus a brass framed oval swing mirror, binoculars, etc.	1270	A black Tailcoat suit (for white or black tie), tailcoat having silk lapels, 40" chest (some damage), trousers having button fly and double side taping, 38" waist.
1253	A quantity of miscellanea including; Novelty cigarette lighter (base a/f), driving gloves, collectors model cars, paper knives, Kodak Instamatic camera, travel clock, etc.	1271	A vintage Black tie dinner jacket having one button fastening and silk lapel facings, 44" chest and a waistcoat, 44" chest.
1254	A Nintendo DS Lite (with instructions) 'Brain Training' starter pack plus classic world games, etc.		
1256	A box of keys, mainly mortice lock type in various sizes plus Yale, key rings etc., and a vintage Sutton's Seeds tin.		

1272	A quantity of vintage gents accessories to include three caps, two being school caps by New & Lingwood and the other a rugby cap dated 1938-39 with metal thread, two pairs of vintage braces (button fastening), two cream silk scarves and one green silk scarf with spots, approx. thirteen ties from the 1930's-1970's, also three smoking pipes and cigar trimmers.	1285	An antique clockwork Teddy Bear, a/f, 5 1/2" tall.
1273	A silver/grey Top hat by Moss Bros, size 7, with accompanying hat box.	1286	An Overmantle Mirror with pillars to either side, 33" wide x 20 1/2" high.
1274	Two Army Bush hats, one stamped Failsworth Hats Ltd. 1942 size 7, together with two army belts one named 'The Universal' and two RWAFF (Royal West African Frontier Force) rank slips.	1287	A quantity of treen and other miscellanea including ducks, large bowl, polished stone, mother of pearl shells, framed print of a photograph "Christ in Majesty", etc.
1275	A brown leather Antler suitcase with some travel labels.	1288	A Zither type instrument.
1276	A large Brown's Colour Illustrated Family Bible, leather and metal bound with clasps, from the 1800's.	1289	Two mantle clocks; a two train 'Andrew' clock with pendulum, plus another.
1277	A 1940's Valve Radio "Cossor A.C. Mains All Wave Superhet Reciever 77", 15" x 10" x 18 1/2" tall, a/f.	1290	An ebonised double Standish/Inkstand with two glass ink bottles having pink china plaque, 12" wide x 8" deep x 6" high.
1278	An early 1900's Steamer trunk, banded in wood, paper lined interior and with accompanying leather handle and straps.	1291	A box of 4 Vintage Welsh made camping blankets. in grey and lime green.
1279	A quantity of household miscellanea to include three Bakelite napkin rings, 'Bel' cream maker, four 'Golly' figures, Homepride figures, 'Virol - Bone Marrow' stoneware pot, 'Evercool' double egg poacher, Jubilee model and a quantity of Ty-Phoo teacard collector's booklets, Wild flowers etc.	1292	A Mahogany framed square Stool standing on ridged turned legs and having a drop-in zig-zag patterned needleworked seat, 18 1/2" x 18 1/2" x 15" high.
1280	1960's magazines 'Understanding Science' together with the book 'Understanding Science Volume I'.	1293	A dark stained Satinwood magazine rack.
1281	A quantity of miscellanea to include a Victorian leather bound photograph album, 6 1/2" x 5 1/2" x 2 1/2" and a small leather bound Bible, 1945 Baynell Ltd. Flag bag, three cameras; Kodak Retinette 18, Yashica and an Olympus, boxed 'A Clipper by Burman' boxed set of hair clippers, 'Solingen' boxed Razor, boxed Slide rule, Bosson's England Squirrel plaque and Horn carved fish art.	1294	A quantity of English decimal and pre-decimal coins including three silver threepence, half crown, farthings and an honesty box.
1282	A Rosewood Tea Caddy of sarcophagus form with button feet, 9" x 5 1/4" x 5" high.	1295	A small quantity of old English and foreign coins including 179(?)7 Cartwheel penny (worn), Victorian pennies etc.
1283	A Map of Monmouthshire, published by Pigot & Co., Fleet Street, London, map size 14" x 9".	1296	A quantity of foreign coins including two complete Canada coin sets for 1980 and 1982, Spanish, Italian etc.
1284	An apprentice piece Chest of Drawers with back stand, 11" wide x 8" deep x 7 1/4" high.	1297	A small quantity of crowns including 1977 Silver Jubilee, Charles & Diana, cased 80th Queen Mother's Birthday etc.
		1298	A small quantity of coins including 1935 Crown, Royal Mint presentation 'The Falkland Islands Liberation' crown, Royal Mint 1984 uncirculated coin collection complete, cased 'The Triple of Triple Crowns' crown coin etc.
		1299	Eight cased Crowns including 1977 Silver Jubilee and Silver Wedding crown.
		1300	A semi precious Mineral Table Globe, 12" diameter x 14" tall.
		1301	A Deans/Gwentoy Group Welsh Dragon Rugby Union mascot Soft Toy, 19" tall.
		1302	A horn shepherd's crook and a thumbstick with badges.
		1303	A quantity of walking sticks, one with brass duck head etc., in a clay pot/stick stand.
		1304	A Diana Princess of Wales First Day cover album.

1305	A small quantity of Jade Goody boxed 'Controversial' and 'Shh' eau de parfums (sealed) and a Jane Goody 'Controversial' eau de parfum and body cream lotion set (lotion used).	1318	A quantity of miscellaneous including boxed resin animal figures, vintage Christmas cake decorations/toppers, etc.
1306	A small quantity of sealed boxed Philosophy eau de parfums including 'Pure Grace', 'Baby Grace', etc. (7 x 120ml and 1 x 60ml).	1319	A boxed Sony Video 8 handi-cam, cased Kodak EK6 instant camera, cased pair of Notovist MKII 8 x 30 binoculars, etc.
1307	A small quantity of sealed boxes of cosmetics/perfumes including Stella McCartney 'Stella in Two' eau de toilette and solid perfume, Alexander McQueen, 'Youth Dew Amber Nude' by Tom Ford, Estee Lauder collection etc.	1320	A quantity of treen including pair of juggling pins, biscuit barrel, figures, etc.
1308	A small quantity of sealed boxes of perfumes/cosmetics including Elizabeth Arden, Vera Wang 'Look', Elizabeth Taylor, Peter Andre 'Unconditional'.	1321	A small quantity of miscellanea including Zippo and other lighters, penknives, two compacts (one being musical by Kigu), "The Acme Thunderer" whistle, etc.
1309	A boxed 'Very Valentino' by Valentino 350ml eau de toilette.	1322	A quantity of miscellanea including jewellery box, mineral globes, shell, purses and wallets, etc.
1310	Three boxed eau de parfum/toilette and body lotion gift sets: 'Miss Boucheron', Elizabeth Taylor 'Passion' and 'Agent Provocateur Maitresse'.	1323	A framed Woolwork Tapestry of an old man and young girl, 19 1/4" x 14 1/2".
1311	A box of perfumes/cosmetics including boxed Zandra Rhodes 'Button Flower' 50ml eau de parfum and coin purse, two boxed and sealed 'City Girl' parfums and fragrance, 'Sex in The City' perfumes etc.	1324	A quantity of miscellanea including 1961 Snoopy sniffer pull-along Toy by Fisher Price, Silver St. Christopher pendant, glass bottles, etc.
1312	A box of perfumes/cosmetics including four sealed boxed Greta Garbo perfume, 'Calotine de Gres', 'First' by Van Cleef & Arpels etc.	1324 A	The following lots 1315 - 1361 are being Sold on instructions of MonLife Heritage following the Collections Review 2019-2022, which was conducted following the Museum Association's Code of Ethics. Money raised will be invested in the long-term sustainability, use and development of MonLife Heritage's collections."
1313	For men, two boxed and sealed William Hunt Savile Row 100ml eau de toilette and a boxed William Hunt eau de parfum with cosmetic/washbag.	1325	An Oak and other woods desk top/Slope of school teacher's desk type, having a green fabric lined hinged lid access to the storage interior, 38 6/8" wide x 29" deep x 8 3/4" high approx. ***V.A.T. will be added to the hammer price of this lot.
1314	A quantity of gent's boxed and sealed eau de toilettes including Cerrutisi, 'B Men' Thierry Mugler, Cadillac etc.	1326	A quantity of carpenter's tools including two wrought iron braces and two draw-knives, one lacking handles but with unusual curved blade probably for spoke tool hand or strut making. ***V.A.T. will be added to the hammer price of this lot.
1315	A quantity of gent's boxed cosmetics, aftershave etc. including three boxed and sealed Diesel 'Fuel for Life', DKNY, Catalyst, Python Trussardi etc.	1327	Three old hammers including a tack hammer, a masons/miners hammer and a tipped point hammer for masons work or possibly mining, a Rosewood, bass and steel square, a winding key with spanner apertures to the handle, a double ended octagonal ring spanner, a pierced bronze metal ring, damaged large gear from a lock, 12 mm socket hexagonal screwdriver bit, etc. ***V.A.T. will be added to the hammer price of this lot.
1316	A large contemporary, lockable Wall mounted Jewellery Cabinet with mirror front, by lori Greiner, 48 1/2" high x 14 1/2" wide x 4" deep, containing empty cloth jewellery bags.		
1317	A quantity of miscellaneous including two pairs of vintage leather boxing gloves, Bakelite "The Ebco" bookshelf, "The War Illustrated" Vol. IV, etc.		

- 1328 A surveyor's Chain having brass tags, a wood and wrought iron rake head, a Roberts Windsor wall hanging shop display basket, an Ash wood tool handle, and a seven pronged Eel/fish spear head. \*\*\*V.A.T. will be added to the hammer price of this lot.
- 1329 Four old jigsaw Puzzles including Irish Channel Steamers, a circular Puzzle - scenes from the Commonwealth, My Lady's Garden and a Jig Map puzzle of the South American continent, a Motor Chase across London board game, a Trek World travel Race by Land, Sea and Air board game, a pack of playing cards and quantity of Minibrix and a Tudor Minibrix book "The complete building system in miniature with all rubber books" \*\*\*V.A.T. will be added to the hammer price of this lot.
- 1330 A cast iron and steel tubed gas fire/heater, 21" high x 15" x 6". \*\*\*V.A.T. will be added to the hammer price of this lot.
- 1331 Four early iron curling tongs, one have hallmarked silver handles (Birmingham hallmark). \*\*\*V.A.T. will be added to the hammer price of this lot.
- 1332 A brass and steel three blade blood-letting Phleam by Thomas Turner & Co., Sheffield.
- 1333 Four wooden bead formers including one of Lamb's tongue profile, possibly for plastering and glazing. \*\*\*V.A.T. will be added to the hammer price of this lot.
- 1334 An adjustable threading clamp/die with clamping and depth of cut adjustment, 13 3/8" long, a triangular cast iron pot stand/trivet and a table edge clamping belt drive rotating grindstone device, the larger drive wheel, 7 5/16" diameter. \*\*\*V.A.T. will be added to the hammer price of this lot.
- 1335 A bag of horse harness buckles and rings, two wall tethering rings, an old wrought iron door hinge, w.i. square drive key/pry bar, an old conical topped soldered jointed oil flask, a brass picture hook of cruciform shape, an old webbing horse head collar and an iron 8 hole horseshoe. \*\*\*V.A.T. will be added to the hammer price of this lot.
- 1336 A pierced brass work and wrought iron trivet with hooks for attachment to a fire front, a circular w.i. trivet - the leg united by a stretcher with an aperture for an oil lamp, a w.i. fire tongs, a hinged cast iron clasp resembling a door knocker but possibly a nut cracker or a press depicting foliage in relief, etc. \*\*\*V.A.T. will be added to the hammer price of this lot.
- 1337 A Cooper's compass/dividers, 11 9/16" long (found during the demolition of "The Rookery" - Grove Farmhouse, Grofield, Pant Lane in 1970), a wooden internal radiussed Plane by Invicta, stamped "C. Nurse, Mill St., Maidstone", and 66 foot Rabone's metallic wired tap with leather case, the tape marked in Links & Poles to one side, feet and inches to the other. \*\*\*V.A.T. will be added to the hammer price of this lot.
- 1338 A rarely found, folding barrel contents measuring dipstick, 24" long with various scales including "Barrel Ly", "Kilderkin St", "Kikderkin Ly", "Firkin St." and "Firkin Ly", "4 1/2 Pin St" and "4 1/2 pin Ly", and impressed "D. Preston & Sons, Birm, Eng". \*\*\*V.A.T. will be added to the hammer price of this lot.
- 1339 A cane Basket with central aperture, 14 7/8" diameter overall and containing an early wooden marking mortise/tenon gauge stamped "C. Parry", a rebating/profiling plate and an adjustable gouging plane. \*\*\*V.A.T. will be added to the hammer price of this lot.
- 1340 A quantity of mainly wooden items including a pair of "M" motif fretworked miniature chairs with scroll backs, 7 7/8" high, a mahogany boot jack, an interesting turned Brazil nut husk worked to reveal the nuts within, a long stemmed treen smoker's pipe, 16 5/8" long, a cased Meerschaum pipe (slightly a/f), a pair of turned and painted wooden bowls of Russian style, two pairs of juggling/exercise clubs, 20 3/4" and 16 1/2" long, a turned wood bowling ball, an old leather cricket ball and another. \*\*\*V.A.T. will be added to the hammer price of this lot.
- 1341 A large Sheffield made Scissors probably a leather worker's, a leather workers marking/cutting wheel with turned wood handle, a rag rug making bodkin tool, a British made Bakelite spherical string holder and a small pein hammer possibly for jewellery making. \*\*\*V.A.T. will be added to the hammer price of this lot.

- 1342 A small frame with an oval green blue velvet mask for a portrait, a Beards Patent Eclipse Mahogany & Brass self-feeding and withdrawing projector slide holder for 3 1/4" square slides, a box of 12 colour panoramic projector slides, each 2" x 7" approx and a Pathescope British Patents No. 169976 - 175.365, 175266-277530, centre drive 8 mm "April Fool No. 30064". \*\*\*V.A.T. will be added to the hammer price of this lot.
- 1343 A highly collectable "Gibbons W. Hampton Boyds Patent" driver foot operated bell possibly from an horse drawn omnibus or Hansom cab/stage coach, a carriage drivers bulkhead fitting brass whip holder, a plaited whip and battery operated make/break action wood and brass based bell. \*\*\*V.A.T. will be added to the hammer price of this lot.
- 1344 A Georgian cook's vegetable chopper, a turned wood pestle/potato masher having an acorn finial, 11 3/4" long and a Vino No. 2 rotary knife cleaner with apertures for screw attaching to a table. \*\*\*V.A.T. will be added to the hammer price of this lot.
- 1345 An original boxed "The Vibro-Electa Massage Unit" (strictly for display only), a Neatsfoot compound tin, a tin of "Antiseptic Foot Ease Powder" and a tin of C.W.S. Pelaw Tile Polish (green). \*\*\*V.A.T. will be added to the hammer price of this lot.
- 1346 A cream coloured jewel Casket, the lid set with five polished stones of various colours and three beads (one missing) 11" x 8" x 4 1/2" high approx and containing a lady's small fabric handbag with oval scenes of gardens within a stylised floral surround, a Yardley London brass powder compact, the lid with a scene outside an early residence with a lady holding a basket and an old plastic and celluloid type purse in blue and cream, pocket tool set, two piece buckle set with simulated stone, enamelled cloisonne style napkin ring, old metal lidded trade case "Rolls Razor Imperial Blade", epns candle snuffer tray, silver teaspoon, etc. \*\*\*V.A.T. will be added to the hammer price of this lot.
- 1347 An old Palethorpe Royal Cambridge Sausages cardboard Box containing a blue glass lined pewter Pepperette, an emerald green glass ten sided salt, a tinsplate egg yolk separator, a hand whisk, a sliding clamping action twisted wired toasting fork, antique barrel tap, four old Corkscrews, Crown and Worthington bottle openers and a clamping action oil lamp light. \*\*\*V.A.T. will be added to the hammer price of this lot.
- 1348 A collectable Bull's head and tail Can Opener, a turned wood handled Turnkey and a three headed winding key. \*\*\*V.A.T. will be added to the hammer price of this lot.
- 1349 An unusual cased aluminium cased "Gardner Half Minute Freezer" - patent applied for made by Freezer Inc. Cleveland, Ohio, U.S.A. (appears to work by adding salt to ice slush), 10 1/4" x 8 5/8" wide x 7 1/4" high, with viewing window. \*\*\*V.A.T. will be added to the hammer price of this lot.
- 1350 A boxed cream maker machine, an aluminium milk/water flask, a Sirram "The Wasp" camping kettle, a clamshell action baking tin, an enamelled cream skimmer, a "Moulin Legumes" leaf chopper/cylinder (incomplete), etc. \*\*\*V.A.T. will be added to the hammer price of this lot.
- 1351 Three table clamping items including a hand driven slicing machine, a National No. 25 mincer and an Alexander No. 374 fruit juicer/mincer. \*\*\*V.A.T. will be added to the hammer price of this lot.
- 1352 A large bell shaped glass cover, 9" high, a pale green glass fluted/lobed bottle, a Unigate milk bottle, Horlicks mixer jar, a test tube, an oval pressed glass salt, a rummer with pontil base a tall oval jar with aluminium lid, a pressed glass scent bottle, Coronation 1953 glass pin dish, a spoon stand with an enamelled shield "Lion rampant & Empire Exhibition Scotland 1938, and various trade bottles including Boots CAsh Chemist, Charles Edwards Brewery Limited and damaged bottles including Charles Edwards Brewery Limited, Llanfoist; Watkins & Sons, Crystal Mineral Waters, Hereford and David Scott Mineral Water Works, Abergavenny. \*\*\*V.A.T. will be added to the hammer price of this lot.

- 1353 A quantity of chemist's bottles including "Pot.Iodid", "SP.Camph", "Tr.Canth", one clear marked with to the base "E.S & Co. Registered No. 26...97 and two reeded green bottles, one a/f and one with ground glass stopper. \*\*\*V.A.T. will be added to the hammer price of this lot.
- 1354 An unusual cane basket and various china including Minton mask spouted Jug (cracked), a Worcester lobed body crested beaker, a blue and white ring stand, a 1953 Coronation cup & saucer (a/f), a terracotta relief decorated bowl "FR" to base, a blue salt glazed beaker "FR" to base, plus damaged blue and white plates, a pair of stoneware Bottles "Facey & SOn. Abergavenny (one chipped to neck), and globular terracotta flask with glazed neck and shoulder (handle missing). \*\*\*V.A.T. will be added to the hammer price of this lot.
- 1355 Two brass swinging fireplace Spit Jack brackets, a clockwork spit jack, a wrought iron spit jack meat suspension hook, a cast iron adjustable spit jack meat hanging wheel, a wrought iron sway bar "S" hook and a section of pierced brass frieze. \*\*\*V.A.T. will be added to the hammer price of this lot.
- 1356 A Pam wooden case Wireless set, 16" x 7 1/2" x 13 3/8" high (for display purposes only) and a Ferguson Flight-3122 multi band transistor radio, tip of aerial absent, marked to base "Paul Blyton". \*\*\*V.A.T. will be added to the hammer price of this lot.
- 1357 Two brass and hardwood carpenter's Braces (one incomplete), a wood and wrought iron carpenter's brace, a large mortise chisel, a carpenter's chisel (lacking handle), a primitive mallet head and a blade for a bead cutting plane. \*\*\*V.A.T. will be added to the hammer price of this lot.
- 1358 A W. Scott patent (144 Charing Cross Road, London.) Oak/other woods folding Campaign Table, 22" x 7 1/4" x 29 1/8" extending when open to 58 1/4", the legs being of turned wood with "X" stretcher. \*\*\*V.A.T. will be added to the hammer price of this lot.
- 1359 A very heavy cast iron camp Fire Cauldron standing on three splayed feet, 11 9/16" diameter x 8 6/16" high approx. \*\*\*V.A.T. will be added to the hammer price of this lot.
- 1360 An early and primitive hewn Stone Mortar/Quern Stone of chamfered cornered square form having geometric six petalled bloom within a circle to one side. A hole 1 1/2" diameter hole exists through the base, 10 1/2" x 10 1/2" x 8" high approx. \*\*\*V.A.T. will be added to the hammer price of this lot.
- 1361 Two cast iron steel rod Stands, 38" and 79 3/8" high. \*\*\*V.A.T. will be added to the hammer price of this lot.
- 1362 A border pattern and fringed rug in cream, red and navy having central medallion 94" x 60".
- 1363 A border patterned rug in red, green and cream geometric pattern 65" x 42" (a/f), along with a prayer/hearth rug in brown and cream 50" x 27".
- 1364 A border patterned and fringed rug in vibrant red ground having a central cream medallion and a blue border with leaf and floral pattern 80" x 62".
- 1365 A border patterned rug in navy, burgundy and gold with central medallion 64" x 43". Together with a border patterned and fringed rug (possibly silk) in peach, blue and grey with all over rectangular pattern 64" x 36".
- 1366 A square border patterned and fringed rug in red and blue having diamond pattern all over 72" x 58".
- 1367 A large border patterned rug on a red ground having black central diamonds, some wear to one corner 113" x 60".
- 1368 A dark blue ground Runner with pink and cream motifs, 117" x 38".
- 1369 A dark blue ground rug 89" x 38" and matching blue ground rug with pink and cream motifs, 74" x 36".
- 1370 A dark ground geometric pattern, hand tied old rug, faded, 44 1/2" x 70".
- 1371 A bordered, patterned and fringed Runner, blue and orange with all over floral pattern and central panel, 160" long x 29" long.
- 1372 A bordered, patterned and fringed Rug, burgundy ground with green, terracotta and cream geometric pattern, 34" x 58" long.
- 1373 A hand-made wool Turkeman Carpet in deep blue field and repeating gul design, 9'5" x 7'2",

- 1374 A break cocking action Air Rifle, .177 calibre having an 18 5/16" long barrel, 42 3/8" long overall, cocks and fires normally. \*\*\*\*ALL WEAPONS AND/OR AMMUNITION MUST BE COLLECTED IN PERSON - NO POSTAGE. It is an offence for a person under the age of 18 to purchase an air weapon or ammunition for an air weapon, Proof of age will be required on collection which should be by prior arrangement.
- 1375 An old B.S.A. underlever cocking .177 calibre Air Rifle, serial no. L12363 having an 16 3/4" long barrel and pistol grip stock, 39 7/8" long overall. Trigger guard and adjustable sight absent but cocks and fires normally. \*\*\*\*ALL WEAPONS AND/OR AMMUNITION MUST BE COLLECTED IN PERSON - NO POSTAGE. It is an offence for a person under the age of 18 to purchase an air weapon or ammunition for an air weapon, Proof of age will be required on collection which should be by prior arrangement.
- 1376 A British Army 1960/70' two ammo box H84- MK1 to hold 200 rounds in clips of 4/7.62mm plus four boxes of 12 bore cartridges, two unopened, one a paper cased collectable box and some loose. \*\*\*\*ALL WEAPONS AND/OR AMMUNITION MUST BE COLLECTED IN PERSON - NO POSTAGE. PLEASE NOTE THAT A CURRENT APPROPRIATE GUN LICENCE WILL BE REQUIRED AND IS TO BE PRODUCED TO THE AUCTIONEERS AT THE TIME OF COLLECTION, WHICH SHOULD BE BY PRIOR ARRANGEMENT.
- 1377 A brown leather Cogswell & Harrison Ltd gun case having red baize fitted interior with key and straps.
- 1378 An Italian made "ME RANGER" blank firing six shot Revolver with leather gun belt and dummy bullets. \*\*\*\*ALL WEAPONS MUST BE COLLECTED IN PERSON - NO POSTAGE. Proof of age will be required on collection which should be by prior arrangement.
- 1379 A brass handled Bayonet in sheath, number on hilt and sheath '21082,' inscribed and dated 1871, 28" long. \*\*\*\*ALL WEAPONS MUST BE COLLECTED IN PERSON - NO POSTAGE. Proof of age will be required on collection which should be by prior arrangement.
- 1380 A brass handled Bayonet in sheath, number to hilt and sheath '63137', inscribed and dated 1868, 28" long. \*\*\*\*ALL WEAPONS MUST BE COLLECTED IN PERSON - NO POSTAGE. Proof of age will be required on collection which should be by prior arrangement.
- 1381 A wooden handled Bayonet, handle marked '293', no sheath, 16 3/4" tall. \*\*\*\*ALL WEAPONS MUST BE COLLECTED IN PERSON - NO POSTAGE. Proof of age will be required on collection which should be by prior arrangement.
- 1382 Two Percussion Pistols, one being a top hammer, rust pitted and stock as found but cocks and fires but the trigger spring requires replacing and the nipple is damaged, 7 3/4" long overall, the 3 3/4" long barrel having a calibre of 11.5 mm approx; the other having an octagonal barrel 4 5/8" long of about 12 mm, the stock tape repaired and requiring further attention, the hammers does not cock, being loose and the nipple is damaged, 9 1/4" long overall approx. \*\*\*\*ALL WEAPONS MUST BE COLLECTED IN PERSON - NO POSTAGE. Proof of age will be required on collection which should be by prior arrangement.
- 1383 An 1875 French long Bayonet and scabbard. \*\*\*\*ALL WEAPONS MUST BE COLLECTED IN PERSON - NO POSTAGE. Proof of age will be required on collection which should be by prior arrangement.
- 1384 A Swiss SIG Bayonet and scabbard. \*\*\*\*ALL WEAPONS MUST BE COLLECTED IN PERSON - NO POSTAGE. Proof of age will be required on collection which should be by prior arrangement.
- 1385 A Czech K98 Mauser Bayonet and scabbard. \*\*\*\*ALL WEAPONS MUST BE COLLECTED IN PERSON - NO POSTAGE. Proof of age will be required on collection which should be by prior arrangement.
- 1386 An Armalite M16 Bayonet and scabbard. \*\*\*\*ALL WEAPONS MUST BE COLLECTED IN PERSON - NO POSTAGE. Proof of age will be required on collection which should be by prior arrangement.
- 1387 A 1956 Yugoslavian 'M' type Bayonet and scabbard. \*\*\*\*ALL WEAPONS MUST BE COLLECTED IN PERSON - NO POSTAGE. Proof of age will be required on collection which should be by prior arrangement.

- 1388 A 16 bore Russian open hammer side by side 28 5/16" double barrelled, double trigger Shotgun having chequered pistol grip stock and fore-end. Serial no. B10102. 45 9/16" long overall. Cocks and fires normally. \*\*\*\*ALL WEAPONS MUST BE COLLECTED IN PERSON - NO POSTAGE. PLEASE NOTE THAT A CURRENT APPROPRIATE GUN LICENCE WILL BE REQUIRED AND IS TO BE PRODUCED TO THE AUCTIONEERS AT THE TIME OF COLLECTION, WHICH SHOULD BE BY PRIOR ARRANGEMENT.
- 1389 A 12 bore side by side 30" double barrelled, double trigger open hammer Shotgun by Wiggett & Son, Birmingham having chequered grip and fore-end. Serial No. C4140. Fitted with a recoil pad. 45 5/8" long overall. Cocks and fires normally. \*\*\*\*ALL WEAPONS MUST BE COLLECTED IN PERSON - NO POSTAGE. PLEASE NOTE THAT A CURRENT APPROPRIATE GUN LICENCE WILL BE REQUIRED AND IS TO BE PRODUCED TO THE AUCTIONEERS AT THE TIME OF COLLECTION, WHICH SHOULD BE BY PRIOR ARRANGEMENT.
- 1390 A 12 bore 30" single barrelled Martini action Greener's GP Shotgun having chequered grip and fore-end. Serial no. G72219. by W.W. Greener, Birmingham. 46 3/8" long overall. Cocks and fires normally.
- 1391 A pair of replica flintlock Pistols. \*\*\*\*ALL WEAPONS MUST BE COLLECTED IN PERSON - NO POSTAGE. Proof of age will be required on collection which should be by prior arrangement.
- 1392 A "ZAP Paintball" high impact plastic bodied Paintball Pistol/Gun, 12 3/4" long overall, appears new. \*\*\*\*ALL WEAPONS AND/OR AMMUNITION MUST BE COLLECTED IN PERSON - NO POSTAGE. It is an offence for a person under the age of 18 to purchase an air weapon or ammunition for an air weapon, Proof of age will be required on collection which should be by prior arrangement.
- 1393 A boxed Gamo C15 Blowback Semi-automatic .177 calibre C02 Air Pistol, serial no. 22B14055, complete with instruction booklet, 8 1/4" long overall. \*\*\*\*ALL WEAPONS AND/OR AMMUNITION MUST BE COLLECTED IN PERSON - NO POSTAGE. It is an offence for a person under the age of 18 to purchase an air weapon or ammunition for an air weapon, Proof of age will be required on collection which should be by prior arrangement.
- 1394 A break cocking action Air Rifle having an 14 7/8" long .177 calibre barrel, 37 7/8" long overall, cocks and fires normally, sold with a Brady of Halesowen canvas rifle sleeve. \*\*\*\*ALL WEAPONS AND/OR AMMUNITION MUST BE COLLECTED IN PERSON - NO POSTAGE. It is an offence for a person under the age of 18 to purchase an air weapon or ammunition for an air weapon, Proof of age will be required on collection which should be by prior arrangement. serial number B65293
- 1395 A Lie-Nielson USA Footprint No. 4 Wood Plane.
- 1396 A Stanley Bailey No. 4 Wood Plane.
- 1397 A B&O designed by Jacob Jensen - Bang & Olufsen 5500 music centre, including a Beomaster 5500 Tuner/Amplifier, a Beocord 5500 Cassette Deck, a Beogram 5500 Turntable, Master Control Panel 5500 and a pair of Beovox CX 100 Loudspeakers together with various cables and accessories.
- 1398 A Naim Uniti 2 All in one Music System, CD/FM & DAB Tuner/Amplifier plus Network Streaming, with IR Remote Control, mains cable, DAB/FM Trailing Antenna and Wifi and Bluetooth Aerials, S/No. 382318.
- 1399 A Bang and Olufsen B&O Beolit 400 Portable FM Transistor Radio.
- 1399 A A quantity of mixed ephemera to include two barrel taps, Crewkerne United marbled pop bottle, three other rare bottles, a metal mounted nut bowl, drumstick hardwood batten, a group of three elephants and a weaving shuttle.
- 1399 B A square Stool having unusual painted turned legs, the seat being of tensioned intricately woven string work.
- 1399 C A Marble table lamp with brass detail and stand, 15 1/2" tall.
- 1399 D A pair of Empire style two branch wall lights.
- 1399 E A brass Laura Ashley table lamp, 17" tall and a white painted table lamp, 20" tall approx..
- 1399 F A length of vintage metallic fringing, 6" deep, approx. 8m.
- 1399 G A wooden framed rectangular wall fixing Mirror, drilled with four fixing holes, 25" x 19" approx.



1399	H	A good quality Mahogany Canteen of Cutlery, designed a side table, standing on tapering square legs, the top having a hinged lid revealing a comprehensive set of cutlery also contained in the frieze drawer below, the A1 plate cutlery mainly by Denton & Dawn comprises 12 table forks, 10 dessert forks, 12 dinner knives (one lacking handle), 9 dessert knives, 8 teaspoons, 5 egg spoons. Two pairs of game carvers and a sharpening steel, 4 matching odd salt spoons, a mustard spoon, odd salt spoon, a hallmarked Silver sugar tongs, 6 fish eater knives and forks, 6 dessert knives and forks, 6 soup spoons, 12 dessert spoons, butter knife, gravy spoon, soup ladle, two sauce ladles and a pair of fish carvers. The table 29 7/8" x 20" x 31" high.	1403	Four Goebel 'Hummel' figures including; Farm Boy, Retreat to Safety, etc.
			1404	Five Goebel 'Hummel' figures including; Which Hand, Busy Student, etc.
			1405	A Gaudy Welsh part Teaset comprising teapot, lidded sucrier, sugar bowl, cream jugs, five cups, saucers and tea plates and two bread & butter plates, (teapot spout a/f and some hairline cracks).
			1406	Two old blue and white meat plates and footed cake stand.
			1407	Two Oriental blue and white Chargers decorated with butterflies and irises, 12 1/4" diameter.
			1408	A hexagonal Oriental plate in blues and oranges, 10 3/4" diameter.
			1409	A blue patterned ginger jar (no lid), 6 1/2" tall.
1399	J	An Oak and other woods seagrass seated Stool having angled legs terminating in spherical feet, 30 5/8" wide x 12" deep x 13 1/8" high.	1410	A Royal Crown Derby 'Old Imari' Vase no:1128 Lx11. 8" tall, (deep scratch to base - possibly seconds).
1399	K	A circular rustic Elm seated Stool standing on four legs united by a cross-stretcher, 12" diameter x 19 3/4" high.	1411	A Moorcroft 'Hibiscus' bowl in dark blue, 7" diameter.
1399	L	A very appealing 19th c. Walnut/Satinwood framed child's Chair having a shaped splat sabre legs and woven seagrass seat, 14 1/4" wide x 16" deep x 27 1/2" high.	1412	A 19th century Worcester Flight Barr and Barr 1813-1840 square dish having serpentine gilt rim, hand painted iron red flowers and gilt foliage.
1399	M	A darkwood child's comb back Side Chair standing on sloping turned legs with turned stretchers, 12 1/4" wide x 13 1/4" deep x 20 1/2" high.	1413	A large 19th century Chinese Ginger Jar, hand-painted blue leaf scroll ground with three large panels of calligraphy and to lid, double circular mark to base, 10" tall.
1399	N	A 1930's folk art diorama ship in a bottle, a 'Franklyn's Cutty Shag Tobacco' cribbage board and a 'Weekender Hohner Tremelo' harmonica.	1414	Three large Royal Doulton character jugs - Henry VIII 6642 D, Monty D6202 and Beefeater D6206, all 6" tall.
1399	P	A Triumphon Record Player with records.	1415	Three Royal Doulton large character jugs - Captain Ahab D6500, Robin Hood 6527 and Sairey Gamp D5528, all 6" tall.
1399	Q	An oval bevel plated Mirror, 23 1/4" x 14" in Mahogany frame.	1416	A Sylvac black poodle seated, 5 1/2" tall plus an unusual Wade perpetual calendar with brass rearing horse, 2 1/2" tall.
1399	R	A very heavy green Wall Telephone.	1417	A black and white Wedgwood Jasper ware tray, 6" long and sage green circular box, 5" diameter, a similar trinket dish and rare dark green dish.
1400		An original boxed Pifco Princess silent hair drier with attachments, a Philips audio cassette player, a hard-wood photo display unit, a boxed Halfords' foot pump, a boxed Gadget Shop neck & back massager and a boxed battery powered SK-328 massage gun.	1418	A Nao group of geese, a Worcester miniature jug, a similar poppy jug, a Derby style vase 2 1/2" tall and a Beswick grey wagtail.
			1419	7 Wedgwood Bradex plates titled Legend of King Arthur his life story, each 9" diameter and signed Richard Hook.
			1420	A signed hand painted Japanese Saki bowl and cup, another painted in black, a preserve jar wicker handle and a colourful painted 6 1/2" dish.
<b><u>PORCELAIN &amp; CHINA</u></b>				
1401		A small quantity of china including; Limoges jug, Doulton Victoria Diamond Jubilee mug, blue & white vase, etc.		
1402		A dressing table set in pale blue and white with gold detail.		

1421	A large Royal Adderley grey cat on a green cushion by Barbara Linley Adams, 7" tall and a Royal Doulton character rectangular dish featuring Johnny Wellett.	1436	A pair of Royal Worcester bottle bud Vases, marks for 1897, decorated with floral sprays on a blush ground, 9 1/4" tall.
1422	A large Chinese tea container featuring on each panel a blue screen of Chinese life 10" tall, a Chinese sage in blue robe carrying a staff 8" tall, a terracotta warrior in clay 10 1/2" tall and a blue patterned ginger jar.	1437	A small Moorcroft vase in Hibiscus pattern, 3 1/2" tall.
1423	A large sculptured flower vase, plus three vintage West German ceramic vases.	1438	A Carltonware Teapot with stand and matching hot water jug, a Wade lustre jug plus two others.
1424	A quantity of china to include; blue teapot with stand, water jug, milk and sugar, a black and gold teapot with stand and hot water jug, a seven piece sandwich plate set and a small wall vase.	1439	A pair of Staffordshire vases in Recherchee decoration of gold birds on a muted green ground having gold handles and rims. 10" high x 11 1/2" wide.
1425	A quantity of Bradex display plates from 'Old Country Crafts', 'Country Panorama' and 'Off the Beaten Track' series.	1440	A quantity of blue "Ridgways" and Sheridan dinnerware.
1426	A quantity of Bradex WWF display plates of birds, plus one of poppies.	1441	A quantity of bone china to include; Queen Anne tea set, three Salisbury cups & saucers and six Elizabethan Cavendish mugs & saucers.
1427	A quantity of Austrian Bradex display plates of rural continental scenes.	1442	A quantity of mixed china including; Royal Albert, Kingfisher design, etc.
1428	Four figures including three Lladro; Girl with Piglet, Boy with Lamb and Woman Holding her Hat and a Nao figure of a Woman Combing her Hair.	1443	Four pieces of Wedgwood Jasperware including; posy vase, trinket dish, trinket pot, etc.
1429	A quantity of miscellaneous china including; a small Royal Doulton 'Ninette' figure, a Chelsea figure of a woman with a basket of flowers (a/f), Morris Minor traveller money box, Studio Pottery chamber sticks, etc.	1444	Six large and one small Military soldier figures including; Royal Doulton 'Lifeguard', Capo-di-monte, etc.
1430	A hand painted terracotta plate having green background, central detail of a sage and a man writing on a scroll, lozenges around the rim featuring various flowers and fruit & floral details in blue to the base (a/f) 9" diameter.	1445	Two pairs of Staffordshire greyhound pen holders, 6" and 6 1/2" wide bases.
1431	A quantity of miscellaneous china including; Doulton Lambeth 'Harvest' jug (a/f), large Quimper style jug, etc and an Oriental part tea set including; teapot, two lidded cups (one lid missing).	1446	A Beswick 'Welsh Mare' (a/f) and a Staffordshire style Cow and calf.
1432	A cased Jiwenzhai *** tin inlaid Chinese Teaset comprising of six cups & saucers, milk jug, sugar bowl and teapot.	1447	A pair of miniature Staffordshire seated Dalmations, 5" tall.
1433	A quantity of Studio Pottery including; a large charger, mosaic lily design charger, bird design bowl initialed TM, Guadalajara bowl, etc.	1448	A pair of Staffordshire figures on horseback - 'Prince of Wales' and 'Princess' (a/f), 13 1/2" tall.
1434	A Horace Elliot Arts & Crafts pottery bowl having blue and white design, 11" diameter (large crack).	1449	Three blue and white bowls to include; Copeland Spode Italian (a/f), John Tams Ltd Crown pottery bowl, etc.
1435	A Royal Doulton flambe vase, signed.	1450	A hand painted Gray's Pottery jam pot designed by Susie Cooper.
		1451	A Charlotte Rhead Bursley ware leaf shaped dish, pattern no. TL3 Trellis, shape no: 447, 9 1/2" x 10".
		1452	A hand painted Tile titled 'Through The Woods' depicting a forest scene with a single figure, impressed mark 'Copeland' to back, 16 1/2" x 8 1/4", (sadly broken in two with corner missing).
		1453	A quantity of china to include; a part Branksome coffee set, Poole 'Beetle' trinket dish, pottery salt & pepper, a three sided shell serving dish, etc.

1454	A small quantity of miniature/small china items including; Davenport 'Imari' pot (no lid), ceramic jelly mould, Coalport 'Walnut' cot, Royal Doulton jug, articulated dolls, etc.	1472	A mid 19th century Staffordshire cow creamer in Yorkshire sponged colours with over glaze (firing crack to front leg), 6 1/2" x 5" tall.
1455	A small quantity of china including; two Derby plates, Minton Hollins & Co tile, Royal Crown Derby posies bowl and tea strainer, Minton dish, etc.	1473	An early 19th century cow creamer in over glazed red ochre on bocage base, 6 1/2" x 5" tall.
1456	A quantity of china including bird ornament, salt and pepper pots, bell, cups, saucers etc.	1474	A Whieldon, circa 1820, cow creamer having pail beneath her udders. 7" x 4 1/4" tall.
1457	A Royal Worcester four place setting part Dinner/Tea service in "English Garden" pattern.	1475	A lustre cow creamer, circa 1830 (horn tip damaged), 7 1/2" x 5 3/4" tall.
1458	A Moorcroft "Pink Magnolia" table lamp, 12" tall.	1476	A 19th century cow creamer having over glazed sponge decoration, 6 3/4" x 5 1/4" tall.
1459	A Llanelly Pottery "Cockerel" Plate, 9 1/2" diameter.	1477	A blue and white willow pattern transfer printed cow creamer, circa 1830, having gilt horns and tail (small chip to lid), 7 1/2" x 5" tall.
1460	A Royal Worcester "Summers Day" figure, modelled by F.G. Doughty.	1478	A 19th century Staffordshire cow creamer having over glazed sponged colour, 6 1/2" x 4 3/4" tall.
1461	A Royal Albert 'Old Country Roses' dog bowl and floral and yellow matching vase and jug.	1479	An unusual mid 19th century Staffordshire piebald horse on bocage base, 5 1/2" x 5" tall, (repaired - as found).
1462	A quantity of china including Beswick salt & pepper, crested ware, meat plates, Studio Pottery celery vase, etc.	1480	An early 19th Century Staffordshire zebra (chip to base), 5 1/2" x 6 1/8" tall.
1463	A set of four graduated Gaudy Welsh six sided Jugs plus a similar set of two, (some chips and hairlines).	1481	A Staffordshire cow with calf, circa 1840, 6" x 4 3/4" tall.
1464	Three pieces of T.G. Green ware, a small old blue and white bowl and a 19th century blue/white coffee/chocolate pot (lid chipped).	1482	A Staffordshire flatback/cow creamer in ochre decoration with calf at her feet and milkmaid in attendance (lid missing) 9" x 7 1/2" tall.
1465	A blue/red Japanese Imari vase, (base cracked) and a large green glaze Pottery Vase, C.H. Bannam, Barum marked to base.	1483	Three Barcino mosaic ceramic Bulls.
1466	A pair of old Chinese Apothecary blue/white jars.	1484	A Staffordshire figure of a curly horned ewe with a lamb at her feet, 4 1/4" x 4 1/4" tall.
1467	A quantity Villeroy & Bosh 'Melina' teaware including ten cups, twelve saucers, twelve side plates and a milk jug.	1485	An early Staffordshire figure of a lamb, 2 1/2" x 1 3/4" tall., chipped to base.
1468	Three part teaset including Rosalyn, one white decorated with floral borders and one in pink with gilt decoration.	1486	Two Staffordshire Stirrup Cups, circa 1850, in the form of dogs heads (one with cracked rim), both 4 1/2" long.
1469	A quantity of Royal Albert 'Old Country Roses' including; cups, saucers, jug, cake, sandwich plate, etc.	1487	A mid 19th century Staffordshire spill dog, 12 1/4" tall together with a larger pair of mantle Spaniels (both a/f).
1470	A small quantity of china including; pin dishes, display plate, ash tray, Royal Worcester, Wedgwood Jasperware, Coalport, etc.	1488	An unusual early 18th century Staffordshire begging spaniel (some damage and restoration), 3 1/2" tall.
1471	A Staffordshire cow creamer, circa 1850, in transfer printed blue and white willow pattern 7 1/2" x 5 1/2" tall.	1489	'Samson': A Staffordshire figures of a dog on a bocage base, circa 1840, 2 3/4" tall.
		1490	A small Staffordshire black and white spaniel having gold collar and padlocks, 3 3/4" tall.
		1491	A Staffordshire spaniel with ochre patches, 6" tall.
		1492	A Staffordshire seated hound spill vase on blue base with rabbit at its feet, 7" x 5 1/4"

	tall.		Belleek shell dish.
1493	A pair of Staffordshire mantle spaniels having gold lustre flecks, collar, padlock and chain, 8 3/4" tall (both a/f).	1512	A small quantity of oriental china including R.C. Made in Japan Teaset for one, crackle glaze jar, pair of bud vases, etc.
1494	A 19th century Staffordshire fox spill vase having bocage decoration, 4" x 3 1/8" tall.	1513	Four Coalport "For King and Country" limited edition Figures modelled by John Bromley: 'Soldier', 'Airman', 'Sailor' and 'Land girl'.
1495	A Staffordshire spill vase, circa 1860, in the form of a swan group having bocage decoration, 5 1/2" x 4 3/4" tall.	1514	A ceramic lattice Basket with pomegranates, hand-made and painted in Italy.
1496	A pair of spill Vases in the form of a young girl and boy with baskets on their backs (some hairline cracks), 7" tall.	1515	A Noritake Royal Blue Dinner Service.
1497	Two small ornaments of young children beside green tree trunk/vases; one with applied bird and flowers with glazed base stamped 'N'.	1516	A Portmeirion "The Seasons Collection" Tea set and a Quantity of Thomas Germany tea and dinner ware.
1498	Three Dresden porcelain lace figures including; a dancer, maid with basket and a country couple (all a/f).	1517	A small quantity of china. Including Border Fine Arts Studio, James Herriot's Country Kitchen butter dish and letter rack, a Cream Devon Lettuce leaf with rabbit plate etc.
1499	A Staffordshire figure of Dolly Pentreath - the last Cornish woman to speak the language, 7" tall.	1518	A quantity of china including; Royal Standard 'Honey Bunch' part Teaset, two Portmeirion 'Summer Strawberries' cups & saucers, plus Cottageware butter dish, cruets, etc.
1500	A vintage Scottie Wilson for Royal Worcester mug in swan design.	1519	An Adams "Landscape" blue and white dinner service including; three graduated meat plates, six dinner, breakfast and side plates, gravy boat and two vegetable tureens with lids (one a/f).
1501	A Farmers Arms 'God Speed the Plough' two handled mug (a/f).	1520	A Japanese bone china coffee set to include; coffee pot, ten cups & saucers, sugar bowl and milk jug, together with another coffee set.
1502	An early Staffordshire character jug, possibly 'Sairey Gamp' 4 1/2" tall.	1521	A small quantity of china, including Coalport & Doulton posies, Limoges hinge lid trinket/pill box, etc. plus a blue glass vase and a bird paperweight.
1503	A Staffordshire character jug featuring Lord Wellington and General Hill 5 1/4" tall.	1522	A pair of large Staffordshire Pottery Dogs, No. 3 painted on base, one with Beswick label remnant, 10" high.
1504	A Staffordshire character jug of William Gladstone, circa 1868, 8 1/2" tall.	1523	A pair of large Beswick Staffordshire dogs, marked '1378' on base, 9 1/2" high.
1505	An early 19th Century Pratt type Staffordshire Toby jug 'Sir Toby Philpot' (firing crack to clay pipe) 10 1/4" tall.	1524	Two pairs of small Beswick Staffordshire Dogs; black and white spaniels marked '1378-6' and white and gold spaniels also marked '1378-6', 5 1/2" high.
1506	A blue Wedgwood Jasperware jug, circa 1910, 5 1/2" tall.	1525	Five Staffordshire lustre jugs, circa 1880, having gold glaze with Dancing ballerinas and blue glaze details. ****
1507	A Minton Majolica candlestick of three monkeys forming a tree, date stamp for 1861, Reg No: 128616, 8 3/4" tall.	1526	Two boxed sets of Crown Staffordshire 'Postman Pat' nursery ware, 1984 set and Royal Doulton Bunnykins plate and porridge dish
1508	A mid 19th century Majolica cheese dome, possibly George Jones or Minton but no distinguishable marks, base 8 1/2" diameter, 7 1/4" total height.		
1509	A Doulton Lambeth Tobacco jar, circa 1885, having baskets of flowers forming patterns on a fish scale ground (large repair to one side) 5 3/4" tall.		
1510	Eight Royal Doulton dogs to include puppies in baskets, terriers etc.		
1511	A quantity of china including Davenport Bradex 'Cries of London' display plates, three Royal Doulton 'Nursery Rhymes' plates, two Belleek cups and saucers and		

1527	A Royal Doulton 'Gold Concord' part Dinner and tea service to include eight dinner plates, eight side plates, six dessert plates, eight bowls, gravy boat and dish, oval serving plate, teapot (lid a/f), three cups and six saucers (plus one similar 'Delacourt' cup) and a milk jug, together with similar Royal Doulton 'Signature Gold' four tea cups and saucers.		'Blue Boy' plate.
1528	A bulbous vase, grey/blue (stone colour) - brown with geometric incised decoration, 8 1/4" tall.	1544	A small quantity of china to include; a pair of Japanese vases, five Poole pottery soup dishes with lids, a Czechoslovakian gold rimmed fruit bowl and six pudding dishes and a modern Majolica style asparagus ashtray.
1529	A Maling floral table lamp, lusterware (needs rewiring) 10" tall.	1545	A box of mixed small Wade animal figures including; squirrel, tiger, lion, etc.
1530	A part 'The Whithall China' Teaset to include teapot, teapot stand, nine cups, eleven saucers and a milk jug	1546	Four Wedgwood 'Peter Rabbit' mugs, a Royal Doulton 'Bunnykins' money box and 'Peter Rabbit's Little Library'.
1531	A pair of Crown Devon Vases, blush ivory with floral spray design, 12 1/4" tall.	1547	A small quantity of china including a Laura Knight George V coronation Mug, Queen Victorian 1887 Jubilee cup, etc.
1532	A Doulton Lambeth Vase, with blue base and neck, the body decorated in gold, turquoise and white, 9 3/4" tall.	1548	A quantity of Staffordshire 'Midwinter' dinner ware to include; seven dinner and side plates, six eared soup bowls and saucers, six dessert bowls and eight dessert plates, six tea cups and saucers, meat plate, two lidded vegetable dishes and a sauce boat.
1533	Two blue and white Wade Temple Jars of hexagonal shape.	1549	A Denby 'Marrakesh' dinner service including; dinner and breakfast plates, pudding dishes, lidded serving dishes, oval dishes, meat plate and sectional serving dish.
1534	A Minton "Jasmine" part Teaset.	1550	A Denby 'Marrakesh' Teaset for six including teapot and cake stand, (lid missing from sugar bowl).
1535	A quantity of part teaset including Wedgwood "Hathaway Rose" and "Gardenia" and Royal Albert "Old Country Roses".	1551	A quantity of Denby 'Marrakesh' tea and coffee ware.
1536	A quantity of Coalport and Wedgwood Christmas display plates.	1552	Three Royal Crown Derby 'Olde Avesbury' plates; (being two dinner and one breakfast plate which is a second).
1537	A quantity of Bradex and other display Plates including "Life on the Farm" series, etc.	1553	A quantity of miscellaneous plates including; Wedgwood leaf hors d'oeuvre, Oriental in blue and orange having sprays of flowers on underside, Wedgwood 'Kruger National Park' display, etc.
1538	A quantity of dinner and display Plates including Coalport, Royal Doulton, oriental, etc. plus a Masons "Mandalay" wall Clock plus Crown Devon hand-painted display plate (crazed).	1554	A Majolica crab plate, 10" diameter.
1539	A Beswick "Betsy Trotwood" Mug.	1555	A quantity of china including; Burleigh 'Calico' creamer, Martin Homer Studio Pottery mug and plate, Bridgewater 'Blue Hens' jug (chip to base), Delft red stein mug, dressing table tray and pots, etc.
1540	A quantity of part tea and coffee services including Wedgwood "Isis", Delphone white and gold, gold lustre, etc.	1556	A small quantity of ornaments including' three Nao polar bears, Studio Pottery dish with mouse, blue & white bud vase having silver rim, Country Artists owl, Clown, etc.
1541	A quantity of china including nursery money boxes, Wedgwood Jasperware cutlery handles, Hammersley trinket pots, Portmeirion clock, glass decanter stoppers, etc.	1557	A Phoenix ware Coffee set for six including cups and saucers, cream and sugar jug, plus a Sandon Teaset with six place setting.
1542	A small quantity of china to include; Dartmouth cockerel, vase with bird decoration, Mason's Ironstone picture frame and an 'Arch' St Ives coffee set.		
1543	A set of eight Limited Edition Wedgwood Bradex 'Country Panorama' plates by Colin Newman, a Capo-di-monte 'England's Rose' plate and a Gainsborough bone china		

1558	A large Aynsley "Imperial" bowl and pair of Fenton "Olde Foley ware" Vases.	1574	An Alfred Meakin 'Bleu De Roi' coffee pot, six Espresso cups & saucers, milk jug and sugar bowl.
1559	A large Royal Doulton Bedroomware Bowl in blue, white and gold, a blue and white medium Bowl and a blue and white Victoria ware Ironstone bowl.	1575	A quantity of miscellaneous china including; Derby Posies bud vase & ring dish, Royal Worcester 'Diana' coffee pot (lid a/f), small Corona ware 'Corea' vase, Aynsley 'Wild Tudor bowl, etc.
1560	A large Victoria blue and white Meat Plate, similar Cheese Dish, pair of "Botanical Beauties" bowls and a blue and white Condiment set on wooden base.	1576	A quantity of china including; Burleighware fruit set, musical novelty decanter, Brixham Pottery vase, leaf jug, John Maddock 'Sunset ware' bowl, etc.
1561	A large blue and white Oriental Planter and stand.	1577	A quantity of Fairy theme display plates and figures including; Wedgwood, Shudehill, Leonardo, etc.
1562	A Susie Cooper "Romance" green Tea for Two comprising teapot, two cups and saucers and tea plates, cream jug and bowl.	1578	A quantity of plates and dessert dishes including; Delphine china, Foley, Myott, etc.
1563	A quantity of Masons Ironstone 'Chartreuse' china to include; three dinner plates, square ginger jar (6" tall), lidded tureen with ladle and stand and a Cheese dish and stand in 'Ascot' pattern.	1579	An octagonal blue and white meat plate, with willow and peonies/chrysanthemums by a fence, some chips, 16" x 13".
1564	A quantity of Masons Ironstone 'Chartreuse' china to include; a ginger jar (7" tall), two jugs, a vase, sweet dishes, trinket dishes and coasters.	1580	A pair of blue and white floral chargers decorated with peonies and foliage and decoration to the underside, one damaged with staple repairs, 12 1/2" diameter.
1565	An Oriental tea service for six, white ground having dragon decoration with head of Geisha girl lithophane to cup bases. (Bread and butter plate chipped, saucer repaired).	1581	A Chinese Ginger jar, with lid, with Prunus decoration and 'windows' of vases and furniture etc., character marks to the base, 8" tall.
1566	A set of four Royal Albert 'Old Country Roses' dinner plates, 10 1/4" diameter.	1582	Blue and white matched set of white tea cups and saucers with gilt rims, decorated with house and fence, bridge and trees etc., including six cups (one cracked) and four saucers, some damage.
1567	A pair of continental Majolica Fishermen figures, 9" tall, a/f.	1583	Three pieces of blue and white china including a helmet creamer with stylized bamboo handle, a dish, and a lidded sucrier with berry finial and twist handle, repairs to lid (matched to previous lot).
1568	A large 'Westerwald' German stoneware pitcher moulded with figures, 13 1/2" tall.	1584	Three pieces of Oriental blue and white china including a Chinese vase decorated with peonies and four toed dragons, four character marks to base, repaired, vase converted to lamp base with temple and trees, character marks to base and a prunus ginger jar, no lid.
1569	A quantity of Duchess bone china in autumn leaves pattern including; sandwich plate, milk jug, 6 cups, 5 saucers and 6 plates.	1585	Three items of blue and white china including a helmet creamer (5 1/2" tall), small sauce boat with twist handle, 3 1/4" high and a teapot with oriental village scene, gilt details and twist handle, 6 1/2" tall, all items with some damage.
1570	A Retro pastel coffee set including; coffee pot, six cups & saucers and milk jug.	1586	Five plates including two blue and white plates decorated with Sphinx and Greek key border and three red, blue and gilt pattern plates with floral and foliage design.
1571	A George Jones & Sons Crescent part Teaset including; six cups & saucers, six tea plates, sandwich plate, milk jug and sugar bowl, some a/f.		
1572	A quantity of china to include; three Staffordshire bone china soup bowls with plates, a Wedgwood 'Bognor' teacup & saucer, plus a quantity of Mason's 'Strathmore' tea and dinner ware.		
1573	A quantity of china including; J & G Meakin, H & K Tunstall, Crown Ducal ware, Crown Devon including sandwich sets etc.		

1587	Three blue and white Delft plates with fence and floral decorations and a terracotta colour rim.	1599	A Majolica wood effect planter without glass dome, Dartmouth Gurgle jug 'Devon 4 England' to base, Cabbage salad bowl and vegetable servers, Sadler cucumber dish and dishes etc.
1588	Five pieces of blue and white china; village river scene plate, heavily decorated floral and foliage design plate, matched pair of saucers and another.	1600	A quantity of china to include a Victorian Hat pin holder, 'Old Westbury White Horse' cup, 'T.F. & S.L. England' Dressing table tray, trinket box, ring holder and candlestick, USSR sitting Zebra, Royal Doulton 'Diana', 'God Save The Queen' ornament, commemorative ware beaker, etc.
1589	A small quantity of plates including a Coalport plate with raised turquoise leaf decoration, two T.C. Brown, Westhead, Moore & Co. blue and white plates decorated with bugs, Crown Staffordshire bowl for Tiffany & Co. New York (some wear), five white Coalport saucers etc.	1601	A set of four oriental, graduated sitting Ducks in turquoise glaze, from 4 1/2" tall to 8" tall.
1590	A collection of plates including four blue and white Willow pattern plates, a Delft floral pattern plate with yellow rim (some damage) set of five blue and white oriental plates of a village scene with trees and boats, one chipped, the other cracked.	1602	Six china Jugs including small Quimper, Prinknash, copper lustre, etc.
1591	A blue and white Willow pattern meat plate together with a Willow pattern saucereen.	1603	A quantity of china including blue and white Abbey coffee cans and saucers, Italian Spode tea plates, Alphabet mug, etc.
1592	Two blue and white Willow pattern meat plates, one 'warranted Staffordshire semi china' a/f.	1604	A set of eight Wedgwood Bradex 'Colin Newman's Country Panorama' display plates.
1593	A 1960's West German ceramic lamp with original shade.	1605	A set of eight Royal Albert 'A bouquet for the Queen Mother' display plates.
1594	Six Lilliput Lane models, Village School, Rustic House, Ash Nook, Riverview, Clover Cottage and Golden years.	1606	A Portmeirion Studio "Torn" sixteen piece set comprising four mugs, four salad plates, four bowls and four dinner plates, boxed.
1595	A quantity of Royal Doulton collectors plates to include an Old Country Crafts 10 1/2" plate and fourteen Old Country Crafts, Susan Neale 8 1/2" plates, The Toymaker, The Lace Maker, The Blacksmith etc., and The Village Green, Nick Bensley 8 1/2", with certificates.	1607	A quantity of display Plates including two peacock design chargers, Royal Albert "Cottage Garden Year series", three Bradex "Along an English Lane", etc.
1596	A quantity of Bradex collectors plates to include eight 'Thomas Kinkade, The Spirit of Life' 8" plates and six 'Thomas Kinkade, Lamplight Memories' 8" x 6" plates, with certificates and with two plate display racks for 'Lamplight Memories' and 'Lamplight Village'.	1608	A quantity of china and glass including Portmeirion "Totem" vase, Wade whimsies, Masons ginger jar, Caithness "Debutante" paperweight, crystal clock, etc.
1597	Twelve Davenport collectors plates 'For All Time' with accompanying Halcyon calendar display rack for each month with dates, a complete set, plus two Wedgwood 'Christmas Companion plates', 8", all with certificates.	1609	A Worcester "Herbs" tea and dinner service including dinner plates, bowls, two mugs, egg cups, etc. (49 pieces).
1598	A quantity of china to include a Delft bowl, six Myott Staffordshire 'Lynton' dinner plates, four dessert plates and a serving plate, a black and gold 'Spathas' vase and plate, Swinnertons 'The Ferry' blue/white oval serving plate, Lustreware mug etc.	1610	A Shelley part Coffee Set for two, with ground with floral detail, pale pink handles and rims, comprising coffee pot, cream jug, sugar bowl and two cups.
		1611	A Beswick Trout, 6 1/2" tall.
		1612	A pair of "Ayame Seien Japan" porcelain Iris Vases, 12" tall.
		1613	A quantity of china including Braithwaites fairy lusterware, Cumbria Jug, two Nao ducks, Doulton 1911 Coronation mug, Wedgwood Jasperware trinket pot, etc.
		1614	A Copeland late Spode blue Jasperware Teapot,

- 1615 A quantity of Villeroy & Boch 'Valeria' dinnerware and teaware to include ten dinner plates, twelve side plates, five coup dishes (and saucers), one small lidded tureen, three square and one oval serving dishes, two oval serving plates, teapot, sugar bowl and milk jug, bread & butter plate, circular plate and a candlestick.
- 1616 A quantity of china including blue and white willow pattern meat plate, cake stand, studio pottery mug and jug set, etc.
- GLASS**
- 1621 A quantity of glass including champagne bowls with coloured stems, lemonade set, ruby red glasses, etc.
- 1622 A quantity of glass including a floral decorated fruit set, frosted pink glass bowl and comport etc. plus small quantity of china including Wade tortoise, Wedgwood trinket box etc.
- 1623 Eight cut glass brandy goblets (6 matching).
- 1624 A Whitefriars tangerine bark vase, 7 1/2" tall.
- 1625 A handkerchief vase, Channel Island ruby vase and a preserves jar.
- 1626 A vintage glass lamp shade yellow mottled effect 8" diameter.
- 1627 A heavy quality slice cut glass decanter including stopper, an early 20" hand blown engraved Decanter with leaves, and a 19th c. tall celery pedestal vase engraved with ferns 7" tall.
- 1628 An Isle of Wight Alum bay hand blown vase in shades of orange and yellow 11" tall.
- 1629 Three glass lamp shades and a pink glass dressing table set.
- 1630 A quantity of 1930's/40's Art Deco amber Cloud glass to include posy bowls, 'Parfait' vase, large footed bowl on stand with flower dome etc, some attributed to George Davidson.
- 1631 A quantity of 1930's/40's Art Deco amber Cloud glass to include boat shape fruit dish, four octagonal sided plates, pair of candlesticks etc, some attributed to George Davidson.
- 1632 A small quantity of 1930'/40's Art Deco mauve Cloud glass including posy bowls, pair of candlesticks, a Sowerby style bowl etc some attribute to George Davidson.
- 1633 A Briar-Topaz Cloud glass shallow footed bowl 9 1/2" diameter and a mauve 'Column' Cloud glass vase 10" tall, both attributed to George Davidson.
- 1634 Two pieces of Art Deco 1930's/40's blue Cloud glass to include a centrepiece bowl with matching stand 8 1/2" tall (including stand) and a hexagonal sided bowl 11" wide; both attributed to George Davidson.
- 1635 Three pieces of Art Deco 1930's/40's blue Cloud glass various sized bowls with rolled rims 7"-11" diameter; attributed to George Davidson.
- 1636 A quantity of paperweights including; pink floral Murano, Millefiori, blue yellow & green, one having a scene of Clifton Suspension Bridge, etc.
- 1637 A blue and clear glass perfume bottle having Sterling silver collar and rim, 5 1/2" tall including stopper.
- 1638 A small quantity of antique coloured glass including; Bohemian fairy lamp shade, vaseline Jack-in-Pulpit vase, cranberry scent bottle (a/f - missing stopper), 'Empire Exhibition Scotland 1938' souvenir plate, etc.
- 1639 A small quantity of antique glass including; 19th Century custard cups, panel cut rummer glass on wide foot and a fern engraved jug.
- 1640 A ruby glass brass caged Trinket box.
- 1641 A quantity of glass including trifle bowl, fruit bowl, vases, etc.
- 1642 A 19th century green glass wine cooler and a small green glass jug.
- 1643 A signed 'Daum Crystal' Ashtray and a cut glass fruit bowl, 8" diameter.
- 1644 A Quantity of glass. Including Waterford fruit bowl (small chip to rim), a Webbs vase and whiskey tumblers with matching water jug etc.
- 1645 A pair of modern Faberge 'Kissing Doves' champagne flutes.
- 1646 Three glass Decanters.
- 1647 A pair of Tudor crystal square decanters with mushroom stoppers.
- 1648 Five Royal Doulton 'lunar' champagne/wine glasses and a set of eight cut glass wine glasses.
- 1649 Five decanters including one with etched hunting scene (fox hunting bird), pair of decanters, one having silver 'Martini' decanter label etc.
- 1650 A quantity of cut glass hock, whisky and wine glasses.
- 1651 Two each of Decanters, carafes and claret Jugs (one carafe being by Stuart), plus flower basket, etc.
- 1652 Four cut glass decanters and two rose bowls.



- 1653 Three decanters including; square, mallet shaped, etc. plus a Stuart Crystal bowl.
- 1654 A small quantity of glass including; perfume bottle having silver collar, cruets, oil/vinegar jug and an old bottle marked 'Jackson Littleover'.
- 1655 A bulbous Studio glass vase having white interior overlaid by clear amber glass, together with a large modern decanter in clear amber to red colour.
- 1656 Six Crystal aperitif glasses and four navy Brandy glasses, gold rimmed.
- 1657 A box of glass including nine green glasses, two cranberry, Bristol cobalt blue "Hollands" Gin Decanter with stopper and art nouveau blue vase.
- 1658 Four pieces of glass to include; Crystal fruit bowl and vase and two Wedgwood bud vases.
- 1659 A quantity of beer glasses including; Studio and smoky tankards, lager glasses, etc.
- 1660 Six small Waterford crystal tumblers (two a/f).
- 1661 A quantity of glass including; six hobnail cut out wine glasses, four Webbs brandy glasses, illusion glasses, jug preserve pot, paperweights, cruet, ruby red bud vase, etc.
- 1662 A quantity of glass including; cut glass rose bowl, trifle bowls, dressing table tray, Studio glass vase, etc.
- 1663 A large quantity of glass to include Stuart posy vase, Cranberry jug with pontil mark, four uranium green Art Deco grapefruit bowls, sugar shakers etc.
- 1664 A quantity of assorted paperweights to include Caithness 'Cauldron', Caithness 'Moon Crystal', Selkirk 'Carnival' etc.
- 1665 Three 1950's Art Deco glass lampshades, one being milky glass with orange streaks, edge a/f.
- 1666 A pair of 'Lovers Decanters' crystal glass decanters, each decanter 11" tall x 4" wide, complete with original box.
- 1667 A very heavy cobalt blue square glass vase with slightly curved form, 14" tall, 5" square.
- 1668 Glass vase with pie crust rim and stretched vertical clear bubbles, 12 1/2" tall, 6 1/4" wide.
- 1669 A heavy Czech style tapered glass vase, with plum, pink and cream close packed swirls and streaks. Has a concave base and a minor scuff near rim, 11 1/2" tall 5 3/4" wide.
- 1670 A thick heavy mottled glass vase in brown, cream and greyish blue with polished concave base and thick inverted rim, 14" tall 6 3/4" wide.
- 1671 A very heavy vintage tall square glass vase in white snowflake effect with an applied red floral design with black tapered stem and has polished round pontil 13 1/2" 4 1/4".
- 1672 A tall clear glass goblet style vase with long twisted stem, 19 1/2" 5" wide.
- 1673 A Murano glass swan with base label "Vetro Artistico Veneziano" in red and cased with lemon standing on swirled clear crystal base, 7 3/4" tall 3" wide together with a Murano glass swan with red core and cased in lemon with clear beak, 8 1/2" tall 5" wide.
- 1674 A 1930's Whitefriars conical shaped amber glass bowl by Barnaby Powell having spiralled trails and dark amber base polished runt pontil, 8 1/2" wide 3 3/4" tall.
- 1675 A very large French Art glass bowl with attached label in French stating it is entirely hand made. 27 1/2" long 10 1/4" wide 9 3/4" tall.
- 1676 A " Riihimaki" red glass vase designed in 1963 by Tamara Aladin and having a thick curved base, 11" tall.
- 1677 A very heavy red tapered Art Glass vase with deep clear concave base containing four floating bubbles. 12 3/4" tall x 5" wide.
- 1678 A small quantity of glass including Webbs fruit bowl, vases and pressed glass basket.
- 1679 A Murano style glass clown

## FURNITURE

- 1681 A Mahogany Kneehole Desk having three frieze drawers, the pedestals with three short drawers and a cupboard, all with brass swan neck drop handles, the top with three inset leather panels, 48" x 24" x 31" long, the panels to either side being raised and fielded.
- 1683 A Mahogany cased Longcase Clock having an arched door and mirrored swan-neck pediment, the arched painted face with a nicely detailed hunting scene, gilded and floral corners and having Arabic numerals, the maker being "Potts, York", running at the time of lotting, 19 1/8" wide x 9 1/4" deep x 89 1/4" high, striking the hours on a bell, and with inset second hand and date register.

1684	Two fine quality shield back Chairs, (one an armchair), the fretworked splats and backs inlaid with swags and bows, the over-stuffed seats having serpentine fronts and raised on tapering square legs terminating in spade feet and with dark-wood stringing.	1695	A contemporary Mahogany Side/Dining Table having a frieze drawer to one side and a drop leaf supported by swivelling, 35 1/4" x 19 1/4" extending to 35 1/2" x 29" high.
1685	A Mahogany wall hanging corner display cabinet having a pair of opposing seven pane glazed doors and with a mirrored scroll pediment, 42" high x 24" wide approx.	1696	A set of four contemporary sabre legged Dining Chairs with top rails simulating the rope ratlines of a ship's rigging and having crimson and beige striped upholstered seats.
1686	Three classic Georgian design Mahogany side/dining chairs (two with damage) with drop in seats.	1697	Three boxwood strung Mahogany framed side Chairs standing on tapering square front legs and having lattice backs and striped pink beige and green upholstered drop-in seats.
1687	An Eastern hardwood Oriental altar type Table having two frieze drawers and a pair of opposing drawers below, 40 7/8" wide x 17 5/8" deep x 33 5/8" high.	1698	A Georgian Satinwood/Fruitwood side Table standing on chamfered square legs and having a frieze drawer, 30" x 19 1/4" x 28" high.
1688	A good quality Cabinet maker made Mahogany bow fronted Corner Cupboard having inlaid shell detail, contrasting light and darkwood frieze, boxwood stringing, the opposing pair of two panelled doors opening to reveal an interior with shelves and three drawers below, 29 1/2" wide x 44 5/8" high.	1699	A contemporary boxwood beaded Mahogany Chest of two long and two short Drawers of diminutive size, standing on bracket feet, 23" wide x 18" deep x 24 1/4" high.
1689	An arts and crafts type bow-back Boxwood strung Mahogany framed Elbow Chair having fretworked and turned details, slender turned front legs terminating in pad feet, the seat upholstered in dusky pink dralon/velvet type fabric.	1700	A good quality boxwood beaded Mahogany semi-circular Side Table standing on tapering square legs and having a central bow fronted frieze drawer, 36" wide x 18 1/4" deep x 28" high.
1690	A compact Mahogany Sideboard having a frieze drawer and a pair of opposing drawers below, the shaped upstand incorporating a shelf, 36 1/4" wide x 17" deep x 55 1/2" high.	1701	A circa 1900 Mahogany semi-circular Side Table standing on tapering square legs terminating in spade feet and having a bow fronted drawer with a brass drop-ring handle, 36 1/2" wide x 18" deep x 28 7/8" high.
1691	A four panel peg-joined Oak Blanket Chest standing on bracket feet, 59" x 24 1/2" x 29" high.	1702	A large Oak Dining Table standing on substantial turned legs united by a "H" stretcher, 81" long x 48" wide x 29 5/8" high.
1692	An Oak cased Longcase Clock by Carter, Salisbury, the 30 hour movement striking the hours on a bell, having a painted face with Roman numerals, inset date register, the corners having polychrome depictions of floral sprays, 18 1/2" wide x 10" deep x 78 1/2" high, (running at the time of lotting).	1703	A set of six Oak framed Dining Chairs including a pair of carvers, all having repeated knob turned details and drop-in brown leather upholstered seats. (one diner back damaged).
1693	A Mahogany framed open armed Elbow Chair with a striped upholstered drop-in seat and a lattice pattern back splat.	1704	An Oak Hall Seat having a locker base, the arms with apertures for sticks, 34 1/2" wide x 13" deep x 34 1/2" high.
1694	A Victorian Mahogany Sideboard having three frieze drawers and a triple doored cupboard below, complete with a scroll surround pediment/upstand, 58 1/2" wide x 20" deep x 60" high.	1705	A Mahogany dining Table having double pedestals with swept reeded legs terminating in brass capped castors, 45" x 73" extending with one leaf to 91" and 29 3/4" high.
		1706	A Mahogany bow fronted Cabinet having a pair of opposing doors with oval Boxwood stringing, standing on splay bracket feet and having an upper frieze drawer, 30 1/4" wide x 18" deep x 31 3/4" high.

1707	A Mahogany dressing Chest of two long and two short Drawers, having a rectangular bevelled swing mirror, 39 1/2" x 17 1/2" x 58" high.	1720	An Oak locker top Stool/occasional Table standing on turned legs united by perimeter stretchers and having a front frieze with a stylised flower bloom and foliage, 20" x 13 3/4" x 14 5/8" high.
1708	An Oak and Satinwood Purdonium with a brass drop handle, 15" wide x 14 1/2" deep x 29" high.	1721	A pair of Oak framed Bedroom Chairs having fretworked cross-splats, tapering square front legs and woven seagrass seats with tie-on pad cushions.
1709	An Oak Monks Seat having a locker base, the arms supported on bulbous turned supports, 42" wide x 21" deep x 40 1/2" high (backrest up) m the table top (backrest folded down), 42" x 19" x 31" high as a table.	1722	A possibly Edwardian Mahogany framed Bedroom Chair having turned front legs and details to the back, the seat having inset pink/beige upholstery.
1710	An Oak snap-top Occasional Table, the square top raised on a turned pillar with three splay feet, 25 7/8" x 23 7/8" x 22 3/8" high.	1723	A set of four solid wood seated Ercol Dining Chairs having stick backs and green upholstered pad cushions, one being a carver chair.
1711	A Mahogany four tier Etagere having turned supports, 19 7/8" wide x 13 1/2" deep x 42 1/8" high.	1724	A most unusual Oak framed Side Chair standing on mirrored twist legs, the back carved decorated with fruiting vines whilst most uncommonly to the back is the well carved depiction of a dogs head, the seat being overstuffed in pink dralon/velvet and with a fitted flora cover, 18 3/4" wide x 19 3/4" deep x 28 1/2" high.
1712	A set of four carved early Oak Dining Chairs having solid seats, the back rests with centre splats carved with depictions of tall flowering plants, the top rails featuring a carved central fearsome fence, the legs united by perimeter stretchers.	1725	A superb "Maple & Co. Ltd" cylinder fronted desk in cross-banded, light and darkwood strung Mahogany, the lid folding back to reveal an interior with six pigeon holes flanked to either side by three small drawers, the slide out writing surface having three inset gold tooled deep mauve leather panes, the central section lifting to provide a sloping surface adjustable for rake by the support and rack beneath, whilst to either side are hinged lidded storage compartments and at the back recesses for inkwells and pens. The kneehole is flanked by a flight of three drawers to the pedestals to either side. A magnificent example of the cabinet makers' skills that has been in the same family ownership for several generations, 54" wide x 30 1/4" deep x 49 3/4" high.
1713	A peg-joyned Oak framed Georgian Commode Chair (unfurnished).	1726	A most attractive Walnut and other woods Marquetry decorated open armed Elbow Chair, the back splat depicting an urn of flowers and foliage, the top rail scrolls and flowering plants, the arms and back supports with trailing flowering stems, the rear of the chair is also beautifully decorated with flowering plants. The chair stands on swept legs terminating in castors and has a tapestry upholstered seat with stylised flower plants depicted against a brown background. There are some
1714	A peg joyned Oak Joynt Stool standing on turned legs with perimeter stretchers, 18" x 11" x 18" high.		
1715	A rectangular Oak Dining Table, the end supports united by a pegged stretcher, 40" x 27 5/8" x 29 1/8" high.		
1716	A delightfully plain Mahogany Sideboard having a pair of frieze drawers and a pair of arched panelled opposing doors below and standing on turned bun type feet, 60" x 18 3/8" x 36 3/4" high.		
1717	A Walnut and other woods Occasional Table standing on a pair of turned supports to either side raised on bases united by a turned centre stretcher, the top with an inlaid chess/draught board, 32" x 16" x 26" high.		
1718	A circular Satinwood occasional Table standing on a turned pillar with three elegant splayed feet, 22 1/2" diameter x 26" high.		
1719	A peg-joyned Oak Settle having a pair of carved panels to the backrest with arch and stylised foliage detail, 40" wide x 18 1/2" deep x 50 3/8" high and having a pegged stretcher to the base.		

	historic repairs and further restoration required.	1734	An Oak Sideboard created from an old coffer and having to the front four shaped raised and fielded panels, the centre pair being on a pair of opposing doors, and with three drawers to the base below, 55 1/2" wide x 21 1/2" deep x 37" high.
		1735	A Mahogany Sutherland Table standing on turned legs, 21 3/8" x 5 1/2" extending to 24 1/2" and 22 3/8" high.
		1736	A shaped top Mahogany occasional Table standing on four shaped legs mounted by a lower shelf, 25 1/2" diameter x 27" high.
1727	An elegant Georgian Mahogany open armed carver/elbow Chair having stylised floral bosses to the backrest, the drop-in seat nicely upholstered with petit point tapestry depicting stylised flowers and foliage and having a shaped apron.	1737	A broad seated Mahogany framed Georgian side Chair having a fretworked backrest and elegant canted cabriole front legs with carved knees and scroll feet, the seat being upholstered in brown ground tapestry and petit point worked to portray a spray of flowers surrounded by scrolls and other blooms.
1728	A hardwood framed Arts and Crafts circular seated Elbow Chair having a six turned stick back, the seat with patterned pierced design.	1738	A Walnut finished china Display Cabinet standing on brief cabriole legs.
1729	An Oak and other woods Arts and crafts circular seated Elbow Chair having eight slender sticks and six turned spindles to the back, the seat with patterned pierced design (remarkably identical to that of the previous lot).	1739	A Mahogany framed lady's Fireside Chair standing on turned front legs and upholstered in lattice pattern green fabric.
1730	A Mahogany framed low open armed Elbow Chair standing on turned front legs and having a woven seagrass seat and intricately patterned strung work to the backrest, 22 3/4" wide x 17" deep x 30 3/8" high.	1740	A two/three seater brown upholstered Settee.
1731	A heavy old Oak Armchair of Bardic/Mayoral design having a solid seat, square front legs extending with turned details to form the arm supports, the arched top rail of the back having large Acorn finials, the arms have Rexine upholstered pads, and there is an associated cushion, 28" wide x 25" deep x 53 1/2" high. ***V.A.T. will be added to the hammer price of this lot.	1741	A Mahogany framed beige upholstered Chair standing on mirrored twist front legs.
		1742	An Oak Hallstand/Settle having a marine flavour with a circular representation of a ship under sail on the high seas and also having upper drawer friezes depicting rolling waves, the seat having lock beneath, umbrella drip trays present, 38" wide x 14 1/2" deep x 73 1/2" high.
		1743	A nest of three oval Oak occasional Tables having twist legs and turned stretchers, the largest 25" x 16" x 27" high having an oval brass engraved "Presented to Percy Smith Brook by Chester friends as a token of esteem and affection, Chester City Club, Fby 23 1924".
1732	A 19th c. cylindrical Mahogany Pot Cupboard having an inset marble top, 16 1/8" diameter x 28 3/4" high. ***V.A.T. will be added to the hammer price of this lot.		
1733	A circular 19th c. Oak snap-top Table, the top 33 1/4" diameter, raised on a turned pillar with three elegant splay feet, 26 3/4" high,		

- 1744 A peg-joined period Oak Duodarn having raised and fielded panels, the upper cupboard section having a fixed central panel flanked by an opposing pair of doors, the base with a large pair of raised and fielded panelled doors, the upper frieze carved RF:ER 1738, 63 3/4" wide x 24 5/8" deep x 68" high. An envelope with the Duodarn postmarked Prestatyn, Flints 17 FE(B) '26 contains a hand written note referring to the Duodarn as follows: "Re: Cwpwrđ Dudarn, Mr. & Mrs. Roberts, 'Tyddyn Huddug', Llanrug, from whom the cwpbwrđ was purchased, are able to trace it back as being in their family for 150 years, being first known to have been the property of Owen Owen, Tyddyn Heuddug about 100 years ago. Owen Owen, on his death passed it to his son Michael Owen & from him it became the property of Mr. Roberts. The cwpbwrđ in the first instance was the property of Grace Evans, Bwlch who passed it to the inhabitants of a farm known as Garnor Bach somewhere about 300 years ago. Though there is no actual proof as to this statement there is no reason to disbelieve it, as all these farms are situated closely together on Cefn Ddu Mountain where the famous Marconi station is now erected". Also in the envelope is a Receipt dated the 11th July 1925 from V.H. Fitzgerald, Antiques, High Street, Prestatyn, Flints stating "To Antique Oak Cwpbwrđ Deudarn - £40".
- 1745 A large Pine scrubbed top Kitchen Table standing on turned legs and having a drawer to one side with a wooden knob handle, 66" x 36" x 31" high.
- 1746 A set of four bar back Kitchen Chairs standing on turned legs.
- 1747 A darkwood strung Mahogany cased Longcase Clock, the eight day movement having a brass face with Roman hour numerals and Arabic minutes, inset second hand and date window, the face having cast brass spandrels and a feature arch with a rocking yacht under sail viewed through a gap between trees, maker "Tho Bullock, Bath", 19" wide x 9 3/8" deep x 90 1/2" high approx, the hood surmounted by three turned finials. The face is 17 1/16" high overall and 12 1/8" wide.
- 1748 A black painted framed Bow back Armchair having shaped fretworked back supports, cabriole front legs, the seat and back upholstered in yellow/peach coloured fabric.
- 1749 A pair of Oak framed open armed Elbow Chairs having turned front legs and "H" stretchers, the seats and backs upholstered with polychrome coloured floral fabric.
- 1750 A veneered Pine carcassed Chest of three long and two short Drawers with drop handles, 39 1/8" wide x 18 3/4" deep x 40 1/4" high, standing on turned bun feet.
- 1751 An unusual bar back solid seated Rocking Chair.
- 1752 An Edwardian Mahogany library/writing Table having an inset toop, a frieze drawer with drop swan neck handles and standing on turned legs, 35 4/8" wide x 20 1/2" deep x 28 1/2" high.
- 1753 A modern flecked grey upholstered two seater Settee, the cushions having reversible plain/foilage patterned cushions.
- 1754 A Mahogany tea Trolley having a lower shelf, the top having drop leaves to convert to a tea table, 24 1/4" x 15 5/8" extending to 36 1/2" approx. and 25" high.
- 1755 A three tier Mahogany wall Shelf having geometrically fretworked side supports and three blind fretwork detailed trinket drawers to the base, 30 1/2" wide x 35 1/2" high and 8 1/2" deep.
- 1756 A carved Oak two panelled Blanket Chest, decorated with repeated arch details and foliage, the two front panels decorated with stylised flowers, 33" wide x 15" deep x 20" high.
- 1757 A brown leather Settee.
- 1758 A four piece Lounge Suite comprising a three seater settee, a pair of chairs and a pouffee, upholstered in polychrome geometric pattern fabric.
- 1759 An arts and crafts circular seated bow back Elbow Chair standing on turned legs with turned cross stretcher and having boxwood stringing and three fretworked splats to the back, 20 1/4" wide x 20 1/4" deep x 29 1/4" high approx.

**Saturday 4th May 9:30am -  
BOOKS, RECORDS ETC**

- 2001 A quantity of books to include Men's Health, Larousse Gastronomique, The Cuisine of Paul Bocuse, Garden Route etc.
- 2002 A quantity of car/racing books to include Rolls Royce Member book, Jaguar etc.

2003	Three SAS Survival books to include Ultimate SAS Survival, The Urban Survival Handbook, The SAS Drivers Handbook, all three having signed dedications by the author SAS hero John Lofty Wiseman.	2018	A tub of books including Pocket Knives of The World, Time's Laughingstocks by Thomas Hardy, Observer's books, Birds' Eggs, Architecture etc.
2004	Two books on fishing, Falkus and Bullers Freshwater fishing 1994 and Hugh Falkus Salmon Fishing a Practical Guide 1989.	2019	A quantity of books, The Immortal Gilbert & Sullivan Operas, Heidi Grows Up, Charles Dickens, Tom Sawyer etc.
2005	A quantity of hardback books to include The Strand Magazine Vol. X, 1908 Kelly's Handbook to The Titled, Landed and Official Classes, Robinson Crusoe, The Pageant of The Century etc.	2020	A set of The New Book of Knowledge Grolier Incorporated, Danbury Connecticut 1998.
2006	A box of books including The Command of The Ocean by N.A.M. Rodger, Finding Longitude, Wings Over The Atlantic by Robert J. Hoare etc.	2021	Two Boxes of Artists' painting books, Watercolour a Step-by-Step Guide, The Complete Oil Painter, How to Draw The Human Figure, Painting with Pastels etc.
2007	A quantity of hardback books to include Cricket, rugby, radio, television and electrical repairs etc.	2022	A quantity of books, some of local interest to include Aspects of Herefordshire, A History of Herefordshire etc.
2008	A large quantity of Transactions of The Woolhope Naturalist's Field Club Herefordshire.	2023	A box of books to include The Mouse Man of Kilburn by James Thompson, Sir Roger De Coverley by The Spectator, John Speed's Atlas of England and Wales 1951 etc.
2009	Sixteen volumes of Letters of Horace Walpole Fourth Earl of Oxford edited with notes and indices by Mrs Paget Toynbee.	2024	A quantity of Sotheby & Co. Catalogues of English Manuscripts, Greek and Italian Manuscripts etc.
2010	A box of hardback books to include Handbook to The Western Cathedrals, From Darkness to Light by Victor Gollancz, Cambridge Described by Arthur Gray etc.	2025	A box of books to include stamps, English historical documents, Book About Books, Basic Bookbinding, Introduction to Typography etc.
2011	A quantity of Travel and Tourist related books.	2026	A box of books on wine to include Wines & Castles of Spain, Encyclopedia of Wines & Spirits etc.
2012	A box of Railway related books including Portrait of The Central Wales Line, On The Settle and Carlisle Route, Rails in The Fells etc.	2027	A large quantity of Transactions of The Bibliographical Society.
2013	A quantity of Railway related books to include Bradshaw's July 1922 Railway Guides, One Man's Railway, English Steam Wagon, a quantity of Great Western Railway Journal etc.	2028	A box of books to include Mansions & Manors of Herefordshire, Local History A Handbook for Beginners, The Wisbech & Upwell Tramway, The Defence of Worcestershire in WWII etc.
2014	A quantity of hardback Railway books to include The Chilterns and Cotswolds, The GWR Stars, Castle & Kings, Great Western Steam in Wales etc.	2029	Books to include Catalogue of Worcester Cathedral Library, Domesday A Search for The Roots of England, Dedications of Monastic Houses in England and Wales 1066-1216, Herefordshire Maps 1577-1800, Sir Samuel Meyrick & Goodrich Court, The Chapter House Worcester Cathedral etc.
2015	A quantity of Railway books to include Loco's of The Royal Road, Rail Routes in Devon & Cornwall, All in a Days Work Life on The GWR etc.	2030	A box of books on local interest to include Fownhope Remembered, Trackway to Turnpike The Old Roads of South Herefordshire, Ledbury etc.
2016	A crate of books in Welsh, The Varieties of Religious Experience etc.	2031	Books to include The Ancient Crosses and Holy Wells of Lancashire, A Canvas to Cover by Edward Seago, Misericords Medieval Life in English Wood carving etc.
2017	A quantity of Cookbooks including Yan-Kits Chinese Cookbook, Cooking for The Freezer, The World Atlas of Wine etc.	2032	Five volumes of The Catalogue of The London Library.

- |      |   |      |  |
|------|---|------|--|
| 2033 | Two boxes of books to include Harry Potter, James Herbert, Celtic Football, Joe Calzaghe, The Sports Car etc.   | 2059 | A framed watercolour depicting Sailing Boats on the water with rolling mountains in the distance, signed lower left R. Christie Smith. |
| 2034 | Two boxes of books including No Rest for Biggles, Space Ship X.5.22, Enid Blyton, The Sea of Adventure, The River of Adventure, Five Get into Trouble etc.                            | 2060 | A wooden framed Acrylic primed painting titled "Autumn Sun" by Gaynor Rosser, 16 3/4" x 20 3/4".                                       |
| 2035 | Three books A-Z Encyclopedia of Garden Plants, David Attenborough Life in Cold Blood etc.   | 2061 | Two framed Pencil Sketches of Abergavenny, initialed lower right G.M.R 1981, one unglazed, 20 3/4" x 16 1/2".                          |
| 2036 | A quantity of books from The Bristol and Gloucestershire Archaeological Society.  | 2062 | A framed mixed media painting of a Harbour Scene, initialed lower right G.M.R., 18" x 11".   |
| 2037 | Four volumes of A History of The English Speaking People by Winston S. Churchill, A Batsford Copy of Gothic England, A Survey of National Culture, The Journals of Thomas Merton etc. | 2063 | A framed Oil on canvas depicting a harbour scene with boats anchored, signed lower right W. Jones, 22 1/2" x 18 1/2".                  |
| 2038 | A crate of books, Tom Brown's School Days, Jane Eyre, Little Faith, The Heart-shaped Ruby etc.  | 2064 | A framed watercolour of a Fishing Town with Three boats moored in the Harbour, no visible signature, 22 1/2" x 17 1/2".                |
| 2039 | An Illustration of The Agriculture and Sculpture of The Cathedral Church of Worcester by Charles Wild, printed by W. Nicol, Cleveland Row, St. James's 1823.                          | 2065 | A large framed and mounted Pencil drawing titled The Church Inn Bedwellty, signed lower right S.M.R. 1990 (Gaynor Rosser), 25" x 21".  |

## **OIL PAINTINGS,**

### **WATERCOLOURS & PRINTS**

- |      |   |      |   |
|------|---|------|---|
| 2051 | An oval Engraving of Cherubs in glomyized glass, a woman and child feeding chickens framed, along with a Print of The Arc-de-Triomphe.  | 2067 | Four prints to include a Venetian Scene, The Gleaners and The Angelus after Millet and a George Oyston country Landscape.                                     |
| 2052 | A framed and mounted Print of The Royal Opera House London 21 1/2" x 18".   | 2068 | A large gilt picture frame, 35" x 27 1/2", plus four additional frames.   |
| 2053 | A wooden framed Print titled 'The Gamblers' by Edwin Thomas Roberts, 21" x 25".   | 2069 | A large oak framed Lithograph 'In Tow' depicting large sailing ship coming into harbour, 27 1/2" x 23 3/4".   |
| 2054 | A framed Oil on board titled 'The Card Players' by Lloyd G Thompson after David Tenners, 25" x 21 1/2".   | 2070 | A large gilt framed Print titled 'Scotland Forever' the charge of the Scots Greys at Waterloo, after the original painting by Lady Butler, 36 1/2" x 24 1/2". |
| 2055 | A wooden framed Pears Style print "Goodnight Father", no Visible Signature.   | 2071 | A gilt framed Watercolour 'The Campanile Venice', signed possibly Anton Perique, 24 1/2" x 15".   |
| 2056 | A framed Oil on board depicting an African landscape, signed lower left Piet Houthnysen?, 28 1/4" x 20".  | 2072 | A gilt framed Watercolour depicting a farm yard scene, signed G. Hall, 23 1/4" x 19 1/2".   |
| 2057 | A quantity of pictures including a Vernon Ward print of a seascape, an oriental picture, a Margaret Ross nursery print, a water colour of a woodland stream and a Continental oil painting of boats moored outside buildings. | 2073 | A large Lithograph Print depicting a canal scene in Amsterdam, signed M. Mill, framed by Fracdis Buffa & FLS (label verso), 24 1/2" x 20 1/2".                |
| 2058 | A framed and mounted Watercolour written verso "On The Thames", signed lower left R.M. Fraser, 19 1/2" x 15"  | 2074 | A framed and mounted Watercolour on paper titled 'Whoops!', signed 'Hawkins' lower left, 17 1/4" x 15 1/2".   |
|      |   | 2075 | A framed Abstract Oil on canvas, signed verso 'P. Firmin', depicting 'White Cyclamen', 12 1/4" x 14 1/4".   |

2076	Two large gilt framed Prints on canvas depicting thoroughbred horses one with a mounted jockey.	2094	A large framed print titled "Playfellows" illustrated 1895 London News after the original painting by Luke Fildes, 31 3/4" x 28".
2077	A framed 1986 Peter Iden (1945-2012) Watercolour of Erpingham Gate, Norwich.	2095	A framed and mounted Watercolour of a Duck with outstretched wings. Signed lower right R.A. Palmer '78, 19 3/4" x 16 3/4"
2078	A framed Watercolour of the River Arun by Ray Turbefield, 21" x 16 1/2" - glass a/f.	2096	A quantity of prints to include "Early Morning at Goring on Thames", Loss of His Majesty's Steam Packet Meteor", etc.
2079	A framed and mounted Watercolour titled 'Distant Train' by Richard Plinckeri, 7 3/4" x 10 1/4".	2097	A wooden framed Watercolour depicting sailing ships and masted ships, no visible signature, 15 1/4" x 12 3/4".
2080	A framed Watercolour 'The Old Door at Skenfrith Church' by Anne Doyle.	2098	An Oil painting of a Marine scene by Jack Merriott, RI, ROI, RSSMA, (1901-1968), 17 1/2" x 13 3/4".
2081	A framed and mounted Limited Edition (No: 76/850) Print by Terry Harrison 'Farnborough Hill', signed in pencil.	2099	A pair of W.F Ashburner prints to include "Herbaceous border" and "A Summer Garden", 21" x 17".
2082	A framed and mounted Da Vinci Print 'Study of Mary Magdalene'.	2100	A modern framed Oil painting of a Street Scene in the style of L.S. Lowry, 31 1/2" x 23 1/4".
2083	A picture of the site of Earls Court Underground Station in the 1860's.	2101	A framed and mounted print "Winter" by Edward Robert Smythe, a print of a Robin, an E. Lear print of Snowy Owls and a Carlson print of a Gentleman walking his dog.
2084	A framed and mounted Watercolour with figures in a Rowing boat, rolling hills in the background. Signed lower right E. Genower, 17 1/4" x 13 1/4".	2102	A large oak framed Print of sailing ships, signed F.J. Aldridge, 28 1/2" x 21 1/4".
2085	A quantity of prints to include Fruit, Diane Elson cats, Limited Edition Lakeside print, John More The Younger by Hans Holbein the Younger, and oil on board of a Still life of Flowers.	2103	A large framed Print titled "Trafalgar 2.30 pm" by W.L. Wyllie, 40" x 28 3/4".
2086	A framed and mounted, Ink and watercolour painting of a Venetian Scene, Indistinctly Signed lower left, 22" x 14".	2104	A framed Watercolour titled EL- Gamamiz Mosque-Cairo signed lower right E Weedon 16 1/4 " x 24".
2087	A framed and mounted Watercolour titled "Leabrink and the River Wye" Signed lower right Mary C. Soulsby 1978, 19" x 15 3/4".	2105	A framed and mounted Limited Edition no. 20/100 Print titled. Autumn Eden Valley by Christina Mingard, 13 3/4" x 23".
2088	A box of unframed Etchings to include; Dunottar Castle, Berwick, Eagle Tower, Carnarvon Castle, etc.	2106	A large Wooden framed print of Queen Victoria, 22 1/4" x 25 1/2.
2089	A wooden framed Oil on board titled verso 'Window on the Zig Zag' by Ron Wright, together with a mounted floral painting (no visible signature) and an unframed Oil on board depicting Tower Bridge London.	2107	A small framed Oil on board titled Verso "Summer Stream", signed lower right, M. Baynham, 10 3/4" x 8 1/2".
2090	A framed Photograph by a renowned Italian Photographer.	2108	A pair of framed Oils on canvas depicting a young boy and girl. Signed lower right Mayer, 10 3/4" x 13".
2091	A wooden framed Oil on board depicting a Bohemian girl after Franz Hals, signed lower right 'Cain 1983', 23" x 27".	2109	A framed Limited Edition Print of Clifton College no. 91/124 signed lower right Barry Cotterell. Celebrating its 125th Anniversary, 24" x 18"
2092	A framed Oil on board depicting trees and tree trunks, 31" x 22 1/4".	2110	A large framed print of a French Chateau.
2093	An Oil on board depicting Mother and child, unframed, small watercolour of a country landscape and a print of a Cat by Wendy Stevenson, limited edition no. 464/500.	2111	Five Framed prints to include The Virgin Mary, Two of Caerleon, by J E Hennah and Two by T.S. Allan Bibury and Lower Slaughter



2112	A framed coloured Print of an engraving of Soldier on horseback, after Albrecht Durer, 16 1/2" x 20".	2130	A framed and mounted mixed media drawing titled verso "Crocus 2", signed lower right S. Derre Brown '96, 19" x 23".
2113	A small framed Watercolour, Entrance to a Hall, Indistinctly signed lower right.	2131	A framed print of a "Town with a Bridge" after Francesco Guardi, 16 1/2" x 10 1/4" and a "Guinard veronique" Catalogue of works.
2114	A quantity of Prints, to include Widdicombe Fair, Keats Lane Eton by F Robson, Monet Still Life and a quantity of old black and white photographs, etc.	2132	A framed and mounted Watercolour titled "SARI" signed lower right Peter Powis '98, 13 3/4" x 17 3/4".
2115	A quantity of pictures to include Persil Adverts, Frank Wright print of horses drinking from a river, Stephen Gayford "Snuggle", study of a Irish Wolfhound and a Wire haired Terrier, etc.	2133	A framed and mounted Oil on canvas depicting a young tree in full blossom. Signed lower right Effie, 14" x 18".
2116	A framed and mounted Watercolour titled "Off to Work" by Clement Lambert 1855 - 1925, along with a Ornate framed watercolour depicting a River and Mountain Scene.	2134	A framed and mounted Watercolour titled Canongar Edinburgh. signed lower right Ken Lockhead, 12 1/2" x 15 1/2".
2117	Two Tai Prints, on silk.	2135	A framed and mounted Pencil sketch portrait of a Semi-nude lady. signed lower left Peter Powis titled "Jane", 18" x 22"
2118	A screen Print with images of Dragon and lady.	2136	A framed and glazed Oil on board of a female nude, signed lower right Peter Powis titled "Dorothy", 19 3/4" x 23 1/2".
2119	A Limited Edition Print (no. 11/295) titled 'Tree Fellas' by Nigel Hemming, signed in pencil by the artist.	2137	A framed Oil on board depicting a female nude sitting, signed lower right Peter Powis titled "Penny", 15 1/4" x 19 1/4".
2120	A Limited Edition (no. 84/495) Labrador Print by Nigel Hemming, signed in pencil by the artist.	2138	A ornate framed oil on board portrait of a young lady titled "Gladys". Signed lower right Peter Powis 15 1/2" x 19 1/2".
2121	A framed and mounted Spaniel Print by Nigel Hemming.	2139	A wooden framed oil on board of a beach scene titled "Red Bucket" depicting a young girl building a sand castle with her red bucket. Signed lower right Peter Powis 18 3/4" x 15".
2122	A Limited Edition Print (no. 334/850) titled 'A Day Out' depicting gun dogs by Gillian Harris.	2140	A framed and mounted Etching depicting The Western Window, Tintern Abbey by A. Willmore, 11" x 14".
2123	A framed Oil on board depicting sailing boats, signed lower right M. Jones, 34 1/4" x 25 1/4".	2141	A framed and mounted coloured etching depicting Tintern Abbey in th Wye Valley 16 1/4" x 12 1/2".
2124	A framed and mounted Watercolour titled "Loch Fyne", signed lower left David D. Howard, 23 1/2" x 30 3/4".	2142	A framed and mounted water colour initialed S C lower right. Label verso titled "The Boathouse" by Susan Carpenter 18" x 14".
2125	A framed and mounted etching of Dartmouth. Signed lower right W. Hawsworth on Fine Art Trade Guild Paper by J.N.J., 11 3/4" x 14".	2143	A large framed and mounted water colour depicting a Harbour Scene. Signed in pencil John Harris? 27 1/2" x 21".
2126	A framed Oil on board of a young lady in a white dress and hat. No visible signature, 15 1/2" x 19 1/2".	2144	A large framed and mounted water colour depicting a Street Scene. Signed lower right Paul Weaver 19" x 25 3/4".
2127	A framed and mounted B. Sefton Print depicting a Venetian waterway. Signed lower left, 17 3/4" x 21 3/4".	2145	A large framed and mounted water colour. Signed lower left Brian C. Laucester 88 depicting a Canal Scene with buildings and a Tow path. 26 3/4" x 20 3/4".
2128	A framed print titled Baltimore Oriole, 14 1/2" x 17 1/2".	2146	A red portfolio containing Pencil, Charcoal and water colour Studies of female and male nudes.
2129	A framed and mounted Pastel drawing of a reclining nude titled "Alison" by Peter Powis, 23 1/2" x 18 1/2".		

2147	A black portfolio containing drawings of portraits and nude figures.	2162	Two Black famed and mounted Pastel drawings depicting an Ink bottle with Daffodils, Both signed Marion Willcocks 17" x 21".
2148	A framed 'Red Rum' Print signed lower right Neil Cawthorne and by trainer D. McCain.	2163	A quantity of Marion Willcocks Pastel paintings to include A Farm House with Chickens and a Cat in the garden, River landscapes, a Country landscape with figures, A shop in Pembrokeshire etc.
2149	Two Horsewell Oil paintings in gilt frames depicting country landscapes with water mills.	2164	A quantity of framed watercolours, to include A Village Scene with Pub, "Outhgill", "Pinker's Pond, "Meerkats", "Mevagissy" etc.
2150	A large Oil painting by Peter Snell depicting a river landscape surrounded by trees, 40 3/4" x 29".	2165	A framed and mounted Pastel picture of a Race Horse titled "Celtic Chief", signed lower right Marion Willcocks.
2151	A pair of Wooden framed Black and White Prints titled "Suspense" and "Betrothal". Initialed H.B.S.	2166	A quantity of unframed watercolours, to include, Seascapes, Huffkins Tea Rooms Burford, Mordiford Post Office, River landscapes, Cwmbran Farm, etc.
2152	A Quantity of Prints to include John Constable The Cornfield, The Haywain, Burrator Reservoir by David Young etc.	2167	A quantity of Oils on canvas , to include Country Landscapes, River Landscapes, etc.
2153	A framed Oil on canvas, initialled lower left KMJ, titled St. Peter Henllys and Rwyn Barklyn, Gwent.	2168	A quantity of Oils on board, Country and River Landscapes, to include River Exe, Seascapes, some signed by The Artist Marion Willcocks.
2154	A framed Print on canvas titled "The first Music Lesson" by Jules A Meunier, along with a framed Print of Maesllwch Castle, a G.A.J Harris print ** of a country Landscape and a Cries of London Print.	2169	A quantity of Artist's Watercolour and Sketch pads full of pencil/ink sketches.,
2155	Three framed and mounted Prints to include Ullswater, Broomhill point Derwentwater and Friars Grag, Derwentwater.	2170	A quantity of Artist's pads full of Watercolours to include Coastal, Landscapes, Austria, etc.
2156	A framed Oil on board titled "Dilwyn" signed lower right K.S. Purvin, 22 1/2" x 17 1/2".	2171	Four framed and mounted Pastel paintings to include, A Farmstead with Sheep and Rolling hills in the distance, Dent in The Yorkshire Dales, A Gentleman and dog walking The Dales and A Country Landscape with Crop bundles and Rolling Hills, all by The Artist Marion Willcocks.
2157	A pair of framed and mounted Pastel Paintings to include a "Winters Walk" depicting a figure with dog in a Country Landscape and a Bleak looking Landscape with Homestead and Bird sat on a dry stone wall. Both signed by the same artist Marion Willcocks 2"	2172	A pair of Oil on canvas depicting Country Landscape, one being a River Landscape, the other having A Deer and a Church, Both initialed DEG..
2158	A pair of framed and mounted Pastel Paintings "Old Stable, New Barn" and High and Dry". Both signed and dated Marion Willcocks 2000, 24" x 19 1/4".	2173	A wooden framed Abstract painting.
2159	A framed and mounted Pastel Painting titled Verso "Calm Waters - Oban", Signed lower right Marion Willcocks, 28" x 22 3/4".	2174	Two unframed Oils on canvas, one of a Chestnut pony in a field indistinctly signed and the other of Ducks flying over a moonlight pond signed Patrick (both a/f).
2160	A framed and mounted Pastel Painting, signed lower right Marion Willcocks, titled verso "Caernarfon Castle", 22 1/2" x 18 1/2".	2175	Two unframed Oils on canvas, one of still life signed E. Pegrum after Vandael, the other of a Interior scene with fireplace, no visible signature.
2161	Three wooden framed and mounted Marion Willcocks Pastel Paintings to include "Very Wet on the Wirral", a Country Landscape with buildings and rolling hills in the distance and "Shetland Ponies on Stairmore".	2176	A quantity of prints to include chocolate advertising, an etching of a Church, portrait of a Lady seated, etc.

- 2177 A quantity of Educational posters by the artist John Turner to include "The Little boy in the Temple", "The Boy in the coloured coat", etc.
- 2178 A 19th c. Watercolour, impressionist beach scene, G.S. French, 1892, unglazed.
- 2179 A Watercolour of country cottage with figures, signed R. Shepherd, lower right.
- 2180 An Oil painting of Monument of Wellington Arch, London signed E.A. Wyatt.
- 2181 A Watercolour of Impressionist landscape, signed C.E. Stiffe.
- 2182 A framed Oil on board of a windmill, a/f, no visible signature.
- 2183 A 1960's Oil of a still life signed L.R.S., (Lilian R. Snook).
- 2184 A framed and mounted Limited Edition Print (no. 210/250) of Berisford Dale Peak District by W.R. Makinson, with paper stamp to lower left and artists signature in pencil lower right.
- 2185 A pair of modern Prints on canvas of New York and the Twin Towers.
- 2186 A framed and mounted Print of Vulcan Tanker over Lincoln Cathedral, watermarked and signed by artist, Eric E. Day (1984), pilots, etc., 22 1/2" x 19 1/4".
- 2187 A framed and mounted Watercolour titled "Cock Pheasant Alarmed" initialled R.M.M. (Richard M. Mather), notes on the artist verso, 23 3/4" x 19".
- 2188 A 19th c. Oil painting of Dog smoking a pipe, unframed, no visible signature.
- 2189 An antique giltwood frame.
- 2190 Two large abstract gilt framed Prints including Auguste Macke - House in Garden.
- 2191 A large framed Print of hunting scene entitled "Sir Richard Sutton and the Quorn Hounds".
- 2192 Two prints on board including "Precious" by Armando Gentilini and Bluebell Walk.
- 2193 A quantity of prints including Bluebell Wood by Gordon Beningfield, David Shepherd print of an elephant, The Warwickshire hunt and a still life watercolour of flowers in a bowl.
- 2194 A framed and mounted Print 'The Victory 1st Rate', published by R. Dodd, along with a framed and mounted print 'HMS Bellona' by Geoff Hunt.
- 2195 Three framed Prints to include; Roma Colosseo, The Guardinas by Michael O'Toole and a Stan Rosenthal seascape. Plus an Oil on canvas of a seascape.
- 2196 A gilt Picture Frame, 33 1/2" x 28 1/2", aperture size 26 1/4" x 21". \*\*\*V.A.T. will be added to the hammer price of this lot.
- 2197 A large ornate gilt Picture Frame, 31" x 40 1/4" overall, aperture size 27" x 35 3/4". \*\*\*V.A.T. will be added to the hammer price of this lot.
- 2198 A picture Frame, 38" x 31" overall, aperture size 34 1/2" x 27 1/2", some losses. \*\*\*V.A.T. will be added to the hammer price of this lot.
- 2199 A large glazed picture Frame, 31 3/4" x 39" overall, aperture size 25 1/2" x 27 1/2". \*\*\*V.A.T. will be added to the hammer price of this lot.

## **BRASS, COPPER & PEWTER**

- 2211 A large brass Charger having allover engravings of animals and birds, a fire dog in the form of a horse, lidded pot and Epsns three tier cake stand.
- 2212 An antique brass blow torch, a copper coffee pot and burner, brass candlesticks with pushers, etc.
- 2213 A pair of brass Candlesticks, 11 3/4" tall.
- 2214 A Brass Trivet.
- 2215 A brass Corinthian column Brass Lamp, 20 1/2" tall and a small Victorian Brass oil lamp both to converted to electric and a brass double candle student's lamp, 18 1/2" tall.
- 2216 Three small Victorian brass candlesticks, diamond sided, pair of small Corinthian column table lamp bases and larger Corinthian column table lamp bases.
- 2217 A brass footman, 14" x 11 1/2" x 12" high.
- 2218 A Copper Kettle having acorn finial.
- 2219 A quantity of brass and plated ware including large key, candlesticks, bud vases, fish eaters, etc.
- 2220 A quantity of metals including; pewter tankards, plated coasters, small brass and coloured bowls, candle snuffer, etc.
- 2221 A quantity of brass including garden sprayer, bedwarmer, pair of candlesticks, etc. \*\*\*V.A.T. will be added to the hammer price of this lot.

## **SILVER, SILVER PLATE, ETC**

- 2231 A sterling silver American Art Nouveau Tiffany & Co. double Photograph frame, 10 1/4" wide x 7" high.

2232	A pair of George V Silver Candlesticks having column form on square bases with acanthus leaf decoration, London 1893, makers Henry Wilkinson & Co., 6" tall.	2247	A cased set of Silver Teaspoons with sugar tongs, London 1894 (tongs 1893), weight 93.3 g.
2233	An ornate Victorian silver Teapot with bird of prey finial on a hexagonal lobed body, Sheffield 1853, makers Robert & Hall, 803 g.	2248	A small quantity of metals including plated goblets, horn handled carving knife and fork etc.
2234	A George III silver Cream Jug/ewer on pedestal foot with elegant scroll handle, London 1776, maker Joseph Lock, 5 3/4" tall, 150 g..	2249	Four silver plated gallery trays.
2235	A Silver twin handled miniature pot/porringer, Birmingham 1904, 30 g, along with a miniature silver Toast rack standing on bun feet, Birmingham 1916, 59 g.	2250	A silver Christening mug, Birmingham 1913 inscribed 'Willie Dec 8th 1915'.
2236	A set of three Silver coffee spoons, Sheffield 1902, a teaspoon, London 1879 and an Epns serving spoon.	2251	A George II silver Christening tankard, London 1747 maker Thomas Whipam 'W. Davies D.D to his Grandson'.
2237	A set of Silver salad servers, Sheffield 1912, maker Thomas Bradbury & Sons Ltd., 190 g.	2252	A good quantity of plated cutlery including serving spoons, knives, forks, fish eaters, etc.
2238	A pair of small Silver salt & pepper Pots, Birmingham 1912, 50 g (some dents).	2253	A quantity of plated items including; tea and hot water pots, sifter spoon, cased fish eaters, brass charger, etc.
2239	A Victorian silver gilt spoon having Mother of pearl handle, possibly an anointing spoon, Sheffield 1883.	2254	A small box of silver plate cutlery including teaspoons, pair of candlesticks etc.
2240	A cased set of silver teaspoons, Sheffield 1897, maker John Round & Son Ltd. along with non-matching sugar tongs, Birmingham 1909, maker Joseph Gloster Ltd.	2255	A small weighted silver candlestick and a silver bowl, both stamped Birmingham.
2241	A boxed Mappin & Webb Silver Cruet set complete with liners and spoons, hallmarked for Bicentenary Birmingham 1973.	2256	A Silver bottle Holder, Sheffield 1928, maker Atkin Brothers, 3" tall, 142 g. **
2242	A pair of low Silver oval Candlesticks in classical style of fluted and bead decoration, 3 1/2" tall Birmingham 1904 maker William Aitken (repair to one).	2257	A Silver Teapot having wooden handle and finial, London 1923, maker Robert Pringle & Sons and a matching sugar Bowl, 182 g.
2243	A boxed Silver Cruet set of small size pepper, salt, mustard and matching spoon, Birmingham 1993, maker Reign Beau Ltd.	2258	A Silver coffee Pot with ebonised handle and finial, Chester 1905, maker Stokes & Ireland Ltd., 415 g including handle.
2244	A box of mixed plated cutlery including Audrey silver plated, together with a small circular Epns pill box.	2259	A Silver Salver standing on four hoof feet, London 1934, maker Edward Barnard & Sons Ltd., 12 1/2" diameter, 908 g.
2245	A wooden cutlery tray containing a quantity of bone handled knives, small silver Spoon stamped 1817 Josiah & George Piercy, three Sheffield Silver coffee spoons (a/f) and a floral blue and white enamel meat plate.	2260	A set of six Victorian Kings pattern Silver dinner Forks, London circa 1840's, maker William Eaton, 470 g total.
2246	An Epns four piece Teaset including teapot, hot water pot, sugar basin and milk jug, plus a ****Bowl, cream with floral decoration, back stamped, and a small inlaid Box.	2261	A set of eight Victorian Kings pattern Silver side forks, London circa 1840's, maker William Eaton, 367 g total. **
		2262	Two Victorian Kings pattern Silver serving Spoons, London circa 1840's, maker William Eaton, 150 g. total.
		2263	Three Victorian Kings pattern Silver coffee Spoons and one teaspoon, London circa 1840's, maker William Eaton, 90 g total.
		2264	A small quantity of Epns and silver including silver sugar tongs, silver napkin ring, fox head stirrup cup, Epns sauce holder, etc.
		2265	A set of five Silver teaspoons, Kings pattern, Edinburgh 1843, maker James & Walter Marshall, 128 g total.
		2266	A set of six Silver soup Spoons in ribbon and reed pattern, Sheffield 1928, maker Atkin Brothers, 460 g total.

2267	A quantity of Alexd. Clark Sheffield knives and a quantity of Walker & Hall knives.	2292	An EPNS nurses buckle.
2268	A quantity of plated cutlery, candelabra, etc. plus a brass candelabra.	2293	Three costume brooches including; Sterling silver with faceted stone fob and two with white stone setting (one marked Sphinx).
2269	A plated candelabra and large plated galleried tray.	2294	A Swiss silver cased Pocket Watch having inset seconds dial, with key.
2270	A Viners Epns tray with condiment set, boxed set of 6 Epns teaspoons and four plated napkin holders.	2295	A Swiss made 925 silver cased Imperial Lever Pocket Watch by John Purser & Sons 'Watchmakers to the Admiralty' on a leather strap with key.
2271	A red velvet covered Canteen of Cutlery for six place setting.	2296	A silver 3d set in an unmarked ring.
2272	A large quantity of Epns cutlery including; A.E. Thompson & Son part canteen, A. Beard Shaw & Co part canteen, pastry forks, Dixon Chippendale soup spoons, Thomas Ward & Sons butter knives, etc.	2299	A Victorian yellow metal three stone citrine brooch.
2273	Two three piece plated Teasets; one Civic, the other Walker & Hall.	2300	A collection of Georgian and other buckles; paste, cut steel, etc.
2274	A quantity of miscellaneous cutlery to include 'Bennett & Heron, EPNS, A1' servers, EPNS dessert spoons, sugar tongs etc., eight bone handled fish knives and twelve fish forks plus various bone handled knives, forks, a bread knife and a three piece 'Prestige' carving set etc.	2301	A group of Art Deco items including; a Molinard Concreta hand-painted Bakelite perfume pot (still containing perfume), a buckle, dress clips (935, 925), etc.
2275	A quantity of EPNS to include teapot by James Dixon, heavy oval entree dish, handle detachable by Walker & Hall, various size sweet dishes and a pair of candlesticks.	2302	A quantity of buckles (some marked Czechoslovakia), etc.
2276	A one hundred piece Viners canteen for eight (as new). ***	2303	A boxed gents Fossil wristwatch and a Skems wristwatch with leather strap.
2277	A three piece Silver Teaset including teapot, sucrier and milk jug, London 1900/01, maker Walker & Hall. ***	2304	A red leather Purse containing two enamel dachshund tags.
2278	A Silver cream jug, Sheffield 1901/02.	2305	A heavy gent's yellow finished Ring.
2279	A pair of heavy silver plated sauce/gravy Boats by Elkington.	2306	Assorted watches including Rotary, Accurist, Aviator pocket watch and Silver cased pocket Watch, Kendale London.
2280	An attractive four piece Epns Teaset with lobed bodies comprising Teapot, hot water Jug, sugar bowl and cream jug.	2307	A Yves Camani gold coloured "Bling" watch, in tin.
2281	A pair of Silver Candlesticks with weighted bases, Birmingham 1904, makers I.S. Greenberg & Co., a/f, 4 3/4" tall.	2308	A gents Seiko "S" automatic Watch, showing day and time, with original bracelet (running at time of lotting).
2282	A bone handled Silver Stilton scoop with pusher, Birmingham 1869, (split to handle).	2309	A small quantity of costume jewellery and watches.
2283	Six Silver Birmingham teaspoons JS & J hallmark, together with a small berry spoon, a Opoda Silver mustard spoon, an antique fiddle spoon and 4 sterling Silver teaspoons pat 1932.	2311	A small quantity of costume jewellery on a papier mache and Mother of Pearl tray including; bangles, watch, etc. plus four plated place settings in the form of ducks.
		2312	A small quantity of costume jewellery, plus a boxed cake slice, plated spoon, etc.
		2313	A vintage Ingersoll silver tone pocket watch.
		2314	A 9ct gold garnet and opal ring, size T, approx 4g.
		2315	A Rotary 'Veneto' ladies watch, boxed.
		2316	A silver cameo Brooch, plus five vintage brooches including; Scottie dog, silver Mizpah, etc.
		2317	Three brooches to include; Sterling silver Scottish dirk brooch, gold coloured brooch having purple flowers, etc. Plus a Sterling silver ring, etc.

## **JEWELLERY**

2291	A silver charm Bracelet having heart padlock fastening plus six charms.
------	---

2318	A quantity of boxed Heritage Highland Clothing costume jewellery, unmarked charm bracelet, etc.	2336	A large quantity of costume jewellery necklaces including multi-strand, chunky beads, etc., some with 925 clasps.
2319	An 18ct. white gold Chain and 18 ct. Pendant with diamonds, stamped "750 LW".	2337	A black jewellery box containing various bracelets including, metal, leather, charm bracelets, some stamped 925.
2320	A Silver Bracelet, marked 925, with T-bar fastening and Stratton Powder Compact with mother of pearl lid.	2338	A quantity of semi-precious stone necklaces, some with 925 silver clasps plus a pack of "coloured rocks- moth scale" cards in a Lloyd Baker box.
2321	A box of watches including; gents Seiko, Citron, spare straps, etc.	2339	A small quantity of 925 dress Rings, all with blue centres, some being semi-precious, some being Suarti.
2322	A pair of enamelled pin badges for Nantwich & District Motor Club, plus a pair of hand-made costume cufflinks.	2340	A small quantity of dress Rings, mostly stamped 925, some being Suarti, one having tiger eye centre.
2323	A box containing a wide variety of brooches to include "Movietex", 925 sterling silver, marcasite, three flamingos, etc. plus two necklaces.	2341	A small quantity of dress Rings, including 925 silver band, some with clear stone centres, etc.
2324	An Aston Gerald stainless steel His & Hers two piece watch set in presentation box, as new.	2342	A Nigel Hunt "Amber plus" sterling Silver and amber Jewellery set consisting of necklace, ring and bracelet.
2325	Two cased Montreux Swiss movement gent's watches with as new black leather strap, one with black onyx dial, other lapis Lazuli, both with coat of arms.	2343	A stylish Sterling Silver multi-strand Necklace and bracelet set.
2326	A cased Royal Bali Collection EON 1962 ladies sterling silver filigree design wristwatch, as new.	2344	A pretty 925 Sterling Silver and amber lozenge shape Earrings and Necklace set.
2327	A cased Gossip ladies watch set with two watches and nine interchangeable bands, as new.	2345	A 9ct Gold Bangle with five dark blue oval sapphires flanked by chip diamonds, with COA (certificate of authenticity).
2328	A boxed and cased gent's Meridian 1770 stainless steel wristwatch, with one year warranty and instruction manual, as new.	2346	A 9ct Gold Celtic Bangle with central peridot stone with diamond chip knots either side, with C.O.A.
2329	A ladies Radley boxed 'Watch it ladies' wristwatch with black dial and silicone strap, as new.	2347	A 9ct Gold oval peridot and diamond Celtic Pendant on a 18" Prince of Wales chain, with C.O.A.
2330	A quantity of stainless steel wristwatches including boxed 'Diamond & Co.' quartz wristwatch, Christian Lars, Poljot 18 jewels etc.	2348	A Silver Bangle, Birmingham 1962, maker CPS Jewellery Co. Ltd.
2331	A small quantity of Strada wristwatches including one with interchangeable bands, etc.	2349	A small quantity of Bangles.
2332	A small quantity of wristwatches including 'Gossip', 'Genoa' etc.	2350	A 9ct Gold Ring set with two rows of small oval Opals.
2333	A quantity of mostly ladies wristwatches including Renato, Butler & Wilson, two 'Princess Diana coin' dial watches etc.	2351	A 9ct. gold and jade Oriental jewellery set comprising necklace, pair of earrings and ring.
2334	A small quantity of wristwatches including Amadeus, 'Beverley Hills Polo Club' Giorgio Armani 'Whatever it takes' etc.	2352	A 14k yellow gold and jade Bracelet, a 9K gold and jade Bracelet and a 9K yellow gold and jade pendant.
2335	A jewellery box with two drawers containing costume brooches including marcasite, bar brooches, giraffe brooch, etc.	2353	A small quantity of Jade and Sterling Silver jewellery including earrings, necklaces, bangles, etc. in oriental jewellery box.
		2354	A quantity of semi-precious stone Bracelets and Bangles including two by Ketty Dalsgaard, Denmark, in white jewellery box.
		2355	A wooden jewellery Box with two drawers containing white metal costume jewellery necklaces.

2356	A quantity of "Nature" related Jewellery including pairs of rose earrings with 925 backs, Ginkgo leaf pendant, leaf earrings, etc.	2373	A large quantity of costume jewellery including bangles, necklaces, earrings.and Silver necklaces,St Justin torque etc.
2357	A quantity of simulated pearl and fresh pearl necklaces, some with 925 clasps, shell necklace, 925 and mother of pearl bracelets, earrings, etc. in a small jewellery box.	2374	An antique WWI 18ct gold platinum and diamond navy Sweetheart Brooch. 4g
2358	Two 9ct Gold Chains.	2375	A 9 K gold chain with yellow metal Opal pendant.
2359	A large jewellery Box, with key, containing costume jewellery including rings, earrings, leather braided bracelets, one gold cufflink, etc.	2376	A 9 ct Gold necklace with cream and pink drop pearls and two 9k Gold post and back faux earrings.
2360	A quantity of mostly Sterling Silver chains with pendants including boxed Russell Grant & London Mint Taurus pendant, tree of life, etc. plus a semi-precious pendant on cord with interchangeable stones.		
2361	A quantity of 925 thick rope Necklaces and Chains in Bohemian style, one having rose quartz crucifix pendant.		
2362	A quantity of 925 necklaces and bracelets including Silver Identity bracelet (Birmingham), Crucifix on chain, Italian chains stamped 925, St. Christopher pendants, etc.		
2363	A small quantity of Sterling Silver earrings and necklace sets, one with turquoise stones, plus a boxed Celtic style brooch and matching earrings.		
2364	A 585 (14 ct) Gold Ring with jade purple cabochon stone, 9ct. yellow gold chain with Asian purple jade pendant and a 9ct. yellow gold chain with Asian black onyx pendant.		
2365	A quantity of very fine 925 Sterling Silver chains, some marked Italy.		
2366	A quantity of pendants and charms, mostly 925 Sterling Silver including silver locket, turtle charm, etc.		
2367	A quantity of 925 dropper Earrings including marcasite, floral, etc. and a pair with 9ct backs.		
2368	A quantity of 925 Suarti Bohemian style jewellery including necklaces, pendant, earrings, etc.		
2369	A small quantity of hoop Earrings, mostly 925 in small blue hexagonal box.		
2370	A quantity of large and colourful Earrings including wood effect, Tiger eye, semi-precious, etc. mostly with 925 backs.		
2371	A quantity of mostly 925 stud Earrings including hearts, dalmation Jasper, etc.		
2372	A box of ladies watches, jewellery, etc. some a/f.		







Forthcoming Auctions of Antique & Country  
Furniture, Objets D'art & Collectables

at the New Salerooms situated in Pontrilas.  
(Just off the Abergavenny/Hereford Road)

**2024**

May	3 <sup>rd</sup> - 4 <sup>th</sup>	August	16 <sup>th</sup> - 17 <sup>th</sup>
May	24 <sup>th</sup> - 25 <sup>th</sup>	September	13 <sup>th</sup> - 14 <sup>th</sup>
June	14 <sup>th</sup> - 15 <sup>th</sup>	October	4 <sup>th</sup> - 5 <sup>th</sup>
July	5 <sup>th</sup> - 6 <sup>th</sup>	October	25 <sup>th</sup> - 26 <sup>th</sup>
July	26 <sup>th</sup> - 27 <sup>th</sup>	November	15 <sup>th</sup> - 16 <sup>th</sup>
		December	6 <sup>th</sup> - 7 <sup>th</sup>



June 22<sup>nd</sup>  
Pandy Vintage Auction

Please note: Dates may alter without prior notice,  
please check nearer the relevant date.

Viewing: Thursday prior to the sale dates  
9am – 1pm and 2pm – 7pm  
and Morning of sale from 8.00am  
Check website for details

Entry Forms, Catalogues and Live Online Bidding  
available from our website:

**[www.nigel-ward.co.uk](http://www.nigel-ward.co.uk)**

The New Salerooms  
Pontrilas - Hereford - HR2 0EH

 **01981 240140** 

email: [salerooms@nigel-ward.co.uk](mailto:salerooms@nigel-ward.co.uk)

# CONDITIONS OF SALE

1. Whilst Nigel Ward & Co. make every effort to ensure the accuracy of their catalogue and description of any lot:
  - a. Each lot as set out in the catalogue or as divided or combined with any other lot or lots is sold by the Vendors with all faults, imperfections and errors of description.
  - b. The Auctioneers do not accept responsibility for the authenticity, attribution, genuineness, origin, authorship, date, age, period condition or quality of any lot.
  - c. All statements, whether printed in the catalogue or made orally, as to any of the matters set out in "b" above are statements of opinion only and are not to be taken as being implying any warranties or representations of fact by Nigel Ward & Co.
  - d. All conditions, notices, descriptions, statements and other matters in the catalogue and elsewhere concerning any lot are subject to any statements modifying or affecting the same made by the Auctioneer from the rostrum prior to any bid being accepted for the lot.
2. The Auctioneer has absolute discretion to divide any lot, to combine any two or more lots or to withdraw any lot or lots from the sale, to refuse, bids, regulate bidding, to cancel the sale without in any case giving any reason and without previous notice.
3. The Auctioneer has the right to bid on behalf of the Vendors for all goods which are offered subject to reserve or at the Auctioneer's discretion.
4. Unless instructions are received previously as to reserve, the Auctioneers may sell the items without reserve if they think fit.
5. The highest bidder shall be the buyer except in the case of a dispute. If during the auction the Auctioneer considers that a dispute has arisen, he has absolute discretion to settle it or to re-offer the lot.
6. The Auctioneer shall regulate the bidding at his own discretion.
7. Each buyer by making a bid for a lot acknowledges that he has satisfied himself fully before bidding by inspection or otherwise as to all the Sale Conditions, the physical condition of and description of the lot including but not restricted to whether the lot is damaged or has been repaired or restored.
8. Each lot shall remain at the Vendor's risk until sold. From the fall of the hammer the lot shall remain at the Purchaser's risk but in no circumstances must they be removed from the sale until paid for. **CHEQUES WILL ONLY BE ACCEPTED FROM PERSONS PREVIOUSLY KNOWN TO THE AUCTIONEER OR OTHERWISE SUPPORTED BY A BANKER'S CARD OR REFERENCE.** If payment is made by cheque, the Auctioneers shall have a lien upon the goods, until such a cheque has been cleared by the Bank upon which it is drawn.
9. Legal title will not pass to the purchaser until the lot (s) has been paid for in full and the Auctioneer shall be entitled to a lien on any lot sold until the purchase price is paid in full. Immediately the lot is sold the purchaser shall notify the Auctioneers of his name and address and if called upon to do so by the Auctioneer shall pay such proportion of the purchase price as the Auctioneer may require, in default of which the lot or lots so purchased to be immediately re-offered.
10. Lots shall be paid for in full and taken away from the sale at the buyer's risk and expense immediately on the conclusion of the sale, failing which the Auctioneer shall not be responsible if the same are lost, stolen, damaged or destroyed and any lots not taken away shall be at the sole risk of the buyer and subject to a charge for storage.
11. **Buyer's Premium at the rate of 20% Plus V.A.T. will be added to the hammer price of all lots purchased.**

## Online Bidding

*Nigel Ward & Company offer an online bidding service via [nigelward.atgportals.net](http://nigelward.atgportals.net) and [the-saleroom.com](http://the-saleroom.com) for bidders who cannot attend the sale.*

*In completing the bidder registration on [nigelward.atgportals.net](http://nigelward.atgportals.net) or [the-saleroom.com](http://the-saleroom.com) and providing your credit card details and unless alternative arrangements are agreed with Nigel Ward & Company, you:*

- *authorise Nigel Ward & Company, if they so wish, to charge the credit card given in part or full payment, including all fees, for items successfully purchased in the auction via [the-saleroom.com](http://the-saleroom.com), and*
- *confirm that you are authorised to provide these credit card details to Nigel Ward & Company through [www.the-saleroom.com](http://www.the-saleroom.com) and agree that Nigel Ward & Company are entitled to ship the goods to the card holder name and card holder address provided in fulfilment of the sale.*

***Please note that any lots purchased via [nigelward.atgportals.net](http://nigelward.atgportals.net) live auction service will be subject to an additional 3% commission charge + VAT at the rate imposed on the hammer price and any lots purchased via [the-saleroom.com](http://the-saleroom.com) live auction service will be subject to an additional 5% commission charge + VAT at the rate imposed on the hammer price.***