



The New Salerooms, Pontrilas, Hereford. HR2 0EH Tel. 01981 240140 ~ Fax. 01981 240340.
Email. salerooms@nigel-ward.co.uk

CATALOGUE

of the

Special Early January Two-Day Sale of

**ANTIQUE AND COUNTRY
FURNITURE, EFFECTS, PORCELAIN,
PAINTINGS, OBJETS D'ART
AND COLLECTABLES**

For Sale by Auction

on

**FRIDAY 9th JANUARY and
SATURDAY 10th JANUARY, 2026**

**Viewing is on Thursday 8th January
from 9am - 1pm and from 2pm - 7pm.
(Light refreshments available)**

Please note: Two auctioneers will be in operation for much of the Saturday sale.

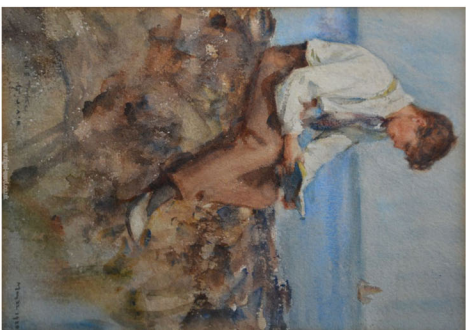
Buyer's Premium = 20% Plus VAT (24% Incl. VAT)
Vehicles 10% Plus VAT (12% incl. VAT)

Online Bidders will pay an additional fee.

Terms: Most Major Debit or Credit Cards/Cash/Bankers Draft/Electronic Bank Transfer.

BID LIVE ONLINE: www.nigel-ward.co.uk/live

Catalogue **£2** or download from:
www.nigel-ward.co.uk



Nigel Ward & Co. Catalogue 9th – 10th January 2026

Friday 9th January 9am **BRIC-A-BRAC (OUTSIDE LOTS)**

1	An aluminium patio table and two chairs.	31	An aluminium folding ladder with platform.
2	An ancient Olive tree.	32	A wheelbarrow (as found).
3	A cast iron trough, 31" x 16 1/2" x 12".	33	A wooden toboggan by Glow, 43 1/2" long.
4	A Bay tree in a terracotta frost resistant pot, approximately 5' 8" high.	34	A Ford roof rack (max weight 75 kgs) 42" x 32" rack size.
5	A Bay tree in a terracotta frost resistant pot, approximately 5' 8" high.	35	An adjustable dog guard for a vehicle.
6	A Bay tree in a terracotta frost resistant pot, approx 5' 11" high.	36	A pair of wheel grips for snow.
7	A Bay tree in a terracotta frost resistant pot, approx 5' 3" high.	37	A clothes rail, 4' long.
8	A Bay tree in a terracotta frost resistant pot, approx 6' high.	38	A 'Hozelock' hose on reel, plus another length of hose and a new wheelbarrow.
9	A boat propeller.	39	A cast iron 'Cow' door bell and a wall bracket for a light, metal garden art.
10	An outdoor Wall Lantern with brackets, approx 26" high (with electric fittings).	40	A block and tackle (unused), a metre of link chain and three sets of rope, etc.
11	A pair of painted cast iron columns, 13 1/2" high.	41	A fold up picnic bench/table.
12	A cast iron and copper decorative fire surround, 4' x 12 1/2" x 8".	42	A bag of gardening items to include: watering roses, planter and a sprayer, etc.
13	A vintage cast iron wheel, 2' diameter.	43	A petrol can, brass knobs, bulldog clips, etc.
14	A standard Olive tree, 3' 6" high.	44	Two rodent cages, one being 2' 8" long and the other 23 1/2" long.
15	A cast iron column finished in white, 42 1/2" high. Cast into one side with "D. Evans, Llandaff, 1889".	45	A boat anchor, 33" long.
16	A pick axe, spade, pry bar and pole saw.	46	Hanging baskets with wall brackets and a garden seat.
17	A vintage children's Penny Farthing, approximately 3' 4" high (for restoration).	47	A set of drain/chimney rods.
18	Three vintage items - a spade, a long ladle and a sack truck.	48	A post rammer.
19	Five vintage log splitting axes.	49	A wooden barrel style bucket, an owl toasting fork and a stainless steel coal bucket.
20	A wooden stepladder, two narrow wooden ladder steps with top hooks (possibly library steps) 4' 8" long and a vintage sack truck.	50	A gas camping stove and a Coleman lantern.
21	An extending ladder with a standoff.	51	A vintage cattle de-horner, 4' long.
22	A garden spade, fork and hoe.	52	A 'Hickory' handled Axe and two log splitting wedges together with a brass fire surround/guard, 4' 2".
23	Two large vintage scythes.	53	A quantity of hand tools to include: axes, bench vice, etc.
24	A quantity of garden tools to include: spades, a hoe, rakes, fork, cultivator, etc.	54	A can of Danish oil, wall brackets, door handles, antifreeze, etc.
25	A Richmond four way work bench and vice.	55	A quantity of copper cable.
26	A white ladies Raleigh bicycle with pump and Sturmey Archer 3 gears.	56	Stoneware flagons, terracotta pots and a can.
27	Three garden poly tunnels (one without corrugated plastic) 4' long	57	A pair of Axle stands.
28	A large quantity of Buoys, one large buoy and two bags.	58	A box of Stilsons and vice, etc.
29	Two directors chairs, a teak folding table, a sun lounger and two chairs.	59	A Britool ratchet pipe threader kit.
30	An Indirect foam insulated copper cylinder, approximately 3' 5" high.	60	Two bird cages and contents.
		61	A pair of Axle stands.
		62	A 'Lake & Elliot Ltd.' 6 ton bottle jack.
		63	A quantity of camping items to include:, a two person framed tent, air pump, folding stools, water butt, etc.
		64	A 'Draper' tile cutter and bucket of tiling equipment.
		65	A 'Knott' trailer coupling.
		66	A quantity of pick-up hitches, trailer couplings, etc. (including Land Rover).

67	A cast iron Christmas tree stand, base 12" diameter.	97	A milk bottle stand, plus 'Milk Today' sign, etc. and a mini wheelbarrow, 32" long.
68	Two wind breaks for the beach.	98	A rustic three legged wooden stool, 17" diameter x 21" high (possibly used as a chopping block).
69	A walking aid.		
70	A galvanised tank, 23" x 12" x 15" and metal off cuts.	99	A vintage galvanised water bowser, 32" wide x 3' high x 5' long.
71	A wrought iron sixteen bottle wine rack, 3' 6".	100	Four tyres, one with Rover hub cap, tyre 185-60R13, etc.
72	A quantity of bamboo drain rods.	101	A metal framed patio table with glass top, 55" x 35 1/2" x 28 1/2" high plus five chairs and a parasol.
73	A Ryobi petrol lawn mower with grass collector and having a 140 cc. overhead valve engine. (Engine turned and had good compression at the time of lotting).	102	A cast iron manhole cover, 26 1/4" x 20 1/4" with frame.
74	A pet carrier, etc. 20" x 16 1/2" high.	103	A large slatted Garden Bench on wrought iron frame painted in grey, 8' 3" long x 3' x 3'.
75	A mobility scooter/shop rider (no charger present, condition unknown) ***and an LifeSling overboard rescue system.	104	A quantity of flexi pipe.
76	A quantity of stained glass and leaded window panels.	105	A large animal feeder/hopper, 50" x 26" x 50" high.
77	A crate of tree guards.	106	Two plastic hoppers/feeders.
78	A pond liner and a quantity of garden hose.	107	A large quantity of flue pipe, 5 3/4" diameter.
79	Two cast iron rain hoppers, approx 20" x 16" x 8".	108	A vintage petrol can with brass cap and vintage oil drum.
80	Three Met Posts.	109	Four garden chairs, etc.
81	Four galvanised buckets.	110	A large whetstone, 17" diameter x 3" deep.
82	A set of vintage scales with weights.	111	A large wheelbarrow on pneumatic tyre (tyre flat) 4' 7" x 29" x 30" high.
83	A quantity of new wiper blades, two camping chairs, bow saws, shears, etc.	112	A quantity of metal items to include: galvanised bath, 30" x 12" , scales and weights, boot scraper, coal buckets, etc all in a vintage wine box.
84	A Honda 2 kva generator having a side-valve petrol engine and long-run tank, recoil starter detached but present, engine turned and had compression during lotting. (Quite an early generator well worthy of restoration).	113	A pig bench, 6' 10" long x 10" x 18" high.
85	Two reels of garden hose.	114	An old pine sideboard (as found), 4' x 22" x 38" high.
86	A cast iron fire back, 26" square and fire grate on brass dogs, plus a spark guard and companion set.	115	A galvanised water tank, 38" x 27" x 28" approx.
87	A pair of antique cast iron Urn Planters, 17" diameter x 20" high.	116	A wooden double extending ladder.
88	A wrought iron plant stand with terracotta pot, 34" total height.	117	A chicken house with corrugated waterproof roof, laying box, window and door, 4' 2" wide x 6' 3" high x 6' 6" wide.
89	A millstone, 26 1/2" diameter x 5" deep.	118	An old enamel sign (as found).
90	A large cast iron three tier Fountain, having three swans to base and finished in white, approx 45" diameter x 8' high.	119	An old pine sideboard (as found), 5' 8" x 21" x 33" high.
91	A cast iron water Pump finished in white, approx 5' high.	120	A large slatted Garden Bench on wrought iron frame painted in grey, 6' long x 35" high x 35" deep.
92	A 19th century Garden Roller with wrought iron frame, finished in white, approx. 26" x 5".	121	A galvanised trough, 5' long.
93	Two concrete garden ornaments, a lady 26" high and a dog 17" long.	122	A large slatted Garden Bench with wrought iron frame painted grey, 6' long x 35" x 35".
94	A cast iron pig feeder (as found), 44" long.	123	A cast iron Coalbrookdale bench frame and end, finished in red with nasturtium pattern (as found).
95	A cast iron Christmas tree stand, approximately 14" diameter.	124	A pair of slatted Garden Chairs on wrought iron frame painted in grey, 2' wide x 35" x 25" deep.
96	A pair of wrought iron pot stands (one as found), 2' 3".	125	A patio table and chairs, plus another table.

126	A fire pit, approx 28" diameter.	163	A Packing crate, 40" x 22" x 31", made from reclaimed boxes including; "Shell Oil", "The Shell Company of South Africa Ltd, Maltese Cross, Oil Engine Kerosene", "The Shell Co, of South Africa, Shell 8 imp. galls Motor Spirit, highly inflammable", etc. and stencilled to the lid is R.A. Comyn Esq, Passenger PER. S.S. Arundel Castle, Cape Town.
127	A large slatted Garden Bench on wrought iron frame, approximately 8'3" long x 3' x 3'.	164	A metal lined wooden cargo box (39" x 24" x 13") including contents of duffel bags, Hessian sacks, etc.
128	A quantity of red roof tiles, 16 1/2" x 13".	165	Five fence panels, 6ft x 6ft.
129	A box of mixed softwood off cuts.	166	Five fence panels 5ft x 6ft.
130	A bag of soft wood off cuts.	167	A bag of softwood offcuts.
131	A bag of mixed softwood off cuts.	168	A bag of hardwood offcuts.
132	A Mk 7 Transit high-top Side door and window (from a mini bus).	169	A bag of hardwood offcuts.
133	A quantity of softwood off cuts in various lengths.	170	Eight bags of softwood offcuts.
134	A bedstead, 6' wide.	171	Six bags of kindling
135	Four white painted metal railings, various sizes.	172	Two bags of sawdust.
136	A quantity of terracotta roof tiles in various sizes.	173	100 fencing rails, 3" x 36".
137	A quantity of Redland Roman roof tiles.	174	100 fencing rails, 3" x 36".
138	Three pieces of walkway grating (two pieces 9' 10" x 33" and one piece 5' 7" x 33").	175	100 fencing rails 3" x 36".
139	A galvanised grating step for a vehicle, 4' 8" x 15".	176	A length of oak 7" square x 46".
140	Heavy wrought iron garden fencing, comprising one L-shaped section 4' x 10' long x 30" high, plus two other smaller sections.	177	Two lengths of oak 6" square x 44" and 46" lengths.
141	A large cast iron Lamp Post, 9' high.	178	Eight lengths of oak 4" x 3" x 38".
142	Three wooden interior doors and one pine mirrored wall shelf. 4' x 17".	179	Three lengths of oak 6" x 2" x 35".
143	A pair of wrought iron drive Gates, each 4' 7" x 3' 10" high,	180	One length of oak 7" square x 56".
144	A set of wrought iron Drive Gates finished in white, 5' x 5' 3" wide.	181	One length of oak 6" x 4" x 64".
145	Four children's chairs.	182	One length of oak 6" x 8" x 51".
146	A saw bench, 24" x 17" x 33".	183	One length of oak 7" square x 31".
147	A wooden cargo box, 35" x 22 1/2" x 17 1/2".	184	Two lengths of oak : 1 @ 7" x 4" x 36 1/2" and 1 @ 6" x 4" x 33 1/2".
148	Three concrete pillars (a/f).	185	One length of oak 7 3/4" x 3" x 61".
149	A sectional concrete Japanese pagoda lantern (crack to base), approximately 5ft tall.	186	One length of oak 7" square x 45".
150	A vintage Raleigh bicycle.	187	Two lengths of oak : 1 @ 4 1/2" x 3" x 52" and 1 @ 6" x 3" x 56".
151	Three planters; one circular concrete with lion mask detail, etc.	188	One length of oak 10 3/4" x 7" x 40 1/2".
152	A concrete figure of a female nude, 33" tall.	189	One length of oak 6" x 7" x 41 1/2".
153	A concrete bird bath, 16" diameter x 22" high.	190	One length of oak 7 1/2" x 7" x 45".
154	A galvanised garden incinerator.	191	To lengths of oak 9" x 3" x 35 1/2" and 42 1/2".
155	A concrete pot (a/f) with plastic obelisk.	192	One length of oak 8' x 4" x 92".
156	Two glazed planters; one blue potted with Ivy, etc and the other red potted with Pine bush.	193	One length of oak 7 1/2" x 6" x 73 1/2".
157	A teak garden chair with cast iron ends and back rest, 25" x 20" x 30".	194	Three lengths of oak : 2 @ 3" square x 57" and 1 @ 4" x 3" x 94".
158	A double extending ladder.	195	One length of oak 6" square x 62".
159	A teak garden bench, 44 1/2" x 22" x 35 1/2".	196	20 various lengths of oak including 2" x 1", 3" x 1" and 4" x 1" average length 84".
160	A pair of 'Goodyear' M & S (Mud & Snow) tyres - 215/60R17 (good tread).	197	One length of oak 9 1/2" x 6" x 45".
161	A wooden cargo box 'F.P Baker & Co Ltd London', 40" x 20" x 20".	198	Two lengths of oak : 1 @ 13" x 2" x 91" and 1 @ 16" x 2" x 118".
162	A crate of Beeswax.	199	30 posts, various lengths of 3" x 3" and 4" x 3".
		200	Nine lengths of tanalised timber 6" x 1" in lengths of 6 @ 94", 2 @ 71" and 1 @ 58".
		201	Ten lengths of Cedar 6" x 1" x 94".

202	Six lengths of Cedar 6" x 1 1/4" x 94"	251	6 tanalised newel posts.
203	Ten lengths of Cedar 6" x 1" x 94".	252	5 tanalised newel posts.
204	Ten lengths of Cedar 6" x 1" x 94".	253	5 tanalised newel posts.
205	Ten lengths of Cedar 6" x 1" x 94".	254	100 lengths of feather edge board, 65" long.
206	Ten lengths of Cedar 6" x 1" x 94".	255	5 tanalised newel posts.
207	Four lengths of Cedar 9" x 3/4" x 94".	256	100 lengths of feather edge board, 65" long.
208	Six lengths of Cedar 8" x 1 1/2" x 108".	257	32 lengths of softwood, 4" x 1 1/2" of various lengths.
209	Ten lengths of tanalised timber 8" x 1" x 94".	258	100 lengths of feather edge board, 65" long.
210	Ten lengths of Cedar 6" x 1" x 94".	259	100 lengths of feather edge board, 65" long.
211	Seven lengths of Cedar 8" x 1" x 94".	260	30 lengths of feather edge board, 65" long.
212	Eight lengths of Cedar 8" x 1" x 94".	261	One length of Cedar 6" x 3" x 189".
213	72 fence rails, 3" x 36".	262	Ten lengths of Cedar 6" x 1" x 189".
214	72 fence rails 3" x 35".	263	Ten lengths of Cedar 6" x 1" x 189".
215	Ten lengths of Cedar 6" x 1" x 189".	264	Ten lengths of Cedar 6" x 1" x 188".
216	Ten lengths of Cedar 6" x 1" x 189".	265	Ten lengths of Cedar 6" x 1" x 189".
217	Ten lengths of Cedar 6" x 1" x 189".	266	Ten lengths of Cedar 6" x 1" x 141".
218	Ten lengths of Cedar 6" x 1" x 189".	267	Ten lengths of Cedar 6" x 1" x 141".
219	Five lengths of Cedar 6" x 3" x 189".	268	Nine lengths of Cedar 6" x 1" x 141".
220	Five lengths of Cedar 6" x 3" x 189".	269	Three lengths of Cedar 8" x 2" x 109".
221	Five lengths of Cedar 6" x 2 1/2" x 189".	270	Twelve lengths of loglap 94" up to 160" long.
222	Four lengths of Cedar 6" x 2 1/2" x 189".	271	11 battens 2" x 3/4" x 94" average length.
223	Three lengths of Cedar 8" x 3" x 189".	272	2 lengths of cedar, 1 @ 5" x 4" and 1 @ 6" x 4" both 189" long.
224	Five lengths of Cedar 6" x 3" x 189".	273	12 lengths of tanalised 6" x 3/4" x 94" long.
225	Six lengths of Cedar 8" x 1/2" x 141".	274	4 lengths of cedar, 8" x 1 1/2" x 118".
226	Ten lengths of Cedar 6" x 1" x 141".	275	10 lengths tanalised, 6" x 1" x 94".
227	Ten lengths of Cedar 6" x 1" x 189".	276	10 lengths of tanalised, 6" x 3/4" x 94".
228	Eight lengths of Cedar 6" x 1" x 141".	277	10 lengths of tanalised 6" x 3/4" x 94".
229	Ten lengths of Cedar 6" x 1" x 141".	278	9 lengths of tanalised, 6" x 1" x 94".
230	Six lengths of Cedar 6" x 3" x 141".	279	9 lengths of 6" x 1" x 94".
231	8 lengths of cedar, 6" x 1" x 141".	280	8 lengths of tongue and groove, 6" x 165" long.
232	8 lengths of cedar, 6" x 1" x 141".	280 A	8 lengths of tongue and groove, 6" x various lengths.
233	Approximately 80 softwood battens.	280 B	6 lengths of tongue and groove, 5" x 189" long.
234	8 lengths of tanalised 5" x 3" tapering to 4" x 3" x 94" long.	280 C	36 lengths of tanalised tongue and groove, 26 @ 189" long and 10 @ 141" long.
235	8 lengths of tanalised 5" x 3" tapering to 4" x 3" x 94" long.	280 D	40 lengths of tanalised tongue and groove, 141" long.
236	10 lengths of cedar, 6" x 1" x 94".	280 E	13 lengths of tanalised decking board, 142" long.
237	10 lengths of cedar, 6" x 1" x 94".	280 F	13 lengths of tanalised decking board 120" long.
238	10 lengths of cedar 6" x 1" x 94".	280 G	40 lengths of tanalised tongue and groove, 153 1/2" long.
239	11 lengths of cedar 3" x 2" x 94".	280 H	30 lengths of tanalised tongue and groove, 153 1/2" long.
240	12 lengths of cedar, 3" x 2" x 94".	280 J	30 lengths of tanalised tongue and groove, 189" long.
241	12 lengths of cedar, 3" x 3" x 94".	281	Two double extending ladders, one wooden and one aluminium.
242	10 lengths of cedar, 6" x 1" x 94".	282	A large glass carboy in a metal basket and a solid tyred wheel possibly for a barrow.
243	10 lengths of cedar, 6" x 1" x 94".	283	An 'Aladdin' blue flame heater and a chain (no lock).
244	12 lengths of cedar, 3" x 2" x 94".		
245	10 lengths of tanalised 5" x 2" tapering to 4" x 2" x 94" long.		
246	12 lengths of cedar 3" x 2" x 94".		
247	12 lengths of cedar 3" x 3" x 94".		
248	10 lengths of tanalised 5" x 2" tapering to 4" X 2"X 94" Long.		
249	10 lengths of tanalised 5" x 2" tapering to 4" x 2" x 94" long.		
250	9 lengths of tanalised 5" x 3" tapering to 4" x 3" x 94" long.		

284	Three wooden topped Trestle Tables.				
285	Six bags of house coal (164 kgs approx).				
286	Five bags of house coal (136 kg approx)				
287	Five part bags of house coal (110 kg approx).				
288	Three part bags of house coal (73 kg approx).				
289	Three bags of house coal and a quantity of empty coal bags (75 kg approx)				
290	A builders bag of barn dried ash logs.				
291	A builders bag of barn dried ash logs.				
292	A builders bag of barn dried ash logs.				
293	A 'Draper' folding work bench.				
294	A quantity of fencing stakes, approximately 67" long.				
295	A large dog crate, 47 1/2" x 29 1/2" x 2" high.				
296	A quantity of miscellaneous to include: jump leads, jerry cans, galvanized nails, plumbing fittings, etc.				
297	A black metal wheelbarrow on pneumatic tyre.				
298	A quantity of garden items to include: a hose on a reel, a rotary washing line, buckets, knapsack sprayer, cast iron pumpkin, etc.				
299	Three metal workshop shelving units, 28" x 12" x 53 1/2".				
300	A barn find MG YB four-door saloon motor car finished in red and black, (Originally was probably finished in Dark green and Black). Registration No. LWW 239, believed to have been manufactured on the 26th August 1952, Car No. YB/0675, Engine No. XPAG/SC2/17569, Scuttle No. 478 SRZ 12592 - 125 MG 6335. The YB 1,250 cc overhead-valve petrol-engined cars had a four-speed gearbox with synchromesh on the the three upper gears. These cars, the development of which received the talented input of Alec Issigonis (famous for the designing of the Mini) were quite revolutionary at the time in having rack & pinion steering and independent front suspension with wishbones and coil springs, the independent set-up having being developed from the suspension of pre-war MG racing cars. The YB was considered an improvement on the Y(A) in having the handling sharpened-up by the installing of a front anti-roll bar and up-rated shock absorbers, the front drum brakes being of the twin leading shoe type. Inbuilt hydraulic jacking was also novel in the form the "Smiths Jackall" system, which could be selected to lift the front, the rear or indeed all four wheels off the ground. As can be seen, the car has been partially stripped for renovation and the many components were found in the passenger compartment and in the boot. There is no registration document currently to hand and the registration number is not presently recognised at the DVLA, but it may well be				
		301			A Gledhill Stainless Lite hot water cylinder, main pressure model ASL0010 ASL Direct 210, with an associated pressure vessel.
		302			A saw bench, 23" x 32" x 32" high.
		303			Seven pine interior doors, approximately 6' 6" x 27" x 1 1/4".
		304			A 'Bosch' jigsaw and a sander, etc, plus a satin chrome Victorian letter plate.
		305			An acoustic guitar (as found) and a rug.
		306			A bucket of jump leads.
		306	A		A quantity of metal sheets, various sizes.
		307			A tile cutter (sold as seen) 19" x 13" x 7".
		308			A circular 'Silverline' 210mm mitre saw, as new, with cutting discs.
		309			A 'Performance Power' tile cutter with original box.
		310			A 'Hilka' 6" bench grinder.
		311			A 'Lawnflite' garden blower/vac.
		312			A 'Playseat' gaming chair.
		313			A metal toolbox and contents to include: spanners, sockets wrenches, etc.
		314			A tub of hand tools to include: hammer, drills, chisels, planers, etc.
		315			A quantity of miscellaneous to include: a tile cutter, g-clamps, suction grippers, 'Black & Decker' laser level, kitchen doors handles, etc.

316	A 'Premium Kraft PK 6500 W'' petrol dual voltage generator with electronic ignition and long-run fuel tank. (Engine turned and had good compression at the time of lotting).	337	A box of miscellaneous to include: a Solitaire game, medical diagnosis set, , 'Roberts' radio, a bag of keys, a clock, a long shoe horn, etc.
317	A petrol Strimmer. (Engine turned and had good compression at the time of lotting).	338	Three boxes of miscellaneous to include: timer plugs, battery charger, lighting, etc.
318	A 'Mitox' 515SCXX petrol chainsaw, (Engine turned and had good compression at the time of lotting).	339	A set of four mahogany dining chairs, with floral upholstered seats.
319	A 'Spear & Jackson' petrol chainsaw. (Engine turned and had good compression at the time of lotting).	340	A Lloyd Loon style chair and commode.
320	A 'Husqvarna' 36 petrol chainsaw. (Engine turned and had good compression at the time of lotting).	341	Four Ikea kitchen chairs with seat cushions.
321	A 'Performance Power' electric hedge trimmer.	342	A pair of circa 1900 mahogany side chairs and a bedroom chair.
322	A 'Cosmo' welder 145 Gas/Gasless Welder.	343	Four oak dining chairs (seats for restoration).
323	Three power tools, a 'Champion' hammer drill, a cordless 'Nutool' drill with battery and charger, and a 'Mckeller' jigsaw.	344	Five walking sticks.
324	A large 'Chrome Vanadium' spanner and socket set.	345	Five rolls of wallpaper.
325	Three 'Black & Decker' power tools, a sander, a hammer drill and a battery drill (no battery), plus another drill.	346	A box of three vintage tools, two hand drills and a 'Stanley' planer.
326	A 'Powerbase' battery drill with battery and charger, and drill bits.	347	A boxed Tilley storm lamp (as new).
327	A 'Bosch' PSB600RE drill plus a 'Performance Power' drill driver.	348	A vintage cased 'Royal' typewriter.
328	A 'Performance Power' drill driver and a 'Bosch' jigsaw.	349	A potato basket and a wicker hamper, etc.
329	A 'Black & Decker' angle grinder.	350	A leather 'Easytrek' bitless bridle (as new with tag).
330	Three power tools, a 'Power Devil' jigsaw, a 'Bosch' drill and a 'Black & Decker' hammer drill.	351	A large blue enamel teapot.
331	A 'Titan' wall paper stripper and an electric parasol heater (as new in box).	352	A wicker picnic basket (with bottle divider inside), 20" x 12" x 14" (18" including handle) high.
332	Two boxes of miscellaneous to include: Naval cap, shoe last, an oil lamp, Mercury outboard control levers, a clamp type electrical tester, atmospheric old black & white photographs of: ancient stones, a cart wheel by a dry stone wall, an early Aston Martin, 1965 Porsche 911, a Porsche 356, a C-type Jaguar, a scene with a child rubbing the nose of a guard's horse, a glamour photo of young lady, etc.,	353	An electric fire front 20" x 23" high (outside frame).
333	A 'HP' Deskjet 3630 printer/scanner/copier and 'Thule' flush rail feet for car roof racks.	354	A four fold glass shower screen (as new).
334	An old oil lamp and old leather belts.	355	Two crates of Demi Johns, and a tub of as new beer/cider bottles.
335	Three Tilley lamps, with spares and instructions.	356	Three containers of hexagonal Honey Jar, unused, some with lids and a box of jar lids, unused.
336	A box of vintage miscellaneous to include: blow torches, wing mirrors, 'Cowley' automatic level, 'Miranda' binoculars 10 x 50, etc.	357	A large quantity of 'Aero Modeler' and 'Model Airplane' magazines.
		358	Two boxes of miscellaneous to include: microphones, electrical scart leads, etc. a foot warmer, kitchen utensils, etc.
		359	Two boxes containing hand tools,a mallet, cutlery, kitchen utensils, etc.
		360	Two framed film posters, one being 'Wallace & Gromit Curse of the Were Rabbit' and the other 'Heroes-Batman and Robin'.
		361	A grey painted sofa bed.
		362	A 'Halfords' child's car seat.
		363	A bamboo Egg seat.
		364	A metal table top filing drawer, 11" x 20" x 4" high.
		365	Three sets of snooker balls.
		366	A wall mirror, 22 1/2" x 35 1/2".
		367	A circular wicker log basket, 19" diameter x 14" high.
		368	An 'Enco' cooking pot, plus a copper saucepan with lid.

369	A square wicker log basket, 16" x 16" high, with two mounted brass electric lanterns.	403	A box of miscellaneous to include: a saw, chain, bicycle lock, etc.
370	A brass coal box with a pair of bellows.	404	A large blue and white bowl having a floral and butterfly design, together with a 'Bristol' meat plate (as found) and a vase.
371	A quantity of cookware to include: Le Creuset dish and saucepan, enamel pots with brass handles, 'Berndes' stock pot (as new), etc.	405	Two boxes of miscellaneous to include: a football, golf tees, cables, etc.
372	Two boxes of miscellaneous china, glass and ornaments, etc.	406	A box of miscellaneous glass to include: vases, electroliers, beehive stem wine glasses, etc.
373	Two Shooting sticks and a horn handled walking stick/crook.	407	A pair of Land Rover head lights.
374	A folding card table, plus another folding table.	408	Six boxes of lorry parts to include: 'DAF' king pin, mirrors, lights, etc.
375	Two wooden stools.	409	Two boxes of ceiling lights, wall lights, etc.
376	Two figures and two vases all in Art Deco/Classical style with artificial flowers.	410	A box of miscellaneous to include: a cast iron kingfisher, doorstops, insulated teapot, hedgehog door wedge, costume jewellery, etc.
377	A spindle back chair painted in blue and white.	411	A quantity of camping equipment to include: a boxed kitchen, air bed, lanterns, a kettle, fish poacher, etc.
378	A corner cupboard with drawer, 27" x 10" x 30".	412	A wooden box containing architectural drawings, etc.
379	Four curtain poles of various lengths, one as new still in box, plus a bag of finials and rings.	413	Two boxes of cushions, blankets/throws, etc.
380	Two golf bags and contents, plus another bag containing a caddy, etc.	414	Two boxes of miscellaneous to include: 'Toshiba' radio, brass chargers, china, coffee pots, etc.
381	Four veneered items to include: chest of drawers, sideboard, corner cupboard and music cabinet.	415	A box of hammer drills (some boxed), wrought iron pricket stand, etc.
382	Four shooting sticks.	416	A wooden trunk, 35" x 19" x 18".
383	A wooden fishing rod, nets, etc.	417	Four boxes of miscellaneous to include: jardinieres, a Spanish bull, Dandy books, treen, etc.
384	A golf bag and contents and a caddy.	418	A 'Mary Perkins Hat Box, Paris Airshow 95' and contents of tins of buttons, etc.
385	Two directors chairs and a fold up wooden table.	419	Two wicker hampers (empty).
386	A vintage golf bag and clubs.	420	A 'V-Fit' ab exerciser.
387	Two coffee tables and an occasional table.	421	Two boxes of to include: a ladies ski suit, salopettes, ski gloves, goggles and Diving wet suit.
388	A quantity of golf clubs.	422	A black suitcase on wheels.
389	A side table having a mosaic style top, (as found).	423	A box of household miscellaneous to include: sundae dishes. treen, a toast rack, wall art, etc.
390	A quantity of kitchen unit doors, etc.	424	A vintage hand sewing machine 'The Free', plus an electric 'Singer' sew machine.
391	A meat safe (door need reattaching), 29 3/4" x 15" x 36 1/2".	425	A travel suitcase on wheels, metal hooks, etc.
392	A carver chair, Ercol style.	426	Two boxes of household miscellaneous to include: china, tins, a magnifier, a compass, etc.
393	A TV/side cabinet, 35" x 16" x 24".	427	A cream and gilt jardiniere on stand, 30" tall (as found), and a ceramic elephant stool, 17 1/2" tall.
394	Three pine topped trestle tables, two 6' long and one 5' long.	428	Two boxes of miscellaneous china to include: cheese dishes, spaghetti jar. vinegar jug, jugs, bases, etc.
395	Two vintage side cabinets on castors.		
396	Six tins of 'Dulux-once' paint in 'Ivory Lace' colour and a tin of cream masonry paint.		
397	Three fire extinguishers including foam and CO2, plus a fire blanket.		
398	A copper warming pan and two walking sticks.		
399	A quantity of outdoor games to include: boules, croquet, cricket, roller blades, etc.		
400	Four boxes of miscellaneous to include: china, glass, books, etc.		
401	A quantity of electroliers.		
402	A box of dog walking items to include: an extending lead, travel drink bottle, bowls, etc.		

429	A box of metalware to include: EPNS teapot, stainless steel hot water pots, etc, and Battleship game, etc.	452	Two boxes of miscellaneous china to include: cherub and fairy ornaments, posies, vases, etc.
430	Two boxes of miscellaneous items to include: Chiswick ceramics, 1953 Silver Jubilee mugs, cutlery, glass mugs, etc.	453	A ceramic stick stand with walking sticks, carpet beater, etc.
431	Two boxes of Cherub ornaments, a mirror, a green fish, etc.	454	Three boxes of china, terracotta pots, jugs, ornamental teapots, vinegar bottles, etc.
432	A box of meat plates, a Royal Albert blue roses wall clock, decanter, glass bells, etc.	455	A box of Kronenberg glasses, rabbit ornaments, etc.
433	A box of items to include: a glass jelly mould, textured glass, apple shaped dishes, steak forks, etc.	456	A box of mixed china and glass.
434	A box of miscellaneous to include: ornaments, tins, Willow teapot (no lid) a children's play tent, etc.	457	A metal framed sofa bed, 79" long x 38" wide (closed).
435	Three boxes of miscellaneous china to include: tureens, a meat plate, vases, dog ornaments, etc.	458	A child's car seat.
436	Three boxes of CD's and LP's.	459	Three rolls of fabric.
437	Two boxes of miscellaneous to include: VHS tapes, vintage Scalextric, 'Duette' railway controller, etc.	460	A pair of corded telephones by Chameleon Connect (boxed).
438	A large 'Elizabeth' doll from Paradise Galleries, plus three other smaller dolls.	462	An 'Autobar' Coffee Art Plus coffee machine.
439	Two boxes of household miscellaneous to include: candlesticks, candles, cherub ornaments, etc.	463	A child's armchair, Lindham playpen and a bird box with camera set-up.
440	Two boxes of miscellaneous to include: brass items, galleries trays, plated tableware, lanterns, etc.	464	Two boxes of china, glasses, Bush steam dry iron, Moulinex electric carver etc.
441	A box of stainless steel tea and coffee pots, an Electrical Master set, cast iron weights, etc.	465	Gruffalo Snakes and Ladders game, plastic cones, knitted jumpers etc.
442	A crate of drinking glasses.	466	A quantity of framed pictures including horses, harbour scene, needlework oriental scene etc.
443	A box of miscellaneous Christmas decorations, etc.	467	A Sony cinema surround sound system and amplifier.
444	Three boxes of various items to include: Religious prints, jugs, egg cups, drinking glasses, ornaments, etc.	468	A quantity of underlay offcuts.
445	Two boxes of miscellaneous drinking glasses.	469	Desk lamps, fan heater, extension leads, waste paper bin etc.
446	Two boxes of DVD's, cameras and cameras and action figures (Spiderman, Batman, etc.).	470	A hot chocolate machine and two coffee machines including Bravilor Bonamat and Bunn Axion, all for commercial use.
447	Three boxes of framed prints, decoupages, decorative tile, etc.	471	Four boxes of miscellanea including Pewter tankards, Scrabble, seagrass tray, A4 folders, plates stands etc.
448	A quantity of artificial plants in various containers, a wrought iron lantern, ceramic pots, a jug, etc.	472	A Bravilor Bonamat coffee machine and jug, both boxed, as new.
449	Three boxes of household miscellaneous items, to include a painted box, a letter rack, cherub painted jars, etc.	473	An old school desk, 22" x 23" x 30".
450	Two boxes of miscellaneous china to include: cow creamers, salt and peppers, oven dishes, etc.	474	A Lloyd Loom style chair and linen basket plus a wicker pant stand.
451	Three bread bins, two ceramic decorated with fruit and one terracotta with a wooden lid.	475	Thule child's bicycle seat.
		476	Folding sun lounge with cushion.
		477	A bag of miscellanea including Black & Decker jigsaw, painting and decorating equipment, part roll of weed membrane etc.
		478	A 'Makita' battery radio (believed in working order).
		479	A 'MacAllister' reciprocating saw and a 'Performance Power' bench grinder (both believed to be in working order).
		480	A 'Yuasa' vehicle battery.
		481	An 'Exide' vehicle battery.

482 Three electric hedge trimmers, (understood to be in running order), (one battery operated), extension lead, etc.

BRIC-A-BRAC (INSIDE LOTS)

501 A Mahogany Stag "Minstrel" dresser, 55 1/2" x 67 1/4" x 18".

502 A wicker stool finished in white, 14" square x 20" high.

503 Two boxes of books, CD's, etc.

504 A wall shelf with hooks and a piece of board.

505 A glazed corner cabinet, 23" x 17" x 6'.

506 A pair of white double wardrobes having brass and ceramic knobs, 31" x 22" x 69".

507 A single headboard, 4'.

508 A quantity of pictures and a mirror.

509 A 'Hereford Ex-Service' suit, plus another, both 42" Chest.

510 A 'Timberland' gilet, size M.

511 A leather bomber jacket (as found) possibly size M.

512 Three embroideries, plus a print.

513 Three framed and mounted photographs.

514 A suitcase containing handbags, a wicker basket with a reading light and a seagrass basket with bags, a sewing box, etc.

515 A box of empty photograph albums and a print.

516 A box of cross-stitch books and empty sewing box, pin cushions, etc.

517 A G-Plan headboard with integrated bedside tables, approx wide 3' high x 17 1/2" deep.

518 A small pine double bed.

519 A large Berber style Carpet, 126 1/2" x 94" (3.2m x 2.4m).

520 A large thick pile Rug in red and terracotta having a large elephant foot pattern, 162 1/2" x 114 1/2".

521 A large border patterned Marrakesh Carpet in red and cream, 107" x 70 1/2".

522 A border patterned and fringed rug in blue, cream and red (worn), 146" x 115".

523 A small pine double bed.

524 A large pine framed mirror, 36 1/2" x 54 1/2".

525 A fold out bed.

526 Two 'Ercol' armchairs one with Fleur-de-lys pattern to back rest and a foot stool, all with floral upholstered cushions.

527 Three paintings, (one pastel and two on canvas).

528 A contemporary Buddha statue, 30", and a mask.

529 A pair of gent's 'Kickers' boots (Euro 44) (as new in box).

530 A ceramic shabby chic lamp base, 12" tall.

531 A Mini Bowden child's Guinea pig coat aged 6-7, Next size 1 child's boots, a Pokeman watch and plush toy, GHD hair straighteners, etc.

532 A 'G-Plan' Teak Sideboard, 74" long x 18 1/2" x 48" high.

533 A box of mixed linen.

534 A quantity of framed embroideries, plain paper, etc.

535 A 'G-Plan' Teak dressing Table 60" long x 18" x 47" high and a dressing Stool having teal upholstered seat.

536 A rustic oak and pine wall hanging display Cabinet, 29" x 42" x 7 1/2" deep.

537 A small Mexican Pine Sideboard, 3' x 17 1/2" x 33", plus a small occasional table.

538 A bag of fabric cut offs to include Tweed, etc.

539 An elm seated slat back kitchen Chair having floral rosette to top rail.

540 A 'Roca' black leather Briefcase.

541 Four grey plastic and chrome stacking Chairs, marked 'Louis 20 by Starck for Vitra' to base.

542 A pair of table lamps, plus four others.

543 Two table top metal filing boxes with keys.

544 A bevelled gilt framed mirror, plus another in a pine frame.

545 Two wall clocks, one being 'Sewills, Liverpool' and the other 'Quartz Westminster chime' (as found).

546 A circular Oak dining table raised on a turned central pillar on cruciform feet, 54" diameter x 29" high.

547 Two green and cream polka dot 'Laura Ashley - Lemington' throws/blankets, 2 m x 1.5 m.

548 A set of four Mahogany dining Chairs having green Rexine seats.

549 A Pine kitchen Table having a central drawer, 62 1/2" long x 34 1/2" x 29" high.

550 A painted wooden Trunk, 32 1/2" x 20" x 13".

551 An Oak occasional Table having barley twist legs, 17 3/4" diameter x 28 1/4" high.

552 A mixed wood Hall Table with drawer having brass drop handles (one missing), 33" x 20" x 27 1/2".

553 A rustic Oak Table/Desk having two frieze drawers, 27" x 48" x 30" high.

554 A 'G-Plan' nest of three tables.

555 An angle poise desk lamp and a pair of field binoculars marked 'Dolland London'.

556 A teak compact cabinet with pull out table, 20" x 17" x 3'.

557 Two table lamps and shades having Putti figures to base.

558 A Lord of the Kings toy dragon and rider, a model Jaguar car, a wireless keyboard, etc.

559	A 'G-Plan' coffee table having a central glazed panel and a lower shelf, 54" x 20" x 17".	587	A rattan conservatory chair.
560	A contemporary Eastern hardwood coffee table, 54" x 29 1/2" x 16".	588	Two 'Mag-Lite' torches and a brush pot.
561	A box of costume dolls.	589	A Pine double Wardrobe, 24" x 47" x 74 1/2" high.
562	A box and a bag of mixed linen, plus a pair of white leather boots.	590	A framed print of the 'Mappa Mundi', 30" x 42".
563	A carved Mahogany Chair on castors having green upholstered fabric in Fleur-de-lys pattern.	591	A Pine wall mounting Plate Rack, 24 1/2" x 21" x 8".
564	Three miscellaneous chairs.	592	A mixed wood bookshelf, 34" x 10 3/4" x 40 1/2".
565	A set of six elegant circa 1900 oak framed Dining Chairs having turned and lobed front legs, the back rest with stylised floral blooms and domed beads, the seat upholstered with Rexine type material.	593	A Mahogany sewing box and contents, and an upholstered footstool.
566	A metal Moroccan style hanging ceiling light.	594	A contemporary pine TV cabinet, 31 1/12" x 19" x 27 1/2".
567	A serpentine fronted Side Table, the drawers with brass drop handles, 35 1/2" x 19 1/2" x 30 1/2".	595	A Mahogany jardiniere stand, 13 3/4" diameter x 39 1/2" high.
568	A 'Kenwood' saucepan and lid, two bags and a blanket.	596	A box of mixed linen.
569	A quantity of books, cookery, 'Military Pistols Revolvers', a book of Hymns, etc.	597	An Oak Desk having central drawer flanked by two short drawers, 42" x 18" x 28".
570	A Mahogany Pembroke table standing on turned lags with brass castors, 30" x 18 3/4" extending to 25 3/4" x 29 5/8" high.	598	An 'Ercol' corner Cabinet, 28" x 18" x 6'.
571	A set of six 'Ercol' Fleur-de-Lys Windsor Chairs.	599	A vintage brown leather suitcase.
572	A contemporary three fold screen.	600	Formula One framed photographs, Christmas lights, portable house phones, etc.
573	A Mahogany Cheval mirror, 61 1/2" tall.	601	Two pine bedside tables.
574	A Mahogany gentleman's wardrobe, 38" x 20" x 72" high.	602	A teak cabinet, 15" x 20" x 30 1/2".
575	A veneered wine table (as found) plus a table with leather inset (as found) 19 5/8" x 33" extending to 54" x 28 1/2" high, and a smaller occasional table.	603	A box of Bullion fringing in various colours.
576	A pine Nest of two tables.	604	Five drawer Chest of drawers, painted in pale blue, 24" x 16" x 37".
577	Two pairs of men's walking shoes/boots-shoes, UK size 11, boots UK size 10.	605	A pair of chrome based table lamps, plus another with red shades.
578	A contemporary Eastern hardwood hall table, 31 3/4" x 13 1/2" x 30 1/2".	606	An Edwardian cross banded light and darkwood strung dressing table, the bevelled mirror supported on a pair of trinket drawers, the base with one long and two short drawers, 41 5/8" wide x 21 1/8" deep x 61" high.
579	A canvas bound trunk and contents, 22" x 18" x 17".	607	A box of miscellaneous including lamp bases, shades, toiletries, little cushion, etc.
580	A nest of three tables having green leather inserts and glass tops.	608	A French toaster/roller grill.
581	A brown leather 'Radley' handbag (used).	609	A Mahogany side Table with frieze drawer, 21 3/4" x 17" x 26 3/4".
582	A wooden correspondence box, 20" x 13" x 8 1/2".	610	A small box of cookbooks.
583	A Pine kneehole dressing table/desk, 54" x 17 1/2" x 29 1/4".	611	A mixed woods Pot Cupboard, 14 1/2" x 20" x 33".
584	An Elm balloon back, cane seated chair.	612	A brass letter box, plus another, along with a door knocker.
585	A Mahogany display cabinet, 58" x 12" x 23 1/2".	613	A Meopta Axomat 3 Photographic Enlarger, boxed.
586	A carved Oak hall Chair.	614	A stained Oak Chest of two short over three long Drawers having brass drop handles, 42" x 18 1/4" x 3'.
		615	A 'Kampa' folding camping chair.
		616	A scrubbed Pine chest of two short over two long Drawers with brass drop handles, 32 1/2" x 16" x 35".
		617	A Mahogany gateleg drop-leaf side/occasional Table, 22" long x 21 1/2" high.

618	A Mahogany Chest of two short over three long Drawers with brass drop handles and lock escutcheons, 29 1/2" x 18" x 30".	644	A floor standing Mahogany display Cabinet, with brushed pink interior, 35 1/4 x 11 1/8" x 62 1/8" high.
619	Vintage dolls and pram, plus a framed print of roses.	645	A box of DVD's to include: Black Adder, West Wing, Downton Abbey, etc..
620	A carved Oak blanket Chest and contents, 15" x 37" x 18".	646	A wrought iron folding corner Whatnot with cane shelves, 40 1/2" tall x 19" wide x 11" deep..
621	An Oak Bureau, 30" x 18" x 40" high.	647	Two small gilt picture frames and a wooden kitchen chair.
622	A set of four 'Sony' speakers.	648	A 6' Roman blind in cream multi coloured stripes.
623	A Pine kitchen Island on castors with frieze drawers, slatted shelves and wine rack, 37 1/2" x 18" x 31 1/2" high.	649	A square coffee Table marked 'Made in Denmark' to base, 28" square x 20" high.
624	A pair of lined pleated purple curtains, 74" wide x 86" drop, plus a matching Roman blind.	650	Six 'Ercol' Windsor spindle back Chairs.
625	An Oriental style cabinet, 2' x 14" x 30" high.	651	A pair of Mahogany framed Rexine seated side Chairs standing on turned and fluted legs.
626	Two pairs of curtains.	652	Two bevelled wall mirrors and a tray.
627	An Art Nouveau Washstand on castors with marble top and green tiled back, 3' x 18" x 54".	653	A low 'Ikea' style chair.
628	A cane backed Armchair with upholstered seat and barley twist stretchers, (cane has damage to one side), 39 1/2" high x 22" wide x 28" deep.	654	A Victorian Mahogany nursing Chair upholstered in red fabric with stud detail.
629	A Pine blanket Chest, 30 1/2" x 18" x 12 1/4" high.	655	Two boxes of home decor of mostly cherub ornaments, etc.
630	A high backed Chair painted in cream with cane seat.	656	A vintage 'Goblin' Teasmade and an 'Aldis' projector.
631	A Chest of two short over two long Drawers with turned knobs, 47" x 21" x 34".	657	Two bags of scatter cushions.
632	A low side Chair on castors having back and upholstered seat.	658	Two chairs, one being corner elbow, the other an armchair, both with blue upholstered seats.
633	A stained Pine Bureau, with key, 3' x 17" x 44" high.	659	A 'Husqvarna' sewing machine.
634	A pair of 'Dunelm' light shades.	660	A box of light bulbs, Spice Girls Topps figures, David Winter "Orchard cottage" ornament, etc.
635	A box of Classical LP's.	661	A 'Hammond' digital organ with stool and box of accessories.
636	A contemporary Mahogany and other woods extending Dining Table, standing on six turned legs, 42 1/2" x 62" extending to 80" x 30" high approx.	662	A bamboo stool and basket.
637	Three bags of clothes, shoes, etc. to include: 'Fat Face' boots UK size 7, 'Vans' trainers UK size 3, 'North Face' men's top size (small), etc.	663	A rustic Pine corner Cupboard, 36" x 47 1/2" high x 20" deep.
638	A typewriter, a record case with records, a quantity of slides from 1950's/60's.	664	A small quantity of handbags to include: Harris Tweed, etc.
639	An Oak dining Table on peg jointed stretchers, 57" x 37" x 29 1/2" high.	665	A Mahogany piano Stool with terracotta upholstered seat.
640	A 'Toyota' sewing machine, a box of embroidery patterns and a miniature sewing machine.	666	A quantity of miscellaneous to include: a wicker basket, a hat box of feathers, black lace, telescope, etc.
641	A basket of thread, knitting books, patterns and needles.	667	A pair of Danish style Dining Chairs having caramel leather seats and back rests.
642	An Art Deco walnut dressing table with glass top, 41 1/2" x 21" x 62" and a cane seated stool.	668	A 'Lenovo Idea Pad 110-15ACC' 15" Laptop, with 1.6 GHZ Pentium, 400 GB memory (seldom used) with bag and charger.
643	A glazed bookcase with double doors, 41 1/2" x 12 1/2" x 64".	669	A veneered demi-lune Hall Table, 30" x 15" x 30" high.
		670	A box of LP's to include: Jim Reeves, Classic Rock, etc.
		671	A wrought iron wall mirror, approximately 17" diameter.

672	An acoustic guitar.	706	A table top chest of drawers, 24 3/4" x 10 1/2" x 8 3/4".
673	Two vintage board games to include: 'Totopoly' and 'Axis & Allies'.		
674	A 'NAD' cassette deck, amplifier, stereo tuner, a pair of 'LINN' speakers and a quantity of cassettes.		
675	Two canvas prints.	1001	An accumulation of GB First Day Covers and commercial covers and presentation packs and much mint/used material in albums/binders/loose, from 1960's to 1980's, including complete sheets, some Commonwealth/World oddments also noted.
676	A wing back Armchair, upholstered in red knitted style fabric by 'CFG Furniture'.		
677	Two pairs of eyelet curtains 'Next' tartan, 89" x 9" and 'Dunelm' gold 66" x 54".	1002	A large quantity of Stamp Albums and stock book of GB KGV1/QE11 and Channel Islands/Isle of Man, and a collection in a large packet and other World/Commonwealth material on stock cards, in stock books, etc.
678	A large pottery lamp and shade approximately 33" tall including the shade.		
679	A large Pine blanket Box/chest, 39" x 24" x 23".	1003	A quantity of Commonwealth 1937 Coronation commemorative Stamp Albums with mint collection and used, on stock cards, along with QE11 Coronation set NHM with other 1937 commemorative Coronation issues and a 1936 Edward VIII Booklet and quantity of cigarette card part sets.
680	An 'Orange Crush 10' guitar amplifier.		
681	Two boxes of ornate home decor to include: mirrors, candle holders, etc.	1004	A shoebox with mostly used GB on and off paper Stamps, (mainly KGV1 and QE11).
682	Two boxes of ornate home decor to include: pricket stand, wall shelves, boxes, etc.	1005	A collection of Commonwealth Stamps in two stock books and loose in a shoebox, mint and used (mainly KGV1 and QE11).
683	A concrete bust of Caesar (possibly) 17" tall.		
684	Two boxes of cushions to include: sheepskin. tapestry, etc.	1006	A quantity of ephemera in a large box to include: cigarette cards, old newspapers, war-time pamphlets, etc, some material from the Channel Islands occupation, late 19th century 'Atlas of Antiquities', etc.
685	A 'Celcus' 32" TV with remote.	1007	A Tunbridgeware writing Slope with upper tray, 11" x 8 1/2" x 5 1/4".
686	A 'Panasonic' 42" TV with remote.	1008	A large carved ebony Elephant, 17" tall.
687	A mid century standard lamp (no shade).	1009	A group of carved ebony elephants, 23" long (some damage).
688	A boxed 'Mikomi' DVD player.		
689	A box of linen, scarves, 'House of Tweed' gloves, patchwork jacket, etc.	1010	A large carved Tribal hunter figure, 24" tall.
690	A bag of sporting books to include: Ian Botham autobiography, Cricket Jokes, etc.	1011	A small 19th century terracotta plinth, 8" tall.
691	A box of books on canals, flowers, etc.	1012	A metal and glass Art Deco style Lamp, 11 1/2" tall.
692	A side chair and hearth rug, 25 1/2" x 33".		
693	An Apple iMac G4 M6498 EM No. 1873 all-in-one Personal Computer having hemispheric base and liquid-crystal display, 700 MHz PowerPC G4 (2.1), 256 MB SDRAM, MAC OS X Version 10.4.11, with apple keyboard, working order, mouse and power cable not included.	1013	A 'Dunhill' lighter.
694	Two ruck sacks, one being 'Berghaus' and the other 'Timberland'.	1014	A large wooden pestle, 29 1/2" tall.
695	A pedestal stand, 23 1/2" tall.	1015	An enamel Sign 'Corona Sparkling Drinks', 30" x 20".
697	A Pub mirror and two framed photographs.	1016	Five antique safety razors to include: Bakelite Ever-Ready razor in original box.
698	Two table Lamp bases, one as found.	1017	A small quantity of miscellaneous to include: International organ Badges, "Days Gone By" cars, vintage Old Spice shaving mug.
699	A small amber crackle glass table lamp.		
700	A circular 'G-Plan' Teak extending dining table, 47" diameter x 29" high with set of six Dining Chairs.	1018	A novelty wind-up tortoise shaped counter Bell.
701	A box of picture frames.		
702	A 'G-Plan' four drawer Chest, 17 1/4" x 28 1/2" x 29 3/4".		
703	A 'PYE' record player.		
704	A painted four drawer chest, 20" x 17" x 30".		
705	A hardwood chest/blanket box, 39 1/2" x 19" x 22".		

Saturday 10th January 9am
MISCELLANEA

1019	A small quantity of miscellaneous to include: replica military badges, AA car badge, Ronson lighter, epns vesta case, door knocker, etc.	1041	A box of miscellaneous to include: a Cloisonne vase on a plinth hand painted with roses, 6 1/2" tall, a green onyx footed trinket box with hinged lid, 6 3/4" x 5" x 2", a brass counter bell and candle snuffer, Florentine style jewellery box and a pair of classical style oval mirrors, each 16" x 12 1/2".
1020	Two silver medals, both Birmingham, one for Hereford Schools cup, the other for Football League.		
1021	A silver bladed Fruit Knife with mother of pearl handle and another much smaller.	1042	A plaster wall moulding of two Putti supporting architrave, 17" x 12" x 4 1/2" (hangers to the back) plus a framed cast of Socrates, 9" x 7 1/2" x 2 1/4" deep and two casts of classical scenes.
1022	A metal vintage Colliery sign, 12" x 8".		
1023	A quantity of postcards, stamps, woodcuts, etc.	1043	A vintage ladies Dannimac, trench coat, made in Britain, size 16/44.
1024	A box of miscellanea including medals, lighters, gold tooth, bakelite bowl and Tunbridgeware Box.	1044	A pair of decorative soapstone Dogs of Fo, having grey mottled appearance seated on rectangular bases, 6" tall.
1025	A large cotton floral patterned Quilt, double.		
1026	A carved wood Goat/Horse, 9" x 9".	1045	A large Urn with alabaster handles and pedestal, having light fitting, 21 1/2" tall (as found).
1027	A glass Chess set (complete), a contemporary quartz clock and a cased brass condiment set.	1046	A three section painted terracotta decorative Temple with seated Buddhas and gilt highlights, 32" tall, as found.
1028	A small quantity of painted and gilt plaster Cherub wall plaques.	1047	A heavy composite wall plaque of a winged cherub, 9" tall.
1029	A Mappin & Webb Tantalus with three matching hobnail cut decanters with ceramic decanter labels, dated 1880, (key absent).	1048	A heavy modern composite Bust of Michelangelo's David, 13 1/2" tall.
1030	A contemporary Bankers lamp.	1049	An alabaster and metal Table Lamp with tasselled shade, 36 1/2" tall including shade.
1031	A pair of contemporary gilt cherub Candlesticks on marble effect bases, 14" tall.	1050	A small Indonesian made white painted Cabinet with two doors concealing three interior drawers, 17" tall x 12" wide x 7" deep.
1032	A brass cased Carriage Clock with key.	1051	An Eastern style Bird Cage in hardwood, with interior pull out tray, 27" wide x 12" deep x 25" tall.
1033	A pair of contemporary cream coloured Cherub Corbels, 12 1/2" wide x 12" tall.	1052	An onyx Chess board Table standing on cast metal legs with complete set of metal chess pieces.
1034	A terracotta 'Dryad' wall Pocket with applied flowers and fruit, 14" wide x 12" tall.	1053	A darkwood hall mirror with four cast iron coat hooks, 19 1/4" wide x 16".
1035	A large and a small pair of composite Busts in the form of cherubs, 16" wide x 8 1/2" tall.	1054	A pair of five branch Electroliers with droppers.
1036	Two boxes of decorative plaster mouldings to include a rose wreath, classical garland of roses and flowers, grapes and fruit, etc. some painted gold/black and coloured.	1055	A French style crystal chandelier.
1037	Two Parisian style Busts, Italian made, marked to base 'Boy Bust' and 'Girl Bust', 7" high.	1056	An ornate Baroque style white painted floral Mirror with double candle sconce, 41" tall.
1038	Five contemporary classical Busts, Michelangelo's David on a marble plinth, 6 1/2" high, Angelica Maria regal lady, 9" high, etc.	1057	An ornate moulded oval Wall Mirror, finished in white, 26" x 22".
1039	A metal monastery pull Bell, 16" total length x 8 1/2" from the wall, the bell marked 'Vocem-Meam-Andi, que-Me-Tengit- Hear my voice whoever touches me'.	1058	An Art Deco style bevel edged wall mirror.
1040	A box containing shells and fossils, etc. to include: a shell and wire hanging arrangement total length about 47", jars of various shells, an amethyst crystal rock cluster and ammonite fossils, etc.	1059	A two fold blue and yellow painted table Screen with decoupage panels of exotic birds, each panel 24 1/2" tall x 16 1/2" wide.
		1060	A marquetry Wall Clock with scroll base, having pendulum, 36" tall with turned supports (running briefly at the time of lotting).
		1061	A composite gilt finished floating Shelf, 30" wide x 5" deep x 10 1/2" tall.

1062	A hall Mirror with turned spindles having shelf, 30" tall x 18 1/2" wide.	1083	A quantity of ephemera, some relating to Joan Martin May (illustrator) including three wooden signs, 'Dibbers Diary' book draft with some sketches and prints of gnomes, two other sketch books of uniforms/outfits, etc.
1063	An oval bevel edge Mirror with gilt finish pediment, 33" x 16 1/2".	1084	A heavy Bust of a lady with flowers in her hat, indistinctly signed to rear, 18 1/2" high.
1064	A quantity of mixed Stamps (mostly in sealed envelopes), unused sheetlets, etc.	1085	A "Thornton Pickard" vintage Photographic Enlarger "Special Ruby Enlarger.
1065	A cased 'Corona' professional Typewriter in burgundy, with accessories.	1086	A box of vintage Cameras and binoculars including Yashicaflex, Agfa Holly 10 x 50, etc.
1066	A stained Pine Box, 17" wide x 10 1/2" x 7 1/2" high, with 'Teachers Highland Cream Scotch Whisky' advertisement to the interior.	1087	A Fox fur wrap by Fenn Wright and Manson.
1067	A pair of cast iron duck doorstops.	1088	A good quantity of complete sets (wrapped) Brooke Bond tea cards and a quantity of loose Brooke Band tea cards.
1068	Two turned wooden Truncheons, one painted black with gilt 'VR', Crown and 'Police' and marked to handle indistinct '.....Field.....Travistock'	1089	A Banjo barometer/thermometer (thermometer a/f), 19" tall.
1069	A 'BR' Railway lamp.	1090	A small quantity of miscellaneous to include: a quartz carriage clock, Epns teapot, sugar tongs, napkin ring, part dressing table set, etc.
1070	A small Eastern style carved Cupboard with sliding door, 14" wide x 8" x 13" high.	1091	A pair of Brass Oil Lamps, approx 23" high including chimneys.
1071	An Italian 1919 'De Meglio' Mandolin (lacking strings).	1092	A boxed set of Tyrolite Bowls, labelled for Pandy Bowling Club.
1072	A heavy cast iron Doorstop in the form of a Soldier riding a horse, 9 1/2" high.	1093	A tray of African figures and a wooden bowl.
1073	An Autograph book containing various signatures from actors and BBC personalities, etc. to include: Patrick Moore, Raymond Baxter, Ronnie Barker, Derek Jacobi, Tom Baker, Claire Bloom, Eric Porter, etc.	1094	A large carved Bust of a Pharaoh, 21" tall.
1074	A boxed cocktail set and a boxed wine set.	1095	Two oval Indian wooden wall plaques of dancers, 12" high.
1075	A quantity of wall masks to include: Studio Pottery wall mask with ammonite detail, marked BKA to the rear, a carved 'Moon' mask, ceramic Venetian style mask, an Indian elephant ceramic wall pocket, etc.	1096	An inlaid Edwardian two tier plant stand, 13 1/2" diameter x 38" high.
1076	A Dutch military type Khaki coloured Jacket with fleece lining.	1097	A carved Indian toy of an elephant balancing a man on a high wire, 16 1/2" tall.
1077	A quantity of miscellaneous to include: Metamec clock, painted shoe last, dressing table set, barometer, etc.	1098	An early 19th century Mahogany sarcophagus Tea Caddy, and another similar Tea Caddy and a smaller Walnut tea caddy (with key).
1078	Four models of sailing ships.	1099	A very finely made Tea Caddy of the Regency period with eight sided embossed lead/pewter cover and lid, 5" wide x 3 3/4" deep x 4 3/4" high.
1079	Three pairs of Binoculars to include: a leather cased set 'Reconnoitre' 8 x 25, 'Zenith' 10 x 50, Eikow opera glasses, etc.	1100	A fine 19th century Tortoiseshell Magnifying Glass in beautiful condition, 8 3/4" long x 4 1/4" diameter.
1080	A quantity of cameras and mobile phones to include: Polaroid 1000 land camera, Kodak Brownie 127, Kodak instamatic 200, Samsung and Alcatel phones, etc.	1101	A quantity of old keys, Parker pens, fishing scales, etc.
1081	A Panasonic Lumix DMC-FS11 14 mega pixel digital camera, Casio QV-R62 6 mega pixel digital camera and a Nintendo DS lite, etc.	1102	A Pottery match Striker.
1082	A quantity of ephemera, etc. to include: scrapbooks, 'The West Riding' by Arthur V May book, 'Historic Arms of Merrie England' by Quaker Oats, Bartholomew's maps, etc.	1103	A needlework Sampler worked by Sarah Broomhead, 1849 aged 10, with honeysuckle border, various motifs, tree of life/knowledge with Adam and Eve and snake, in a rosewood/gilt frame (in fine condition), 22" x 22".
		1104	A brass Corinthian column Lamp base, approx 18" high.

1105	An old model of a twin sail fishing Boat on a stand, in very good condition for its age, 32" long x 32 1/2" high.	1129	A cased Mah-jong set and a set of six boules in a case.
1106	A Treen folding Crib-board with red markers.	1130	A quantity of oriental miscellaneous to include: Treen stands, boxes, Chokin Iris picture, etc.
1107	A salt glazed Cloche with lid, 12" tall.	1131	A 'Salters' household Scales.
1108	A book - 'The Gwent County History', Vol I.	1132	A quantity of miscellaneous to include: Ross London telescope (as found), a brass oil lamp base, Diopticon 10 x 50 Field Binoculars, County Cricket Official Medallic First Day Cover, etc.
1109	A framed piece of Inca Mummy wrap from Peru, over 1000 years old, 6 3/4" x 5" including frame.	1133	A quantity of Treen to include: carved panel of an owl perched in a tree, bookends, barometers, a crop, elephants, etc.
1110	A milkmaid's Yoke.	1134	A boxed Geometry set by G.4.
1111	A small glass display Cabinet with hinged door, 12" x 8" x 10", (door hinges a/f).	1135	A quantity of First Day Covers, sheets of mint Tanzanian stamps and pre-decimal 4d, UK Christmas stamps, plus a set of 1982 Spanish Reseta coins plus Osmiroid fountain pen.
1112	A pair of small glass chandeliers, both a/f.	1136	A short edge to edge dark Fur Jacket with brown lining and inside pockets by 'Molyneux Re-model' of Grosvenor Street, London, size medium.
1113	A 1950's Singer sewing machine, converted to electric, with additional accessories.	1137	An olive green Silk Parasol with bamboo handle (some holes and small damage to fabric).
1114	A vintage GPO black bakelite Telephone, with rotary dial and original labels, circa 1937-1940's.	1138	A pair of small glass Chandeliers.
1115	A quantity of various Welsh rugby programmes, rosettes, souvenir newspapers, etc.	1139	A glass Chandelier with Acanthus leaf decoration to framework.
1116	Two Boxing match Tickets: 1963 Cassius Clay vs Henry Cooper and 1959 Brian London vs Henry Cooper.	1140	A three tier glass Chandelier.
1117	A quantity of various pens including Parker, Sheaffer etc.	1141	A split mirror Drum-Sextant by Freiburger Prazisionsmechanik, serial No 950226 in a wooden case and a copy of 'Norrie's Nautical Tables'.
1118	An antique French wall Clock with pendulum and key, 50" tall.	1142	A leather covered hunting Hip Flask and wire cutter holder for saddle attachment and a leather covered Collar Box with collars.
1119	A German style Cuckoo clock with weights (Cuckoo as found).	1143	A vintage linen and lace Bedspread and a quantity of black dyed Ostrich feathers.
1120	A vintage 'Richards Shops' ladies green suede Jacket having contrasting top stitching and green hammered effect buttons, concealed front pockets, lined, (size small).	1144	A quantity of miscellaneous to include: onyx and marble chess pieces, a puppet, opera glasses, Howard Pewter sucrier and milk jug, a pair of brass lamp bases, an Epns cocktail shaker, boat building plans, etc.
1121	A quantity of vintage glass light shades.	1145	A quantity of miscellaneous to include: Treen, fish mould, Xylophone, etc.
1122	A framed Map of the County of Monmouth, 35 1/4" x 31" including frame.	1146	Two carved horn Snuff boxes.
1123	A framed Print of Saxton & Kip map of Merioneth 1637, 19 3/4" x 17 1/2" overall.	1147	A quantity of miscellaneous to include: lacquered box, an inlaid jewellery box, small vintage hall mirror, a copper and brass hunting horn, a plated teapot and metal money box.
1124	A pair of large French cast spelter figures of women with cherubs, after Auguste Moreau, standing on wooden plinths, (as found) 24" tall.	1148	A large Rosewood domed top jewellery Box with brass stringing and inlaid detail, 15" wide x 5 1/2" x 9 1/2", with two keys.
1125	A leather bound Welsh Bible published by Jones & Jones.		
1126	A small quantity of ebony dressing table items with silver applied plaques, mostly assayed mark London, (mirror as found).		
1127	A 19th century miniature candle reflector in the form of a tilt top table standing on three ball feet.		
1128	A small quantity of Religious miscellaneous to include: a Welsh Bible dated 1884, Rosaries, 'Our Lady of Grace' figure, etc.		

1149	A wooden framed Clock (running at time of lotting), a mirror with floral decoration and a darkwood jewellery box with key.	1167	A small quantity of miscellaneous to include: fob watch parts (marked made in Canada, gold filled), brass mantle clock (as found), chain mail pacha part of a buckle, a bangle, a book, etc.
1150	A glazed wall Display Cabinet, 26 1/2" wide x 7" deep x 28 1/2" high.		
1151	A box of Royalty souvenir programmes, magazines, books etc. to include: George VI, Elizabeth II Coronations.	1168	An Eastern European Accordion in case.
		1169	A "Driza-Bone" Australian made leather Hat, size large, in a tan colour.
1152	A large quantity of interesting sport related cigarette cards including 'Speedway Riders', John Players cricketers, Wills, Gallaher, etc.	1170	An Avery weighing scales with a tin of weights.
		1171	A Barograph by John Parkes & Son of Liverpool, 13 3/4" x 6 1/4" x 8".
1153	An Oak engineers Tool Box with fitted drawers and two keys, 16 1/2" wide approx.	1172	A South-East Asian carved Bust of a figure with elaborate head-dress, 9 3/4" tall and a polished carved Bust of a female with elaborate head-dress, 11" tall.
1154	A bank of four Oak vintage filing drawers, 15" x 19 1/2" x 11 3/8" approx.		
1155	An early 20th century Mahogany tambour topped vertical Filing Cabinet, 16 1/2" x 29 1/2" x 24 3/8" approx.	1173	A carved Balinese figure of a maiden sitting on a rock, "Klungkung Bali", 11" tall.
		1175	A good quantity of miscellaneous to include crocodile skin handbag, carved stone goat, canon on stand, Rabone tape measure, pipe, tea cosy, etc.
1156	An Art and Crafts Oak letter Rack with copper plaque, 11 1/8" wide, along with a 19th century Rosewood post Box with two letter opening, 11 5/8" x 5 1/8" x 4 3/8".	1176	A silver bladed Fruit Knife with mother of pearl handle, hallmarked for Sheffield 1906.
1157	A lightweight tweed Jacket, 'The Malvern', size 42.	1177	A small quantity of miscellaneous to include: bone counters, a trinket box containing minute coral beads, lithograph, souvenir crown, etc.
1158	A 'Lafleur' Cornet in a rigid case, imported by Boosey and Hawkes.		
1159	A B & M 'Champion' Trumpet, in a rigid case.	1178	A quantity of First Day Covers to include: pre-decimal plus Commemorative stamps from Antigua and Bermuda, etc.
1160	A quantity of miscellaneous to include: two 'Sunny Jim' cloth dolls, a trinket pot with a silver lid, Treen elephants, stained glass panel, etc.	1179	A quantity of cameras to include: Pentax, No 2 Brownie, Canon, etc.
1161	A leather bound book 'Marcus Aurelius', 1919 having gilt edges and embossed, initialled 'C.W.S' and dated 12th Jan, 1921 to front, 6" x 4".	1180	A pottery model of a young oriental boy and girl kissing, 18 3/4" tall, the base repaired and stamped 'reproduction reservee'.
		1181	Two small Oil Lamps, one with cranberry coloured glass reservoir, the other blue with floral decoration, both with chimneys.
1162	A novelty 'Gate' pipe holder and five smoking pipes (one being a Cob pipe), a Wills cigarette tin covered in leather with woven leather design to the lid and circumference, together with a cigarette case and an onyx lighter.	1182	A large framed and glazed Embroidery of kingfishers on water with bulrushes, lilies, etc (back loose), 22 1/2" x 24" including the frame.
1163	Seven pocket size Religious books including two Holy Bibles, Order for The Burial of The Deed, two Common Prayer, a New Testament and a Hymns A & M.	1183	A quantity of dance trophies/medallions, together with some plain trophies, etc.
		1184	A Brass based Table Lamp with cream shade.
1164	A box of miscellaneous to include: paperback 'Rape of Reason', silver bound (hallmarks rubber) green fleck twist vase, a large Orthoceras fossil, a pair of Metropax 8 x 26 cased binoculars, aircraft postcards, etc.	1185	A box of miscellaneous to include: a profusely embossed 19th century Lota, an acetylene bicycle light, a decorative swinging towel rail early 20th century, a brass pestle, a large shell, a model sports car, a novelty duck money box, a puzzle box with hidden contents, etc.
1165	A Chinese carved soapstone Vase, 7" high and an Oriental carved wood figure with ornate and carved sun candle holder, 14" high (as found).	1186	A pair of colourful mid century Cloisonne Vases, 6" tall.
1166	A Brass based Oil Lamp with cranberry coloured reservoir and upward facing shade with chimney, approx 23" tall.	1187	A vintage set of kitchen scales with complete set of brass weights, (1/2oz - 1lb).

1188	A box of miscellaneous to include: a vintage AA badge, glass photographic slides, badges, zodiac globes, binoculars, boxed drawing set, milk bottles, etc.	1206	A rare Medieval encaustic tile depicting a Bishops mitre and armorial crest, English, possibly Nottingham, 14th century, 4 3/4" x 5" x 15/16" thick.
1189	A large early-mid 20th century Cloisonne Vase.	1207	An Indian painted alabaster figure of a musician, seated playing the sitar, 19th century, 6 3/4" tall.
1191	Two reproduction Maps of Somerset and Herefordshire, 21 1/4" x 17 1/2" and 25 3/4" x 21 3/4".	1208	A fine Jain bronze figure of a tirthankara, in meditation seated on a pedestal base, 17th-18th century, probably Gujarat, 6" tall.
1192	A framed and glazed early 19th century Map of Herefordshire, circa 1830-40 showing the original Brecon and Hay horse drawn railway extension to Hereford.	1209	A very rare ancient Egyptian wood shabti, New Kingdom, extensive or original painted surface, 7" tall.
1193	A folder of maps taken from Victorian/Edwardian atlases.	1210	A large ancient Egyptian turquoise Faience Scarab, the base decorated with the Horus falcon and hieroglyphs; pierced for suspension, New Kingdom, circa 1000 BC, 1 1/4" x 1".
1194	A large quantity of First Day Covers, 1999 to 2003.	1211	A highly collectable ancient Egyptian pottery overseer Shabti, the figure wearing an apron to the front and carrying a whip, the seshet hair band painted in black, 3rd Intermediate, 500 BC. 4" tall.
1195	A small quantity of miscellaneous including "Legends of the sky" model of Concorde, polished stone bull ornament, Military WWII watchmakers tool case (incomplete) horse race game, horses, etc.	1212	A Phoenician glass face bead, possibly 5th century BC; provenance East Midlands collector, purchased at Dominic Winter some years ago, 1 3/4" x 1".
1196	A quantity of miscellanea including hip flask, horn corkscrew, Yard 'o' Led pencils, etc.	1213	Two mercury laboratory thermometers.
1197	A Hakuba aluminium camera Case, 48 cm x 34 cm x 18 cm with keys and contents to include: Panasonic PE-387 S, Jenazoom auto 220D and Wotan V250 W5 studio and Voigtlander VC 21B Flash guns, various lenses including Pentax, Yashica ST-7 mini tripods, filters of various sizes, a Shepherds DM 170 digital photo sensor, etc.	1214	A cased pair of Binoculars by Sir John Bennett, New Bond Street, London 8 x 26, and a vintage tennis racquet with press by Harriet's, Ltd of London.
1198	A Victorian Alabaster standish.	1215	A small quantity of miscellaneous to include: a pewter pill/snuff box, a spoon with twist handle, four Moroccan coffee spoons, carnival stone duck and an egg cosy.
1199	A school Bell, 10" tall.	1216	A Mahogany three tier metamorphic Cake stand/screen, 11" wide x 33 1/2" high.
1200	A metal smoker's stand, 32 1/2" long.	1217	A circa 1900 dark stained Mahogany framed piano/dressing Stool standing on tapering square legs and with bobbin details to the sides, the seat upholstered in figured shadow patterned green velvet type fabric, 15 3/4" x 12 3/4" x 21" wide.
1201	A 19th Century wrought iron pot stand, old green painted surface, 59" tall.	1218	A Mahogany Arts and Crafts drop leaf gateleg occasional Table having turned details and brief cabriole pad feet, 22" x 10 1/8" extending to an oval 30 3/4".
1202	A George III brass and wirework nursery fender, 37" wide x 7 1/4" high x 9 3/4" deep at ends.	1219	A single sized Welsh Wool Blanket in pink, green, yellow and cream, 63" x 88".
1203	A rare Franco-Flemish hunting wall hanging tapestry circa 1530, hunters and beaters in early 16th century attire pursuing deer in a wooded landscape (some fading and wear but generally in very good condition for a tapestry of this early date), 8' 11 1/4" x 5' 6 1/4" wide.	1220	A single sized Welsh Wool Blanket in blue, black and cream (some small patches of wear), 63" x 83".
1204	A rare needlework picture of the Virgin and Child 15th century and probably an English work (some damage and loss to the lower sections) framed and glazed, 9 3/4" wide x 19 7/8" tall including frame.		
1205	A rare Medieval encaustic Tile depicting a bear on his hind legs and juggling, 5 3/8" square x 1 1/8" thick.		

1221	A Tynwald Mills 'Moore's all Wool' Manx travelling Rug in brown, green and cream plaid, 73" x 59".	1238	A Stirling silver Canadian red enamel maple leaf badge, a Knight of St Luke enamel badge and an Alpine ski badge , plus one other.
1222	A Meade ETX 125 Maksutov-Cassegrain manual Catadioptric Telescope with a Meade Series 3000 Plössl 40mm multi coated Eyepiece, a Meade Super Plössl 26mm LP multi coated Eyepiece and fitted ABS Case.	1239	A vintage Weathermaster teak ships wheel barometer, a Chinese jewellery box mounted in brass 10" long, a 6" long box with heart shaped carving and a velvet covered trinket corner shelf, 11" long.
1223	An Orion 7½" Reflector Telescope with Vixen Great Polaris Motorised Equatorial Mount (no cables/control pad present) with a Plössl 6 mm Eyepiece, a Plössl 12 mm multi coated Eyepiece, a K. 25 mm Eyepiece, Moon and Mylar Filters, Camera Adaptor Tube, Vixen VX-1 Astro Camera Body and Fitted accessory Case, battery holder and Motorised Camera Mount.	1240	A 1922 edition The Works of Virgil, a 1912 edition of Wessex by Clive Holland and a 1946 of Aids to Anatomy.
1224	An oval mixed woods Swing Mirror standing on swept feet, 23 1/2" wide x 22 1/2" high.	1241	A 20th century walking stick with silver engraved collar and part of hand terminal hallmarked London 1919 maker Joseph Minden with original brass ferrule, 36" long.
1225	A vintage Jane Shilton navy blue "genuine leather" Handbag.	1242	A quantity of miscellaneous items to include: a horn shoe horn, a horn napkin ring, a metal jewellery casket, a hand held mirror and a vintage brown telephone with press button dial.
1227	A pair of Japanese wall hanging Panels in faux rosewood frames, one stamped "rooster", the other "ox", both 14" x 8".	1243	A 19th century Palmer & Co., London Brass nautical gimballed Candlestick with spring candle-feed mechanism, 10" tall.
1228	An early 20th century mixed woods Box with scroll carving in relief highlighted in ebony, 6" long, a burr Walnut Swiss made trinket box, 5" long, plus one other with images of trees to lid.	1244	A contemporary Bankers Lamp.
1229	A Treen mixed woods table skittles complete with six skittles.	1245	A small quantity of miniature ornaments to include: Cloisonne teapot and vase, bargeware style teapots, chamber oil lamp, Coalport "Indian Tree" trio, thimbles, pill boxes, etc. and a small quantity of modern postcards.
1230	A colourful Russian bowl 7" diameter and a similar spoon plus a black lacquered hexagon box with lid painted flowers, 3" diameter.	1246	An art nouveau style Copper Jardiniere with crimped rim, 8" diameter x 6" tall.
1231	A rustic treen early 20th century four section box with sliding lids.	1247	An elegant French ebonised and Boulle type Mantle Clock having a gilded face with inset white porcelain Roman hour numerals, the case with ormolu scroll mounts and feet, the two train Marti et Cie movement striking on a gong, pendulum and winder present, ran briefly during lotting, 12" high x 6 1/4" wide x 4 1/2" deep approx. ***
1232	A 19th century mahogany swing toilet mirror with scroll supports standing on Serpentine shape base on mulled feet 20" wide x 21 1/2" tall.		
1233	A 20th century swing fire guard with perhaps an earlier tapestry panel, 31" upright.	1248	An Ormolu, brass and other metals table centrepiece in the form of a well-portrayed Gondola decorated around its gun-whales with trailing floral garlands and with a young male Gondolier at the stern. The hull is raised on an oval plinth standing on four feet, two being webbed water-birds' feet, one a scroll in the style of a wave, the other with the face of the Old Man of the Sea, the supporting stem being in the form of a Sea-Horse amidst breaking waves. 24" long x 13" high. ***
1234	A 19th century tapestry depicting religious figure Jacob beside the well in decorative gilt glazed frame (framed damaged) 28" x 24".		
1235	A large world globe by Greaves and Thomas London, 12" diameter x 24" tall, standing on an ebonised turned wood base (lower brass washer stamped).		
1236	A late 19th century two section brass Art Nouveau stamp box with pierced sunflower lid, 3 1/3" long, plus a cast metal lady carrying her child.	1249	A terracotta model of a Temple dragon dog, 18 1/2" tall x 15" long.
1237	Three pairs of gentlemen's enamelled cufflinks with military insignia.	1250	A terracotta Jardiniere in the form of a Temple dragon dog, 39 1/2" high x 24" long overall.

1251	Two cast iron G.W.R Signs, one declared James Milne, March 1922, 14 1/4" x 12 1/2", the other 29 1/2" x 10 3/4".	1284	A quantity of die cast vehicles to include: 'Basil Brushes car, Corgi, Comics, Corgi Chitty Chitty Bang Bang, James Bond Aston Martin DB5, Dinky 'Spitfire MKII, and a Berliet Gazelle, etc.
1252	A 19th c. Rosewood and other woods octagonal occasional table, the top with light and darkwood beading and stringing and marked 'Jerusalem' to the centre. Raised on a twist pillar with a platform base on turned feet, 20 13/16" diameter x 28 7/8" high.	1285	A suitcase containing an Action Man 'Armoured Car', plus a case containing a quantity of Action Man accessories, etc.
1253	A Mahogany/Satinwood swing mirror, the 'D' shaped base with a hinged lidded trinket/glove compartment. The arched framed mirror supported on mirrored twist columns, 26 1/2" wide x 10 1/4" deep x 26 3/4" high.	1286	A tray of boxed Die cast cars and trucks, mostly Corgi to include: lorries, VW Beetle, etc.
1254	An impressive pair of contemporary Blackamoor figures each holding aloft a six branch candelabrum and standing on a rocky base itself raised on a serpentine detail base with gold finished scroll details, 78 1/2" high approximately.	1287	An Action Man tank and Jeep (as found).
1271	A shoebox of Coins and banknotes from the 19th century onwards to include: Maria Theresa 1780 silver Dollar, QEII 1998 £5, 1977 Gibraltar crowns, GB copper coins, etc.	1288	A quantity of 1970's and 1980's Aero Modeler magazines and a quantity of 2007/2008 Aviation Modeller International magazines.
1272	Five Crowns to include 1953 Coronation with ribbon, Queen Mother, etc	1289	An antique straw filled clown with painted face for restoration/ repair, 21" tall.
1273	A quantity of mainly British coins to include: 1977 crown, shillings, pennies, etc.	1290	A German Porzellanfabrik Burggrub antique bisque head female doll with closing eyes, marked to neck along with a later German boy doll with stamp to back of neck, both 21" tall.
1274	A '100th Anniversary of the Battle of the Somme' commemorative gold Double crown coin, in 9ct gold with 24ct gold plating, with case and certificate, 4 gms.	1291	Three Steiff for Danbury Mint Beatrix Potter toys to include: Peter Rabbit, Mrs Tiggy-winkle and Pigling Bland.
1275	A quantity of half Crowns dated from 1946-66.	1292	A boxed Coronation Coach by Lesney, (one horse a/f).
1276	A quantity of Threepenny pieces.	1293	A cast iron American Eagle plaque, 18 1/2" wide and a WWII 'Brodie' Helmet.
1277	A quantity of sixpence pieces.	1294	A WWII German 'Deutscher Volkssturm Wehrmacht' arm band, a WWI US Navy Victory medal, a pair of British Military dog tags 'Bowcott', WWII Defence medal, a WWII 'Light Aiming Post M14', Schaeffer pens, silver dancing medal, etc
1278	A boxed set of 'British Isles and Commonwealth Diamond Jubilee" Silver Proof coin collection of six Crowns for Alderney, Australia, Gibraltar, etc.	1295	***COLLECTION ONLY***A Mark 1 1907 British Bayonet together with a leather cased knife. ***ALL WEAPONS MUST BE COLLECTED IN PERSON - NO POSTAGE. Proof of age will be required on collection which should be by prior arrangement.
1279	Four bottles of alcohol to include: a vintage bottle of G.H. Mumm & Co 'Cordon Rouge' Brut Champagne, Fonseca Port, Pellegrino Marsala and Blandy's Madeira wine.	1296	Three fishing rods to include: a split cane fishing rod 'Made for W.H. Tisdall Ltd. Christchurch' with badge 'Hardy's Reg'd", Universal reel holder with wooden handle plus a Hardy's rod and another.
1280	Six bottles of alcohol to include: 'Oudinot' Rose Champagne, Lyme Bay Devon mulled wine, Prosecco, etc.	1297	A Falcon Redditch 'The Monarch' split cane fishing rod and a Shakespeare Firebird 1804-360 (12" long) in red fibreglass fishing rod.
1281	Six bottles of alcohol to include: 'Moscatel de Valencia' dessert wine, Cava, mulled wine, Sauvignon Blanc.	1298	A pair of black leather Riding Boots with Peal & Co Ltd. stretchers, size 6 approx.
1282	A Gebruder Fewo German (US Zone) clockwork scooter riding Teddy.	1299	A boxed Parker-Hale 12 gauge Cleaning outfit for smooth bore guns and a Webley Gun Cleaning Kit.
1283	A quantity of toys to include: two chess sets, cabbage patch doll, Yogi bear money box cigarette cards, etc.		

1300	A border patterned and fringed thick pile Turkish Milas Rug having two aqua coloured hexagonal guls to centre panel on a gold ground with terracotta and navy stylised pattern, 80" x 47".	1358	A quantity of Mason 'Mandalay' and 'Brown Velvet' china, to include: ewer, plates, dishes, etc. (some chips).
1301	A Royal Jaipur pure wool carpet in soft autumn colours, 72" x 48".	1359	A Lladro ornament of a pair of swans.
1302	A floral Crewel work vintage Rug, 60" x 36".	1360	A Roslyn China 'Wayside' coffee service.
1303	A Persian Baluch rug in reds and beige, 58" x 30 1/2".	1361	A quantity of commemorative Mugs to include: Queen Victoria Silver Jubilee, etc.
1304	A Kelim runner in geometric pattern, red and navy, 106" long x 23 1/4" wide.	1362	A vintage part dinner service in dark amber and blue floral pattern on a white ground (some crazing and discolouration).
1305	A small rug in dark red hues and geometric patterns, 39" x 24 1/2".	1363	A Gaudy Welsh Teaset consisting of seven cups and saucers, two cake plates, milk jug, sucrier and teapot, some a/f.
1306	A small prayer rug in dark red, beige and black, 40" x 28".	1364	A graduated set of three copper lustre Jugs.
1307	A large bordered, patterned and fringed Rug, the ground in shades of green, profusely and beautifully illustrating Lotus and other blooms, 10/4" x 8' approx.	1365	A quantity of copper lustre jugs, goblets, bowls including two with pink marbled interiors.
1308	A crewel work rug, 36" x 57".	1366	A quantity of china to include Royal Worcester 'Evesham', Paragon, Villeroy & Boch etc.
1309	A Belgium made hearth rug, border patterned and fringes in reds, cream, blue, green, etc, 35 1/2" x 69" long approximately.	1367	A small porcelain framed wall mirror with putti and floral decoration, 12" x 7 1/2".
1310	A woollen saddlebag with fringing and tassels, dark earthy tones in geometric pattern, 35" x 16".	1368	A large Copeland wash bowl for Soane and Smith, Oxford Street.
1311	A large woollen saddlebag with fringing, tassels and beads in rich earthy tones, 38" x 20" together with a prayer rug, 44" x 27".	1369	A large Studio Pottery lozenge shaped vase, (very unsteady), 16" tall.
1312	A large single saddlebag in terracotta colours, 19" x 21".	1370	A quantity of china to include: Royal souvenir, Gaudy Welsh mugs, Wedgwood 'Peter Rabbit' egg cup and stand, a small Lambeth style pot, pastille burner, etc.
<u>PORCELAIN & CHINA</u>		1371	A quantity of miscellaneous china to include: Royal Doulton, Oriental, Aynsley: cups, saucers, display and cake plates, (some as found).
1351	A part Susie Cooper dinner/teaware to include: seven teacups and nine saucers, plates, etc.	1372	A quantity of china to include part dessert service, Wedgwood 'Moss Rose' meat plate, Christmas display plates, Hill Pottery tureen, etc.
1352	Five Taylor Tunnicliffe place name holders, marked and numbered to the base of the stands and having gilt edges, together with a porcelain menu stand of bamboo style, numbered to the base.	1373	A small Shelley Art Deco 'New Fruit' border vase, 4 1/2" tall.
1353	A box of crested ware to include: Goss, Carlton, etc.	1374	Three Staffordshire flatback figures to include: Highland couple with a dog on a cushion on their shoulders; a Courting couple above a stream with a swan; and a Shepherd.
1354	A quantity of miscellaneous china to include: Burleighware blue and white Willow pattern oversized cup and saucer, Wedgwood vase and trinket dishes, two Szeiler figures (dog and bear), etc. together with wine glasses and a small Horseshoe barometer.	1375	Two old, possibly New Hall, porcelain tea bowls with saucers, and a feeding jug (some chips)
1355	A Staffordshire figure 'Dundas', 15" tall.	1376	A quantity of Royal Worcester 'Evesham' and 'Astley' tea and dinner ware, (some seconds).
1356	A quantity of Masons Chartreuse china to include: a soup tureen, a coffee pot, plates, cups saucers, etc.	1377	A quantity of china to include: comport, sauce tureen, Coalport 'Indian Tree' slop bowl, floral dessert plates and cream jug.
1357	A Coopercraft ram, ewe and three lambs.	1378	A child's part Coronation tea set for George V and Mary, plus a 1902 Coronation mug (some cracks).
		1379	A quantity of old china to include: Royal Albert trios, Royal Worcester saucers, etc.

1380	A glazed and decorated Continental terracotta plate with floral central panel and spot and dash border with graduated stripe pattern (with some wear and chips) 9 1/2" diameter.	1399	A pair of decorative Victorian Staffordshire vases in fauna and flora pattern, highlighted in gilt, 13" tall.
1381	A Bernard Rooke Studio Pottery Lamp, circa 1960's.	1400	A Chinese blue and white prunus ginger jar, 4" tall (mark to base) , plus a blue and white bulbous bottle vase painted with a lotus flower, 7" tall.
1382	A 19th century pearlware Jug, 5 1/2" tall.		
1383	Six Copenhagen ceramic birds, Wade Disney animals and a small fish.	1401	An early Wedgwood dark blue Jasperware jar, 6" diameter x 5" tall, and a dark green Jasperware trinket dish.
1384	Two pottery Scottish Highland figures, a bull and a ram.	1402	An Old Tupton Ware long neck bottle vase pipe lined in the blue floriant taste, 8" tall, plus an Ewenny two tone vase, 6" long.
1385	A cream ground pottery Vase with all-over blue floral motif and geometric foliage pattern, 13 3/4" high, (A note with the vase states that this vase is from Al-Foustat Ceramics Centre, Cairo and had been given as a present by The Prince of Wales, 2016, this has not been verified and cannot be guaranteed.)	1403	A pair of late 18th century or early 19th century porcelain models of reclining sheep on partially gilt bases and bocage, gold anchor marks to reverse, 4" long.
1386	Five pieces of blue and white china to include: two Nuneham Courtney Wild Rose plates, a Newtown Pottery Longton Staffordshire plate, a Jenny Lind bowl, a Masons patent Ironstone china bowl.	1404	A vintage Coalport boat shaped pierced basket with gilt decoration, 8" long, retailed by Phillips, Oxford St, London (mark for 1880-1920).
1387	A quantity of crested ware miniature tea set, a bathing hut, a wheelbarrow, Manchester, Oxford, Matlock, Bath, etc.	1405	A Goebel Hummel boy figure 'Lost my Stocking' and a girl figure 'Joyful Adventure' both 5" tall.
1388	A quantity of crested ware to include: shoes, a swan, warming pan, etc.: Arms of King Edward VIII Southampton: Goss, Jemma, Carlton, etc.	1406	A Border Fine Arts West Highland terrier, 4" long.
1389	A quantity of crested china to include: cups and saucers, a swan, a jug: Goss, Union, etc.	1407	A small Royal Worcester 1930's, signed Kitty Blake, (hairline crack) with hallmarked silver top, 4" tall.
1390	A quantity of Royal Worcester 'Evesham Vale' dinner ware.	1408	A Continental figure of a Girl with a coffee grinder, 6 3/4" tall.
1391	A quantity of china to include: nursery china, a Wade jug and figures, Sylvac vase, display plates, etc.	1409	A quantity of Spode 'Persia' dinner and coffee ware (some wear to rims).
1392	A small quantity of Wade whimsies, a small Goebel figure and plate.	1410	A good quantity of Mitterteich (Germany) dinner and teaware with 'Forget me Not' pattern.
1393	A Border Fine Arts 'Suffolk Ewe and Lamb' figure, stamped Ray Ayres BFA Scotland, 1990, on plinth.	1411	A quantity of Mudlen End Studio Pottery houses, plus some unmarked to include: a Church, a round house, timbered houses, etc.
1394	A quantity of Arabic (Finland) Ruska part Dinner service designed by "Ulla Procopé".	1412	Five display plates and a Leonardo 'The Tea Break' ornament.
1395	A Shelley breakfast set for two.	1413	A quantity of Kitchenalia stoneware to include: Moira Stoneware Bread Board, Flour and Sugar storage containers (one lid as found), etc.
1396	A quantity of part tea sets to include: Longport, floral, gold with Indian Tree, etc.	1414	A quantity of 'Pearsons of Chesterfield' Pottery Kitchenalia to include: a cheese dome, kitchen utensils pot, flour dredgers, pork dripping etc.
1397	A quantity of china to include: Wedgwood, Royal Doulton, Wade, Maling, etc.: jugs, vases, dishes, Oriental teapot, bowl and plate, Gurgle jug, etc.	1415	Three rosebud pattern part sets to include: Jackson & Gosling Grosvenor China, Royal Stafford, etc.
1398	A small quantity of china to include: Emma Bridgewater Royal Air Force Centenary mug, Mason's jar, pin dolls, Crabtree & Evelyn mugs, etc.	1416	A quantity of Bristol 'Pink Roses' part dinnerware (crazed).

1417	A quantity of Duchess pink rosebud pattern china to include: dinner plates, cups, side plates, etc.	1433	A continental porcelain figural comport centrepiece of a bowl on a plinth supported by three young girls, 9 1/2" tall x 7 1/2" diameter.
1418	A quantity of pink rose pattern china to include: Pall Mall ware teapot, Roslyn china jug, tureen, etc.	1434	A quantity of Continental cherub figures to include: a pair of cupid figures, floral encrusted candlestick, Russ Bernie & Co 'Dreamangels' etc.
1419	A part tableware set of W.H. Grindley & Co. Ltd. 'Scenes after Constable', Royal Tudor charger, four Churchill 'Willow' oval plates, etc.	1435	A box of Oriental china to include: a grey porcelain dragon figure clutching a blue ball, a small Hotei Buddha with five children, a Laughing Buddha, famille Rose ginger jar with painted scenes of men on horseback, etc.
1420	A quantity of Pink Rose pattern tableware to include: cruet sets, butter dish (as found) Salisbury cup and saucer, napkin rings, etc.	1436	A box of Oriental ginger jars to include: two pairs of black with pink flowers and green foliage jars, plus others Made in China.
1421	A quantity of china to include: cabinet cups, Limoges trinket plates, coffee cans, etc.	1437	A large Satsuma Vase decorated with Japanese figures, with landscape scenes in terracotta and cream colours, signed to base, 18" tall, with ceramic ring handles with swag cord and tassels either side (as found/repaired).
1422	A quantity of trinket pots to include: Coalport, Limoges 'Cottage Rose' animal trinket pots, etc.	1438	A Paragon 'English Rose' coffee set for six.
1423	A quantity of Pink Floral china to include: Royal Albert 'Old English Rose' trinket dish, Capodimonte candlesticks, a pair of Leonardo candlesticks, jugs, etc.	1439	A Royal Albert 'Old Country Roses' coffee set for eight (one cup cracked).
1424	A quantity of floral china to include: William Adam & Sons tureen, Royal Albert cake plate, Haviland & Co Limoges dish, etc.	1440	A large quantity of Royal Albert 'Old Country Roses' dinnerware to include: dinner plates, tureen, gravy boats, meat plates, etc. (one soup dish a/f)
1425	A quantity of animal ornaments to include: a large crackle glaze chicken, Border Fine Arts yellow Labrador, etc.	1441	A quantity of Royal Albert 'Old Country Roses' teaware to include: a teapot, milk jugs, bowls, tea plates, etc.
1426	Three Franklin Mint unicorn ornaments by David Cornell to include: 'Guardian of the Heart', 'The Spirit of Romance' and 'The Messenger of Love' (one leg a/f).	1442	A quantity of Royal Albert 'Old Country Roses' tableware to include: avocado dishes, trinket dishes, cake plates, a large jug, etc.
1427	A quantity of china to include: Lurpak toast rack, F&M Crown Devon mustard pot, Royal Minton 'Golden Age' jug and sugar bowl on stand, Crown Staffordshire sugar sifter, etc.	1443	A Coalport six person 'Revelry' pattern teaset to include: cups, saucers, tea plates, milk jug, sugar bowl and cake plate.
1428	A small quantity of blanc-de-chine cherub figures mostly holding musical instruments to include: a Italian group of three cherubs on a stand, candlesticks holder, etc.	1444	A Royal Doulton 'Cambridge' six person part Dinner service to include: dinner, side and tea plates, two lidded tureens, gravy jug and saucer.
1429	A small quantity of Victorian German Bisque busts, etc.	1445	A pair of large Staffordshire mantle Spaniels with gilt collars.
1430	A Capo-di-monte group of figure of scantily clad puttoes on a donkey by B. Merli, along with two small Capodimonte figures.	1446	A quantity of china to include: marbled pottery bowl, Dartmouth swan, Keith Harris 'Orville' money box, Sylvac pixie jardiniere, etc.
1431	A Continental porcelain cherub group 16" tall (as found), together with a Continental centrepiece comprising of floral encrusted openwork bowl held up by three cherubs, 14" wide x 10" tall.	1447	A quantity of china to include: Derby vase, Spode Italian coffee pot, W.H. Goss Hereford vase, Art Deco jug with snake handle moulded pewter lidded jug with mask handle, etc.
1432	Four Continental china figures to include: a mother and child, a gentleman in period dress seated on a chair (repaired), etc.		

1448	A quantity of cabinet cups and saucers etc. to include: an antique pink lustre and blue hand painted cup and saucer, Paragon cup and saucer, four Grosvenor cups and saucers, Royal Crown Derby 'Derby Posies' tea strainer and sugar, Wedgwood 'Cornucopia' trinket pot, etc.	1464	A quantity of figures including Capo-di-monte style, Herend, etc.
1449	A pair of 18th/19th Century hand painted plates, German with an eight spoke wheel mark (gilt) and an impressed 86 mark. Beautifully painted with coastal landscapes 9 1/2" inches diameter.	1465	A quantity of porcelain figures.
1450	A pair of continental bisque Mantle figures of children dancing and feeding a puppy, 6 1/4" tall.	1466	A quantity of porcelain figures.
1451	A fine Delft Buckle Dish circa 1700, typically of fluted form painted in blue with a stylised floral design, (generally in very good condition with a few frits), 13 7/8" diameter.	1467	A quantity of rococo style figures, etc.
1452	A Royal Worcester cup and saucer finely painted with panels of butterflies against a pale blue ground enhanced with raised gilding, c. 1880.	1470	A fine Meissen porcelain ecuelle, Marcolini period, circa 1780, painted with floral reserves against a rose pink ground, with floral finial and naturalistic branch handles, 4 3/4" high.
1453	A very scarce and fine early 19th century Ridgeways stoneware mug sprigged in relief with the "Cherubs and griffin", 3" tall x 3 1/4" diameter.	1471	An Umbrella stand with blue floral pattern on white ground, 17 1/4" tall.
1454	A very scarce and fine early 19th century Ridgeways stoneware jug sprigged in relief with the "cherubs and griffin" pattern. John and Job Ridgway produced this relief style pattern at their Cauldon factories from about 1808, 5 1/4" tall.	1472	A quantity of part teaset to include: Queen Anne, Colcough, etc.
1455	A miniature Royal Doulton Tyg in pink enamel with raised gilt floral decoration, 1 1/4" tall (small amount of paint loss by handle) and a miniature porcelain cup and saucer in lilac with reserves of flowers, (faint crossed lines, crown and Teveria markings).	1473	A quantity of china to include: Royal Worcester egg coddlers, Royal Doulton oyster plate, dressing table set and jardiniere.
1456	A rare Staffordshire traveller's sample flat jug or jug Profile made by Maddock & Sons to sell their "Chintz" pattern early 20th century, 9 1/2" tall x 8 1/2" at widest point.	1474	A quantity of china ornaments to include: orchid posy, cruet, honey pot, etc.
1457	A Japanese porcelain figure of a Gent with a basket, 7 1/2" tall.	1475	Four Coalport ladies to include: two ladies of fashion 'Special Memories', 'Danni', 'May Ball' and 'Debutante Dawn'.
1458	A 'Hutschenreuther' figure of three Cherubs.	1476	A quantity of Limited Edition commemorative Plates, five depicting aircraft, one being a Spitfire and five depicting jet planes (all RAF).
1459	A pair of Dresden ladies with encrusted lace skirts.	1477	A porcelain cased mantle Clock (part of a garniture) 14" high, plus another Clock case in the form of a cottage with an elderly couple leaning over a gate, 12" high approx.
1460	A Royal Worcester "Mandarin" Candle Snuffer.	1478	A large Myott vase decorated in green and white flowers, 9 3/4" tall.
1461	A small Toby Jug.	1479	A Crown Staffordshire coffee service for six.
1462	A Royal Doulton model of 'Desert Orchid' on plinth, 10" tall.	1480	Six copper and silver Lustre Jugs including a graduated set, with dancing girls detail.
1463	A box of figures, some 19th century, including some pairs, etc.	1481	Seven copper lustre jugs to include: a graduated set of three with floral decoration.
		1482	A large 'Ewenny' mottled green vase, 30 1/2" high (chip to rim).
		1483	Six Royal Doulton 'Brambly Hedge' Plates - Spring, Summer, Autumn, Winter, Old Oak Palace and Crabapple Cottage.
		1484	An Imari bottle vase, 7" high, twelve blue and white Denmark porcelain plates/ saucers to include: four Empire blue and white design marked 'G & G' to base with central blue flower head, plus four saucers with same design, etc.
		1485	A Majolica wash jug & basin having blue and green glaze.
		1486	A Royal Crown Derby plate 1877-90, plus a Cauldon Ware plate 1890-95.
		1487	A quantity of china to include: Poole 'Springtime' tureen, Crownford Burslem 'Moorland' jug, Torquay ware cup and saucer, Kernewek pottery character jug, etc.

1488	A quantity of ceramics and pottery to include: Goebel stein, Quimper stand, Allison Dunn dish, Studio Pottery fish vase signed 'Mac', etc.	1509	A quantity of display plates of birds, town scenes, royal souvenir etc.
1489	A quantity of china including Belleek cups and jug, Wedgwood part dessert service, relish pot, floral encrusted vases etc some hairlines, wear and crazing.	1510	A quantity of china including Delft vase, Masons jug, empty Wade whisky bells, oriental china, lidded pot for Tiffany & Co., etc
1490	Two old teapots, studio pottery soup bowls, etc.	1511	A quantity of china including B & L Ltd 'Old Derby' pattern plates, Royal Albert 'Old Country Roses' cake plate etc.
1491	A family of Wade Nat west Bank money pigs, three with stoppers, (baby pig with foot repaired/cracked).	1512	A quantity of blue and white china to include: 'Old Willow', plus older pieces, a small Oriental tea bowl (white with a blue rim), etc. (many as found).
1492	A large diamond shaped blue and white tureen, and a large oval blue and white wash bowl.	1513	A large Portmeirion 'The Victorian Cooks Collection' jug, Thomas Germany lidded sugar bowl and milk jug, two Webb's stoppered cut glass bottles, etc.
1493	A quantity of blue and white Dragon pattern china, some by Coalport and eight dessert plates, white with pierced decorated rims, plus a nursery china cup.	1514	A small quantity of Crown Ducal (Gainsborough England) with floral central design and having raised border to include: six dishes, serving dish, four coupes, etc (some a/f)
1494	An Ashworth Bros 'Hanley' dinner service (some crazing, chips and cracks).	1515	A pretty flower Trough with birds perched around the edge, signed to the base Delphin Massier, 15 1/2" x 9 1/2" (one tail and some beaks chipped).
1495	A Royal Cauldon dinner service with cream ground and floral decoration in green, (some a/f).	1516	A quantity of plates, soup bowls etc. to include: Carlton ware, Spode, Booths, etc. (some stained and crazed).
1496	A Susie Cooper for Wedgwood 'Glen Mist' fine bone china tea set to include: four cups and saucers, four side plates, a milk and sugar, plus six soup coups with stands.	1517	Four Oriental plates, (two being for repair).
1497	A good quantity of Poole Pottery 'Two Tone' blue and grey teaware, etc.	1518	A Beswick cheese dish with floral finial and decoration in a pale green ground.
1498	A Continental porcelain gold lustre teaware decorated with Frangonard style romantic scenes to include: tea pot, milk and sugar, eight cups and saucers.	1519	A Crown Devon figure of a circa 1920's/30's dancer, 12 1/2" tall, (some crazing).
1499	A set of twelve bird plates by Limoges for Franklin Porcelain.	1520	A Moorcroft 'Pomegranate' vase on Tudric pewter base, 12" tall.
1500	A pair of Crown Devon vases 'Etna' design, 9 1/2" tall.	1521	A quantity of display and dinner plates to include: Pearlware 'Indian', Royal Doulton 'Desert Scenes', Royal Worcester 'Baden Powell', etc, (many badly crazed) plus three comports from a dessert service.
1501	Eight Royal Doulton plates to include: 'The Doctor'. 'The Parson', 'The Admiral', etc.	1522	Two Doulton Lambeth jugs, one with tavern and hunting scenes, the other plain (handle repaired).
1502	A Poole Pottery vase, 8 1/2" and a jug.	1523	A quantity of china to include: chamber pot, muffin dish and cover, a blue and white teapot, lidded serving dish, sauce tureen, etc.
1503	A Wade vase in 'Harvest' design, 8 1/2" tall.	1524	A small quantity of Oriental china to include: a Famille Rose vase, a cup and saucer and small vases.
1504	A Royal Doulton Winnie The Pooh 'I've Found Somebody Just Like Me'.	1525	A quantity of china to include: Coalport 'Harvey's Bristol Cream' bottle, sugar shakers, a Clarice Cliff teapot (no lid) and a milk jug, etc.
1505	Four Royal Doulton Winnie The Pooh figures, 'Pooh and the Present', 'Lights the Candle', 'Kanga and Roo', 'The Honey pot'.		
1506	A Royal Doulton Winnie The Pooh 'Going Sledging', boxed.		
1507	A quantity of Royal Worcester dinnerware including 'Evesham', 'Worcester Herbs' and 'Evesham Vale'.		
1508	Two part dinner services including Hornsea 'Saffron' and Johnson Bros 'Snowflake'.		

1526	Five figures to include: a German porcelain shepherdess with lamb, Royal Doulton 'Snowman', a bulldog, etc.	1553	A quantity of china to include: a pink floral tea for one, an Aynsley cup and saucer, 'Ye Olde Village Inn, 'Pedlar' character jug, Royal Vale 'Allied for Freedom' jug and bowl (both as found).
1527	A South African ceramic large shallow Dish with stylized figures, 16" diameter.		
1528	A Beswick mallard duck (crazed) 7" tall.	1554	A Portmeirion 'Cypher' part coffee service.
1529	A quantity of Wedgwood 'Chippendale' dinnerware to include: dinner, side tea plates and dessert dishes.	1555	A Royal Doulton wash bowl and chamber pot with floral sprays and green border (crazed and hairline cracks).
1530	A Wedgwood 'Chippendale' coffee service (no milk jug).	1556	A quantity of china ornaments etc. to include: Gaudy Welsh jug, Radfords vase. Oriental lidded vase (lid as found), Aynsley crested ware, etc.
1531	A Lladro ornament of a lady with a goose and a dog, 10 1/4" tall.		
1532	A pottery fish money box, four Royal Doulton Toby jugs and Falstaff ornament.	1557	A quantity of china to include: a Copeland vase (chips to base), shell shaped jardiniere, Mason's plates, etc.
1533	A Wellington bone china part tea set.		
1534	An English Delft blue and white bowl mid 18th Century.	1558	A quantity of part tea sets to include: Foley, Lion Brand, etc.
1535	A German porcelain Lithophane night light in a gilt metal casing.	1559	A Royal Worcester 'Evesham' casserole dish and five ramekins.
1536	A Midwinter part coffee service.	1560	A quantity of plates to include: a part dessert service, Gaudy Welsh and two Ridgeways porcelain WWI Remembrance wall plaques.
1537	A Midwinter part tea service.		
1538	A Studio Pottery coffee service.		
1539	A quantity of crested china hats.	1561	A Queen Anne china teaset with pink and grey rose pattern
1540	A quantity of crested match holder/strikers.		
1541	A quantity of slipware decorated pottery to include: bowls, small mugs, a jug, etc.		
1542	A good quantity of Midwinter china to include: dinner and tea ware.	1571	Five glass Decanters to include: one pair with etched design (one stopper missing), etc.
1543	A quantity of Rye Pottery Charles and Diana Commemorative plates and dishes.	1572	A quantity of glass to include: bonbon dish, jelly moulds, bud vase, Edinburgh crystal, etc. plus coloured glass dessert dishes.
1544	A Wedgwood 'Victorian Childhood' eleven plate set (with certificates).		
1545	Two Franklin Mint 'Siamese' plates (with certificates), together with four Royal Doulton 'Natures Own Beauties' plates (with certificates).	1573	A quantity of cut glass jugs, tankard, heavy vase, etc.
1546	Twelve Wedgwood 'Blue and White Collection' plates (with certificates).	1574	A quantity of glasses to include: champagne coups, tumblers, wine glasses, water carafe, etc.
1547	Twelve Wedgwood 'Great Racing Clippers' plates (with certificates).	1575	A quantity of blue glass Jugs and Vases, (some with rough pontils, bubbles and crackles, one piece repaired).
1548	Twelve Spode 'Willow Pattern' Series plates (with certificates).	1576	A quantity of blue and green glass to include: tumblers, wine glasses, bud vase, butter dishes, candlestick, etc (some with rough pontils, bubbles and crackles).
1549	A Royal Doulton 'Tumbling Waters' figure, with certificate, 14" tall.		
1550	A large porcelain Lomonosov USSR Siberian Tiger and cub.	1577	A quantity of glass to include: green fruit set, Babycham glasses, decanters, sugar shaker, blue glass swan, etc.
1551	A quantity of Myott 'Chelsea Bird' dinnerware, to include: two lidded tureens, six dinner plates, six bowls, two gravy boats, etc.	1578	A Venetian blue and gilt fine glass Liqueur set to include 10" decanter with scenes of Venice in gilt and six matching glasses.
1552	A green Sylvac Yorkshire terrier and a Coopercraft Samoyed.	1579	A Selkirk fluted Paperweight, 3 1/2" tall and a globular colourful paperweight.

GLASS

1580	A fine Venetian small hand blown Vase with white lattice gilt and orange decoration, 3 1/2" tall, plus a green Mdina wide rim squat Vase with drizzle decoration, 3 1/2" tall.	1604	A set of six coloured and etched hock Glasses and two small jugs in blue and yellow (chipped).
1581	A pair of fine quality clear glass Candlesticks with slice and strawberry cut and star bases.	1605	A set of seven lemonade Glasses with gilt decoration and rims.
1582	A quantity of glass to include: a set of six goblets and claret jug with plated top, a small Peter Tysoe perfume, miscellaneous glasses, etc.	1606	A glass fish and two glass cats.
1583	A quantity of drinking glass sets to include: a set of eight wine glasses with gold spiral stems, a set of four etched glasses and similar decanter, etc.	1607	A Waterford crystal vase, 7" tall.
1584	A quantity of glass to include: cut glass claret jug, bowls, vases, trinket pots, etc.	1608	A large glass Vase in multicoloured stylised strap-leaf design, 14" tall.
1585	A Bristol blue tall blown glass jug (crack near handle), 14 1/2" tall.	1609	Six Carnival glass dishes to include: a pair, two oval shaped, etc.
1586	A heavy Mdina 'Tiger' vase in globular form, signed to base.	1610	Seven Carnival glass dishes.
1587	An iridescent blue 'Jack in the Pulpit' vase by Alum Bay, together with a heavy pink and clear glass lobed vase.	1611	Four glass Decanters.
1588	A pair of ribbed posy vases with silver collars, cut glass sugar sifter with silver lid, a pair of cut glass salts, etc.	1612	Four Lalique 'Les Enfants' shot glasses.
1589	A quantity of coloured glass to include: blue glass vases, hand painted milk glass vase, glass clown (as found) etc.	1613	A vintage amethyst glass Vase with silver overlay, 5" tall.
1590	A quantity of glass to include: Waterford crystal vase, dressing table set, carafe, etc.	1614	Two glass Decanters and a Claret Jug with hobnail cut and plated lid and handle.
1591	A highly collectible glass pate de verre 'Gazelles' Bowl by Gabriel Argy Rousseau (designed 1928) signed in the mould (a very faint stable hairline to the base), 4 3/4" diameter x 3 1/2" high.	1615	A silver collared tall cut glass Perfume Bottle.
1592	A very rare late 19th century enamelled glass Bowl by Emile Galle, decorated with a caterpillar among flowers; for Galle glass with closely related enamelled decoration, see Christie's 4 Oct 2005 lot 47, 3 3/4" diameter at rim x 4" high.	1616	A small quantity of glass to include: coloured beakers, etc.
1593	A Liberty's Tudric Pewter and Whitefriars glass Dish, designed by Archibald Knox pattern No. 0319, 5 3/8" diameter.	1617	A Studio Glass vase in vibrant yellow, red and blue, 11" tall.
1594	A Liberty's Tudric Pewter and Whitefriars glass Dish by Archibald Knox, 1905, pattern no. 0593, 3 1/2" diameter.	1618	Six boxed Duchess hand cut crystal small wine or port Glasses, 11.5 cm tall.
1601	Two air twist stemmed engraved Glasses, EIRR 1953 Jubilee.	1619	A quantity of green/blue/red Victorian sherry Glasses.
1602	Two pairs of green glass Lustres with droppers, (some droppers damaged and missing).	1620	A pair of heavy Art Glass tapered glass Vases in caramel tones with thick white linings and having applied random brown trails and polished concave bases, 12" and 14 1/4" tall.
1603	A quantity of wine and brandy glasses, custard cup, salts, decanter etc.	1621	A heavy vintage Murano style twisted glass Vase with wide wavy flared rim, in red with thick white interior, clear casing and scalloped clear base, 9 3/4" tall x 5" wide, along with a Dartington flared rim glass Vase in cranberry, having vertical ribs and a thick clear base, unsigned, 7" tall x 3 1/2" wide, plus a red glass goblet containing a ceramic cat.
		1622	A vintage Whitefriars hourglass shaped Vase in kingfisher blue with random strapping and polished round pontil (age-worn base), 7 1/4" tall x 3 1/4" wide.
		1623	A Martin Andrews contemporary glass perfume Bottle having inner 'teardrop' surrounded by merging tones of various colours and with a thick clear base, signed 'Mr Andrews 2019', 7" tall including the clear spiralled stopper.

1624	A vintage Czechoslovakian style thick glass Vase with multi-coloured vertical patches, pulled wavy rim, cased in clear crystal which is pulled to form several random outer nodules and having concave base with rough pontil, 14 1/2" tall x 4 1/2" wide at base, together with a Krosno labelled Sommerso glass Vase of attenuated bottle form in lime green and having a deep clear base with polished round pontil, 16" tall x 3" wide at base.	1643	A good quality Mahogany bookcase/display cabinet having multi adjustable shelves, the pair of opposing glazed doors of arch glazed pattern and raised on tapering square legs terminating in spade feet, 43 1/2" wide x 13 1/8" deep x 41 3/8" high.
1625	A heavy torpedo shaped Art Glass Vase on caramel tones with thick white lining, applied random brown trails and a polished concave base, 16" tall.	1644	A brown hide upholstered Ekornes Stressless reclining armchair and matching footstool.
1626	A Murano style Sommerso tapered Vase in cobalt blue with thick heavy casing, 10" tall x 3 1/4" wide, together with a heavy Murano Sommerso faceted bud Vase having applied dark trails which are reflected in the inner core of amethyst, purple and blue, 4 1/2" x 4" wide. (both glow green under UV light).	1645	A Chinoiserie detailed Oak bureau, the slope opening to reveal a patent stationery/pen rack with twelve paper/envelope wells, a pair of sloped lidded compartments and three upper drawers, the writing surface lined with suede, the base with two long drawers standing on turned and carved legs with perimeter stretchers, 29 5/8" wide x 19" deep x 41 1/2" high.
1627	A Murano oval glass Bowl in the manner of Alfredo Barbini, having multi-coloured canes randomly spaced and with silver inclusions all over the ruby red ground, 5 3/4" long x 4" wide x 2 3/4" tall.	1646	A Mahogany sideboard/cupboard standing on cabriole legs terminating in ball and claw feet, the pair of flame Mahogany panelled doors opening to reveal an interior with a central shelf and having a blind fretwork frieze over, 45" wide x 18" deep x 39" high.
1628	A pair of heavy Murano knot glass Sculptures in amber with clear barrel shaped bases, (glow green under a UV light), 16" tall x 5 1/2" wide.	1647	A 19th c. Mahogany circular occasional table standing on tapering turned pillar having a platform base raised on turned feet, 20 9/16" diameter x 26 3/4" high.
1629	A signed 'Michael Harris Isle of Wight' swirled pattern pedestal Paperweight in pink, purple, white and crimson, 2 1/4" tall x 2 1/2" wide.	1648	A 19th c. carved Rosewood circular piano stool having a turned and carved pillar and three play feet, the screw pillar adjustable for height, 19" minimum height up to 23 1/2" maximum approximately.
1630	A quantity of green and clear glass to include: lustres, vases, dishes, etc.	1649	An Ekornes Stressless swivelling and reclining armchair and footstool unusually being upholstered in black leather.
1631	A quantity of glass to include: brandy glasses, a decanter, Hyacinth vases, etc.	1650	A Mahogany rotating occasional table having a brass gallery and light and darkwood stringing to the top, the four supports also with light and darkwood stringing and standing on a turned pillar with three splay feet terminating in brass paw capped casters, 17 1/2" diameter x 26 3/4" high.

FURNITURE

1641	A G-Plan style dark Teak/hardwood show - frame beige upholstered lounge suite comprising a three seater settee, pair of armchairs and a footstool.		
1642	An Oak and Mahogany cased Longcase Clock having an arched brass face with Roman hours and Arabic minutes to the chapter ring, there are cast brass spandrels with cherubic faces whilst the silvered plaque to the arch engraved "Tempus Fugit" is flanked by scrolls and mirrored Dolphins, no maker's name is evident, the key and pendulum are present and the clock struck and ran normally during the week of lotting, 23" wide x 91 1/4" high x 10" deep approx.	1651	A Mahogany William IV design pull-out extending dining table standing on turned and lobed legs terminating in brass casters, 46" x 45 5/8" extending with the two leaves present to 74 1/2" x 28 1/2" high approximately. Would extend with another leaf to 87" approx.
		1652	A set of six heavy Rosewood framed dining chairs having serpentine fronts, drop- in seat pads/cushions and standing on turned and lobed/ fluted front legs. These chairs appear to be in very original condition.

1653	An early 20th c. square Oak revolving bookcase of large dimensions, 23 3/4" square x 45 5/8" high.	1666	A good quality 19th c. boxwood strung cross-banded Mahogany flap over Card Table of "D" shape standing on tapering square legs terminating in spade feet, 34 1/2" x 17 1/8" extending to 34 1/2" and 29 1/8" high.
1654	A 1960's James Bond movie style black leather upholstered easy Chair and matching Stool, both having flared circular polished metal bases.	1667	A light Oak rectangular Dining Table standing on chamfered square legs, 59 5/8" long x 31 5/8" wide and 30" high approx.
1655	A probably Edwardian Boxwood strung bow fronted chest of three long drawers having oval back plate brass handles and standing on bracket stye feet joined with a shaped apron, 35 5/8" wide x 18 3/8" deep x 32 7/8" high.	1668	A Walnut music storage cabinet having Tunbridge style banding and light and darkwood stringing, the glazed door opening to reveal an interior with shelves with leather edging labelled 'Songs', 'Sound' and 'General Music', 21" wide x 13 5/8" deep x 35 5/8" high.
1656	A robust set of five Edwardian Oak framed Dining Chairs having turned front legs united by "H" stretchers, the seats and back rests upholstered in dark green leather.	1669	An elegant Bergere type three piece lounge suite having carved backs and sides, standing on ball and claw feet, the arms terminating in nicely caved claws upholstered Wedgwood blue ground fabric with repeated floral/foilage motifs.
1657	An attractive drawing room or boudoir chair standing on cabriole front legs and button upholstered shadow foliage/floral patterned cream fabric.	1670	A good pair of Oak and other woods country ladder back side chairs standing on turned legs and stretchers, the seats woven with rush/seagrass.
1658	A 19th c. Mahogany dumb waiter/two tier side table standing on compact brass casters, 21 1/8" x 29 5/8" x 29 3/4" high.	1672	A contemporary cabinetmaker made Cherry wood cased Longcase Clock having a brass face with cast brass spandrels, the silvered chapter ring with Roman hour numerals and Arabic minute numerals and with midnight blue rolling phase indicator and date register to the arch. The weight driven, three train movement striking the hours and quarter hours (Westminster) on gongs, the clock ran and struck normally during the week of cataloguing, 19 3/8" wide x 12 1/2" deep x 81 1/4" high approx. The original (2005) receipt is present evidencing that £3,495 was paid for this timepiece. An instruction sheet is also present.
1659	A fine quality 6 1/4 octave boudoir Grand Piano by "R. Gors & Kallmann, Berlin", standing on tapering square legs with brass casters, 56 5/8" wide x 61 1/2" long x 38" high and sold complete with a twist side handle adjustable for height buttoned green leather piano stool. The stool on square legs, 25" x 17 1/4" and 18 1/2" up to 22 1/2" high approximately.		
1660	An Oak framed Arts and Crafts open armed elbow chair having pierced detail cross-splats and woven rush/seagrass seat (a/f).		
1661	A Mahogany Arts and Crafts open armed elbow chair having lightwood stringing with fretworked splats, the seat upholstered in cream chain link motif fabric.		
1662	A very stylish Scandinavian/Danish design open armed armchair with lattice/woven upholstery, the metal frame most effectively replicating wood.	1673	A set of four Edwardian Mahogany framed Dining Chairs having carved and fret-work details, turned and spirally reeded front legs and over-stuffed seats upholstered in green ground stylised leafy plant patterned fabric.
1663	A dark Oak carved open armed hallway armchair, the back panel depicting stylised foliage and flowers, the legs and arm supports turned and having a solid oak one piece seat, 26" wide x 17" deep x 45 1/2" high approximately.	1674	An unusual Ercol light Elm full height corner cabinet over cupboard having the customary oval twist action knobs/latches, 28" wide x 77" high.
1664	A peg-joined heavy Oak solid seated Spinning Chair and having a slender back rest, 15 1/4" diameter x 35 1/4" high.		
1665	A pair of cane seated and backed Satinwood framed tub chairs standing on cabriole front legs with shell carved knees.		

1675	An Ercol solid Elm seated armchair having a stickback with a central splat with fretworked Prince of Wales feathers, complete with four cushions upholstered in Sanderson type fabric in cream with countryside landscape scenes of fruiting and flowering trees, dogs, deer figures on horseback, hedge enclosed buildings, and a lady and gentleman in early dress /attire.	1684	A Mahogany side Chair having a fretworked back splat, standing on tapering square legs terminating in spade feet and having a nicely worked floral tapestry seat.
1676	A light Oak dog kennel recess base Welsh dresser, the base with four short drawers and a pair of opposing shaped raised and fielded panelled doors, standing on turned bun feet, the rack with a pair of opposing bevelled glazed doors and central shelves, 61 1/2" wide x 19 1/2" deep x 73" high	1685	A stylish cabinet-maker made caned seated Side Chair in light and dark-wood strung Mahogany with a decorative bell-like flower inlaid back splat and standing on turned and boxwood strung front legs.
1677	An Ercol light Elm extending dining table, standing on a turned pillar with four splay feet, 35 1/2" x 41 1/4" extending to 59" x 29" high.	1687	An Oak North Wales type enclosed base dresser having three frieze drawers and triple cupboard below, complete with plate rack, 57" wide x 18 5/8" deep 82 5/8" high approximately.
1678	A set of four Ercol light Elm seated stick back dining chairs, the central splats with fretworked swan detail and complete with cream and stylised floral foliage patterned pad cushions.	1688	An appealing Georgian Oak side table having a frieze drawer and standing on turned legs united by perimeter stretchers, 31 " wide x 20 3/8" deep x 27" high, the drawer having brass drop handles.
1679	A good light Oak kneehole desk having a central frieze drawer and pedestals each with four short drawers, the top with gold tooled green leather inset, 51" wide x 25" deep x 30" high and having brass back plate drop handles.	1689	An excellent quality extending circular Dining Table, in Rosewood, 54" diameter, extending with one leaf to 71 7/8" and standing on a substantial hexagonal central pillar, 30 5/8" high, purchased in Hong Kong circa 1990.
1680	An uncommonly compact Elm and other woods turned legged pot board cottage Welsh dresser having three frieze drawers and complete with the associated plate rack having a fretworked frieze, 38" wide x 16 1/8" deep x 64 3/8" high.	1690	An excellent quality set of eight Rosewood framed Dining Chairs including a pair of carver chairs, standing on square legs and each having a cream upholstered pad cushion, purchased in Hong Kong circa 1990.
1681	A dark stained mixed woods Chinoiserie design cupboard, the pair of opposing doors opening to reveal an interior with shelves, the lower one having a pair of frieze drawers and with a pair of deep drawers to the base with the legs united by a shaped frieze. The upper peg hinges require attention, 36 1/2" wide x 23 3/4" deep x 73 1/4" high.	1691	A pair of Mahogany framed Rexine seated Side Chairs standing on turned and fluted front legs.
1682	A dark stained Mahogany and other woods curved 'X' shaped stool having multi slatted sides, the seat upholstered in dark brown leather, 24 3/4" wide x 14 1/8" deep x 23" high.	1692	A good quality Stressless style swivel and reclining armchair with flap over top backrest cushion and upholstered in an unusual fern green/grey shade of leather.
1683	A pair of 19th century Walnut & other woods Lady's and Gentleman's Chairs standing on scroll front legs with brass castors, the frames with carved fruit and foliage details and upholstered in beige ground stylised shadow pattern floral and foliage fabric	1693	An unusual "Kerry Darlington" office circular reception seat, the seat upholstered in navy blue having a tapering cylindrical backrest upholstered in grey, a pillar supporting a canopy resembling a snow flake and standing on six tubular legs, 48" diameter x 77 1/2" high overall, with certificate of authenticity, "Tree of Life" - Platinum, limited edition no. 162/295.
		1694	A desirable and very stylish tinted plate glass circular dining table by Arkana, raised on a polished trumpet ended pillar and complete with the associated set of four Tulip chairs in cream with pad cushions and flared top cross-footed supports, the table, 47 1/8" diameter x 28 3/4" high.

Saturday 9th January 9:30am -
BOOKS, RECORDS ETC

2001	A small quantity of books to include The Night Circus, Elegy for a River, In Flanders fields by Leon Wolfe etc.	2020	A small quantity of books to include: History of The World, Montrose, The Queens Garland, etc.
2002	A quantity of Fishing/fly fishing related books including A fish will rise by D Macer Wright, catching Trout by T H Barnes etc.	2021	A small box of books to include: Timber-framed Housing, Furniture, Long-Distance Cruising, etc.
2003	A quantity of Observer books including show Jumping, Zoo Animals, Heraldry etc.	2022	Eight volumes of The Book of Knowledge.
2004	A Box of Books to include two volumes of History of Philosophy, Captain Bulldog Drummond, Life of Lorenzo DE Medici etc.	2023	A box of books to include: novels by Robert Gibbings, John Buchan, Chinese Cooking, Mossiman's World, etc.
2005	A quantity of books including Vol 1 Life of Gladstone, My married life with Ludendorff, Old again in the New World etc.	2024	Two boxes of books to include: Salisbury's Laws of England, Alice in Wonderland, et
2006	A quantity of gardening and cook books etc easy Italian cook book.	2025	A quantity of cook books, Angels, Bill Bryson, etc.
2007	A quantity of paperback novels, including Hillary Mantel. Phillipa Gregory, Winston Graham, etc.	2026	Twelve classic novels to include: Vanity Fair, Pride and Prejudice, etc. Published by Oldham Press
2008	A box of books to include Ladybird books, Five Little Peppers, Harry Potter Oscar Wilde etc.	2027	Two boxes of golf related books including, Henry Cotton My Swing, Dave Pelz's Putting Bible, etc.
2009	A quantity of Ladybird books including The Story of Captain Cook, The Locomotive The green umbrella etc.	2028	A box of miscellaneous books to include: Gardening, Cooking, novels, etc.
2010	"Frank Brangwyn and his Work" by Walter Shaw-Sparrow, printed by Ballantyne Hanson & Co.	2029	A box of coffee table books to include: Queen Mary's Dolls House, Laura Ashley's Home Decorating, The English Women's Garden, etc.
2011	A box of box to include: Shakespeare, Mr Midshipman, Hornblower, Britain and her neighbours etc.,	2030	Volumes 1,2,3,4.6 and 7 of The Great War by H.W. Wilson
2012	Four copies of Wainwright's Pictorial Guide to the Lakes and Fells.	2031	A small quantity of books to include: two volumes of Bunyan's Works, Shakespeare Comedies, etc.
2013	A quantity of books on Culture to include: Seven Pillows of Wisdom, Life among the Pirates, etc. and a quantity of travel books to include: The Great Wines of Germany, Beyond the Limits, etc.	2032	Five books to include: Guinness book of Records 1979 and 1999, In Mischief, etc.
2014	Eight books to include: The Langhorne Sisters, The Victorian Country House, The Royal Jewels, The English Country House, etc.	<p style="text-align: center;"><u>OIL PAINTINGS,</u> <u>WATERCOLOURS & PRINTS</u></p>	
2015	A quantity of coffee table books including Colefax and Fowler, Cottage Homes of England, Laura Ashley Home, etc.		
2016	Two boxes of books to include: paperback novels, autobiography's, Pre-Raphaelite Painters, etc.	2041	A framed and mounted Watercolour titled 'Floral Spray', signed Millie Marsh 1978, 13 1/2" x 15 1/2".
2017	A box of coffee table books including Victorian House Style, Edwardian England, The Tassels book, etc.	2042	A framed Oil on board by the artist George Richard Deakins (a self-taught British artist) depicting Chinese junks in vibrant yellow and red tones reflecting in the water, signed Deakins dated 1977, 30" x 22 1/2".
2018	A quantity of books to include: Some Protected Wild Flowers, Modern Motor Engineering, Great Cars, etc.	2043	A framed and mounted Brian Stevens print of The Opening of The Bute East Dock, Cardiff, 21" x 17", along with an engraving of Mr Kean by R. Cooper.
2019	Twenty two novels by Lee Childs - the Jack Reacher series.	2044	A framed and mounted marine Watercolour of a fishing boat (possibly Venice), no visible signature, 18" x 21 3/4".

2045	A framed and mounted wood Engraving titled Deer Feeding with a deer standing on his hind legs reaching up to eat leaves and fruit from a small tree, along with a small Painting of a bull fighting scene, signed lower left D Perez.	2064	A large framed print 'Picador' by Fernando Botero, 30 1/2" x 40".
2046	A framed and mounted Watercolour depicting a green bowl of fruit, indistinctly signed lower right, 17 1/2" x 14 1/2" and a Watercolour of sailing boats and a Lavender Fields by N. Laxton.	2065	A framed Limited Edition Print no. 47/70 of The Doge's Palace in Venice, signed Vio, 10" x 12 1/4".
2047	A large impressionist Oil painting of a street scene by R. Daney and another unframed Oil painting of a woodland stream.	2066	A framed Print 'Sunny Hills' by Gordon Stowell, along with a framed print of a self portrait by Rembrandt Van Rijn.
2048	A pair of decorative oval framed miniatures in oil depicting pastoral scenes with two figures and a large building in the background, signed Van Holt.	2067	A framed Print by George Hann titled 'A Mediterranean Harbour', along with a framed and mounted print The Coast Road, Druidston by Simon Swinfield.
2049	A pair of oval framed oil miniatures featuring a still life of flower in a vase, signed Van Holt.	2068	A framed Print of an etching by George Cruikshank depicting a scene from Sir Walter Scott's novel Waverley titled 'Washerwomen', along with a Limited Edition Print by Jenny Sanders depicting St Monks, Venice.
2050	A pair of wooden framed landscape in oil both signed by the artist Van Holt.	2069	A framed and mounted Print of The West front - Monticello Home of Thomas Jefferson by Charles H Overly.
2051	Two framed prints 'Where water Lilies Grow' and 'In an Old Garden' by Sydney Muschumps, 21 1/4" x 31 1/4".	2070	A framed and mounted country landscape in Pastel titled verso 'Summer Sky Dorset' by John Dudley, 17 1/4" x 15 3/4".
2052	A framed Print after Renoir titled 'In the Meadow' printed by Penn Prints, New York.	2071	A framed and mounted Watercolour of 'The Old Staick House, Eardisland', signed and dated lower right R.W. Deverell 1968, 19" x 15 3/4".
2053	A wooden framed Print of a country landscape with a river, children sat on the bank and a village in the distance.	2072	A framed and mounted Watercolour of a country landscape with a windmill in the distance, signed lower left F.W. Deverell, 14 3/4"
2054	Two Scottish Highland cattle Prints entitled 'Sunset on The Loch' and 'Sunrise on The Loch Katrine'.	2073	A large framed and mounted Print of irises, indistinctly signed lower left, 34" x 28".
2055	Two ornate framed Prints depicting sea crashing on rocks, signed Rubens Southey, 21" x 27". ****	2074	A framed Oil on canvas depicting cattle drinking from a river, initialed lower left J.J.J. dated 1929, 15" x 26".
2056	A pair of Japanese watercolours.	2075	A wooden framed Oil on canvas depicting a pastoral landscape with sheep, indistinctly signed (possibly J.J. Johnson), 32 1/2" x 22 1/2".
2057	A 18th century Bartolozzi stipple Engraving.	2076	A pair of Meg Stevens Limited Edition prints, 'Buttercups' and 'Bird Cherry Blossom', 11 1/4" x 17 3/4".
2058	A framed Oil on card depicting a river landscape with a bridge and path leading to a cottage on the left side, signed lower right, 32" x 24".	2077	A large framed Pat Turner print of geese walking though Bluebells, 28 1/2" x 24 1/2", along with a framed print of sleeping dogs, signed Harrison, 22" x 18 1/4".
2059	A large framed Engraving of 'The Last Supper, after Leonardo Da Vinci', engraved by F.J. Smyth, 42" x 26".	2078	A framed Print of a GWR poster by Leonard Richmond titled Wales. Rail 359 Distributed by Star Editions Ltd., 17 1/4" x 13".
2060	A framed Watercolour depicting a body of water, rolling hills in the background and trees with white blossoms, initialed and dated J.W 1942, 18" x 15".	2079	A framed and mounted Limited Edition Print no. 152/600 by Meg Stevens titled Harebells, 17" x 18".
2061	A large framed Print "The Confrerie des Chevaliers du Tastevin", 30 3/4" x 42 1/2".		
2062	An ornate gilt framed possible over painted Print, after John Macallan Swan's 'Barney's Letter', 16 3/4" x 20 1/2".		
2063	A framed Medici print 'The Baptism of Jordan' after Joachim Patinir, 24" x 22".		

2080	A pair of framed and mounted Limited Edition Prints by Rob Piercy titled 'Cottage Window' and 'Penygroes Cottage', 23 1/2" x 23 3/4".	2097	A framed and mounted pastel painting titled 'Early Morning Mist', signed John Hutchins, 29" x 25".
2081	A Fernandez Daiz Print on board of a Clown with Daisy, 23 1/2" x 11 3/4".	2098	Three framed and mounted watercolours depicting agapanthus flowers, all signed by the artist Sheila Drummond-Lay.
2082	A pair of Limited Edition Glyn Martin prints, Hereford Old House no. 141/850 and Hereford no. 627/850, 14" x 12".	2099	A framed and mounted watercolour depicting a still life of flowers in a green vase, signed Wendy Hutchins lower right, along with a framed watercolour of a still life with teapot, mug and fruit, signed Sheila D-L.
2083	A framed Oil on canvas depicting a baroque floral still life composition, signed R. Rosini.	2100	A framed and mounted watercolour of a young child dressed in red, signed lower right Sheila Drummond-Lay 2009, 18 3/4" x 22 3/4".
2084	A framed impasto Oil on board featuring an expressionistic sun bursting through dark trees, signed S. Garcia lower left, 19 3/4" x 25 1/4".	2101	A framed watercolour depicting a fishing boat in rough seas with seagulls flying nearby, signed lower right Sheila Drummond-Lay, 22 3/4" x 18 3/4".
2085	A framed and mounted charcoal drawing of a dog, signed Janet V, along with a framed and mounted watercolour of a dog, signed J Vincombe and a print of a dog laying by its owners wellingtons, no signature.	2102	A framed watercolour depicting a light house, signed by the artist Sheila Drummond-Lay, 18 3/4" x 22 3/4".
2086	A framed and mounted watercolour of lilies by Sheila Drummond-Lay, along with a framed watercolour of anemone flowers, signed by the same artist.	2103	A framed Mike Knight print of a rural village scene with white cottages and a body of water in the foreground.
2087	A pair of still life prints on canvas of a grey vase of foliage, no signature, 16" x 20".	2104	A framed and mounted watercolour titled Verso 'Restful Day', signed lower right Walter Wells, 22" x 18".
2088	A framed John Hall Thorpe wood print titled 'Marigolds', signed in pencil by artist, 14 1/4" x 13".	2105	Two framed and mounted watercolours by the artist Sheila Drummond-Lay to include: a portrait of a lady in a red hat, and a lady in a red dress.
2089	Two framed and mounted watercolours depicting flowers, signed lower right Sheila Drummond-Lay.	2106	A framed oil painting depicting Stone-in-Oxney Church and Romney Marsh by C.B.Summers, along with an acrylic on paper of Cottage at Chipstead, signed Sarah Cunningham.
2090	A framed and mounted charcoal and watercolour study of a seated nude, as seen from the back, signed Sheila Drummond-Lay, 17" x 21".	2107	A framed and mounted watercolour depicting an anchored boat FE130 at low tide, signed lower right Helen Taylor dated 1998, 16 1/2" x 20 1/2".
2091	A framed and mounted Sheila Drummond-Lay watercolour and ink painting of a dog sat looking out of a window, along with a framed and mounted print portrait of a dog.	2108	Two framed and mounted watercolours by the artist Sheila Drummond-Lay, one depicting sailing boats the other a light house scene.
2092	A framed print of an Olive branch, a set of three prints of various coastal scenes in one frame and a black and white abstract print of a tree,	2109	A framed oil on canvas of a still life, a jug containing artist's paint brushes, a cup and paint tubes, signed lower right Sheila Drummond-Lay 2010, 25 1/2" x 22".
2093	A large modern print on canvas by C. Henley depicting a coastal scene, 38 1/2" x 18".	2110	A framed oil on canvas of an Eastern gentleman in blue turban and robe sat on a low brick wall or ledge, signed lower right Sheila Drummond-Lay, 28" x 21 1/4".
2094	A large framed print of lilies, along with a framed E Crawford print of hydrangeas.	2111	A framed oil on canvas depicting a coastal scene with white house and small boat (possibly Dylan Thomas boat house), no visible signature, 27 3/4" x 24 1/2".
2095	A large framed print of a small still life of flowers in a blue vase, signed lower right Julie X, 32 1/4" x 32 1/4".		
2096	A framed and mounted watercolour and acrylic painting of Earnley Church, Chichester, signed lower right John Hutchins, 28 3/4" x 23".		

2112	A framed and mounted Limited Edition print of Gloucester Cathedral, signed K.W. Burton, 20" x 15 3/4".	2132	A fine Watercolour of crab apple blossom by C Meadowcroft.
2113	A large framed and mounted print depicting ballerinas, 32 3/4" x 26 3/4".	2133	A fine Watercolour of Honeysuckle in a vase by Jenny Barron.
2114	A framed and mounted print of Spring flowers, signed lower right Mignary, 29 1/4" x 21 1/4".	2134	A fine Watercolour of Bluebells by C Meadowcroft (Watercolour Society of Wales).
2115	Two framed and mounted watercolours depicting sailing boats, both signed by the same artist Sheila Drummond-Lay.	2135	A framed Ink & Watercolour depicting hides drying.
2116	A quantity of pictures to include four small watercolours of country landscapes, signed J.A Silk, print of a red flower, a print on canvas of a river landscape, Spring time by Arthur Easley and The Proposal by Margaret W. Tarrant.	2136	A framed Vladimir Tretchikoff Print titled 'The Chinese Girl', 22 1/4" x 26 1/4".
2117	An antique black and brown inks on paper depiction of a fight scene with figures in armour, in a classical arena, 11 x 9cm.	2137	A small framed Limited Print, no. 3/30 of a caricature of a man with a walking stick, 2" square approx. indistinctly signed Gerard
2118	A folder of artwork by Angela Kelly, Builth Wells, artist.	2138	A framed Oil on canvas depicting a harbour scene with boats and figures, signed lower left Vashti, 29 1/4" x 21 1/2".
2119	A folder of pencil drawings, Jenkins, 1961.	2139	A framed and mounted Phil Thompson Watercolour titled 'Low Water, Inner Harbour Polperro', signed, 17 3/4" x 21 3/4".
2120	An Angela Kelly etching of a fish, signed in pencil.	2140	A framed and mounted Watercolour titled 'Shute Hill Pelynt', indistinctly signed lower right, 16 1/4" x 13".
2121	A William Wyllie etching of The Thames, signed in pencil.	2141	A framed and mounted Photograph of a train taking on water.
2122	A Lettice Sandford (1902-1993) Eye Manor, Herefordshire wood Engraving 'Sappho', pencil inscribed and signed, artist proof 1932.	2142	A framed Oil on canvas depicting a Cornish fishing village/harbour scene, signed lower right Delon.
2123	A 19th century Watercolour of a woman and child in a highland landscape.	2143	A black and white train Print '5 upon Shap' by W. Gilmour', along with a print of four trains in an oval aperture, signed K. Mc.
2124	Two Islwyn Watkins (Welsh) proof prints 'White Oblique' and 'Where its At' both 1984.	2144	A Terence Cunneo signed Limited Edition Print no 750/850, titled 'Port Line'
2125	A pencil sketch of a standing nude 'Eaton', 1987.	2145	Three framed and mounted train Prints to include: 'Morning Delivery' and 'Morning Delivery' by Don Breckon and 'Hagley Hall' by Barry Price.
2126	An antique print, Wenceslas Hollar - "The West Prospect of the late Conventual Church of Westminster".	2146	A framed and mounted etching signed Gerald L. Brockhurst, titled 'A Galway Peasant' an Edition of 55, 12 1/4" x 13 3/4".
2127	An F. Weir Watercolour of St. Catherine's Hill, Winchester, inscribed and dated.	2147	A framed and mounted engraving, signed D Chute dated 1923 titled 'Garden of Gesthamani', 16 1/2" x 12 1/2".
2128	A 'Glimpse of Autumn' watercolour by Barbara Crowe, Royal Institute of Watercolour Artists R.I., (glass as found).	2148	A framed and mounted woodcut depicting a self portrait of the artist Keith Newstead, signed and dated 1988, 15 1/4" x 18 1/2".
2129	A very fine Watercolour of a wren on jasmine by Eleanor Ludgate, Royal Watercolour Society.	2149	An Oil on board of the detailed portrait of a King Charles spaniel head, 12" x 13", monogrammed lower right, also a similar of a black Labrador, 123" x 16".
2130	A very fine Watercolour of a small Copper, Painted Lady and Comma Butterflies on daisies by Eleanor Ludgate (Royal Watercolour Society), (see verso).		
2131	A very fine Watercolour of Marbled White, Adonis Blue and Peacock butterflies on clover by Eleanor Ludgate Royal Watercolour Society, (see verso).		

2150	A Henry Scott Tuke (1858-1929) Watercolour on paper "Portrait of a Boy Reading on the Rocks", 9 3/8" x 6 5/8" approx, signed and dated 1920 and inscribed J.A.H.; this is a portrait of Tuke's friend and model John Alfred (Jack) Hone, framed and glazed (19" x 16 1/2" approx); purchased by the present owners at David Lay on 24/9/2023 - Lot 71.	2165	A large gilt framed Oil on canvas depicting a serene coastal scene with a sandy beach, grassy dunes and waves rolling into the shore, distant hills visible in the background under a cloudy sky, 42" x 30 1/2".
2151	A Thomas Luny (1759-1837) Oil on panel "Fishing Boats and other Craft by a Jetty at Sunset", 9 1/2" x 13 1/4", signed and dated 1815. Sold at Christie's Manson & Wood in their sale of Fine Marine Pictures, 24 May 1968, property of Lady Coningham.	2166	A superb 19th century signed Etching of St. Martin's & Bull Ring, Birmingham.
2152	A George Morland (1763 - 1804) Oil on canvas "Time to pay the Bill", 12 1/2" x 14", signed and indistinctly dated lower left. Sold at Christies' Manson & Wood in their sale of Fine English Pictures, 13 February 1981, former property of Sir Geoffrey Keynes.	2167	A delightful Bartolozzi/Hamilton Print of a farmyard.
2153	A George Morland (1763 - 1804) Oil on canvas "Travellers in the Snow", 9 1/2" x 11 1/2", indistinctly signed lower right.	2168	Three framed and mounted watercolours to include: Slioch from Grudie Bridge, White Church, Comrie, Perthshire, and Beinne Eighe (Loch Coulin), by the artist R MacIntosh
2155	A Chinese Oil on board in black and white of a Winter scene with a large boat and sampan with distant mountains and a waterfall, 20" x 26".	2169	A framed and mounted Pencil and crayon landscape with a stone wall, signed and dated R Boulton (Reg) 1983, 18 1/4" x 19 3/4".
2156	A Sir William Russell Flint signed Print of Girls collecting water, 21" x 15" including frame, signature lower right titled "Seven Springs of Vers".	2170	A framed and mounted Watercolour, signed Greta London 1997, titled verso Pianissimo (Greta Sarfaty), 20 1/2" x 28 1/4".
2157	A pair of amate bark paper Folk art Paintings in vibrant colours.	2171	An oval mounted lino cut titled 'The Old House, Hereford', signed Reg Boulton 1979, 21" x 26".
2158	A large framed Limited Edition Print, no. 712/850 titled "Lion and Kudu" signed Kim Donaldson.	2172	A framed and mounted watercolour portrait of a young boy, signed lower right C Stratalat (Ciprian Stratalat), 17" x 20".
2159	A portfolio with contents of various paintings (18th and 20th century) including an oil on canvas (as found), watercolours, etc.	2173	A large framed ink wash painting 'Peasant Woman', signed Daghani (Arnold Daghani) dated 1969, 24 1/4" x 30".
2160	A folder of mounted Prints of antique paintings, etchings, after Durer, Renoir plus a quantity of engravings of historical figures in period dress etc	2174	A framed Limited Edition print 1/4 titled 'The Food of Love' signed lower right, 22 1/4" x 28".
2161	A framed and glazed Limited Edition Print of deer beside a loch, in the manner of John Skeaping.	2175	A framed and mounted Jean Marchand picture titled 'Reclining Female Figure', 29 1/4" x 20 1/2".
2162	An Oil painting on board under glass entitled "Red Kites on a Brecon Farm".	2176	A framed circular print titled 'Hawthorn Spiral' signed and dated T. Bush 1993, 20 1/4" x 28 1/4".
2163	An Irish landscape Oil painting under glass of "Ross Castle Killarney" by B Wallinger, 17 1/4" x 22 1/2" overall including frame.	2177	A framed and mounted oil on paper titled 'Nude from the back' signed lower right Croin, 24 3/4" x 32 1/2".
2164	An Irish landscape Oil painting under glass of "Muckcross Abbey, Killarney" by B Wallinger, 17 1/4" x 22 1/2" overall including frame.	2178	A framed drawing of 'Professor Momimersen' given by the artist Flora Russell 1964, as written verso, 10 3/4" x 12 1/2".
		2179	A framed and mounted ink and watercolour depicting two figures, no visible signature, 18" x 20".
		2180	A framed and mounted watercolour depicting a country landscape, signed lower right Sydney Brown 1945, 19 3/4" x 15 3/4".
		2181	A framed ink wash by Croin 'Study for Sculpture', no visible signature. 17" x 22".
		2182	A framed and mounted ink wash of The Artist Wife, signed Daghani lower right, 17 1/2" x 16 3/4".
		2183	A framed and mounted sketch of a reclining nude, no visible signature, 19 1/4" x 16 1/4".

2184	A framed and mounted engraving by James Gillray titled 'Hounds Finding'. 24" x 20 3/4".	2201	A framed and mounted Frank Southgate print 'The Flight Shooter'.
2185	A pair of framed prints of The Rhinebeck Panorama, birds eye view of London in 1806, 39 1/2" x 24 1/2".	2202	An ornately framed Oil on canvas depicting a street scene with steam traction engine and various figures in muted tones, no visible signature, 20 1/2" x 18 1/2".
2186	A quantity of prints to include: 'The Mask', Redoute prints of roses, Religious Icon, etc.	2203	An ornately framed Oil on paper depicting an autumn country landscape, no visible signature, 20 1/2" x 18 1/2".
2187	Three hand coloured engravings by Hollyer & Morland.	2204	A large framed print titled 'Departing Day at Tintern' from the painting by B.W. Leader, (frame and glass as found), 31 1/4" x 23 1/4".
2188	A framed and mounted watercolour depicting a misty morning by a body of water with a boat and building with its reflection on the water, indistinctly signed lower right.	2205	A large framed Oil painting of a ship, no visible signature, 28 1/2" x 20".
2189	A large framed print titled 'The Up and Down Lines' designed by W.C.M. printed by Riddle & Couchman, London, 23 1/2" x 31 1/2".	2206	A wooden framed and mounted wood block Chinese print, 28" x 21 3/4", along with an Oriental watercolour on paper of a chicken and her chicks, 17 3/4" x 37 1/2".
2190	A framed and mounted watercolour depicting a beach scene with figures enjoying the sunshine written verso painted at Walberswick by Ronald Gray, 20 3/4" x 17 1/4".	2207	A large framed and mounted Print of a rural Exmoor landscape, signed in pencil by the artist Sidney Perrin, featuring horses grazing and rolling hill in the distance, 29 1/2" x 23 1/2", along with a framed and mounted Charcoal picture of The Stag at Bay, signed lower right C Potter, after the original by Thomas Landseer.
2191	A pair of wooden framed prints 'Guess' and 'Me Loves OO' from the original paintings by Maude Goodman, 18 1/2" x 26 3/4"	2208	A large gilt framed and mounted Watercolour depicting a river gorge landscape with high tree clad cliffs and rolling hills in the distance, no visible signature, 28 1/2" x 36 3/4".
2192	A large framed Welsh print depicting the heads of the Welsh Methodists Church, 34 1/4" x 24 1/4".	2209	A quantity of pictures to include: a small watercolour of a gentleman fishing, initialed K.C, an Alan Paynes watercolour of a Cotswold village, horses, etc.
2193	A pair of framed prints depicting French light houses, signed A Coadou, 13" x 17 1/4".	2210	A framed and mounted Painting on silk of an African village with figures engaged in daily activities, indistinctly signed lower right, 19" x 16 1/2".
2194	A framed and mounted Limited Edition Print no. 9/500 possibly titled "Nobody Knows You're a Cat", signed lower right Jeffy Salt, 20" x 17".	2211	A framed Ken Howard print of the 1st British Corps Exercises Spear Point September 1980 , along with an Exercises Crusader (Spear Point) '80, by same artist.
2195	A framed Limited Edition Print no. 946/950 'Fox in a winter landscape' signed by the Swedish painter Bruno Liljefors.	2212	A framed and mounted Watercolour titled 'Sanctuary in Switzerland', signed lower right Alan Jones 1996 depicting a Boeing B-17 Flying Fortress with smoke coming from two engines, suggesting aircraft damage during a mission.
2196	A large framed Limited Edition no. 148/750 Alfred Munnings print 'Eleven o'Clock', along with 'The Hampton Hunt Series Foxhound Hunts of Great Britain framed Map'.	2213	Four framed Lionel Boyes Watercolours depicting birds to include: a Piper, a Woodpecker, a Dipper and a Kestrel, all signed and dated.
2197	A framed and mounted Limited Edition Print no. 147/200 by John C Harrison titled "Nearing the Butts".	2214	Two framed and mounted Watercolours one depicting a warthog and the other a tawny owl, both signed Lionel Boyes.
2198	A small quantity of prints to include: a courting couple decorated with butterfly wings, an enamel miniature of birds, a watercolour of a woodland scene, a Valerie Richards watercolour of a landscape, a print of a still life of fruit, etc.		
2199	Two small oval framed miniature oil paintings to include: a Van Holt still life of flowers (glass as found), and a landscape with figures and ruins near a body of water.		
2200	A framed and mounted Limited Edition Print no. 792/850 titled 'The Hunt' by British artist John Trickett.		

- 2215 A quantity of prints to include: several by Henry G Walker to include: 'Lanscombe Farm, Cockington', prints by Robson 'Chester Cathedral', 'The Dark Entry-Canterbury', J.W. Gozzard 'Autumn Eventide', etc.
- 2216 A framed Oil on canvas depicting a kitchen scene with a lady in a long black dress flower arranging, dedication written verso 'from Lionel Boyes', 25" x 20 1/2".

BRASS, COPPER & PEWTER

- 2221 A copper Kettle with acorn finial.
- 2222 Two heavy brass jam pans.
- 2223 A Brass figure of a seated sage, weighted in the base, 7" tall.
- 2224 Nine pewter tankards including Pinder Brothers etc.
- 2225 A quantity of pewter to include vases, chargers and bowl, some by Thomas Williams etc.
- 2226 A quantity of metalware including brass skimmers, plated cutlery, copper coated table lamp, etc.
- 2227 Two 1st World War Trench art shells, 9" tall.
- 2228 A large cast brass Chinese footed bowl engraved with symbols and calligraphy, 10" diameter.
- 2229 A probably 18th century solid cast brass Salamander, 13" long used to create a glaze or crust.
- 2230 A graduated set of six Copper Saucepans.
- 2231 A quantity of brass to include: a pair of candlesticks, Indian brass bowls, brass lizard, etc.
- 2232 A brass companion set on a wrought iron stand.
- 2233 A Swatow Pewter tankard with Chinese Dragon engraving with a glass bottom, marked to the base.
- 2234 Seven Pewter Tankards to include Crown & Rose, etc.
- 2235 A set of eight continental Pewter Measures.
- 2236 A set of five Pewter measures.
- 2237 A quantity of Pewter to include: tankards (one for the topping out of Maylord Orchards Shopping centre 1987), Hobson & Co teapot, plus two hip flasks.
- 2238 A copper and brass warming pan.
- 2239 A box of brasses to include: a gong, horse brasses, etc.
- 2240 A large Brass jardiniere with Dragon decoration, a smaller swing handled pot with similar decoration and an engraved bowl.
- 2241 A copper tray, plated fish servers, salts and candlesticks inserts.

- 2242 A quantity of mixed metals to include: a copper vase, cased apostle teaspoons, napkin rings, pewter jug, etc.
- 2243 A large Brass Charger with pie crust edge and intricate bird and foliage decoration, 17 3/4" diameter.
- 2244 A Copper and Brass bound Churn, 16" tall excluding handle.
- 2245 A box of pewter items including 'Abbey Hand Hammered' tray and lidded jugs, plus other English pewter jugs and a chamberstick.
- 2246 A tray of copper and brass items to include: brass tray 15" diameter, a kettle, etc.
- 2247 A large copper Vessel, 15 3/4" tall.

SILVER, SILVER PLATE, ETC

- 2251 A cased pair of Silver pickle Forks with mother of pearl handles (one a/f).
- 2252 A Georgian silver sugar tongs, 29.8 grams.
- 2253 Two Norwegian silver pickle/olive forks and a Silver dessert fork, Birmingham, 35 grams.
- 2254 A quantity of plate to include: cutlery, serving dish, plus a pewter goblet.
- 2255 A retro Picquot ware teapot, milk jug and sugar basin, plus a Viners stainless steel tray, 14" diameter.
- 2256 A large early 20th century large footed silver plated Punch Bowl with repousse garlands of flowers, lion mask handled and serpentine shaped rim, 12" diameter.
- 2257 A pair of glass slice and strawberry cut Bud Vase with silver rim, Birmingham 1900, 4" tall.
- 2258 A retro Viners stainless steel Canteen of cutlery, complete setting for six.
- 2259 A Silver urn shaped Vase with engraved key design to main body and elongated handles, Chester maker, George Nathan & Ridley Hayes, 6" high, 157 gms.
- 2260 A box of Epns to include: small Alfred Linley tankard, entree dishes, salad serving forks, glass rose bowl, cigarette box and a boxed set of six WMF steak knives.
- 2261 A six person Canteen of wooden handled Cutlery comprising knives, forks and spoons.
- 2262 A SBS Bestecke Solingen twelve place setting 24ct gold plated Canteen of Cutlery with dinner knives, forks and spoons, dessert forks, teaspoons, pastry slice, ladles, etc.
- 2263 A quantity of silver plate to include: two branch candelabra, four piece teaset, cruet set, salts, a tray, etc.
- 2264 A Theodore B Starr, New York sterling Silver Tazza, 249.3 gms.

2265	A quantity of cutlery to include: a part canteen of Viners cutlery, silver collared fish servers, a part set of Oneida cutlery, etc.	2286	A set of silver handled glove stretchers, a shoe horn and a button hook.
2266	A Silver cigarette Case with gilt interior, 1911, by A Horton & Allday, 58.5 gms.	2287	A set of silver handled butter knives.
2267	A Silver posy Vase, Birmingham 1974 by W I Broadway & Co (weighted), together with a Silver tea strainer Birmingham 1946, 33 .8 gms and a Sterling silver teaspoon, 5.5 gms.	2288	A Victorian Silver card Case, Birmingham, 66.3 grams.
2268	A small Silver Trophy, Birmingham 1936, 37.9 grams.	2289	A Continental silver mini photograph holder on a stand by Raddi (some damage).
2269	A Silver gilt Cigarette Case, London 1937, 168.5 grams.	2290	A quantity of plated items to include: cutlery, small trays, a goblet, photograph frame, etc.
2270	A small collection of cutlery to include Nevada Silver.	2291	A quantity of silver plate to include: hot water jugs, coffee pots, jugs with military arrow marks.
2271	A small quantity of silver plate spoons to include: five matching teaspoon with engraved patterns on the handles, Commemorative Coronation of Queen Elizabeth II 1953 spoon, two serving spoons, sugar spoon, etc.	2292	A quantity of silver plated cutlery to include: some with military arrow marks.
2272	A quantity of cutlery to include: a carving set, cased fish eaters, etc.	2293	A Silver backed hairbrush engraved with the name Molly, Birmingham hallmark.
2273	A quantity of plate to include: tea and hot water pots, sauce boats, bowls, etc.	2294	A two handled silver plated Tankard (small dent).
2274	A quantity of plate to include: trays. tankards, toast racks, a pewter tankard, etc.	2295	A small quantity of plated spoons and sugar sifter spoons including W & H plated, mostly unmarked.
2275	A quantity of plate to include: condiments, piggy bank, a ship money box, spoon and pusher, two circular trays, etc.	2296	A silver topped, cut glass dressing table Pot.
2276	A Silver Jug, Birmingham 1933 makers Liberty & Co. 3" high, 146 gms.	2297	A pair of silver Salts, Birmingham 1898 by Walker & Hall, along with two silver spoons, total weight 93 gms.
2277	A Silver Bonbon dish, Sheffield 1948 maker Walker & Hall, 6 3/4" diameter x 3" high, 179 gms, and an Epns card dish and butter press.	2298	A vintage chain mail evening purse, stamped Alpacca (alloy), maker R.W. Anchor.
2278	A Silver cream Jug, Sheffield 1899 makers John & William F Deakin, 141.9 gms.	2299	A silver plate Ladle and a mother of pearl handled Fruit Knife.
2279	An ornate Silver sugar Shaker, Sheffield 1901 maker Atkin Brothers, 7 3/4" tall, 314.9 grams.	2300	A Samson and Morden simple teardrop hollow silver desk Seal, circa 1900, 4.99 gms with intaglio initial A, hallmarked Chester.
2280	A small octagonal shaped Silver Tazza, Birmingham 1912, 5 5/8" diameter x 3 7/8" high, 156.9 gms.	2300 A	A quantity of plated Cutlery.
2281	A Silver Teapot with bakelite handle and finial, standing on ball feet, Sheffield 1903 makers Cooper Brothers and Son, 453.8 gms including handle.	<u>JEWELLERY</u>	
2282	Four Silver Salts with glass liners, Birmingham 1903, makers William Atkin, (some chips to liners) 100.6 gms excluding liners.		
2283	Two Silver salt Cellars, Sheffield and Birmingham, 86.6 gms.	2301	A quantity of costume jewellery to include polished stone, ceramic and wooden bead necklaces and bracelets and three watches.
2284	A Silver Inkwell with glass liner, Birmingham maker A& J Zimmerman, with weighted base.	2302	A sterling silver bracelet, two Celtic brooches, an enamel on copper brooch and a pendant with inlaid polish stone detail.
2285	Three silver handled carving Knives (one being Russian silver).	2303	A quantity of costume jewellery to include: five strand simulated pearl necklace, brooches, watches, etc.
		2304	A RAF sweetheart brooch.
		2305	A stamped Murano glass pendant inset gold and silver, 1 1/2" diameter, a 9 stone polished agate brooch, 2" diameter and a green jade coloured oval brooch, 1 3/4" long.
		2306	A large 19th century oval swivel shell cameo the reverse with well placed hair all in a twig like brass coloured frame with safety chain, 2 1/2" long.

2307	An amethyst coloured pendant necklace, 15" long plus an Art Deco clear stone bracelet mounted in metal stamped D.R.G.M. 1138525., plus a turquoise coloured polished stone necklace.	2326	A cased Monet bracelet and earring set, plus leopard and hound design bracelets, a bar brooch, etc.
2308	A pair of heavy white metal and filigree late 19th century ladies belt buckles mounted with many small turquoise stones in peacock feather shape Indian calligraphy stamp to metal verso, each 4" long.	2327	A brown jewellery box and contents of Bollywood style earrings, dress rings, etc.
2309	A large oval amber ring mounted in 925 silver, plus a black and cream enamel brooch in scroll design, 2" long stamped Fish.	2328	A quantity of Bollywood style costume jewellery to include: wedding bangles, necklaces, belt, etc.
2310	A pair of tear drop turquoise clip on earrings mounted in 925 silver, plus a 925 gold plated chain with white trembling centre stone pendant.	2329	A quantity of ladies costume cocktail watches to include: Henley, Geneva, Eton, etc.
2311	A large oval amber pendant mounted in 925 silver, 1 1/3" long, plus a gold plated Olympic five circle pendant and chain stamped Italy 925..	2330	A fabric covered jewellery box and contents of costume earrings, beads, necklaces, etc.
2312	A large oval gold coloured 19th century swivel pendant enclosed with early photographs of two 19th century gentleman in scroll frame 1 1/3" long.	2331	A small cantilever jewellery box and contents including chunky ring with stone setting, necklaces, crucifix, compact, etc.
2313	A gentlemen's Swiss Shield stainless steel wrist watch with original steel strap and black face (needs a battery).	2332	A small quantity of silver jewellery including a 925 Lucky No. 7 pendant, hallmarked silver stamp case, bracelet and thimble, etc.
2314	A quantity of gent's wrist watches to include: Seiko Kinetic 100m, Seiko 5, Volvo 17 jewel incabloc Philip Persio Professional, etc.	2333	A Casio Pro-Trek watch (as new - working at time of lotting) features include: digital compass, altimeter, barometer, thermometer, self charging, waterproof 100 metres (ideal explorer watch).
2315	A quantity of ladies wrist watches to include: Citizen Quartz, Premex, Ancre 15 Rubis, Lirus, etc.	2334	A box of watches to include: Swatch, Casio, Pulsar, etc.
2316	A quantity of chunky costume jewellery to include: beads, amulets, pendants, etc.	2335	A gold Wedding ring 22ct Birmingham 2003, 3.34 grams.
2317	A quantity of costume bangles.	2336	A Tissot gold plated Ladies watch 1976 in original box plus guarantee for spares and repairs.
2318	A quantity of metal costume bangles.	2337	Two pairs of Cufflinks, one pair marked silver, the other marked sterling silver.
2319	A cardboard jewellery box and contents to include: simulated pearls (one with Sterling silver clasp), Ethnic style earrings, etc.	2338	A quantity of boxed Cufflinks.
2320	A musical jewellery box and contents to include: glass beads, Mother of pearl pendant, love beads, etc.	2339	Two boxes of modern costume jewellery to include: bangles, Laura Ashley necklaces, bracelets, etc.
2321	A tin of costume jewellery earrings.	2340	A quantity of costume jewellery to include: tasseled, pendants, beads, etc.
2322	A quantity of costume jewellery brooches to include: bumble bee, birds, crescent moon, etc.	2341	A quantity of costume jewellery to include: loose beads, necklaces, etc.
2323	A quantity of costume jewellery brooches to include: micro mosaic, cameos, etc.	2342	A quantity of costume jewellery to include: bangles, beads, etc.
2324	A quantity of costume jewellery brooches to include: bows, floral sprays by Capri, Hollywood, etc.	2343	A quantity of costume jewellery to include: hair slides, earrings, bangles, etc.
2325	Three each costume bangles and brooches of leopards, puma, snake design, etc.	2344	A quantity of costume jewellery to include: bangles, bracelets, hair grips, etc.
		2345	A carved Jewellery Box containing costume jewellery to include: enameled brooch, watches, necklaces, earrings, etc.
		2346	Two white metal brooches in the form of a U boat and the New Zealand feather plus a yellow metal seal.
		2347	A pair of gold plated Cufflinks with engine turned decoration.

2348 An 18ct gold AAA Tanzanite and Diamond
snake headed Ring, size K, 7.40 gms, size O.



Forthcoming Auctions of Antique & Country
Furniture, Objets D'art & Collectables

at the New Salerooms situated in Pontrilas.
(Just off the Abergavenny/Hereford Road)

2026

January	9 th - 10 th	July	3 rd - 4 th
January	30 th - 31 st	July	24 th - 25 th
February	20 th - 21 st	August	21 st - 22 nd
March	13 th - 14 th	September	11 th - 12 th
April	10 th - 11 th	October	2 nd - 3 rd
May	1 st - 2 nd	October	23 rd - 24 th
May	22 nd - 23 rd	November	13 th - 14 th
June	12 th - 13 th	December	4 th - 5 th

Please note: Dates may alter without prior notice,
please check nearer the relevant date.

Viewing: Thursday prior to the sale dates
9am – 1pm and 2pm – 7pm
and Morning of sale from 8.00am
Check website for details

Entry Forms, Catalogues and Live Online Bidding
available from our website:

www.nigel-ward.co.uk

The New Salerooms
Pontrilas - Hereford - HR2 0EH

☎ 01981 240140 ☎

email: salerooms@nigel-ward.co.uk

CONDITIONS OF SALE

1. Whilst Nigel Ward & Co. make every effort to ensure the accuracy of their catalogue and description of any lot:
 - a. Each lot as set out in the catalogue or as divided or combined with any other lot or lots is sold by the Vendors with all faults, imperfections and errors of description.
 - b. The Auctioneers do not accept responsibility for the authenticity, attribution, genuineness, origin, authorship, date, age, period condition or quality of any lot.
 - c. All statements, whether printed in the catalogue or made orally, as to any of the matters set out in "b" above are statements of opinion only and are not to be taken as being implying any warranties or representations of fact by Nigel Ward & Co.
 - d. All conditions, notices, descriptions, statements and other matters in the catalogue and elsewhere concerning any lot are subject to any statements modifying or affecting the same made by the Auctioneer from the rostrum prior to any bid being accepted for the lot.
2. The Auctioneer has absolute discretion to divide any lot, to combine any two or more lots or to withdraw any lot or lots from the sale, to refuse, bids, regulate bidding, to cancel the sale without in any case giving any reason and without previous notice.
3. The Auctioneer has the right to bid on behalf of the Vendors for all goods which are offered subject to reserve or at the Auctioneer's discretion.
4. Unless instructions are received previously as to reserve, the Auctioneers may sell the items without reserve if they think fit.
5. The highest bidder shall be the buyer except in the case of a dispute. If during the auction the Auctioneer considers that a dispute has arisen, he has absolute discretion to settle it or to re-offer the lot.
6. The Auctioneer shall regulate the bidding at his own discretion.
7. Each buyer by making a bid for a lot acknowledges that he has satisfied himself fully before bidding by inspection or otherwise as to all the Sale Conditions, the physical condition of and description of the lot including but not restricted to whether the lot is damaged or has been repaired or restored.
8. Each lot shall remain at the Vendor's risk until sold. From the fall of the hammer the lot shall remain at the Purchaser's risk but in no circumstances must they be removed from the sale until paid for. **CHEQUES WILL ONLY BE ACCEPTED FROM PERSONS PREVIOUSLY KNOWN TO THE AUCTIONEER OR OTHERWISE SUPPORTED BY A BANKER'S CARD OR REFERENCE.** If payment is made by cheque, the Auctioneers shall have a lien upon the goods, until such a cheque has been cleared by the Bank upon which it is drawn.
9. Legal title will not pass to the purchaser until the lot (s) has been paid for in full and the Auctioneer shall be entitled to a lien on any lot sold until the purchase price is paid in full. Immediately the lot is sold the purchaser shall notify the Auctioneers of his name and address and if called upon to do so by the Auctioneer shall pay such proportion of the purchase price as the Auctioneer may require, in default of which the lot or lots so purchased to be immediately re-offered.
10. Lots shall be paid for in full and taken away from the sale at the buyer's risk and expense immediately on the conclusion of the sale, failing which the Auctioneer shall not be responsible if the same are lost, stolen, damaged or destroyed and any lots not taken away shall be at the sole risk of the buyer and subject to a charge for storage.
11. **Buyer's Premium at the rate of 20% Plus V.A.T. will be added to the hammer price of all lots purchased.**

Online Bidding

Nigel Ward & Company offer an online bidding service via nigelward.atgportals.net and the-saleroom.com for bidders who cannot attend the sale.

In completing the bidder registration on nigelward.atgportals.net or the-saleroom.com and providing your credit card details and unless alternative arrangements are agreed with Nigel Ward & Company, you:

- *authorise Nigel Ward & Company, if they so wish, to charge the credit card given in part or full payment, including all fees, for items successfully purchased in the auction via the-saleroom.com, and*
- *confirm that you are authorised to provide these credit card details to Nigel Ward & Company through www.the-saleroom.com and agree that Nigel Ward & Company are entitled to ship the goods to the card holder name and card holder address provided in fulfilment of the sale.*

Please note that any lots purchased via nigelward.atgportals.net live auction service will be subject to an additional 3% commission charge + VAT at the rate imposed on the hammer price and any lots purchased via the-saleroom.com live auction service will be subject to an additional 5% commission charge + VAT at the rate imposed on the hammer price.